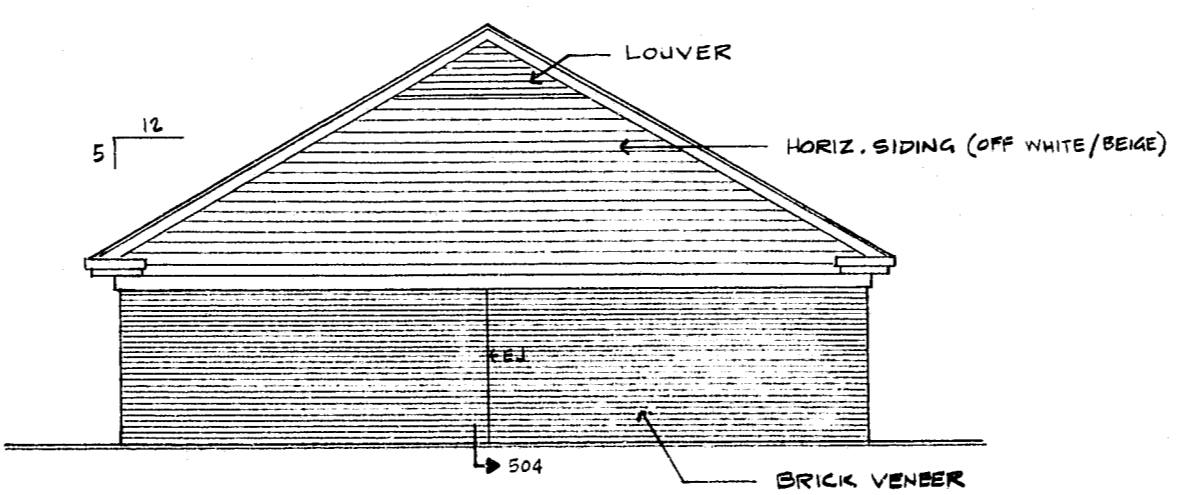
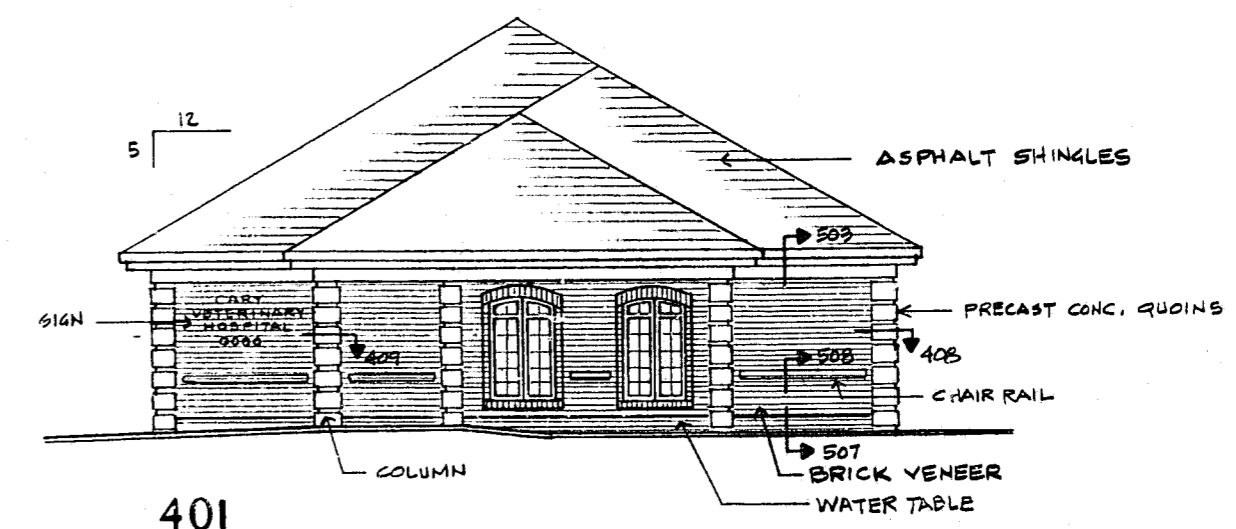


**409**  
COLUMN  
DETAILS OF QUIONS 1/2" = 1'-0"

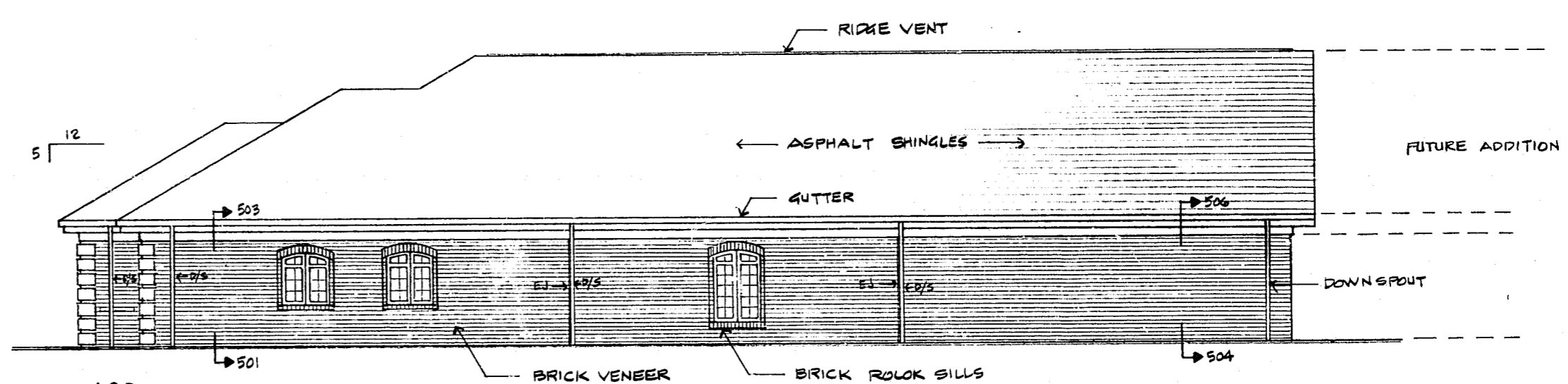
**408**  
CORNER  
1/2" = 1'-0"



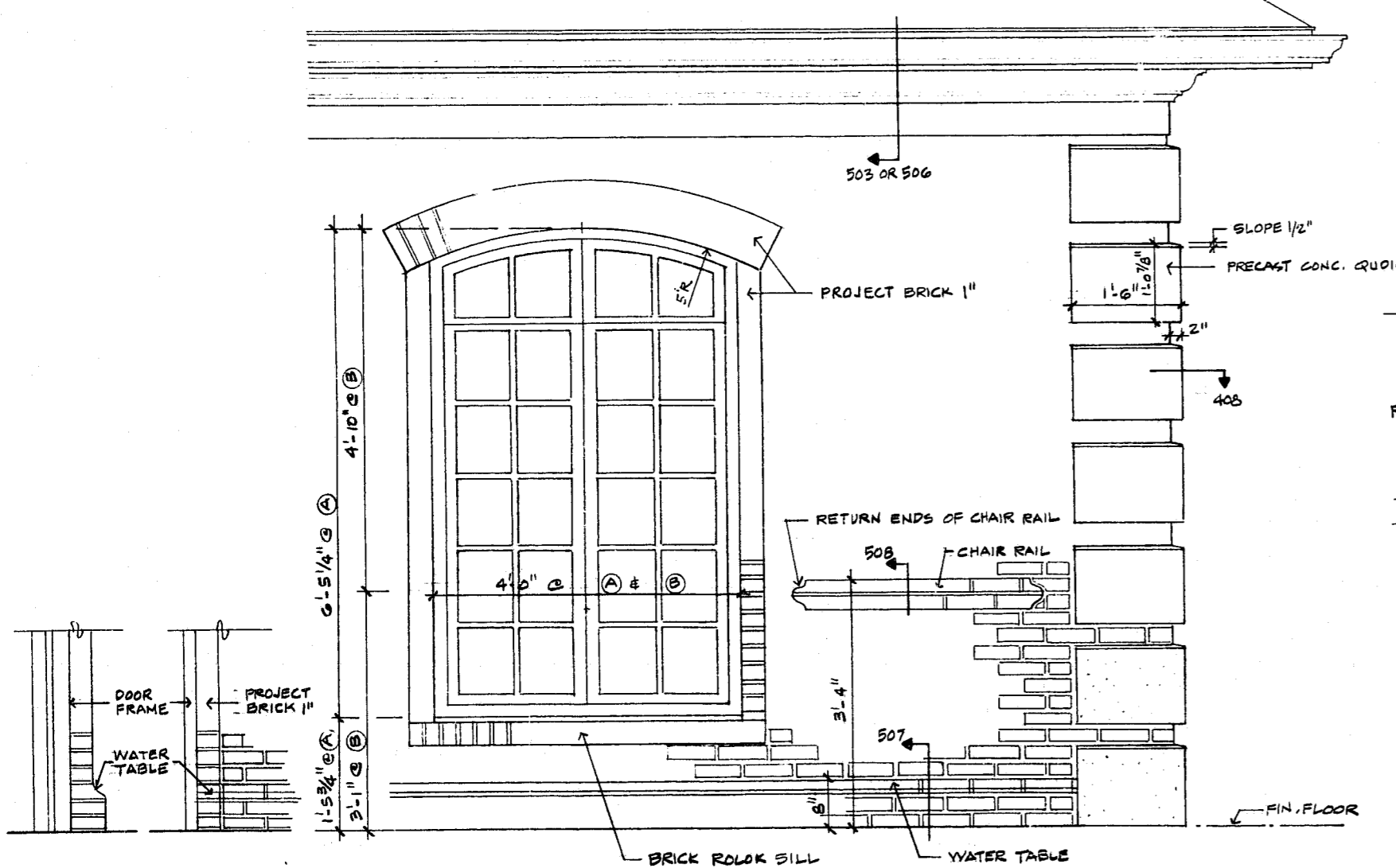
**402**  
EAST ELEVATION 1/8" = 1'-0"



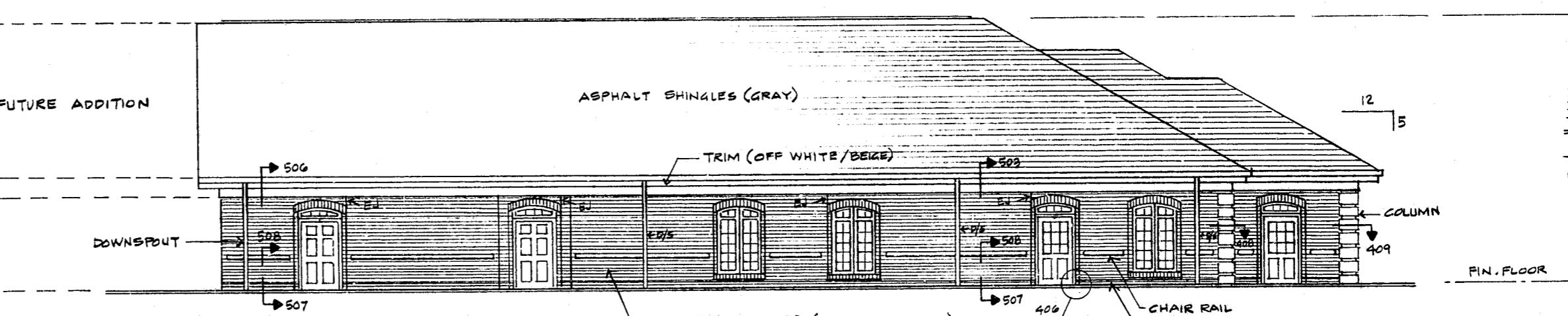
**401**  
WEST ELEVATION 1/8" = 1'-0"



**403**  
SOUTH ELEVATION 1/8" = 1'-0"



**405**  
TYPICAL ELEVATION AT WINDOWS, BRICK & QUIONS 3/4" = 1'-0"



**404**  
NORTH ELEVATION 1/8" = 1'-0"

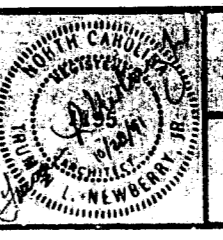
**407**  
SIDE ELEV.  
@ DOOR JAMB

**406**  
ELEV. @ DOOR  
JAMB

**FLYTHE CONSTRUCTION CO**  
GENERAL CONTRACTOR  
RALEIGH, NORTH CAROLINA

**CARY VETERINARY HOSPITAL**  
NORTHEAST MAYNARD ROAD  
CARY, N.C.

DATE  
28 OCT. 1991  
22 NOV. 1991  
15 JAN. 1992  
24 FEB. 1992



**ELEVATIONS**  
**TRUMAN L. NEWBERRY JR.**  
ARCHITECT  
5013 WILL-O-DEAN ROAD RALEIGH, N.C. 27604

SHEET NO. **4**