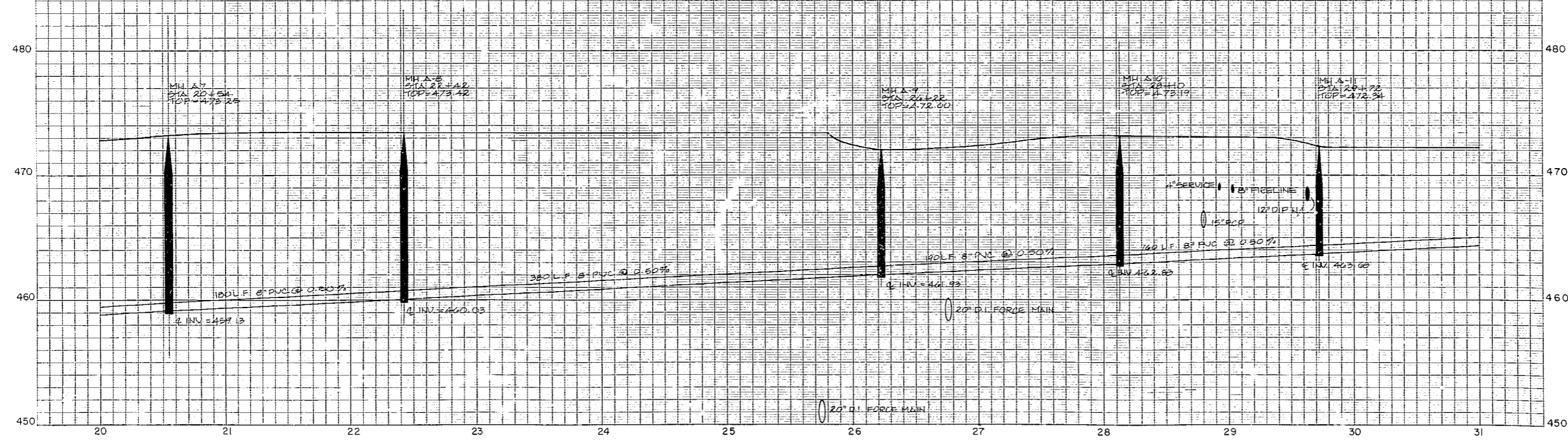
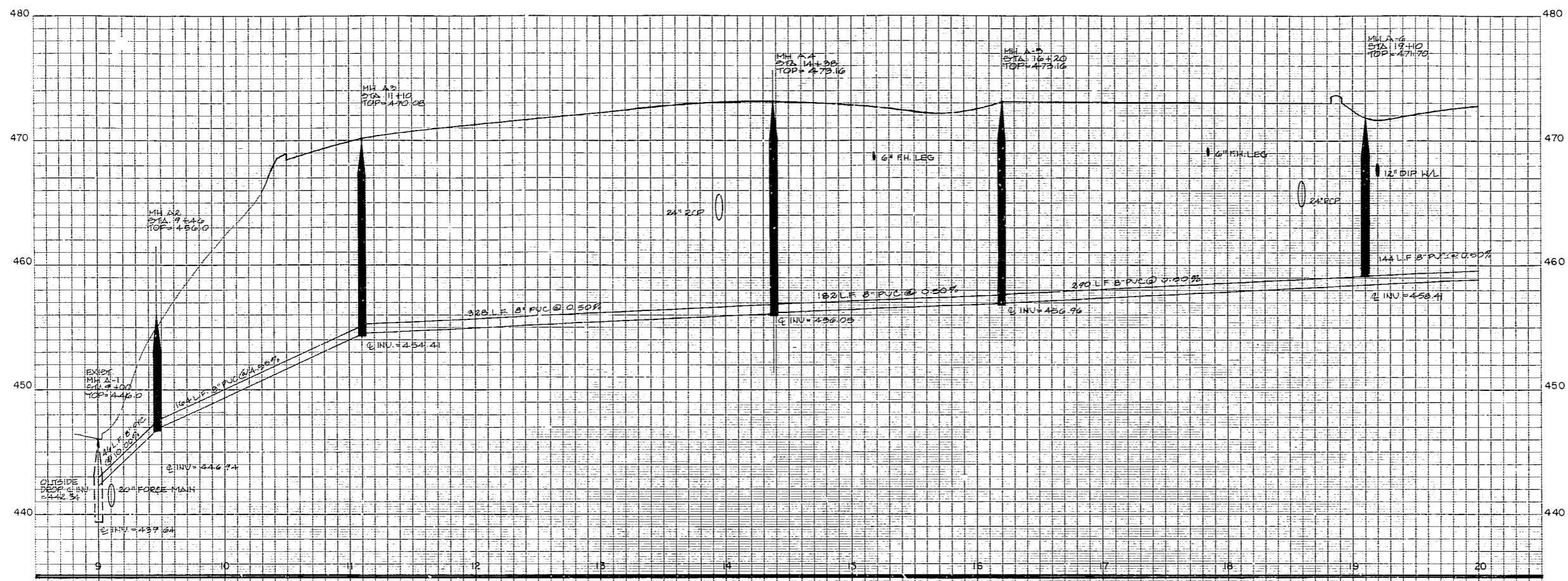




- Revisions
 1) MARCH 12, 1990 - ADDED W/L CONFLICTS
 2) APRIL 9, 1990 - REVISED STA. # AT A-1 & A-3
 3) APRIL 25, 1990 - REVISED A1-A3



NOT ISSUED FOR CONSTRUCTION

Project
CARY VILLAGE MALL

OUTFALL A

Date
March 1, 1990

Scale
 HORZ 1" = 40'
 VERT 1" = 4'

Sheet
U5