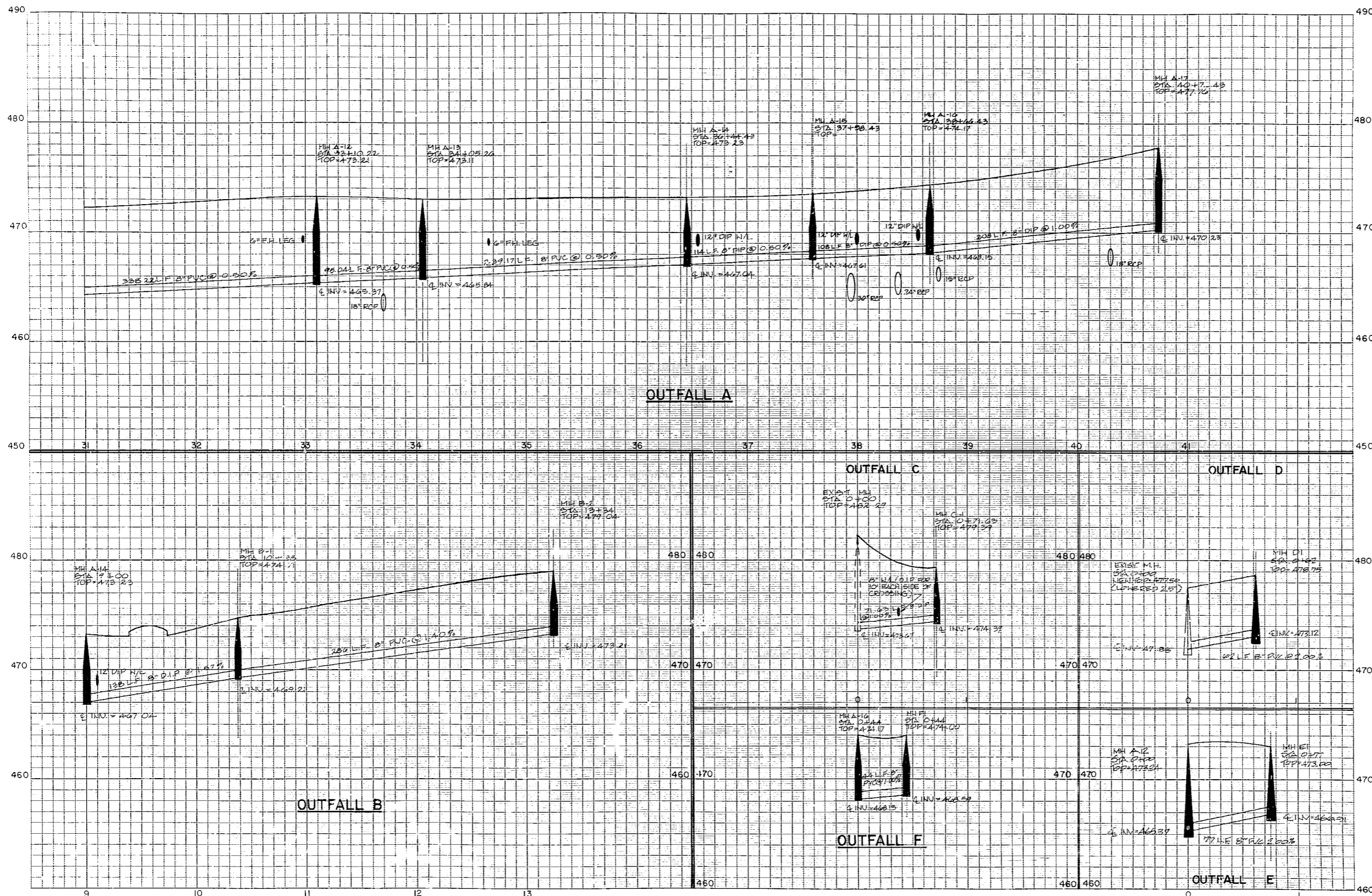




- Revisions
- 1) MARCH 12, 1990 - REVISED B2 & VARIOUS LINES TO D.P.
 - 2) APRIL 3, 1990 - ADD OUTFALL D & E
 - 3) APRIL 20, 1990 - REVISED STA AT MVA-14
 - 4) APRIL 25, 1990 - ADDED OUTFALL F & REVISED A-14-S17



NOT ISSUED FOR CONSTRUCTION

Project
CARY VILLAGE MALL

OUTFALL A, B & C, D, E

Date
March 1, 1990

Scale
1" = 40' HORIZONTAL
1" = 40' VERTICAL

Sheet
U6