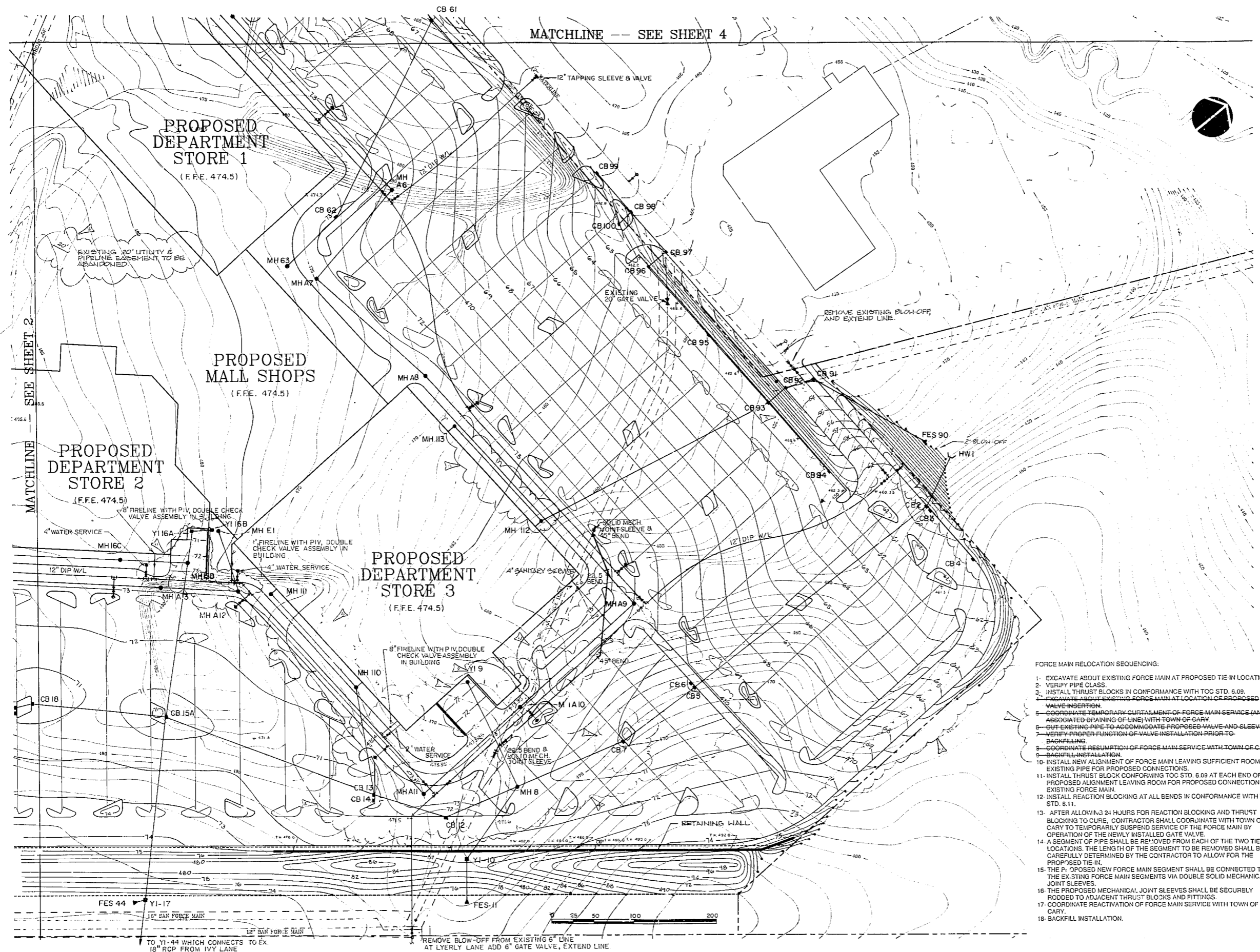


- Revisions
- 1) MARCH 12, 1990 - REVISED HISC NOTES
  - 2) MARCH 17, 1990 - T.O.C. FIRST REVIEW
  - 3) APRIL 9, 1990 - REVISED GRADING, ADDED DTGS 9A, 9C, 16B, 10 1/2, 11 2 1/2 & REVISED FORCE MAIN NOTES
  - 4) APRIL 12, 1990 - REVISED ISLAND AND GRADING AT STAGE 3. ADDED MH 10C.
  - 5) APRIL 20, 1990 - DELETED DTGS MH 2A & 7C - REVISED 7A TO 7 1/2" ADDED FH TO 18" AND 6" LOCATIONS BEHIND PROPOSED DEPT. DITCHES #3 - DELETED 2" DIET #3 & CB 7, REVISED FES 1 TO HW1

**NOT ISSUED FOR CONSTRUCTION**

Project  
**CARY VILLAGE MALL**  
 GRADING, UTILITIES, EROSION CONTROL

Date  
**March 1, 1990**  
 Scale  
**1" = 50'**  
 Sheet  
**U3**



- FORCE MAIN RELOCATION SEQUENCING:**
1. EXCAVATE ABOUT EXISTING FORCE MAIN AT PROPOSED TIE-IN LOCATIONS.
  2. VERIFY PIPE CLASS.
  3. INSTALL THRUST BLOCKS IN CONFORMANCE WITH TOC STD. 6.09.
  4. EXCAVATE ABOUT EXISTING FORCE MAIN AT LOCATION OF PROPOSED VALVE INSERTION.
  5. COORDINATE TEMPORARY CURTAILMENT OF FORCE MAIN SERVICE (AND ASSOCIATED DRAINING OF LINE) WITH TOWN OF CARY.
  6. CUT EXISTING PIPE TO ACCOMMODATE PROPOSED VALVE AND SLEEVE.
  7. VERIFY PROPER FUNCTION OF VALVE INSTALLATION PRIOR TO BACKFILLING.
  8. COORDINATE RESUMPTION OF FORCE MAIN SERVICE WITH TOWN OF CARY.
  9. BACKFILL INSTALLATION.
  10. INSTALL NEW ALIGNMENT OF FORCE MAIN LEAVING SUFFICIENT ROOM AT EXISTING PIPE FOR PROPOSED CONNECTIONS.
  11. INSTALL THRUST BLOCK CONFORMING TOC STD. 6.09 AT EACH END OF PROPOSED ALIGNMENT LEAVING ROOM FOR PROPOSED CONNECTION TO EXISTING FORCE MAIN.
  12. INSTALL REACTION BLOCKING AT ALL BENDS IN CONFORMANCE WITH TOC STD. 6.11.
  13. AFTER ALLOWING 24 HOURS FOR REACTION BLOCKING AND THRUST BLOCKING TO CURE, CONTRACTOR SHALL COORDINATE WITH TOWN OF CARY TO TEMPORARILY SUSPEND SERVICE OF THE FORCE MAIN BY OPERATION OF THE NEWLY INSTALLED GATE VALVE.
  14. A SEGMENT OF PIPE SHALL BE REMOVED FROM EACH OF THE TWO TIE-IN LOCATIONS. THE LENGTH OF THE SEGMENT TO BE REMOVED SHALL BE CAREFULLY DETERMINED BY THE CONTRACTOR TO ALLOW FOR THE PROPOSED TIE-IN.
  15. THE PROPOSED NEW FORCE MAIN SEGMENT SHALL BE CONNECTED TO THE EXISTING FORCE MAIN SEGMENTS VIA DOUBLE SOLID MECHANICAL JOINT SLEEVES.
  16. THE PROPOSED MECHANICAL JOINT SLEEVES SHALL BE SECURELY FLOODED TO ADJACENT THRUST BLOCKS AND FITTINGS.
  17. COORDINATE REACTIVATION OF FORCE MAIN SERVICE WITH TOWN OF CARY.
  18. BACKFILL INSTALLATION.

MATCHLINE -- SEE SHEET 4

MATCHLINE -- SEE SHEET 2

**PROPOSED DEPARTMENT STORE 1**  
 (F.F.E. 474.5)

**PROPOSED MALL SHOPS**  
 (F.F.E. 474.5)

**PROPOSED DEPARTMENT STORE 2**  
 (F.F.E. 474.5)

**PROPOSED DEPARTMENT STORE 3**  
 (F.F.E. 474.5)

8" FIRELINE WITH PIV. DOUBLE CHECK VALVE ASSEMBLY IN BUILDING

1" FIRELINE WITH PIV. DOUBLE CHECK VALVE ASSEMBLY IN BUILDING

8" FIRELINE WITH PIV. DOUBLE CHECK VALVE ASSEMBLY IN BUILDING

FES 44 Y1-17 16" SAN FORCE MAIN

REMOVE BLOW-OFF FROM EXISTING 6" LINE AT LYERLY LANE ADD 6" GATE VALVE, EXTEND LINE

