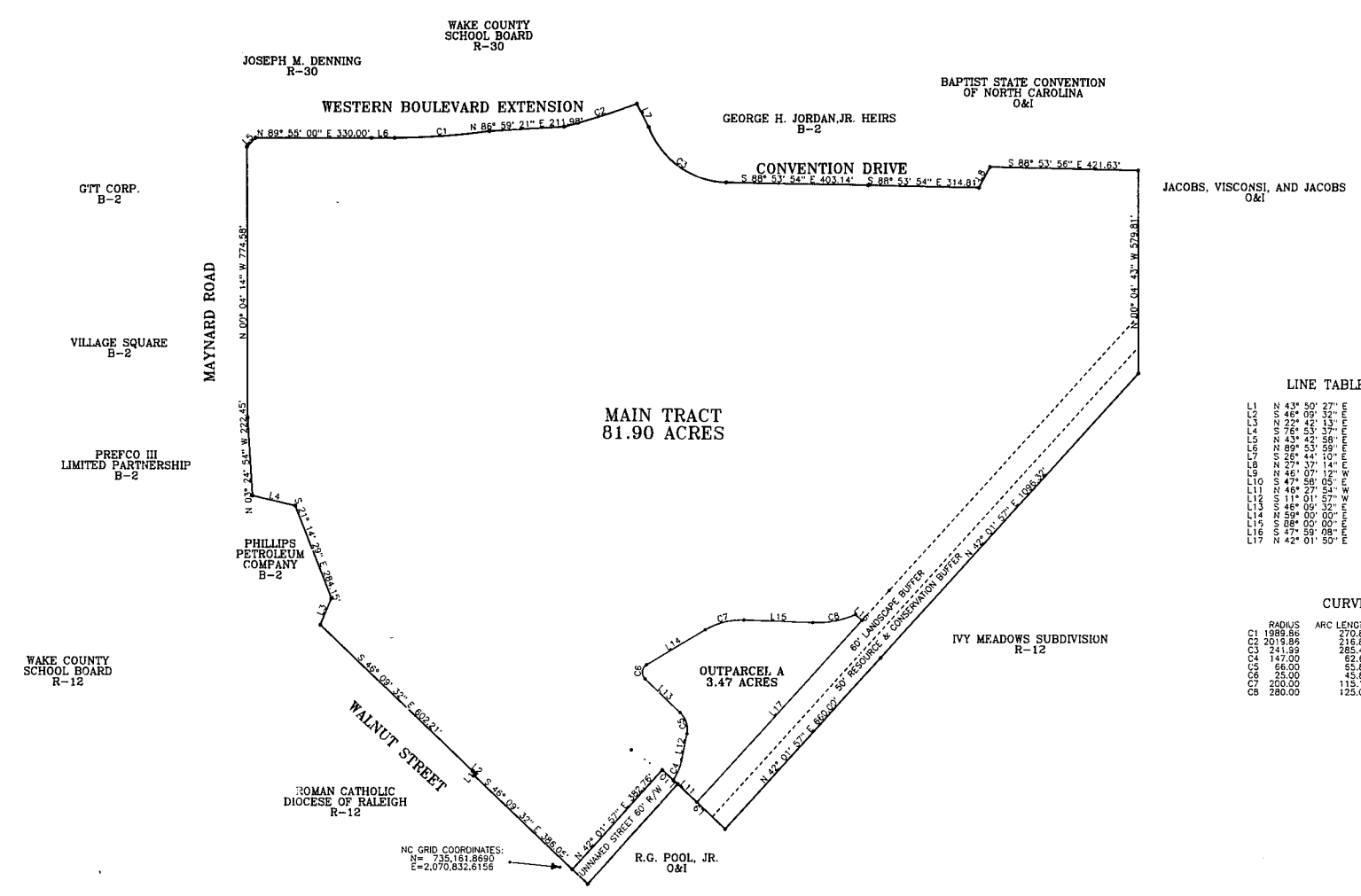




Revisions
 JUNE 23, 1989 - 1ST TO C.
 REVIEW



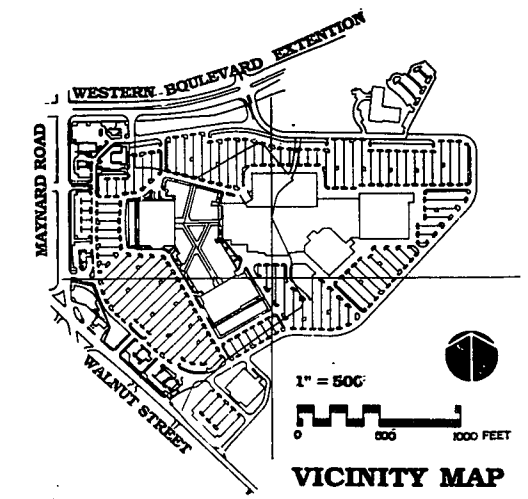
LINE TABLE

LINE	BEARING	DISTANCE	AREA
L1	N 43° 50' 27" E	6.00'	
L2	S 48° 09' 32" W	10.84'	
L3	S 72° 42' 13" W	82.18'	
L4	S 72° 42' 13" W	144.28'	
L5	N 43° 43' 58" E	34.65'	
L6	S 88° 53' 54" E	62.50'	
L7	S 26° 44' 10" E	74.18'	
L8	N 67° 37' 14" E	67.96'	
L9	N 46° 07' 32" W	185.57'	
L10	S 47° 58' 05" E	59.80'	
L11	N 46° 27' 54" W	82.84'	
L12	S 11° 51' 57" W	75.77'	
L13	S 48° 09' 32" E	135.65'	
L14	S 88° 53' 54" E	194.52'	
L15	S 26° 44' 10" E	162.31'	
L16	S 47° 58' 05" E	24.58'	
L17	N 43° 50' 27" E	700.30'	

CURVE TABLE

CURVE	RADIUS	ARC LENGTH	TANGENT	DELTA
C1	1988.86	270.89	135.65	07° 48' 00"
C2	2015.86	216.80	108.51	06° 09' 00"
C3	241.68	265.43	181.97	04° 45' 33"
C4	147.00	62.82	31.79	24° 24' 22"
C5	68.00	65.86	35.96	07° 11' 30"
C6	25.00	43.88	32.87	105° 09' 32"
C7	250.00	112.12	56.24	14° 00' 00"
C8	280.00	125.07	63.59	25° 35' 32"

NC GRID COORDINATES:
 N = 735,181.8690
 E = 2,070,832.9165



FOR CONSTRUCTION

Project
CARY VILLAGE MALL

SITE DATA

Date
JUNE 1, 1989

Scale
1" = 200'

Sheet
SD-1