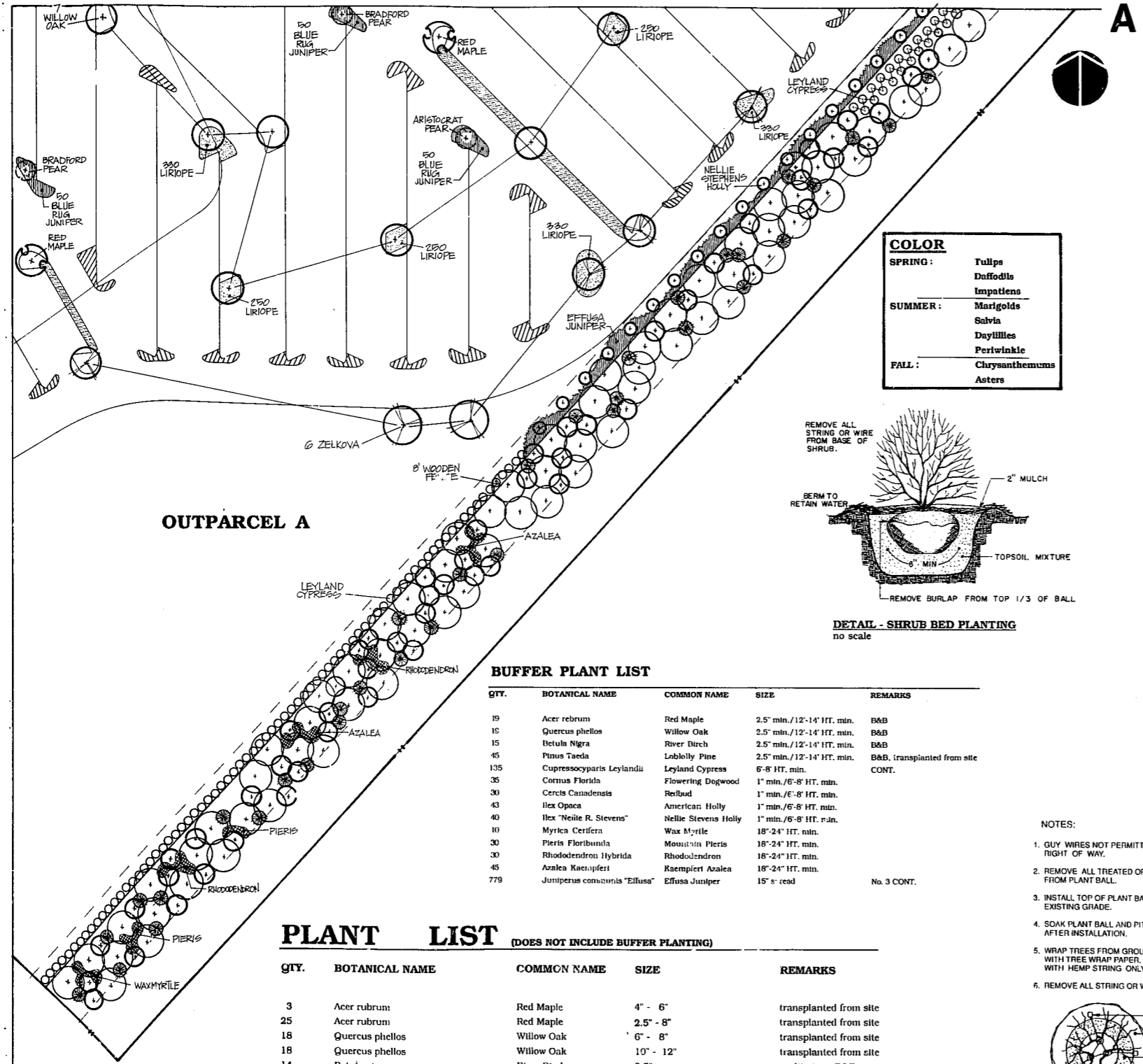


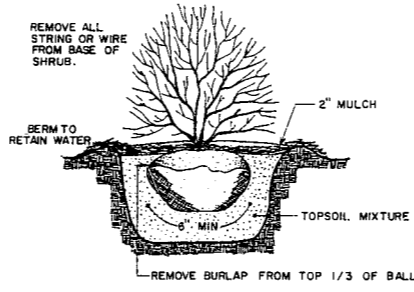


Revisions
6/22/89 FIRST T.O.C. REVIEW



COLOR

SPRING:	Tulpe
	Daffodils
	Impatiens
SUMMER:	Marijolds
	Salvia
	Duyllies
	Periwinkle
FALL:	Chrysanthemums
	Asters

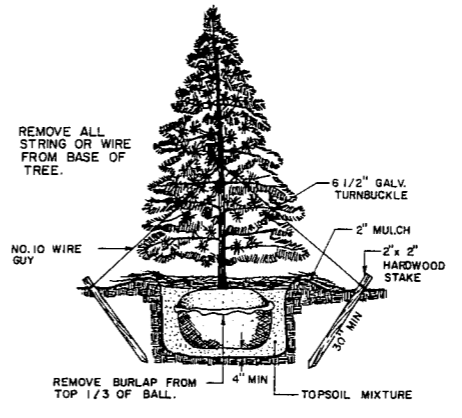


BUFFER PLANT LIST

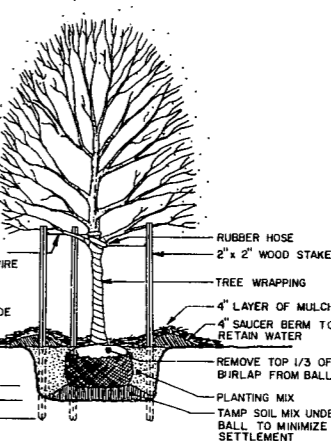
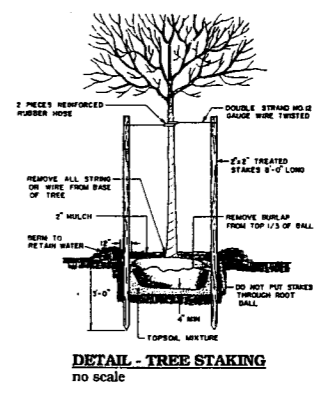
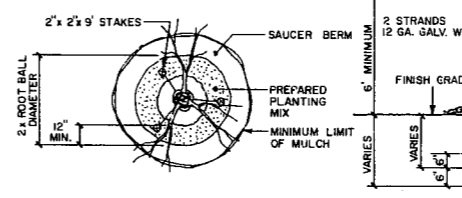
QTY.	BOTANICAL NAME	COMMON NAME	SIZE	REMARKS
19	Acer rubrum	Red Maple	2.5' min./12'-14' HT. min.	D&B
15	Quercus phellos	Willow Oak	2.5' min./12'-14' HT. min.	D&B
15	Betula nigra	River Birch	2.5' min./12'-14' HT. min.	D&B
45	Pinus taeda	Loblolly Pine	2.5' min./12'-14' HT. min.	D&B, transplanted from site
135	Cupressocyparis leylandii	Leyland Cypress	6'-8' HT. min.	CONT.
35	Cornus florida	Flowering Dogwood	1' min./6'-8' HT. min.	
30	Cercis canadensis	Redbud	1' min./6'-8' HT. min.	
43	Ilex opaca	American Holly	1' min./6'-8' HT. min.	
40	Ilex "Nellie R. Stevens"	Nellie Stevens Holly	1' min./6'-8' HT. min.	
10	Myrica cerifera	Wax Myrtle	18'-24' HT. min.	
30	Pieris floribunda	Mountain Pieris	18'-24' HT. min.	
30	Rhododendron hybrida	Rhododendron	18'-24' HT. min.	
45	Azalea speciosa	Raempiert Azalea	18'-24' HT. min.	
779	Juniperus communis "Effusa"	Effusa Juniper	15' x read	No. 3 CONT.

PLANT LIST (DOES NOT INCLUDE BUFFER PLANTING)

QTY.	BOTANICAL NAME	COMMON NAME	SIZE	REMARKS
3	Acer rubrum	Red Maple	4' - 6"	transplanted from site
25	Acer rubrum	Red Maple	2.5' - 8"	transplanted from site
18	Quercus phellos	Willow Oak	6' - 8"	transplanted from site
18	Quercus phellos	Willow Oak	10' - 12"	transplanted from site
14	Betula nigra	River Birch	2.5'	transplanted from site
3	Betula nigra	River Birch	4' - 6"	transplanted from site
99	Zelkova serrata "Village Green"	"Village Green" Zelkova	2.5'/12' - 14' HT.	B&B
61	Lagerstroemia indica	Crapemyrtle	2' - 2.5'/8' - 10' HT.	treeform, multi-stem
48	Pinus taeda	Loblolly Pine	8' - 10'/20' - 25' HT.	transplanted from site
35	Ilex "Nellie R. Stevens"	Nellie Stevens Holly	2' - 2.5'/8' - 10' HT.	B&B
26	Pyrus calleryana "Aristocrat"	Aristocrat Pear	4' - 6"	transplanted from site
32	Pyrus calleryana "Bradford"	Bradford Pear	6' - 8"	transplanted from site
840	Juniperus communis "Effusa"	Effusa Juniper	3 GAL./CONT.	30" O.C.
572	Ilex cornuta "Burfordii nana"	Dwarf Burford Holly	24" - 30" HT./CONT.	3.0" O.C.
53	Ilex crenata "Helleri"	Heller Holly	18" - 24" HT./CONT.	30" O.C.
275	Ilex cornuta "Carissa"	Carissa Holly	18" - 24" HT./CONT.	30" O.C.
18,490	Liriope spicata	Creeping Lilyturf	1 GAL./CONT.	18" O.C.
2,610	Juniperus horizontalis "Wiltonii"	Blue Rug Juniper	3 GAL./CONT.	30" O.C.

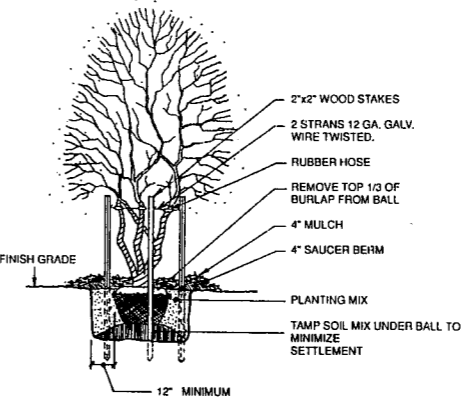
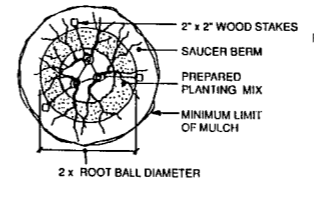


- NOTES:**
- GUY WIRES NOT PERMITTED ON STREET RIGHT OF WAY.
 - REMOVE ALL TREATED OR PLASTIC COATED BURLAP FROM PLANT BALL.
 - INSTALL TOP OF PLANT BALL UP TO 3' - 4' ABOVE EXISTING GRADE.
 - SOAK PLANT BALL AND PIT IMMEDIATELY AFTER INSTALLATION.
 - WRAP TREES FROM GROUND TO LOWEST BRANCHES WITH TREE WRAP PAPER, SECURE TOP & BOTTOM WITH HEMP STRING ONLY.
 - REMOVE ALL STRING OR WIRE FROM BASE OF TREE.

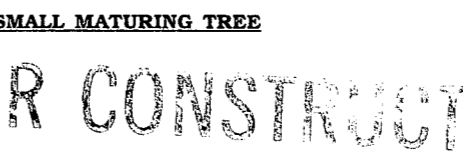


PLANTING DETAIL - LARGE MATURING TREE

- NOTES:**
- GUY WIRES NOT PERMITTED ON STREET RIGHT OF WAY.
 - REMOVE ALL TREATED OR PLASTIC COATED BURLAP FROM PLANT BALL.
 - INSTALL TOP OF PLANT BALL UP TO 3' - 4' ABOVE EXISTING GRADE.
 - SOAK PLANT BALL AND PIT IMMEDIATELY AFTER INSTALLATION.
 - WRAP TREES FROM GROUND TO LOWEST BRANCHES WITH TREE WRAP PAPER, SECURE TOP AND BOTTOM WITH HEMP STRING ONLY.
 - REMOVE ALL STRING OR WIRE FROM BASE OF TREE.



PLANTING DETAIL - SMALL MATURING TREE



FOR CONSTRUCTION

Project
CARY VILLAGE MALL

PLANTING PLAN

Date
JUNE 1, 1989

Scale
1"=50'

Sheet
L-4