

NOTES:

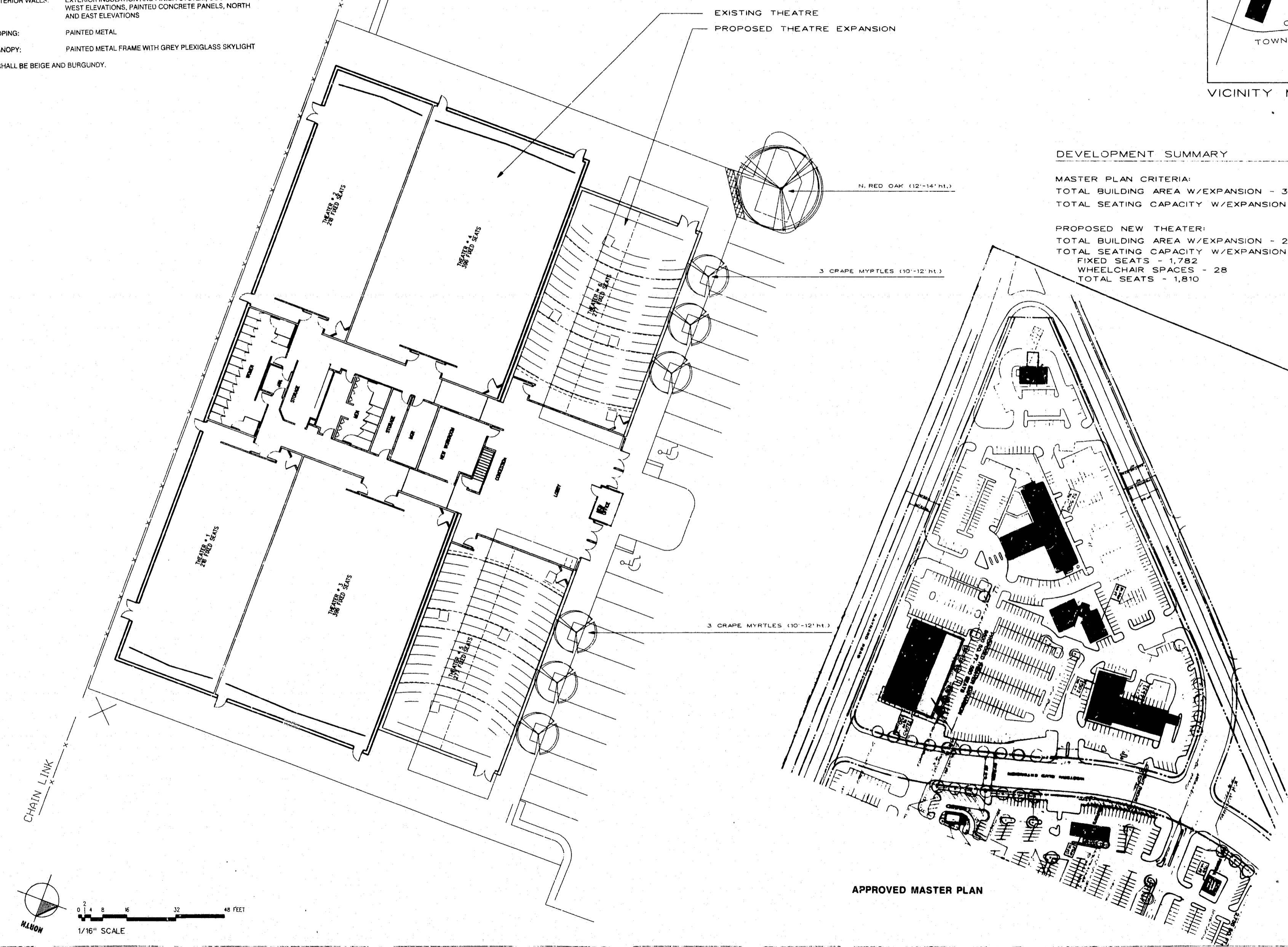
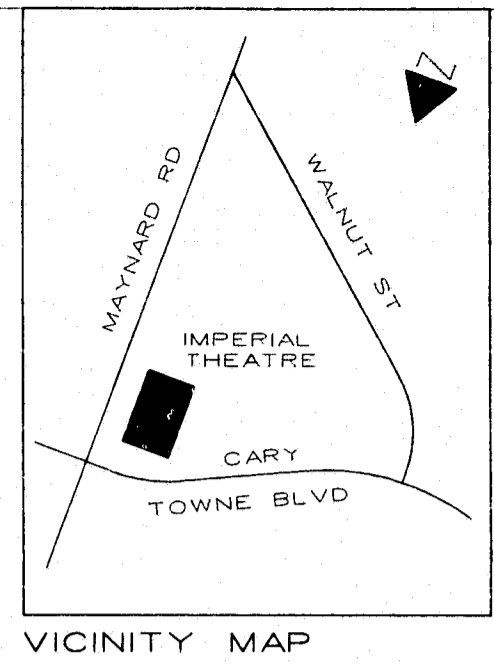
1. THIS ADDITION IS THE IMPLEMENTATION OF A PHASED EXPANSION AS SHOWN ON A PRIOR APPROVED MASTER PLAN. A PORTION OF THE APPROVAL DRAWING IS REPRODUCED ON THIS SHEET.
2. THE ELEVATIONS OF THE THEATER SHALL CONFORM IN CONCEPT WITH THE ATTACHED ELEVATION. MATERIALS SHALL BE AS FOLLOWS:

EXTERIOR WALLS: EXTERIOR INSULATION AND FINISH SYSTEM, SOUTH AND WEST ELEVATIONS. PAINTED CONCRETE PANELS, NORTH AND EAST ELEVATIONS

COPING: PAINTED METAL

CANOPY: PAINTED METAL FRAME WITH GREY PLEXIGLASS SKYLIGHT

COLOURS SHALL BE BEIGE AND BURGUNDY.

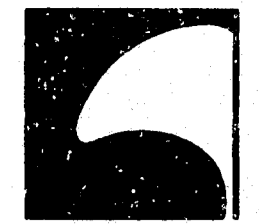
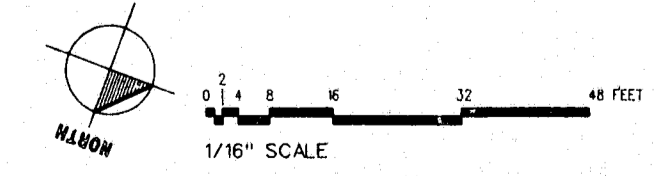


DEVELOPMENT SUMMARY

MASTER PLAN CRITERIA:
 TOTAL BUILDING AREA W/EXPANSION - 31,850 SQ. FT.
 TOTAL SEATING CAPACITY W/EXPANSION - 1,810 SEATS

PROPOSED NEW THEATER:
 TOTAL BUILDING AREA W/EXPANSION - 26,749 SQ. FT.
 TOTAL SEATING CAPACITY W/EXPANSION
 FIXED SEATS - 1,782
 WHEELCHAIR SPACES - 28
 TOTAL SEATS - 1,810

APPROVED MASTER PLAN



HagerSmith
Design PA

Architecture
Landscape Architecture
Planning
Interior Design

PO Box 1308
300 South Dawson Street
Raleigh, North Carolina 27602
Fax: 919.828.4050

919.821.5547 © Copyright 1994

STRUCTURAL ENGINEER

Neville Engineering
8111 Old NC 86 Highway
Chapel Hill, North Carolina 27514
Phone: 919.942.5229

MECHANICAL / ELECTRICAL ENGINEER

EnviroDesign, Inc.
6551 S. Revere Parkway, Suite 235
Englewood, Colorado 80111
Phone: 303.799.1911

Imperial
Cinema
Theatre

United Artists
Theatre Circuit, Inc.

9110 E. Nichols Avenue
Suite 200
Englewood, Colorado 80112

SP-16L-AD-94
APPROVED
12/20/94 PLANN. DIR.
3-2-94
JCS

"SPECIAL APPROVED PLAN"

SITE PLAN

Number	Description	Date

Drawn By: JET
 Checked By: JET
 Date Issued: 1/14/94

L101
of