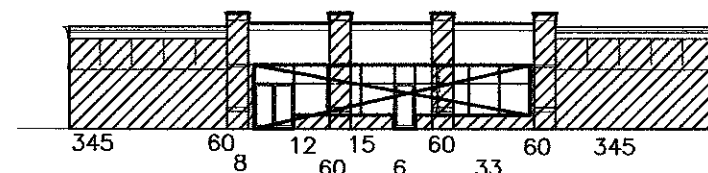


Bldg A South
 Total Facade Area= 15,985sf
 Areas of Windows and Doors= 5,191sf
 Total Wall area for Material Calculations= 9,973sf
 Area of Brick/Stone/Cast Conc: 5,352sf

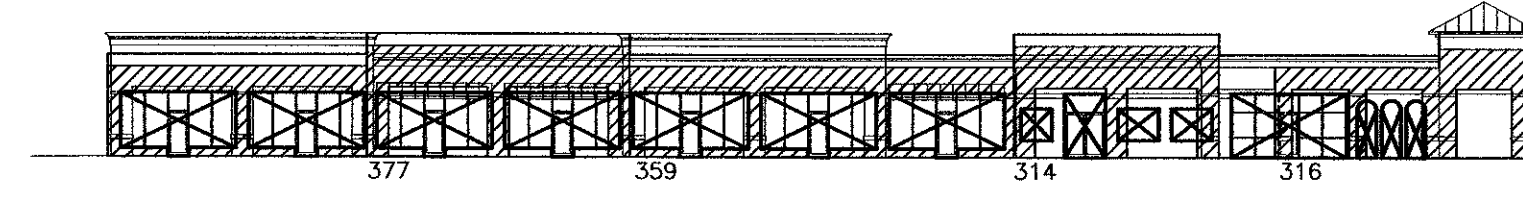
Cumulative Totals Proposed
 Total Facade Area= 28,968sf
 Areas of Windows and Doors= 6,685sf
 Total Wall area for Material Calculations= 22,283sf
 Area of Brick/Stone/Cast Conc: 11,085sf/49.7%
 Area of Stucco/Metal/ Other: 11,198sf/50.3%

BLDG A: SOUTH FACADE



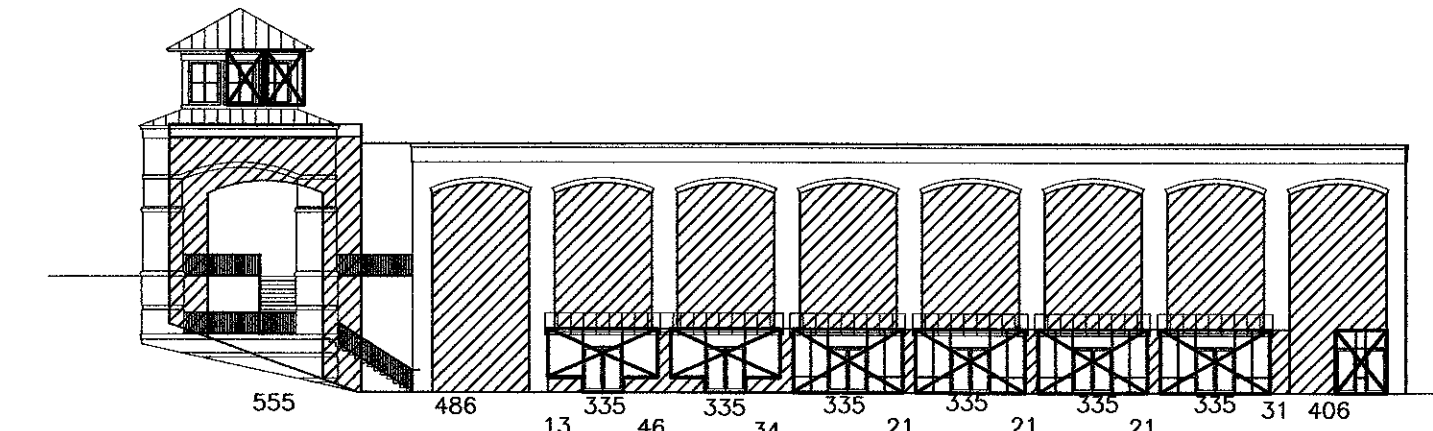
Bldg B West
 Total Facade Area= 1,667sf
 Areas of Windows and Doors= 359sf
 Total Wall area for Material Calculations = 1,308sf
 Area of Brick/Stone/Cast Conc: 806sf

BLDG B: WEST FACADE



Bldg A West
 Total Facade Area= 3,853sf
 Areas of Windows and Doors= 838sf
 Total Wall area for Material Calculations= 3,015sf
 Area of Brick/Stone/Cast Conc: 1,263sf

BLDG A: WEST FACADE

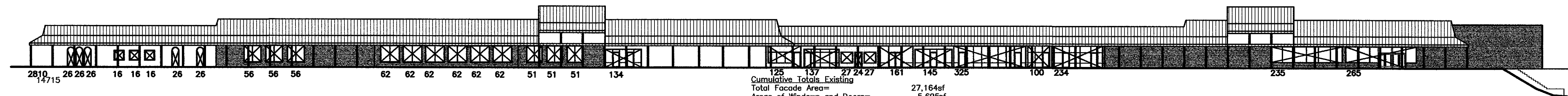


Bldg A East
 Total Facade Area= 7,463sf
 Areas of Windows and Doors= 1,758sf
 Total Wall area for Material Calculations= 5,338sf
 Area of Brick/Stone/Cast Conc: 3,644sf

BLDG A: EAST FACADE

1. MATERIALS OVERLAY
 SCALE: 1" = 30'

1

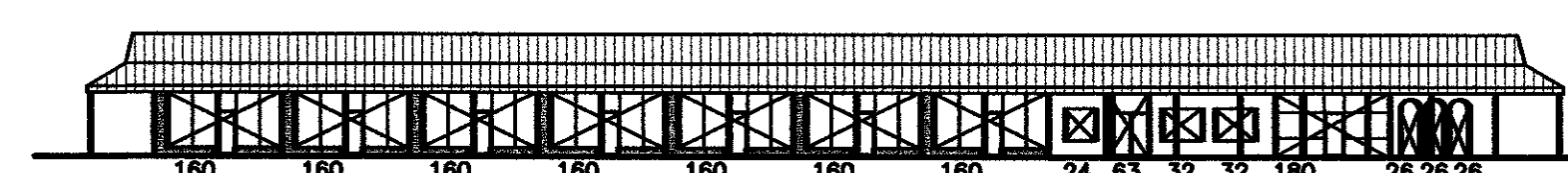


Cumulative Totals Existing
 Total Facade Area= 27,164sf
 Areas of Windows and Doors= 5,695sf
 Total Wall area for Material Calculations= 21,469sf
 Area of Brick/Stone/Cast Conc: 7,439sf/34.6%
 Area of Stucco/Metal/ Other: 14,030sf/65.4%

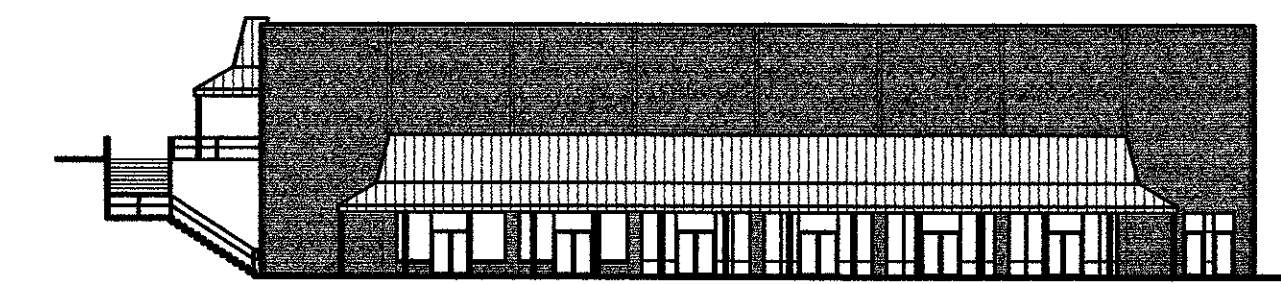
BLDG A: SOUTH FACADE



BLDG B: WEST FACADE



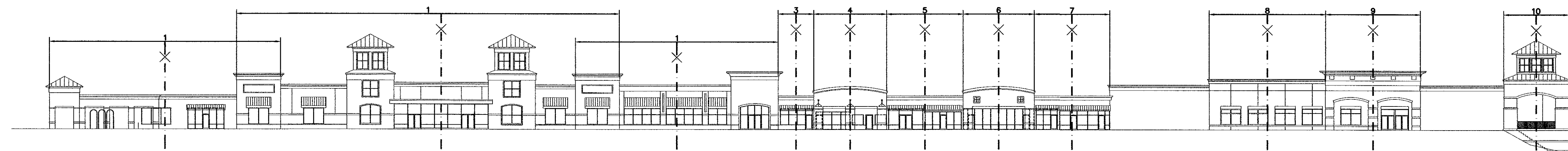
BLDG A: WEST FACADE



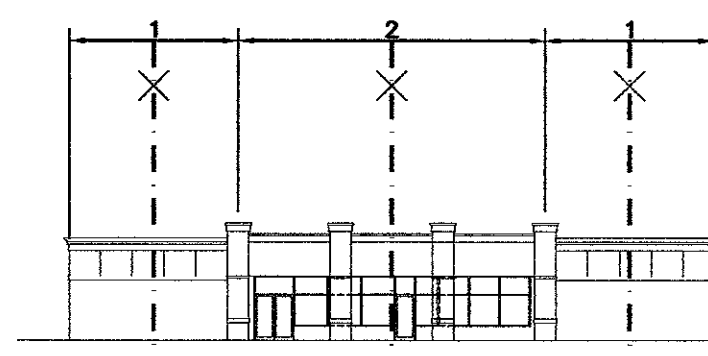
BLDG A: EAST FACADE

1. MATERIALS: EXISTING MASONRY
 SCALE: 1" = 30'

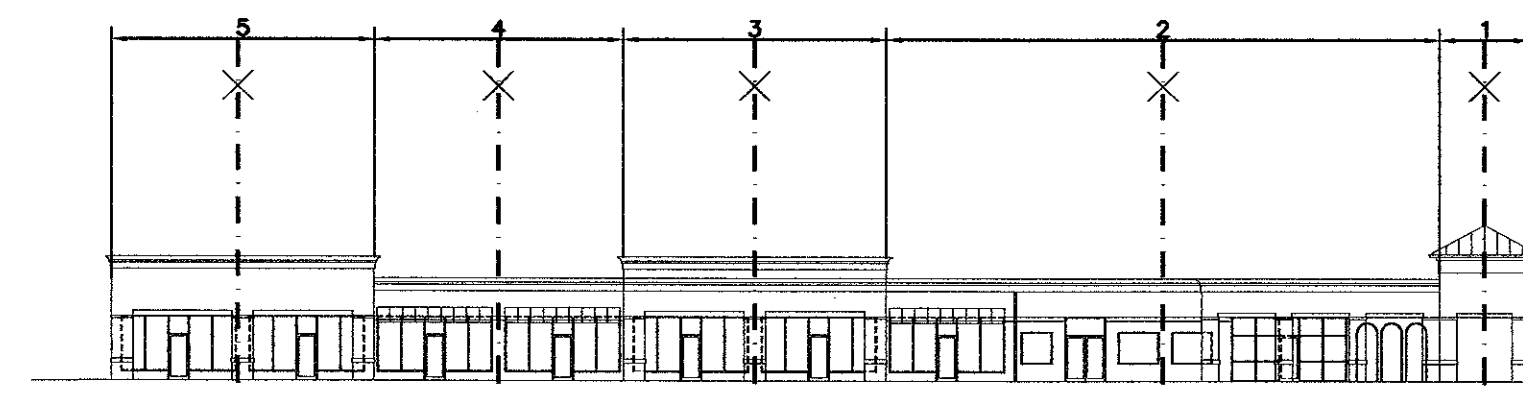
1A



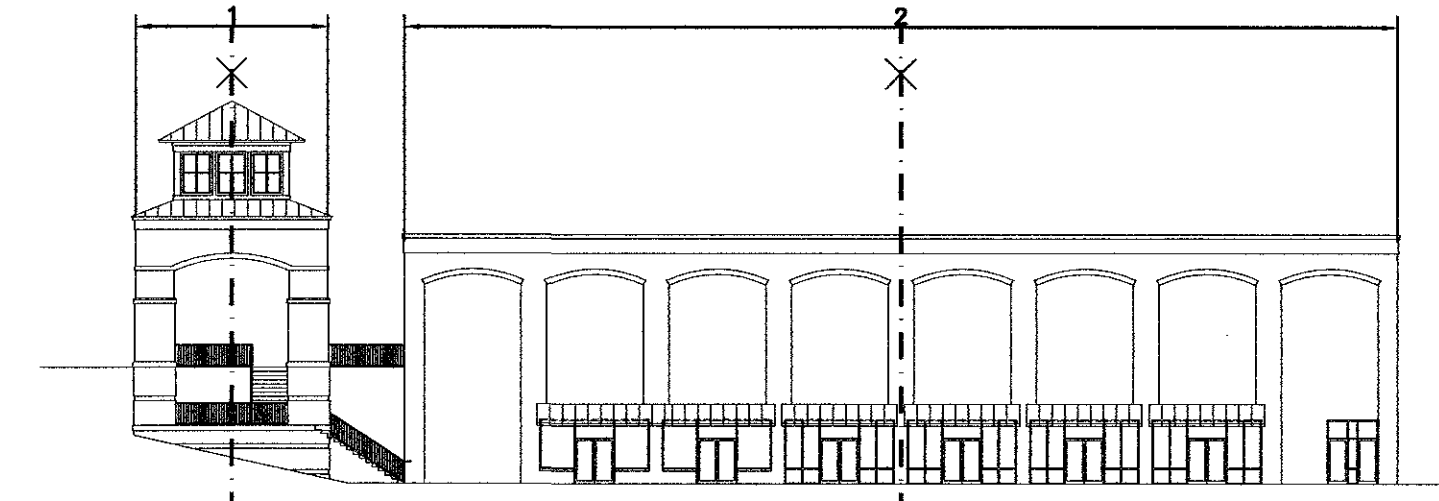
BLDG A: SOUTH FACADE



BLDG B: WEST FACADE



BLDG A: WEST FACADE

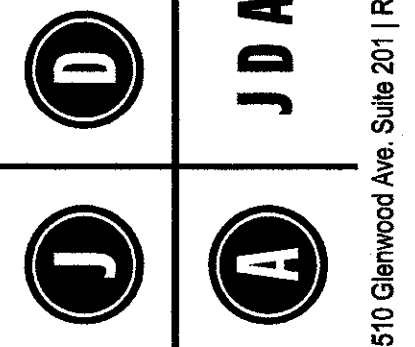


BLDG A: EAST FACADE

05-SP-113
 APPROVED
 TOWN OF CARY
 APPROVED BY: DRC DATE 11-21-05
 PLANNING: MR DATE 1-30-06
 ENGINEERING: TS DATE 1-31-06

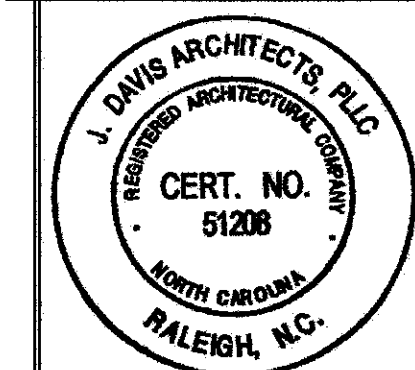
2. COMPOSITION OVERLAY
 SCALE: 1" = 30'

2



J DAVIS ARCHITECTS
 510 Glenwood Ave. Suite 201 | Raleigh, NC 27603 | Tel 919.835.1600 | Fax 919.835.1510

Cary Village Square
 Facade Renovations
 Cary, NC



PROJECT:	05083	DATE
REVISIONS:	SITE PLAN RESPONSE	10-15-2005
	FINAL STAFF COMM	10-28-05
		12-06-2005

DRAWN BY: EAH
 CHECKED BY:
 CONTENT:

A3-F0

© 2005 J. DAVIS ARCHITECTS EXPRESSLY RESERVES ITS COMMON LAW COPYRIGHT AND OTHER PROPERTY RIGHTS IN THESE PLANS. THESE PLANS ARE NOT TO BE REPRODUCED, CHANGED OR COPIED IN ANY FORM OR MANNER WHATSOEVER, NOR ARE THEY TO BE ASSIGNED TO ANY THIRD PARTY WITHOUT FIRST OBTAINING WRITTEN PERMISSION AND CONSENT OF J. DAVIS ARCHITECTS, P.L.L.C.