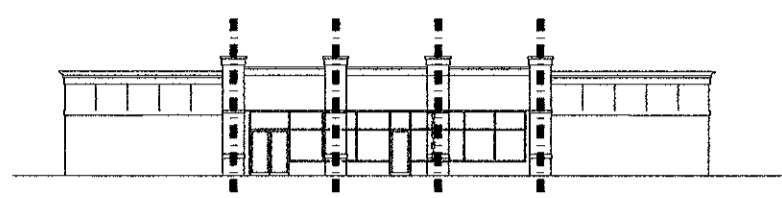
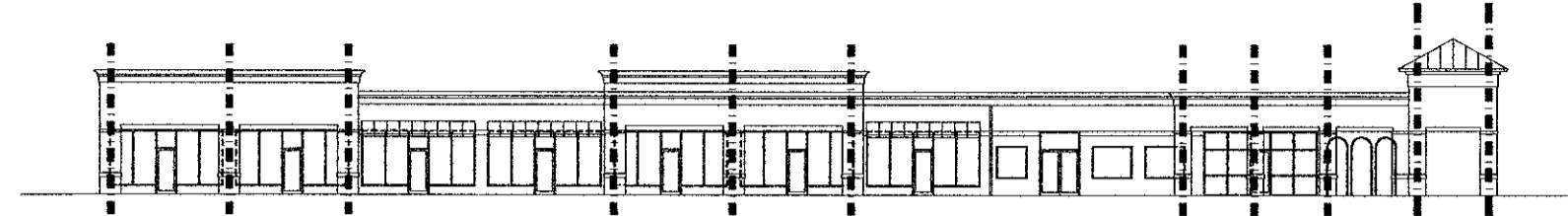


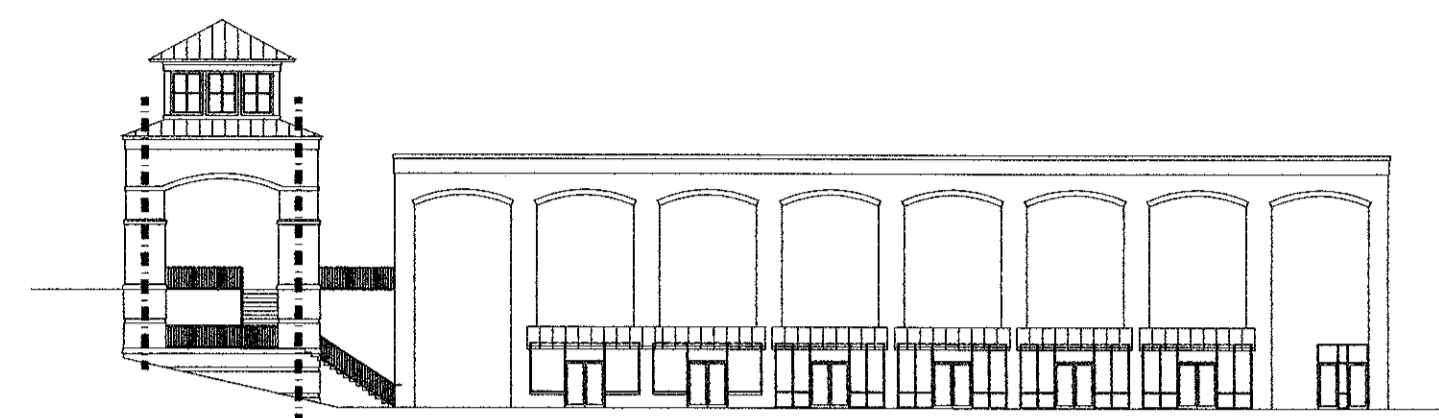
BLDG A: SOUTH FACADE



BLDG B: WEST FACADE



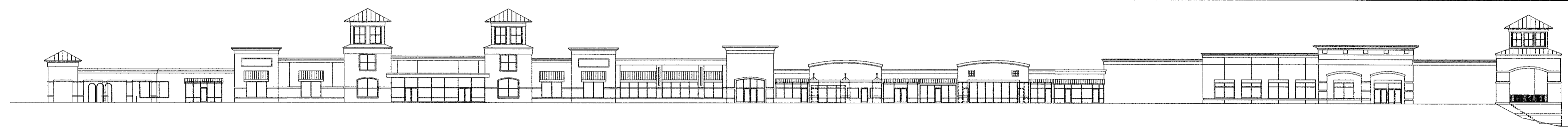
BLDG A: WEST FACADE



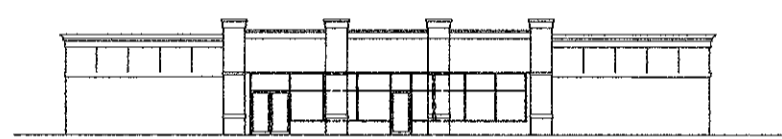
BLDG A: EAST FACADE

8. EXPRESSION OVERLAY  
SCALE: 1" = 30'

1



BLDG A: SOUTH FACADE

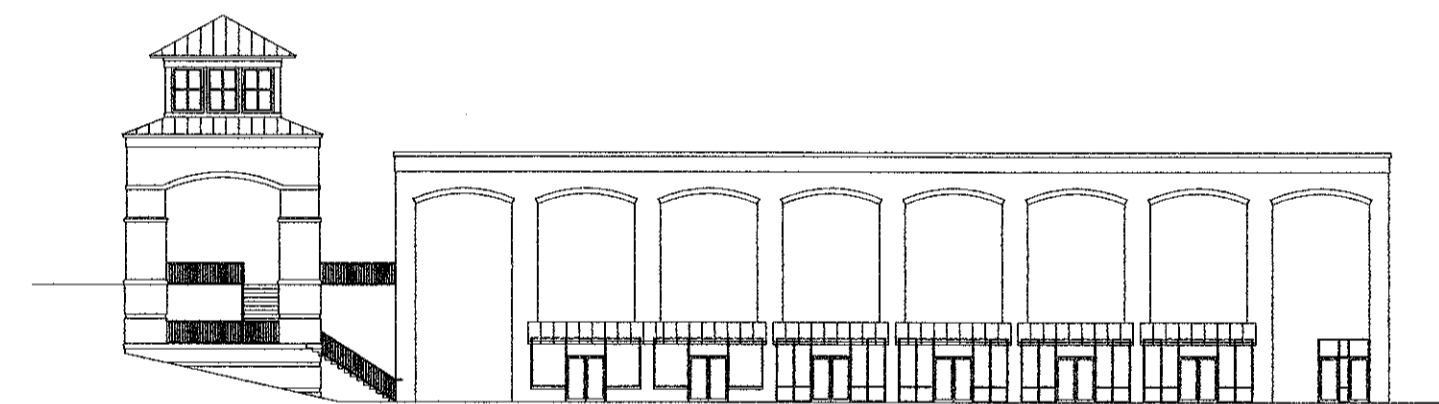


BLDG B: WEST FACADE



BLDG A: WEST FACADE

NOTE: COLOR OVERLAYS SHOW BUILDING DIVISIONS ONLY. PLEASE SEE COLOR MATERIAL SAMPLE BOARD FOR COLOR SCHEME.



BLDG A: EAST FACADE

9. COLOR OVERLAY  
SCALE: 1" = 30'

2

APPROVED COLORS ARE FROM MAIN ST. COLLECTION MANUF. BY JOHN BOYLE & COMPANY.

- \* 200MS+ RED
- \* 208MS+ PURPLE
- \* 216MS+ BLUE
- \* 204MS+ DARK GREEN
- \* 213MS+ GREY
- \* 214MS+ BLACK

EACH BUILDING SEGMENT MAY HAVE ONE AWNING COLOR, EXCEPT SEGMENT 15 WHICH MAY HAVE ONE COLOR PER TENANT SPACE.

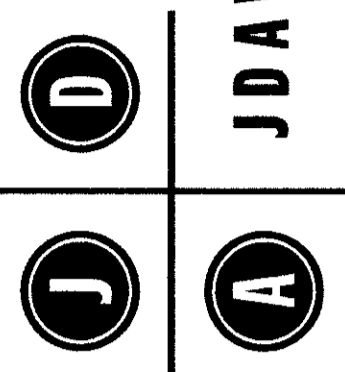
05-SP-113  
APPROVED  
TOWN OF CARY

APPROVED BY DRC DATE 11-21-05  
PLANNING AZ DATE 1-30-06  
ENGINEERING TS DATE 1-31-06

NOT USED  
SCALE: 1" = 30'

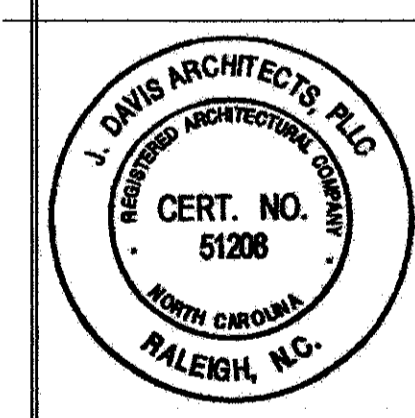
3

© 2005 J. DAVIS ARCHITECTS. ALL RIGHTS RESERVED. THESE PLANS ARE NOT TO BE REPRODUCED, CHANGED OR COPIED IN ANY FORM OR MANNER WHATSOEVER, NOR ARE THEY TO BE ASSIGNED TO ANY THIRD PARTY WITHOUT FIRST OBTAINING THE EXPRESSED WRITTEN PERMISSION AND CONSENT OF J. DAVIS ARCHITECTS, PLLC.



J DAVIS ARCHITECTS  
510 Glenwood Ave. Suite 201 | Raleigh, NC 27603 | Tel: 919.835.1900 | Fax: 919.835.1510

Cary Village Square  
Facade Renovations  
Cary, NC



PROJECT:	05083	DATE	10-15-2005
REVISIONS:	SITE PLAN RESPONSE		10-28-2005
	FINAL STAFF COMM.		12-06-2005

DRAWN BY: EAH  
CHECKED BY:

CONTENT:  
A6-F0