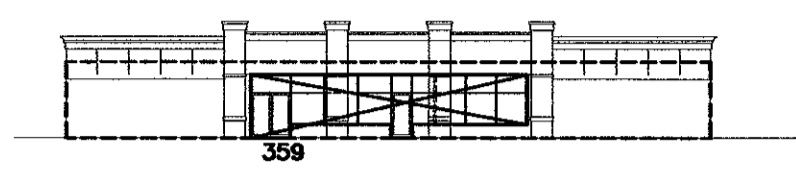


Bldg A South  
Facade Area= 10,455sf  
Areas of Windows and Doors provided= 3,670sf

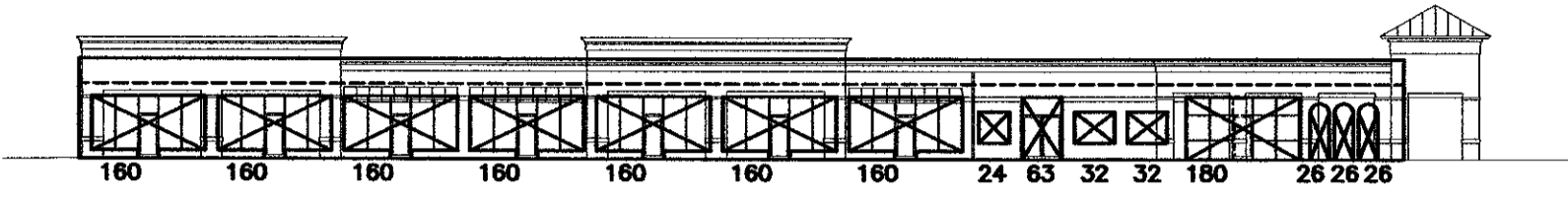
Cumulative Total Proposed  
Facade Area= 17,440sf  
Areas of Windows and Doors provided= 6,614sf = 37.9%

BLDG A: SOUTH FACADE



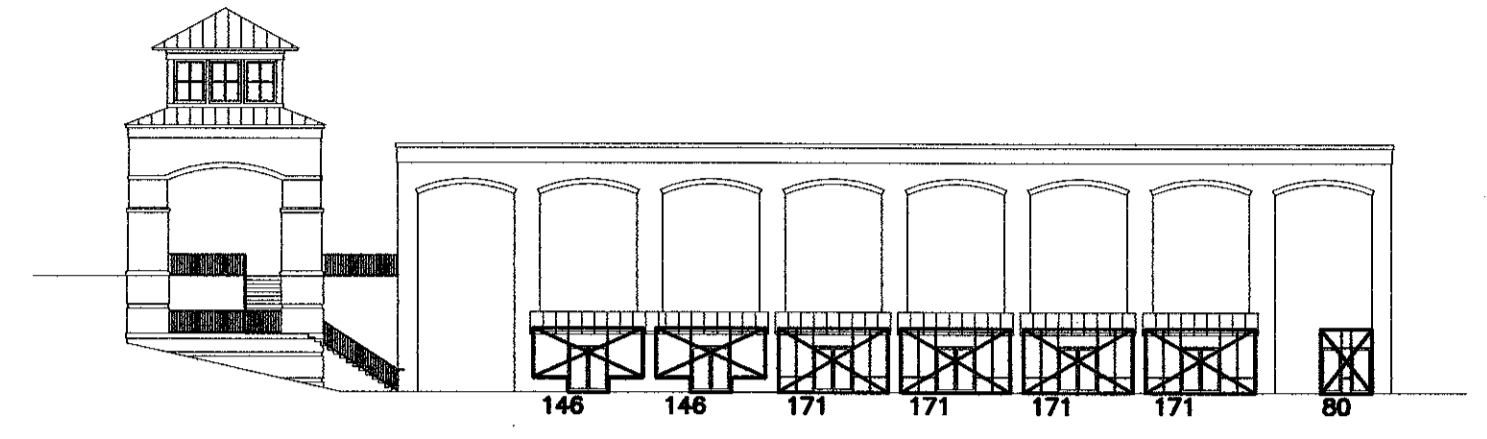
Bldg B West  
Facade Area= 1,510sf  
Areas of Windows and Doors provided= 359sf

BLDG B: WEST FACADE



Bldg A West  
Facade Area= 3,150sf  
Areas of Windows and Doors provided= 1,529sf

BLDG A: WEST FACADE

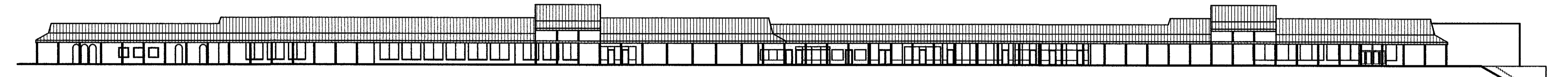


Bldg A East  
Facade Area= 2,325sf  
Areas of Windows and Doors provided= 1,056sf

BLDG A: EAST FACADE

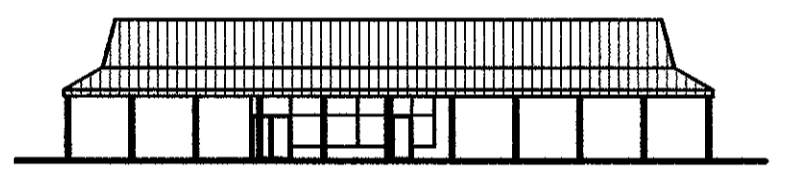
6. TRANSPARENCY OVERLAY  
SCALE: 1" = 30'

1

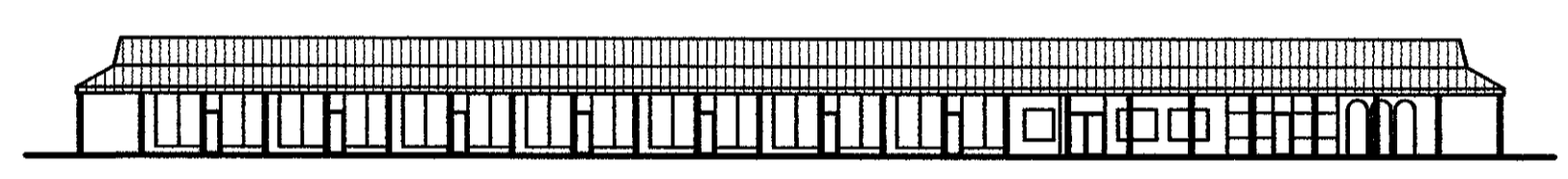


Cumulative Total Existing  
Facade Area= 17,440sf  
Areas of Windows and Doors provided= 5,650sf = 32.3%

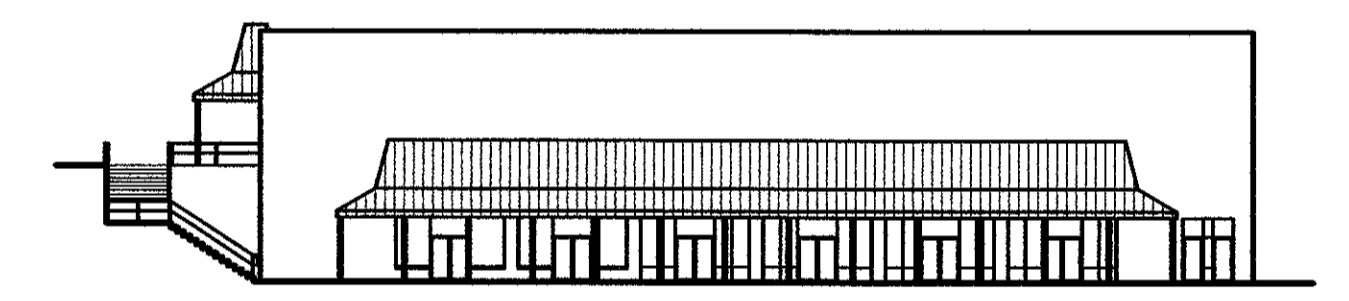
BLDG A: SOUTH FACADE



BLDG B: WEST FACADE



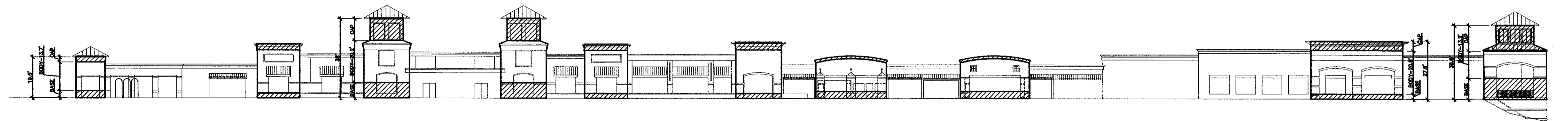
BLDG A: WEST FACADE



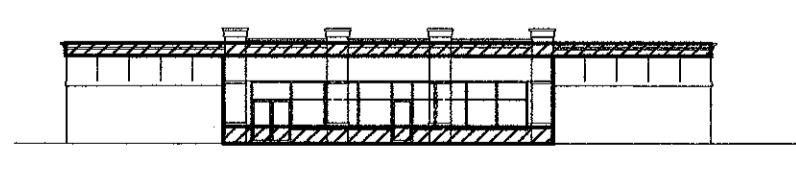
BLDG A: EAST FACADE

6. TRANSPARENCY: EXISTING GLASS  
SCALE: 1" = 30'

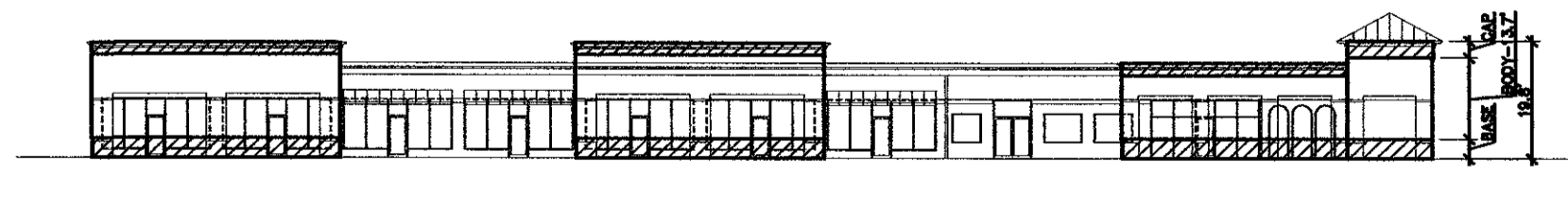
1A



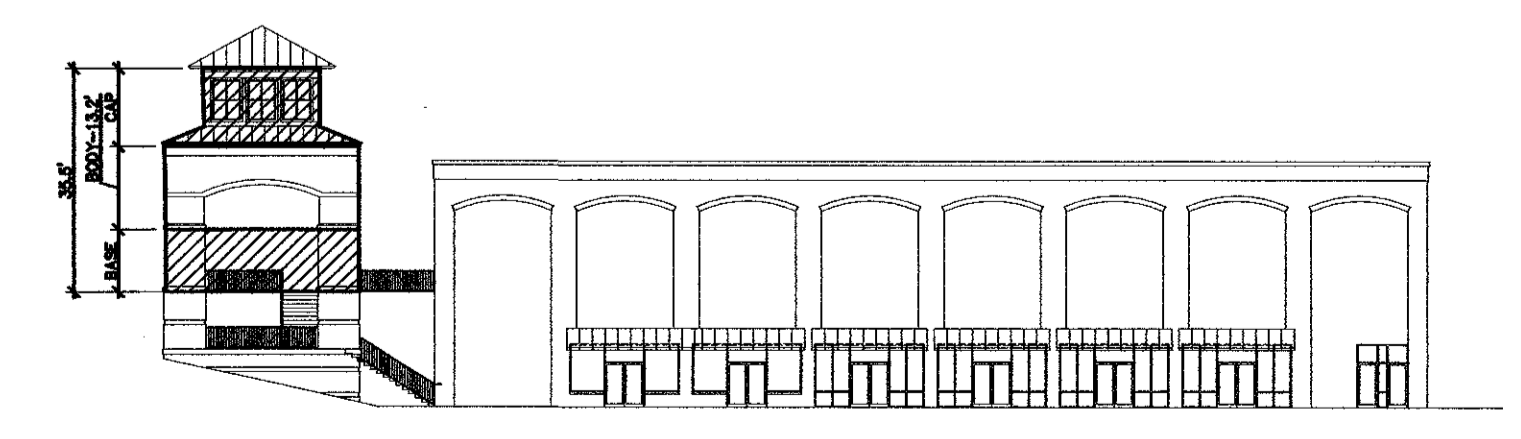
BLDG A: SOUTH FACADE



BLDG B: WEST FACADE



BLDG A: WEST FACADE



BLDG A: EAST FACADE

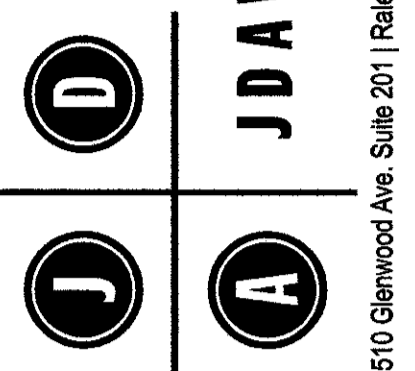
05-SP-113  
APPROVED  
TOWN OF CARY

APPROVED BY: DRC DATE: 11-21-05  
PLANNING: AR DATE: 1-30-06  
ENGINEERING: TS DATE: 1-31-06

7. ARTICULATION OVERLAY  
SCALE: 1" = 30'

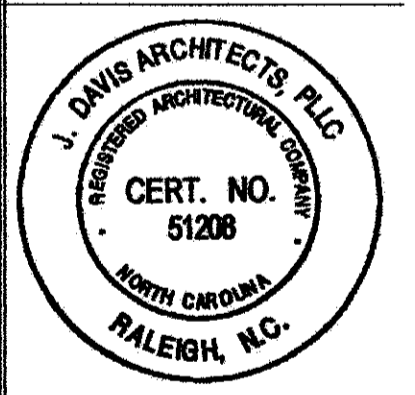
2

© 2005 J.DAVIS ARCHITECTS EXPRESSLY RESERVES ITS COMMON LAW COPYRIGHT AND OTHER PROPERTY RIGHTS IN THESE PLANS. THESE PLANS ARE NOT TO BE REPRODUCED, CHANGED OR COPIED IN ANY FORM OR MANNER WHATSOEVER, NOR ARE THEY TO BE ASSIGNED TO ANY THIRD PARTY WITHOUT FIRST OBTAINING WRITTEN PERMISSION AND CONSENT OF J.DAVIS ARCHITECTS, PLLC



**J DAVIS ARCHITECTS**  
510 Glenwood Ave. Suite 201 | Raleigh, NC 27603 | Tel: 919.835.1500 | Fax: 919.835.1510

**Cary Village Square  
Facade Renovations  
Cary, NC**



PROJECT:	05083	DATE:	10-15-2005
REVISIONS:	SITE PLAN RESPONSE	10-28-2005	
	FINAL STAFF COMM.	12-06-2005	

DRAWN BY: EAH  
CHECKED BY:  
CONTENT:

**A5-FO**