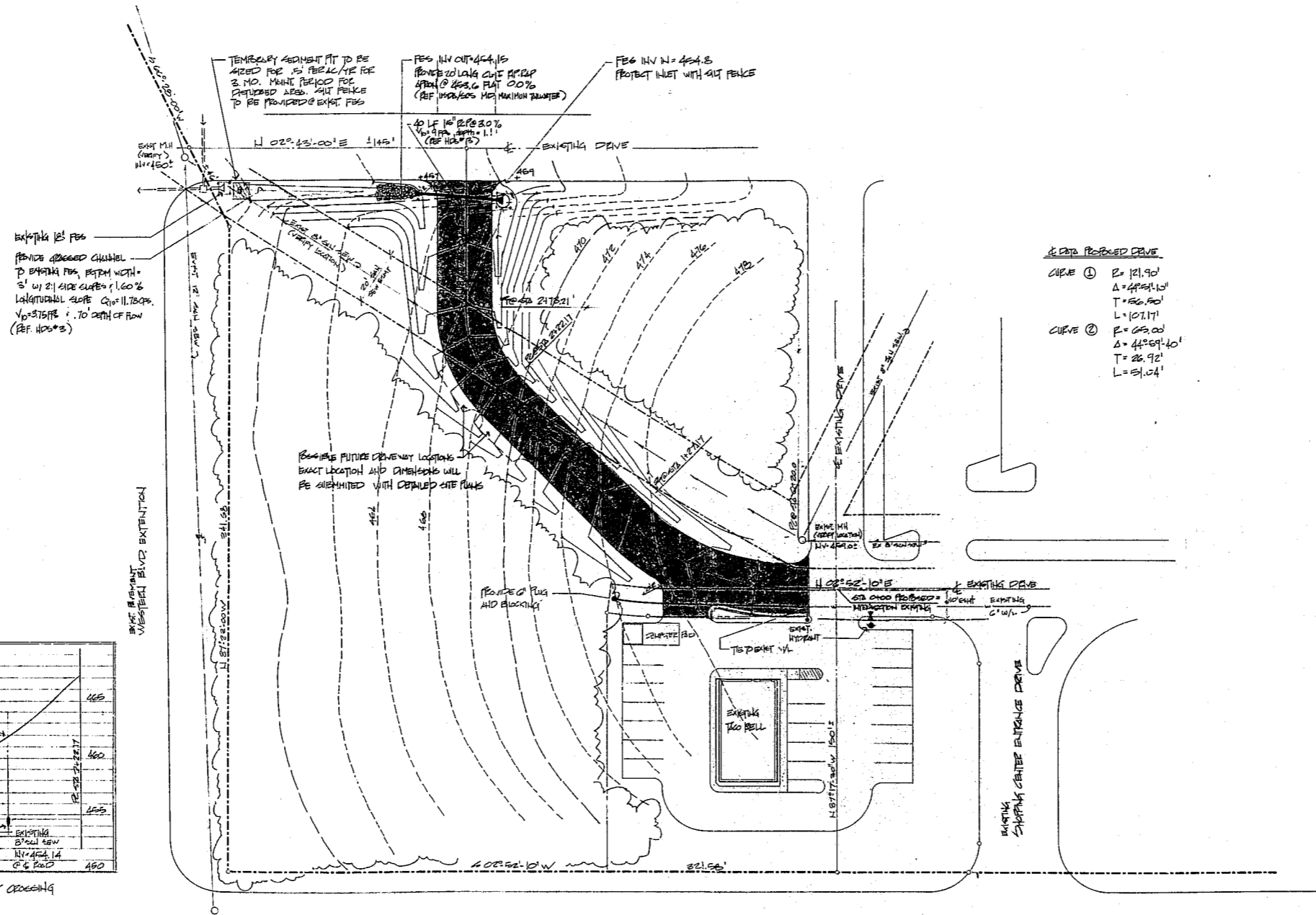


PROFILE OF SWH SEWER & DRIVEWAY CROSSING



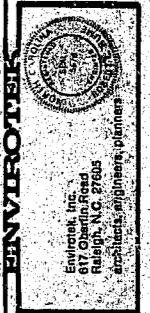
DATA PROPOSED CURVE

- CURVE ①
 $R = 121.90'$
 $\Delta = 44^{\circ}59'40''$
 $T = 66.80'$
 $L = 101.17'$
- CURVE ②
 $R = 69.00'$
 $\Delta = 44^{\circ}59'40''$
 $T = 28.92'$
 $L = 51.04'$



FOR PLAN APPROVAL
SITE PLAN
 PLAN SCALE 1"=30'

- NOTES
1. ALL CONSTRUCTION TO BE IN ACCORDANCE WITH TOWN OF CARY STANDARDS AND SPECIFICATIONS
 2. STORM DRAINAGE CALCULATIONS AND DETAILED SEDIMENTATION AND EROSION CONTROL MEASURES TO BE FURNISHED WITH SITE PLAN SUBMITTED FOR GRADING PERMIT.
 3. PRELIMINARY STORM DRAINAGE CALCULATIONS BASED ON 100 YEAR FLOW RATE. SEE SHEET 10-1 FOR MORE DETAILS. SEE SHEET 10-2 FOR MORE DETAILS.



FOR PLAN APPROVAL
PROPOSED DRIVEWAY
CARY VILLAGE SQUARE
 CARY, NORTH CAROLINA

DWG BY: [Signature]
 CHK BY: [Signature]

NOTES:
 1. 20' COT FEG
 2. 10' COT FEG
 3. 10' COT FEG
 4. 10' COT FEG
 5. 10' COT FEG
 6. 10' COT FEG
 7. 10' COT FEG
 8. 10' COT FEG
 9. 10' COT FEG
 10. 10' COT FEG

FOR PLAN APPROVAL

JOB NO. 2014-001
 DWG NO. PA 2