

Architects/Engineers/Planners  
3200 Beechleaf Court, Suite 901  
Raleigh, N.C. 27604  
tel. 919-781-0026  
fax 803-881-0999

ALL RIGHTS RESERVED. THIS DRAWING AND THE DESIGN SHOWN THEREON ARE COPYRIGHTED AS PROVIDED BY THE LAWS OF THE UNITED STATES AND ARE THE PROPERTY OF GMK ASSOCIATES ARCHITECTURAL FIRM, INC. ANYONE EXERCISING, REPRODUCING OR CAUSING TO BE REPRODUCED THE WHOLE OR PART OF THESE DRAWINGS OR THE DESIGN THEREON WITHOUT PERMISSION OF THE ARCHITECT WILL BE SUBJECT TO LEGAL ACTION.

consultants

owner



CARY, NC  
project name  
Hospice Additions  
project address  
200 Hospice Circle  
Raleigh, NC 27607  
NCDAHS project number  
TBD  
SCO project number  
16-12194-01A  
A/E project number  
14042.01

seals/signature



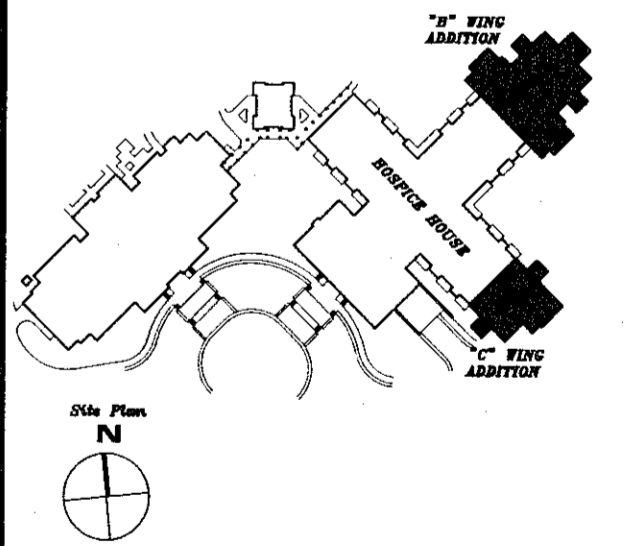
J. E. Johnson



Issued for  
**CONSTRUCTION DOCUMENTS**  
(ISSUED FOR PERMITS)  
date  
AUGUST 21, 2015

number	item	date
▲	Agency Review	01/08/2016
▲	Agency Resubmittal	04/29/2016
▲	Town of Cary Resubmittal	06/20/2016

key plan



Town of Cary approval

16-SP-014  
HTE#: 16-1062  
Approved by the Town of Cary  
Development Review Committee

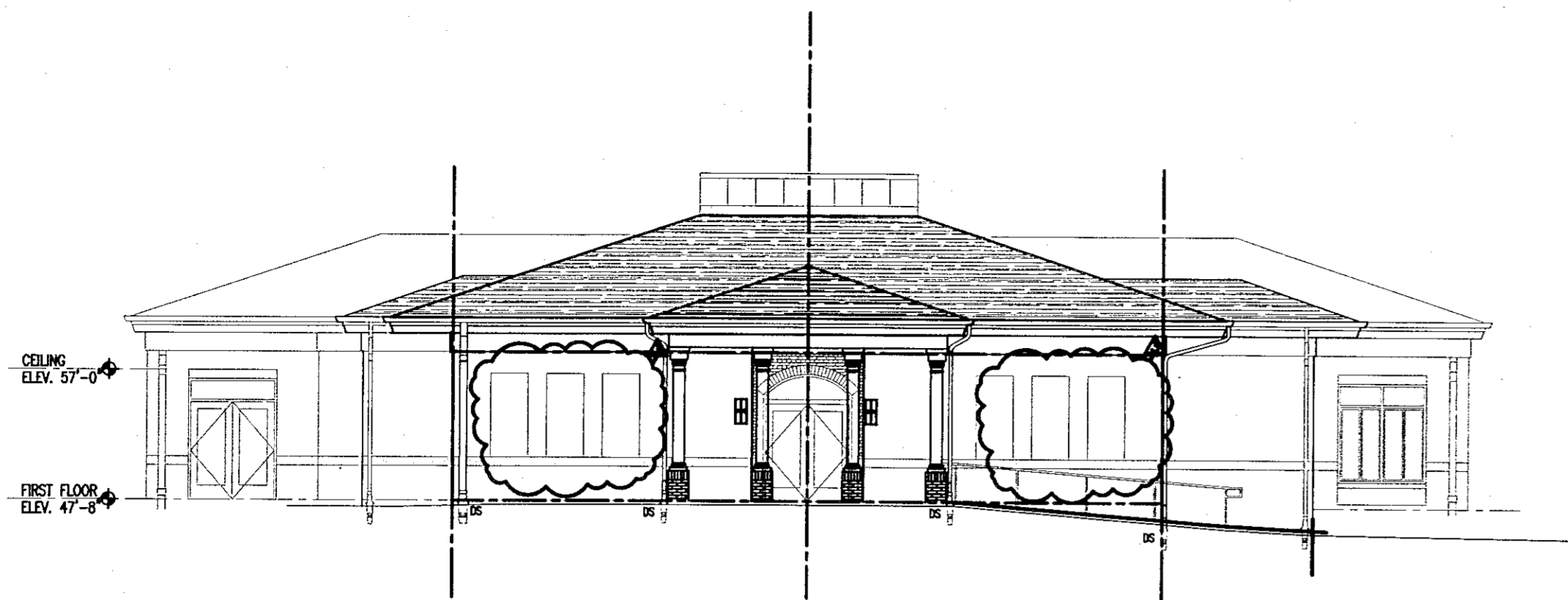
Planner: D.L. Date: 9/19/15

sheet title  
**OVERLAY 2**

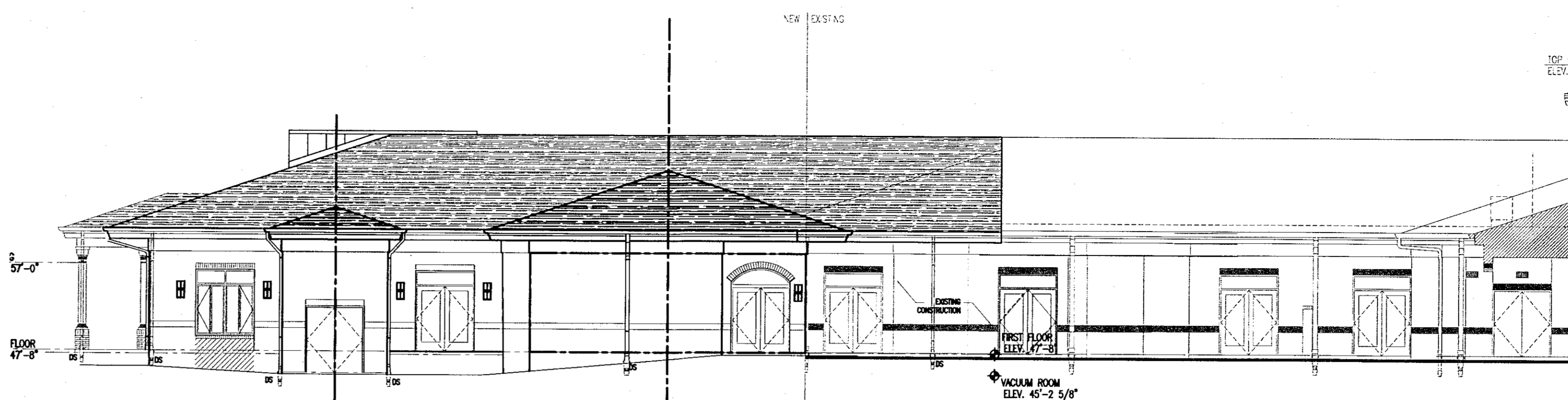
sheet number

**A11.2**

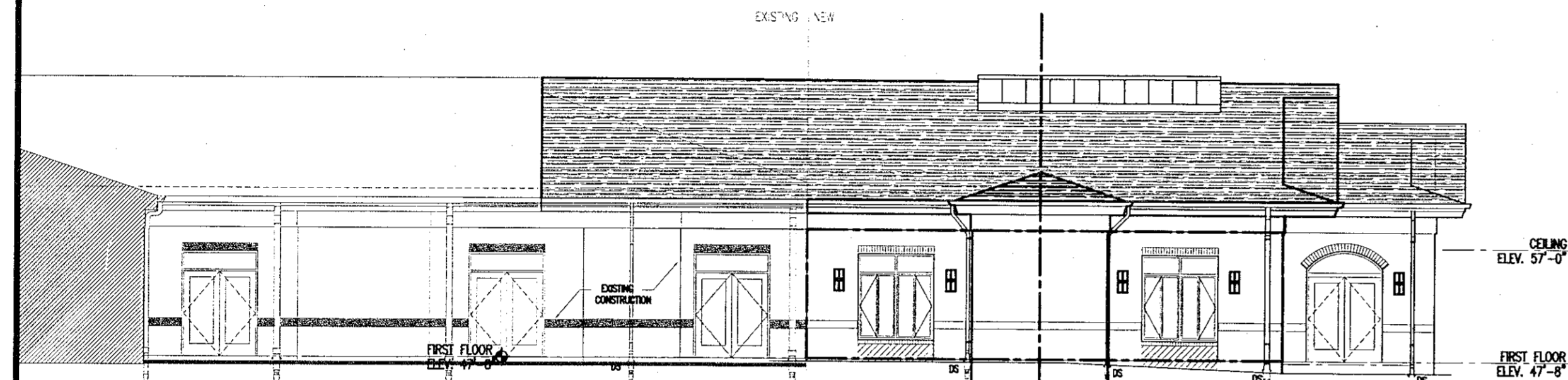
drawn by: SRN  
checked by: JER



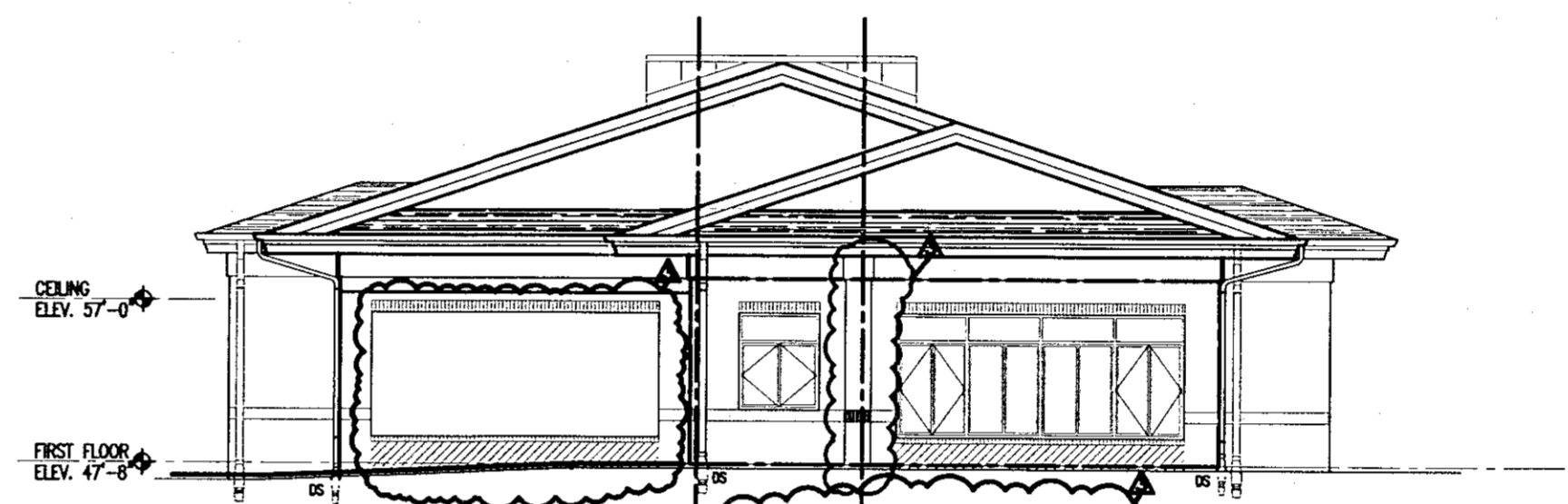
SEGMENT 1  
**1 EAST ELEVATION "B" WING**  
1/8"=1'-0"



SEGMENT 2  
SEGMENT 1  
**2 NORTH ELEVATION "B" WING**  
1/8"=1'-0"

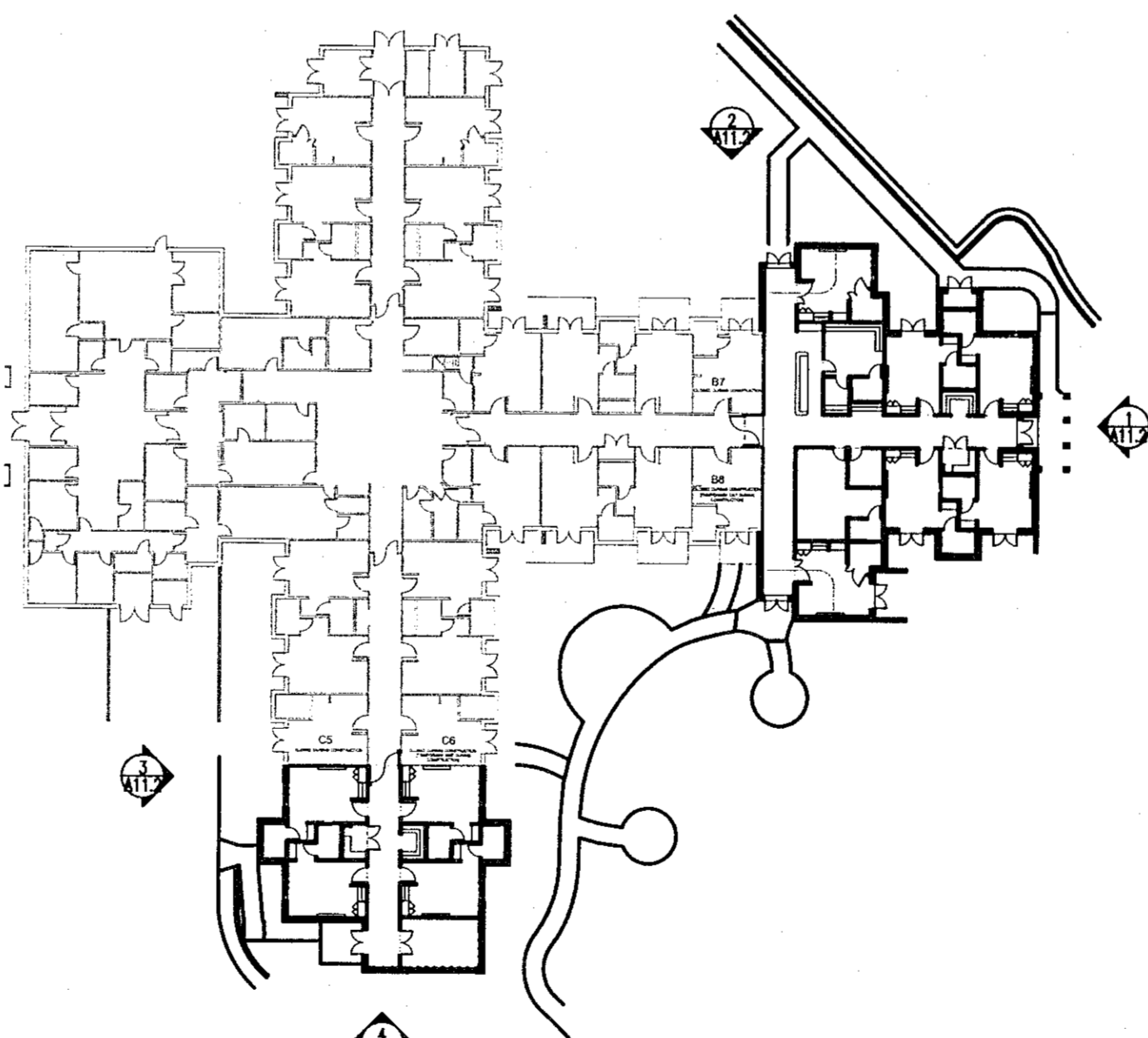


SEGMENT 1  
**3 WEST ELEVATION "C" WING**  
1/8"=1'-0"



SEGMENT 1 (CORRIDOR)  
SEGMENT 2 (SUNROOM)  
**4 SOUTH ELEVATION "C" WING**  
1/8"=1'-0"

**2: COMPOSITION OVERLAY**



**5 KEY PLAN**  
1/32"=1'-0"