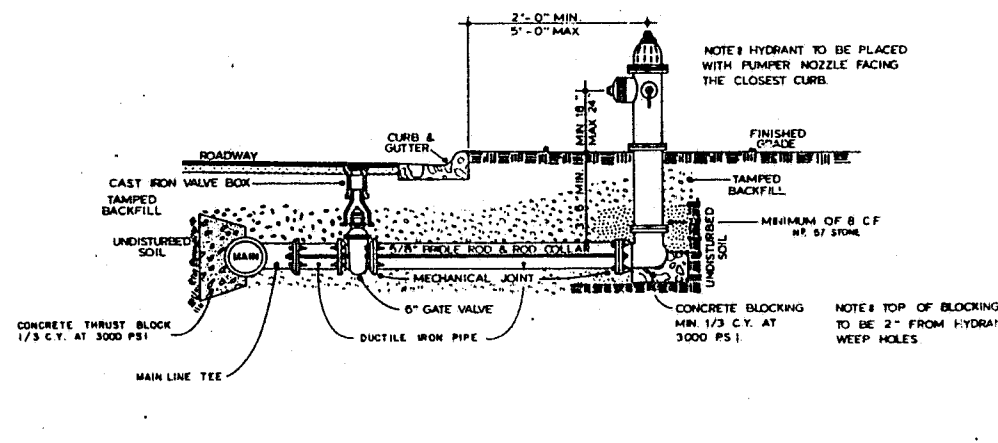
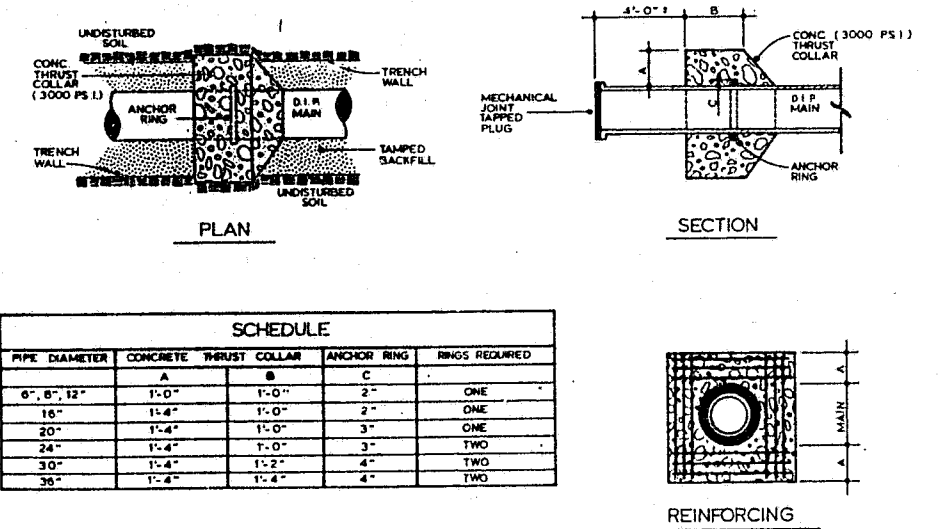


CARRIER PIPE STD. NO. 5.02



STANDARD HYDRANT INSTALLATION STD. NO. 6.05

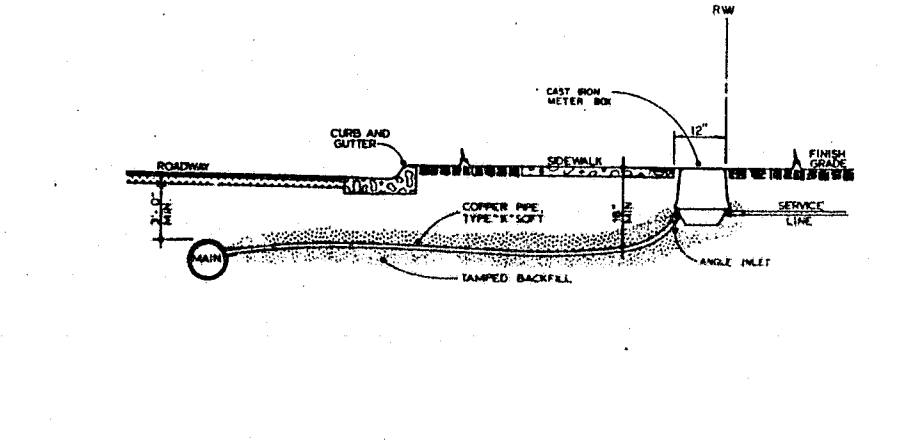


STANDARD THRUST COLLAR INSTALLATION STD. NO. 6.09

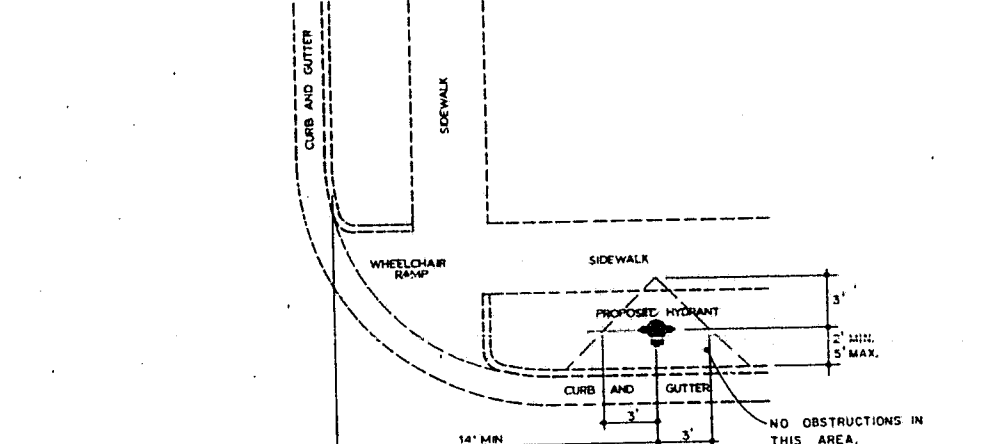
PIPE DIAMETER	CONCRETE THRUST COLLAR	ANCHOR RING	RINGS REQUIRED
6", 8", 12"	1'-0"	1'-0"	2"
16"	1'-4"	1'-0"	2"
20"	1'-4"	1'-0"	3"
30"	1'-4"	1'-2"	4"
36"	1'-4"	1'-4"	4"

NOM. PIPE DIA. IN.	MINIMUM CONCRETE BLOCKING (C.V.)*				
	TEES & DEAD ENDS	90° BEND	45° BEND	22 1/2° BEND	11 1/4° BEND
4	1/2	1/3	1/3	1/3	1/3
6	1/3	1/3	1/3	1/3	1/3
8	1/3	1/2	1/3	1/3	1/3
10	2/3	3/4	1/2	1/3	1/3
12	3/4	1.0	2/3	1/3	1/3
16	1.0	1.1	7/8	1/2	1/3
18	1 1/3	2.0	1.0	1/2	1/3
18	1 2/3	2 1/3	1 1/3	2/3	1/3
20	2.0	3.0	1 2/3	3/4	1/2
24	3.0	4 1/3	2 1/3	1 1/3	2/3

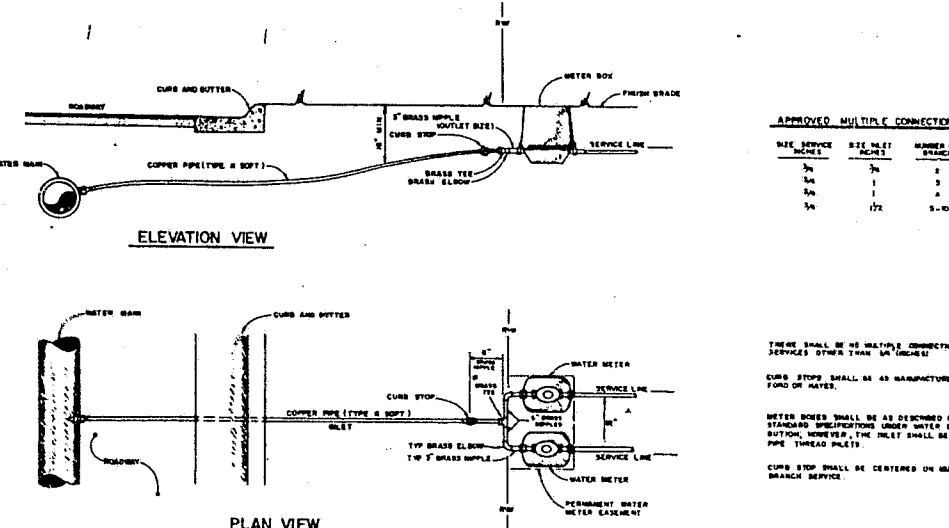
STANDARD REACTION BLOCKING STD. NO. 6.11



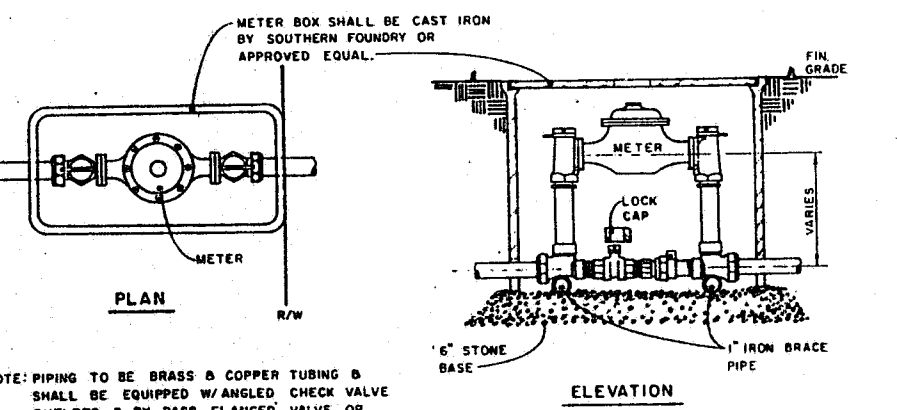
STANDARD 3/4" AND 1" METER BOX INSTALLATION STD. NO. 6.01



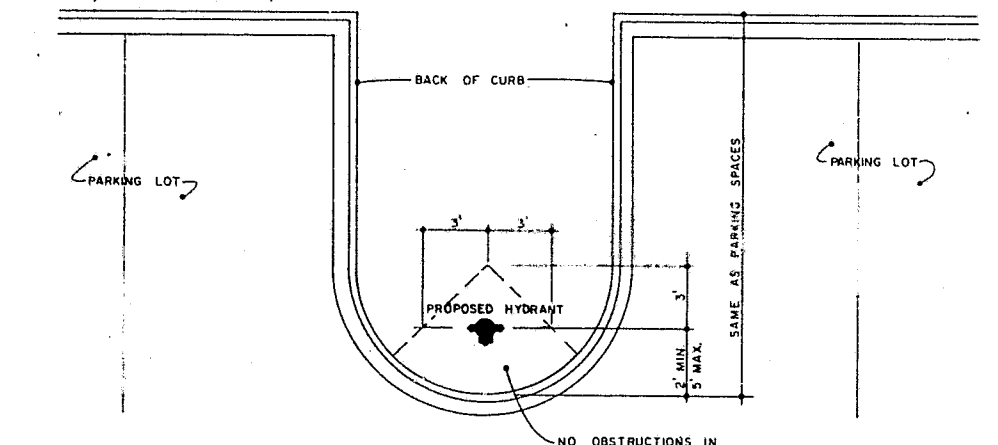
STANDARD HYDRANT LOCATION STD. NO. 6.06



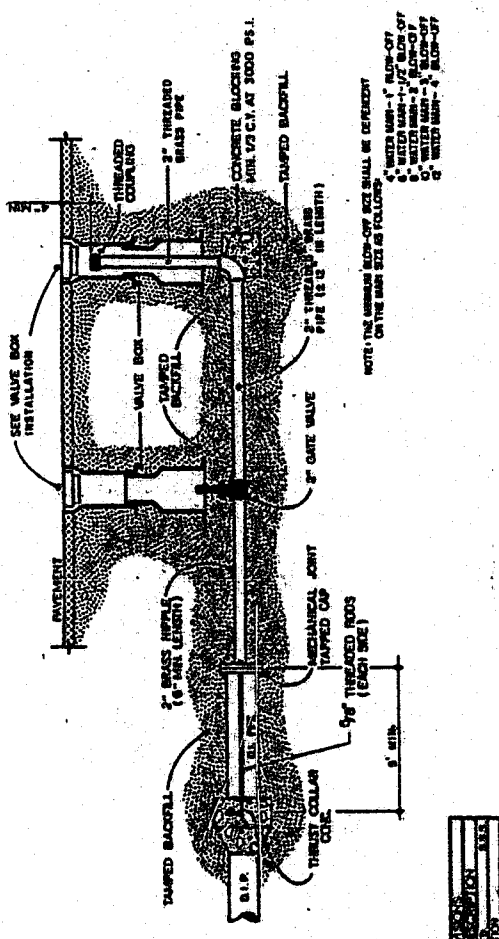
STANDARD MULTIPLE BRANCH SERVICES STD. NO. 6.12



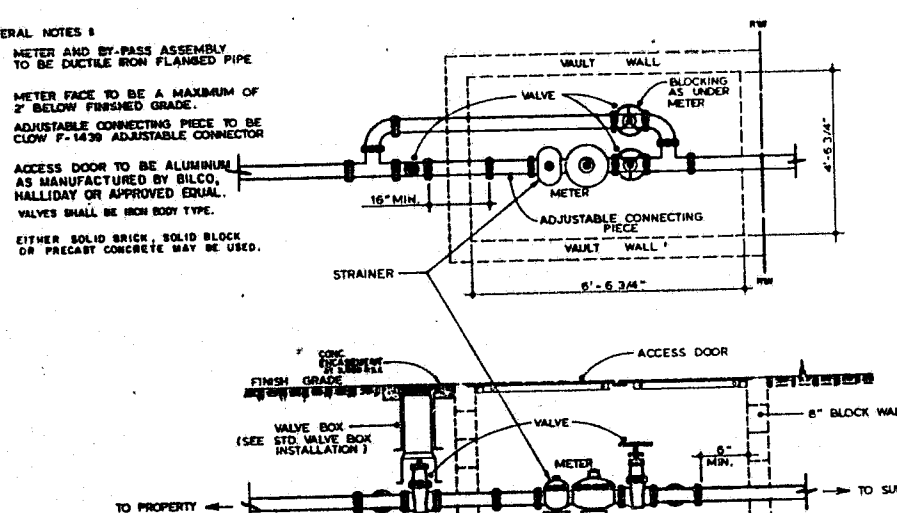
STANDARD 1 1/2" & 2" METER INSTALLATION AND VAULT STD. NO. 6.02



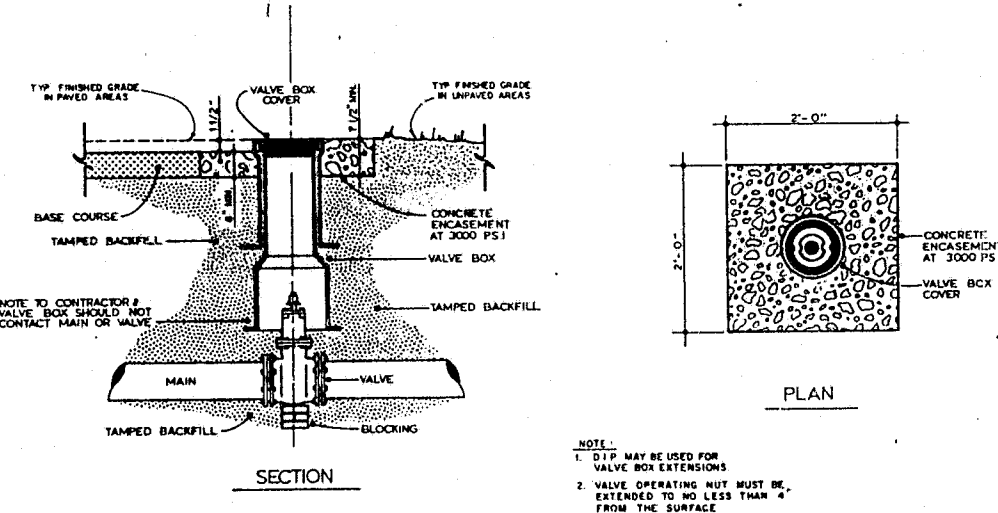
STANDARD HYDRANT LOCATION (FOR PARKING LOT) STD. NO. 6.06



STANDARD 2" BLOW-OFF ASSEMBLY STD. NO. 6.04



STANDARD 3" AND 4" METER INSTALLATION AND VAULT STD. NO. 6.03



STANDARD VALVE BOX INSTALLATION STD. NO. 6.07

WATER SYSTEM
CONSTRUCTION DETAILS
8-31-93
FOR CONSTRUCTION

REVISIONS
 NO. DATE DESCRIPTION
 1 11/15/93
 2 11/15/93
 3 11/15/93
 4 11/15/93
 5 11/15/93
 6 11/15/93
 7 11/15/93
 8 11/15/93
 9 11/15/93
 10 11/15/93
 11 11/15/93
 12 11/15/93
 13 11/15/93
 14 11/15/93
 15 11/15/93
 16 11/15/93
 17 11/15/93
 18 11/15/93
 19 11/15/93
 20 11/15/93
 21 11/15/93
 22 11/15/93
 23 11/15/93
 24 11/15/93
 25 11/15/93
 26 11/15/93
 27 11/15/93
 28 11/15/93
 29 11/15/93
 30 11/15/93
 31 11/15/93
 32 11/15/93
 33 11/15/93
 34 11/15/93
 35 11/15/93
 36 11/15/93
 37 11/15/93
 38 11/15/93
 39 11/15/93
 40 11/15/93
 41 11/15/93
 42 11/15/93
 43 11/15/93
 44 11/15/93
 45 11/15/93
 46 11/15/93
 47 11/15/93
 48 11/15/93
 49 11/15/93
 50 11/15/93
 51 11/15/93
 52 11/15/93
 53 11/15/93
 54 11/15/93
 55 11/15/93
 56 11/15/93
 57 11/15/93
 58 11/15/93
 59 11/15/93
 60 11/15/93
 61 11/15/93
 62 11/15/93
 63 11/15/93
 64 11/15/93
 65 11/15/93
 66 11/15/93
 67 11/15/93
 68 11/15/93
 69 11/15/93
 70 11/15/93
 71 11/15/93
 72 11/15/93
 73 11/15/93
 74 11/15/93
 75 11/15/93
 76 11/15/93
 77 11/15/93
 78 11/15/93
 79 11/15/93
 80 11/15/93
 81 11/15/93
 82 11/15/93
 83 11/15/93
 84 11/15/93
 85 11/15/93
 86 11/15/93
 87 11/15/93
 88 11/15/93
 89 11/15/93
 90 11/15/93
 91 11/15/93
 92 11/15/93
 93 11/15/93
 94 11/15/93
 95 11/15/93
 96 11/15/93
 97 11/15/93
 98 11/15/93
 99 11/15/93
 100 11/15/93

Rice & Associates
 Civil Engineering & Planning
 108 Greensview Drive Cary, North Carolina 27511
 Telephone: 919-233-8899 Fax: 919-233-9010

McDonald's
 2.966 ACRE TRACT
 WALNUT STREET AT CROSSROADS
 CARY, NORTH CAROLINA
 3200 BEECHLEAF COURT, SUITE 300
 RALEIGH, NORTH CAROLINA 27604

Horiz. Scale: 1" = 10'
 Vert. Scale: 1" = 4'
 DRAWING NUMBER
SP-8