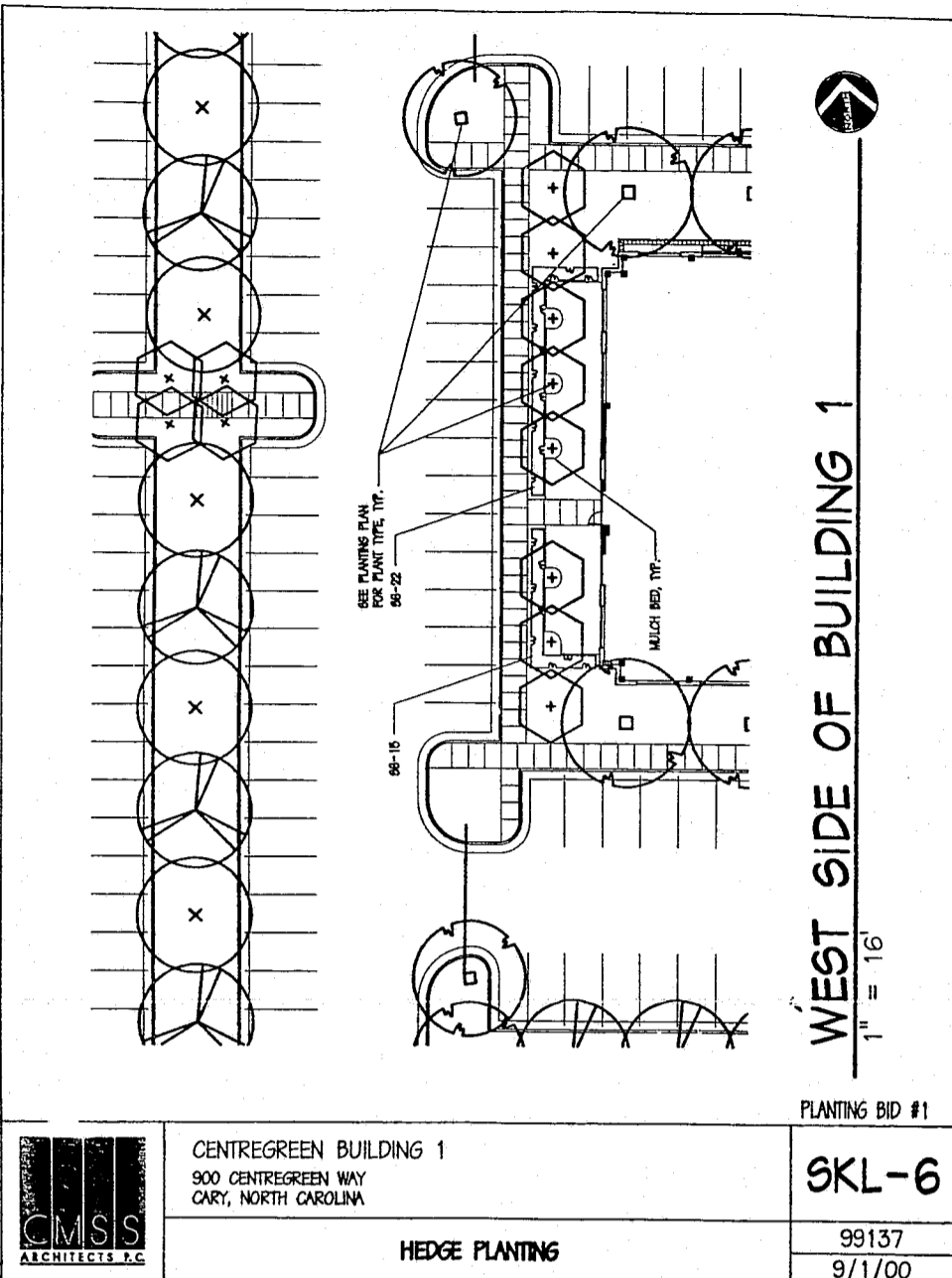


CMS Architects, P.C. reserves the rights under common law copyright and ownership rights in connection with the designs, concepts, and drawings presented in this document. This document(s) and/or design(s) shall not be reproduced, changed, or copied in any form or any manner, whatsoever, nor shall they be assigned to any third party without expressed written consent of CMS Architects, P.C. © 1999.

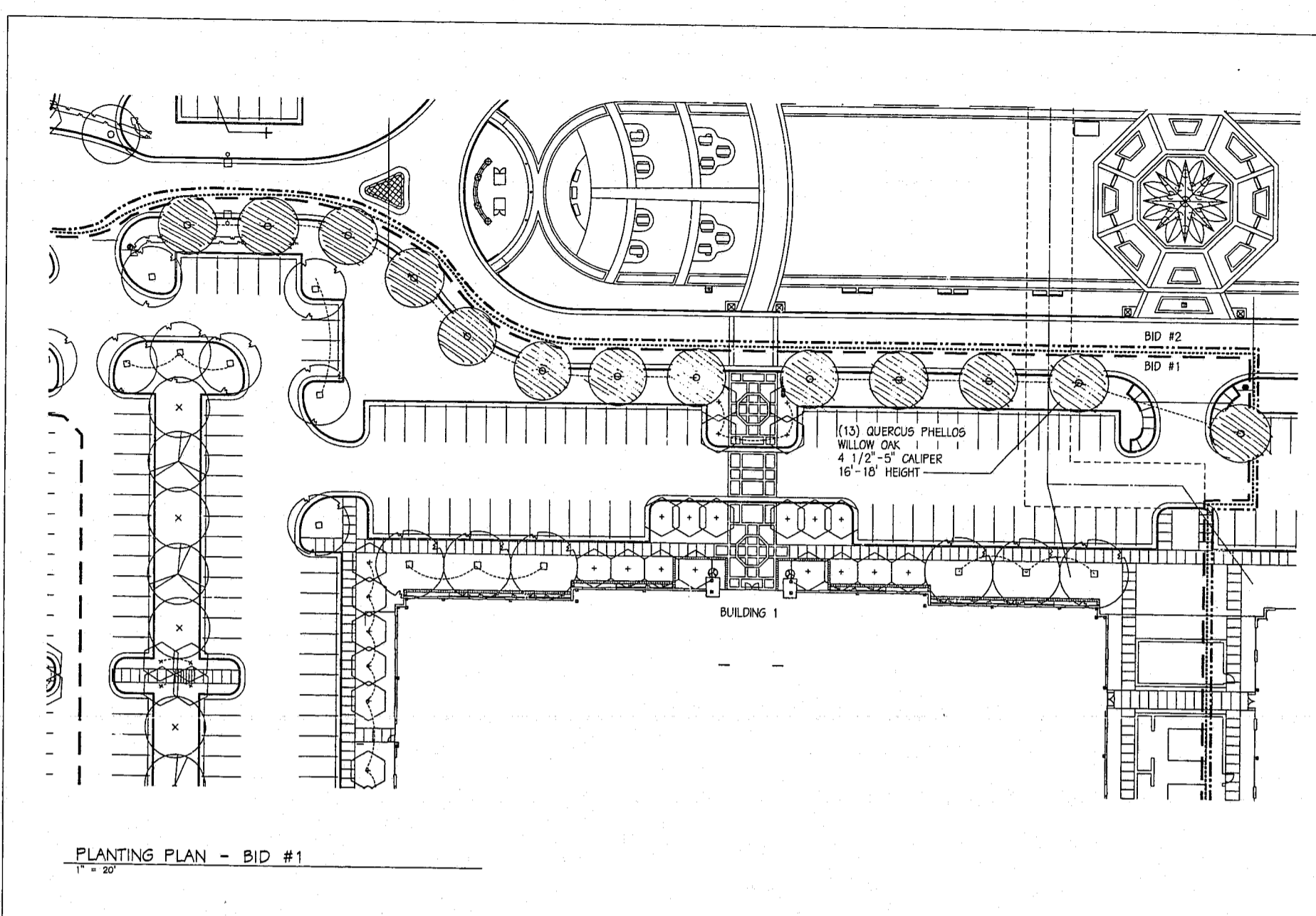


WEST SIDE OF BUILDING 1
1" = 16'

PLANTING BID #1

	CENTREGREEN BUILDING 1 900 CENTREGREEN WAY CARY, NORTH CAROLINA	SKL-6
	HEDGE PLANTING	99137
		9/1/00

W:\PROJECTS\99137\CENTREGREEN\DRAWINGS\LANDSCAPE\PLANTING\01-01-00-01.DWG, 09/01/00 10:41:10 AM



PLANTING PLAN - BID #1
1" = 20'

CMS Architects, P.C. reserves the rights under common law copyright and ownership rights in connection with the designs, concepts, and drawings presented in this document. This document(s) and/or design(s) shall not be reproduced, changed, or copied in any form or any manner, whatsoever, nor shall they be assigned to any third party without expressed written consent of CMS Architects, P.C. © 2000.

CENTREGREEN PARK AT WESTON 900 CENTREGREEN WAY CARY, NORTH CAROLINA	DENOTES CHANGES	SKL-7 PLANTING BID 1
	BUILDING 1 - LANDSCAPE PLAN (BID #1)	99-137 1/19/01

