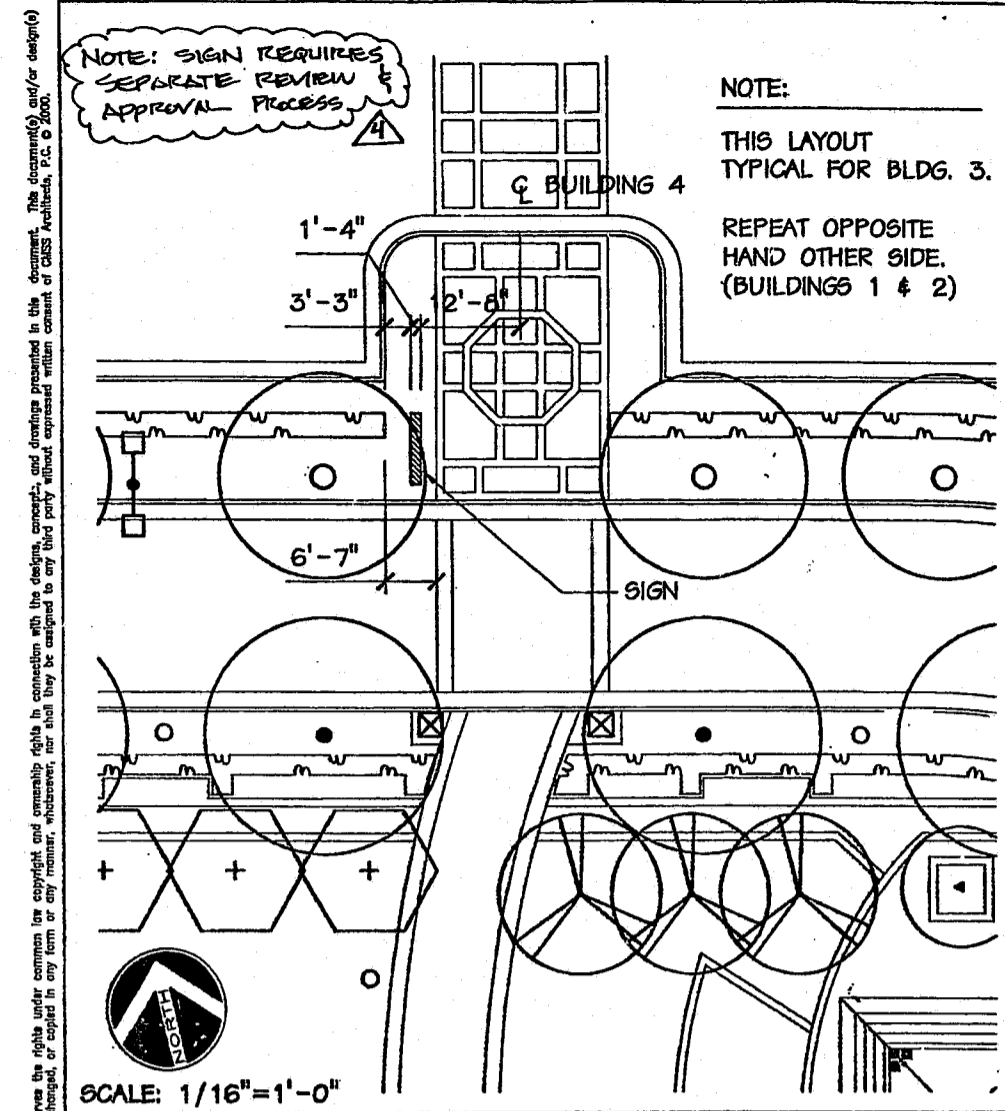


SCALE: 1/16"=1'-0"

CENTRAL PARK AT CENTREGREEN- BID #2  
CARY, NORTH CAROLINA

SKL-1  
BID #2  
99-0137  
03/16/00

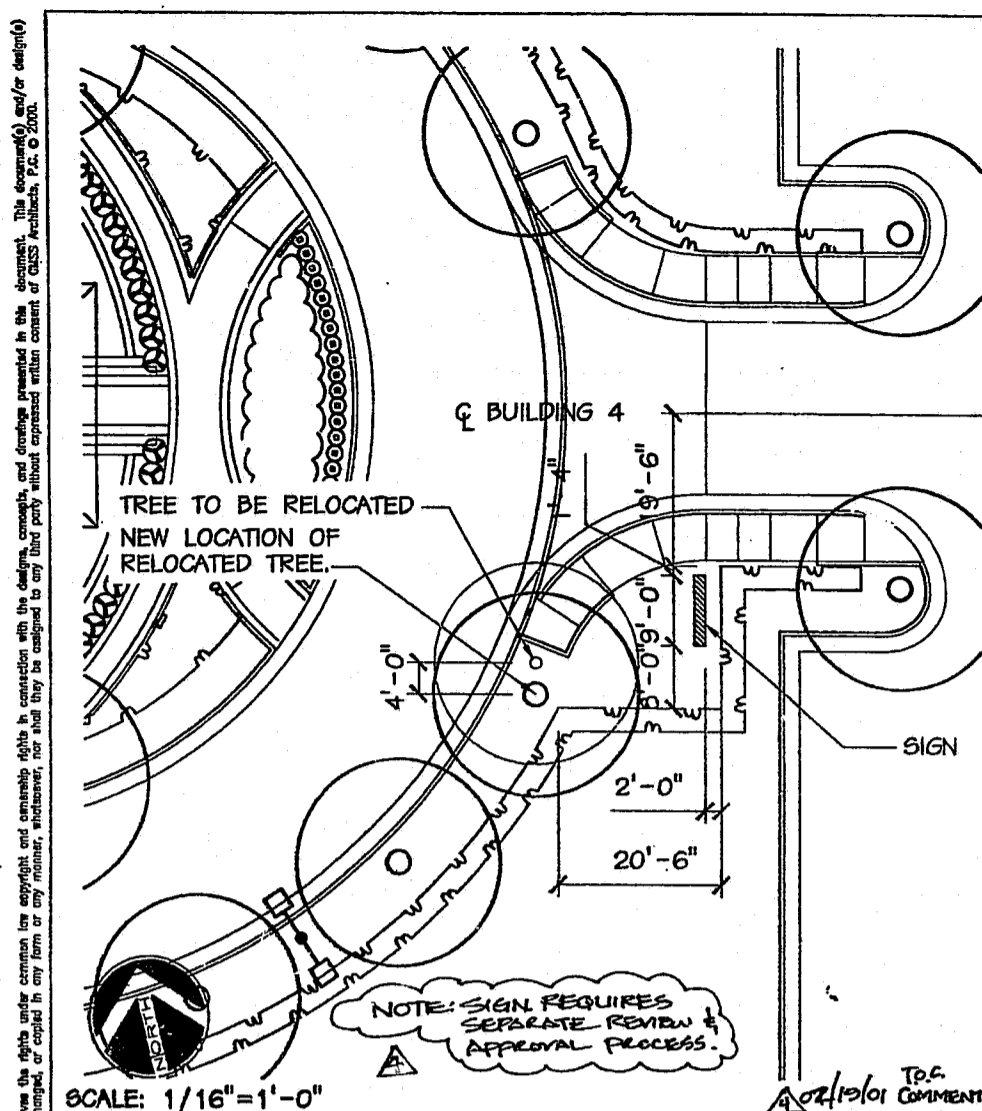
ADDITIONAL PLANTING AT FOUNTAIN PLAZA



CENTRAL PARK AT CENTREGREEN- BID #2  
CARY, NORTH CAROLINA

SKL-2  
BID #2  
99-0137  
06/26/00

REVISED HEDGE LAYOUT FOR SIGN LOCATIONS AT BUILDINGS 1 - 4



CENTRAL PARK AT CENTREGREEN- BID #2  
CARY, NORTH CAROLINA

SKL-3  
BID #2  
99-0137  
06/26/00

REVISED HEDGE LAYOUT FOR SIGN LOCATION AT BUILDING 5

PLANT SCHEDULE

KEY	BOTANICAL NAME	COMMON NAME	SIZE			QTY.	P.M.	REMARKS
			CALIPER	HEIGHT	SPREAD			
T1	ACER PACIFICUM 'BLOOD GOOD'	BLOODGOOD JAPANESE MAPLE	3"-4"	10'-12'	6'-8'	1	1	
T2	PISTACHIA CHINENSIS	CHINESE PISTACHE	4 1/2"-5"	18'-20'	---	26	1	
T3	BETULA NIGRA	RIVER BIRCH	3" MIN.	14'-18'	---	5	1	MULTISTEM
T4	NOT USED							
T5	LAGERSTROEMIA 'FAURIE'	GRAPE MYRTLE	5" MIN.	6'-10'	---	76	2	MULTISTEM
T6	QUERCUS DARLINGTONIA	LOBLOLLY PINE	4"-5"	15'-18'	8" MIN.	27	1	
T7	ZELKOVIA SERICATA 'GREEN VASE'	DARLINGTON OAK	4 1/2"-5"	18'-20'	---	33	1	
T8	ZELKOVIA SERICATA 'GREEN VASE'	GREEN VASE ZELKOVA	4 1/2"-5"	16'-18'	8" MIN.	5	1	
T9	ILEX CORNUTA 'BURFORD'	TREEFROEM BURFORD HOLLY	---	6" MIN	4" MIN	5	2	
T10	GLEDITSIA TRIACANTHOS 'INERMIS 'SHADE MASTER'	SHADE MASTER HONEY LOCUST	4 1/2"-5"	18'-20'	4" MIN	5	1	
G1	NOT USED	INDIAN HAWTHORNE	18"-24"	18"-24"	18"-24"	577	3	
G2	NOT USED	HEAVENLY BAMBOO	24"-30"	24"	24"	51	3	
G3	NOT USED							
G4	EUPHORBIA COROLLATA	EUPHORBIA	---	2 GAL. POT	---	105	3	---
G5	ILEX VOMITORIA 'NANA'	DWARF YALPON HOLLY	---	12"	15"-18"	124	3	---
G6	JUNIPERUS PROCUMBENS 'NANA'	DWARF JAPANESE JUNIPER	15"-18"	15"	---	112	3	---
G7	JUNIPERUS SCOPULORUM 'SKYROCKET'	SKYROCKET JUNIPER	---	8" MIN.	2'-3'	26	3	---
G8	LIGUSTRUM JAPONICUM	JAPANESE PRIVET	---	6"	36" MIN.	36	3	3' O.C.
G9	LIGUSTRUM LUCIDUM 'CAROLINA GLORY'	CAROLINA GLORY LIGUSTRUM	---	30"-36"	24"-30"	480	3	3' O.C.
G10	NANDINA DOMESTICA 'HARBOR DWARF'	HARBOR DWARF NANDINA	---	15"-18"	15"-18"	27	3	2' O.C.
G11	NYCTAGINIA X 'LOWBOY'	LOWBOY NYCTAGINIA	---	5"-6"	42"	2	3	---
G12	NYCTAGINIA X 'LOWBOY'	LOWBOY NYCTAGINIA	---	10"-24"	10"-24"	10	3	2' O.C.
G13	ELONOROLUS FORTUNENSIS 'EMERALD & GOLD'	EMERALD & GOLD WINTER CREEPER	---	18"-18"	18"-24"	29	3	---
G14	ILEX 'LITTLE RED'	LITTLE RED HOLLY	---	24"-30"	24"-30"	530	3	3' O.C.
G15	PLANT TYPE AS DIRECTED BY THE ARCHITECT		---	36" MIN.	24"-30"	64	4	3' O.C.
G1	LIRIOPE MUSCARI 'VARIEGATA'	VARIEGATED LIRIOPE	---	1 QT. POT	---	1166	4	1' O.C. (5 BID MIN.)
F1	ASTER X FRIKARTII 'WONDER OF STAFFA'	'WONDER OF STAFFA' ASTER	---	1 QT. POT	---	244	4	15" O.C.
F2	BEGONIA	RED LEAF BEGONIA	---	1 GAL. POT	---	1034	4	1' O.C. SPRING SEE NOTE #14
F3	COREOPSIS GRANDIFLORA 'SUNRAY'	SUNRAY COREOPSIS	---	1 QT. POT	---	82	4	15" O.C.
F4	DENDRANTHEMA RUBELLUM 'CLARA CURTIS'	RUBELLUM CRYSTANTHEMUM 'CLARA CURTIS'	---	1 QT. POT	---	130	4	15" O.C.
F5	ECHINCEA PURPUREA 'BRIGHT STAR'	BRIGHT STAR CONEFLOWER	---	1 QT. POT	---	82	4	15" O.C.
F6	PANSY	YELLOW PANSY	---	1 QT. POT	---	2244	4	8' O.C. FALL SEE NOTE # 14

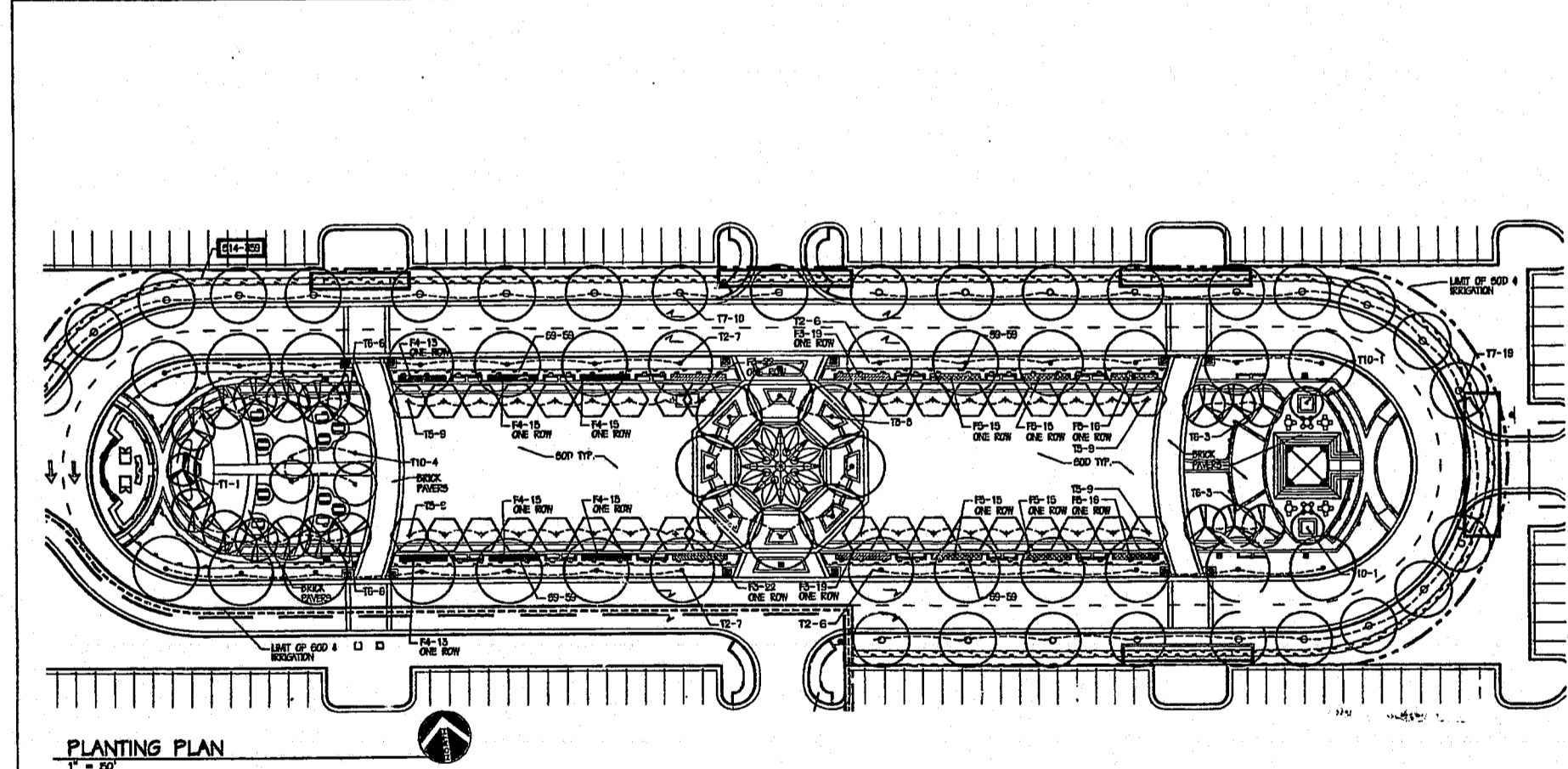
CENTREGREEN PARK AT WESTON  
900 CENTREGREEN WAY  
CARY, NORTH CAROLINA

SKL-4  
PLANTING BID 2  
99-137  
6/01/00

DEVOTES CHANGES

CENTRAL PARK - LANDSCAPE PLAN (BID #2)

SKL-4  
BID #2  
99-0137  
06/26/00



ED-SP-0100-A  
APPROVED  
BB 4/10/01  
TM 4-12-01

CENTREGREEN PARK AT WESTON  
900 CENTREGREEN WAY  
CARY, NORTH CAROLINA

SKL-5  
PLANTING BID 2  
99-137  
6/01/00

DEVOTES CHANGES

CENTRAL PARK - LANDSCAPE PLAN (BID #2)

CMS Architects, P.C. reserves the rights under common law copyright and ownership rights in connection with the design, concepts, and drawings presented in this document. This document(s) and/or design(s) shall not be reproduced, changed, or copied in any form or any manner, whatsoever, nor shall they be assigned to any third party without expressed written consent of CMS Architects, P.C. © 2000.

CMS Architects, P.C. reserves the rights under common law copyright and ownership rights in connection with the design, concepts, and drawings presented in this document. This document(s) and/or design(s) shall not be reproduced, changed, or copied in any form or any manner, whatsoever, nor shall they be assigned to any third party without expressed written consent of CMS Architects, P.C. © 2000.

PLANTING BID 2