

**PLANT SCHEDULE**

KEY	BOTANICAL NAME	COMMON NAME	SIZE			QTY.	P.M.	REMARKS
			CALIPER	HEIGHT	SPREAD			
T1	ACER RUBRUM 'OCTOBER GLORY'	OCTOBER GLORY RED MAPLE	2 1/2" - 3"	12' - 14'		1		
T2	BETULA NIGRA	RIVER BIRCH	3" AVG.	12' - 14'		2	3 STEM MIN., 5 STEM MAX.	
T3	CERIS CANADENSIS	EASTERN REDBUD	1 3/4" - 2"	8' - 10'	4' MIN.	2		
T4	CORNUS FLORIDA	WHITE FLOWERING DOGWOOD	1 3/4" - 2"	8' - 10'	4' MIN.	2		
T5	FALCATA 'PAGODIFOLIA'	CHERRYBARK OAK	3" - 3 1/2"	14' - 16'		17	1	
T6	LAGERSTROMIA FAURIEI	GRAPE MYRTLE (MULTI-STEM)	3" AVG.	10' - 12'	5' MIN.	63	2	3 STEM MIN., 5 STEM MAX.
T7	PINUS TAEDA	LOBLOLLY PINE	4" - 5"	16' - 18'	7' MIN.	16	1	
T8	QUERCUS AGUTISSIMA	SAWTOOTH OAK	2 1/2" - 3"	12' - 14'		1		
T9	QUERCUS BOREALIS	NORTHERN RED OAK	3" - 3 1/2"	14' - 16'		13	1	
T10	QUERCUS PHELLOS	WILLOW OAK	3" - 3 1/2"	14' - 16'		47	1	
T11	ULMUS PARVIFOLIA	CHINESE ELM	3" - 3 1/2"	14' - 16'		2	1	
T12	JUNIPERUS VIRGINIANA	EASTERN RED CEDAR		6' - 8'		10	2	
T13	QUERCUS DARLINGTONIA	DARLINGTON OAK	3" - 3 1/2"	14' - 16'		13	1	
S1	LIGUSTRUM LUCIDUM 'CAROLINA GLORY'	CAROLINA GLORY LIGUSTRUM		30" - 36"	24" - 30"	224	3	3' O.C.
S2	ILEX VOMITORIA 'NANA'	DWARF YAUPON HOLLY		18" - 24"	18" - 24"	52	3	3' - 0" O.C.
S3	NANDINA DOMESTICA 'HARBOR DWARF'	HARBOR DWARF NANDINA		15" - 18"	15" - 18"	246	3	2' O.C.
S4	JUNIPERUS SCOPULORUM 'SKYROCKET'	SKYROCKET JUNIPER		8' MIN.	2' - 3'	2	3	
G1	LIRIOPE MUSCARI 'VARIEGATA'	VARIEGATED LIRIOPE		1 QT. POT		426	4	1' O.C.
F1	BEGONIA	RED LEAF BEGONIA		1 GAL. POT		4	4	1' O.C. SPRING SEE NOTE #16
F2	PANSY	BLUE PANSY		1 QT. POT		4	4	6" O.C. FALL SEE NOTE #16

**GENERAL NOTES:**

- IRRIGATION CONTROLLER(S) SHALL BE PLACED ON THE DUMPSTER ENCLOSURE WALL LOCATION INDICATED ON SHEET L1.1. PROVIDE A QUAD OUTLET BOX (110 VOLTS) FOR THE IRRIGATION CONTROLLER(S) ON THE SAME WALL AS THE CONTROLLER.
- SEE DETAIL 3 ON L1.2 FOR IRRIGATION P.O.C.
- IRRIGATE ALL TREES, SHRUBS, AND TURF UP TO THE LIMIT OF IRRIGATION IN ACCORDANCE TO THE SPECIFICATIONS, UNLESS OTHERWISE NOTED. EXISTING TREES TO REMAIN AND AREAS SEEDED W / LOVEGRASS SHALL NOT BE IRRIGATED.
- CONTRACTOR SHALL REVIEW SITE LIGHTING LAYOUT WITH ARCHITECT PRIOR TO INSTALLATION OF UNDERGROUND ELECTRICAL WIRING.
- FOR SITE LIGHTING:  
A. HOLD POLE LIGHTS 3'-6" OFF CURB EXCEPT WHERE CENTERED IN ISLAND OR AS NOTED.
- EXPANSION JOINTS IN SIDEWALK TO BE LOCATED 20'-0" ON CENTER EXCEPT AS SHOWN.
- CONTROL JOINTS IN SIDEWALK TO BE LOCATED 5'-0" ON CENTER EXCEPT AS SHOWN.
- SOD ALL UNSEEDED, UNPAVED, UNMULCHED AND UNPLANTED AREAS UP TO THE LIMIT OF SOD.
- SEED ALL UNPAVED, UNMULCHED AND UNPLANTED AREAS FROM THE LIMIT OF SOD UP TO THE LIMIT OF CONSTRUCTION, EXCEPT AREAS TO RECEIVE LOVE GRASS. EXISTING TREES TO REMAIN.
- ALL SHADE TREES PLANTED ALONG THE SIDEWALKS SHALL BE PLACED A MINIMUM OF 5'-0" OFF THE EDGE OF WALK, UNLESS OTHERWISE NOTED.
- PRIOR TO CONSTRUCTION THE CONTRACTOR SHALL BE RESPONSIBLE FOR LOCATING ALL EXISTING SITE UTILITIES. ANY DAMAGE OCCURRING TO THESE UTILITIES AS A RESULT OF THE CONTRACTOR'S WORK SHALL BE REPAIRED AT THE CONTRACTOR'S EXPENSE.
- REVIEW LAYOUT OF ALL SITE FURNITURE, AND PAVEMENT PATTERNS WITH THE ARCHITECT PRIOR TO INSTALLATION.
- THE CONTRACTOR SHALL VERIFY ALL PLANT COUNTS PRIOR TO BID. ANY DISCREPANCY BETWEEN THE PLAN AND THE PLANT SCHEDULE, THE PLAN SHALL GOVERN.
- IN PLANTING BEDS ELIMINATE THE COMPACTED EARTH SAUCER AND COVER THE ENTIRE PLANTING BED WITH PINE STRAW MULCH AS SPECIFIED (3" MIN).
- CLAY SOILS SHOULD BE EXPECTED AT WESTON. SEE PLANTING METHODS ON THIS SHEET FOR PROPER PLACEMENT OF ROOTBALLS. IT SHALL BE THE RESPONSIBILITY OF THE CONTRACTOR TO CONTACT THE ARCHITECT IMMEDIATELY IF PROPER DRAINAGE FOR TREE ROOTBALLS CAN NOT BE ACHIEVED BY THE PLANTING DETAILS SHOWN.
- CONTRACTOR SHALL PROVIDE 3'-6" SEPARATION MINIMUM BETWEEN PARKING SPACES AND TREES TO ALLOW FOR VEHICLE OVERHANG.
- IN BUFFER AREAS WHERE EXISTING TREES ARE TO REMAIN UNDISTURBED REMOVE ALL DEAD, DISEASED, FALLEN AND LEANING TREES AND ALL UNDERBRUSH 1" IN CALIPER AND BELOW AND PROVIDE 4" OF PINE STRAW MULCH OVER ENTIRE AREA.
- THE TOWN OF CARY SITE INSPECTOR RESERVES THE RIGHT TO REQUIRE SUPPLEMENTAL BUFFER PLANTING IN ADDITION TO THAT WHICH IS SHOWN ON THE PLANTING PLAN BASED ON ACTUAL FIELD CONDITIONS AFTER GRADING WORK IS COMPLETED.
- ALL TRANSFORMERS SHALL BE SCREENED FROM OFF-SITE VIEWS.
- THE CONTRACTOR SHALL PROVIDE CONNECTION TO THE 1-1/2" IN. WATER SERVICE LINE PROVIDED BY ANOTHER CONTRACTOR AND SHALL PROVIDE THE METER BOX, VALVE AND WATER SERVICE LINE IN ACCORDANCE WITH STATE AND TOWN OF CARY REQUIREMENTS. THE CONTRACTOR SHALL SIZE THE WATER METER AND SHALL PAY TOWN OF CARY WATER METER FEES. FOR BIDDING PURPOSES, ASSUME A 1-1/2" IN. WATER METER SIZE. THE CONTRACTOR SHALL ALSO PROVIDE ALL PIPING, VALVES, BACKFLOW PREVENTER, PRESSURE REDUCING VALVE (REQUIRED), HOT BOX INSTALLATION (INCLUDING PROPERLY SIZED HOT BOX) AND CONNECTIONS BETWEEN THE WATER METER AND THE IRRIGATION SYSTEM.



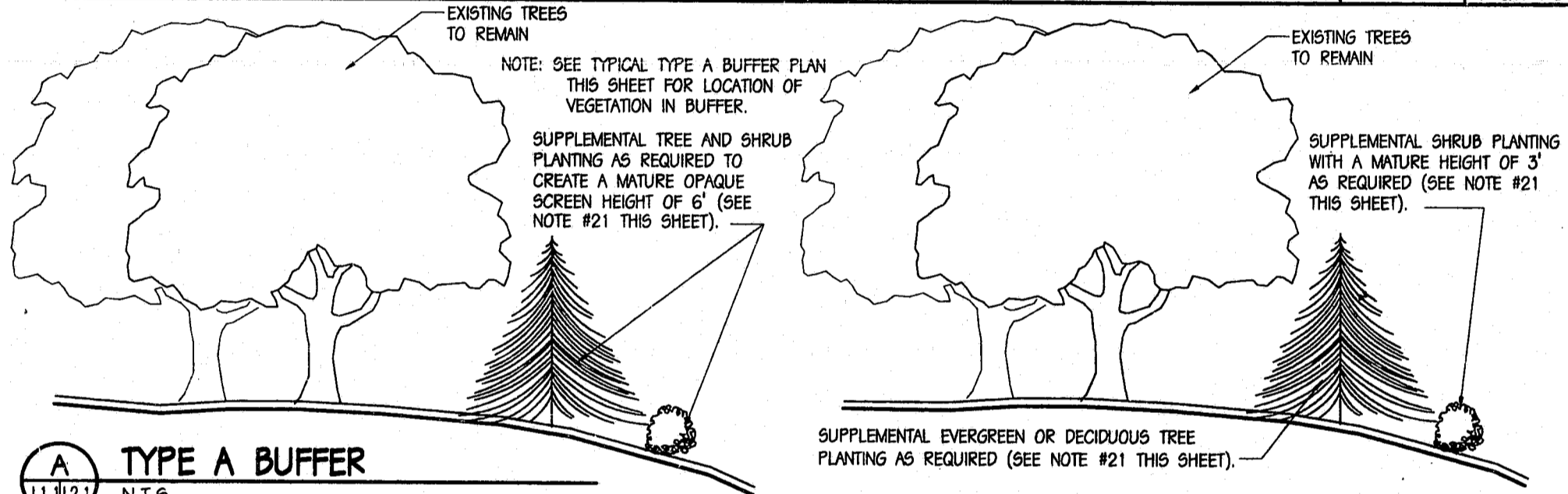
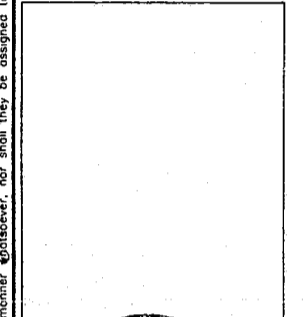
SITE 300  
5041 CORPORATE WOODS DRIVE  
VIRGINIA BEACH, VIRGINIA 23462  
(757) 222-2010

DES. MLJ DR. PW CHK. JJC

DATE MARCH 8, 2000

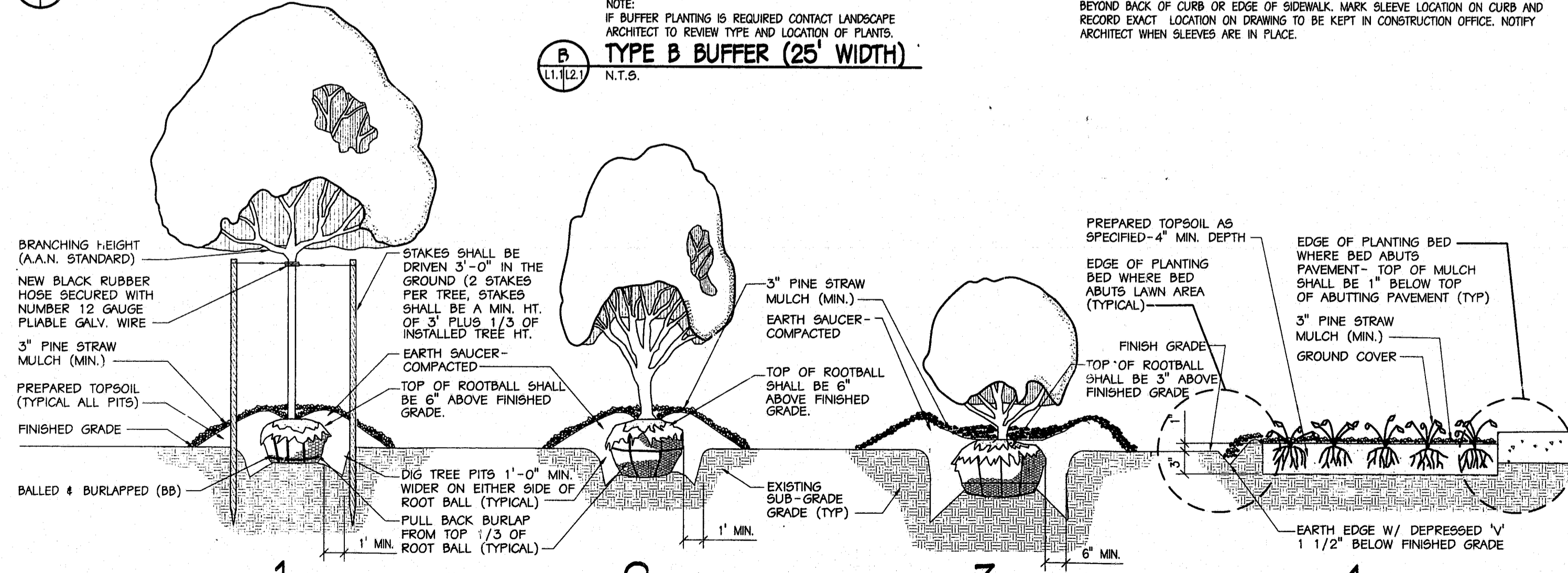
REVISIONS

NO.	DESCRIPTION

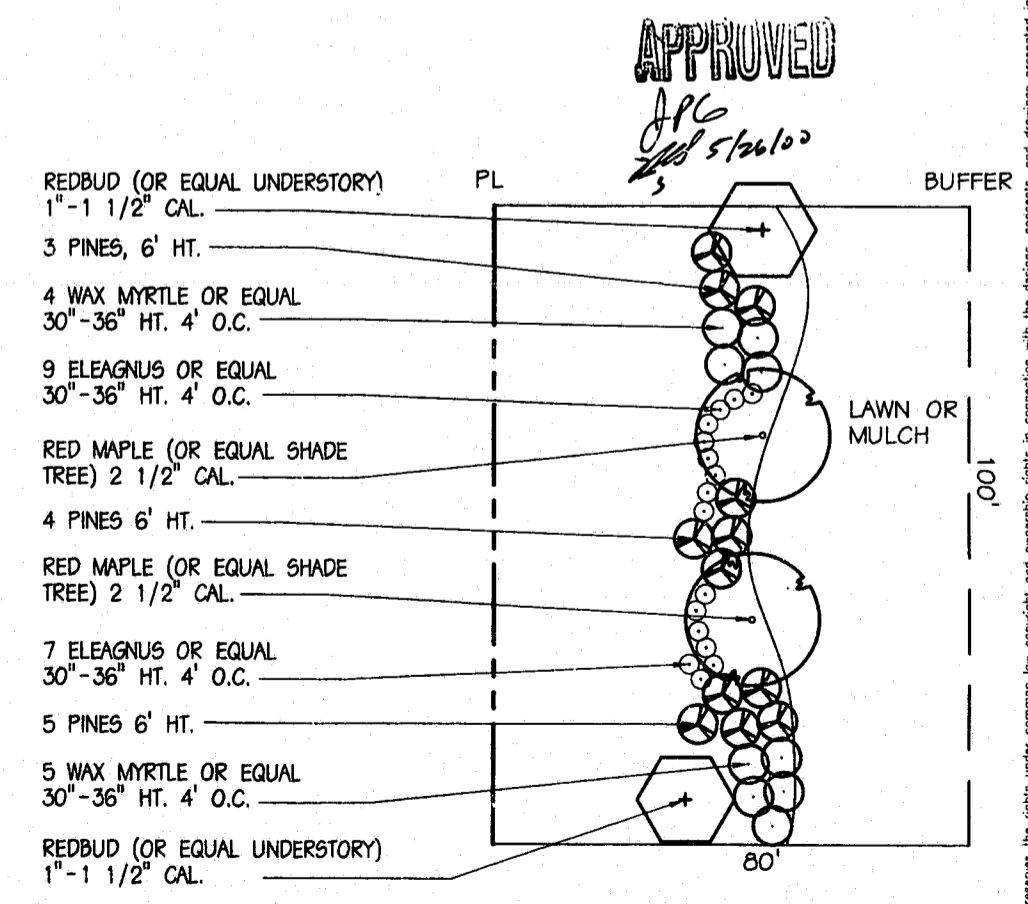


**GENERAL NOTES:**

- ENTRANCE PLAZAS SHALL BE STAKED OUT IN THE FIELD AND REVIEWED BY THE ARCHITECT PRIOR TO CONSTRUCTION.
- IRRIGATION CONTRACTOR SHALL APPROVE IRRIGATION SLEEVE LOCATIONS PRIOR TO SLEEVE INSTALLATION. IT SHALL BE THE RESPONSIBILITY OF THE GENERAL CONTRACTOR TO COORDINATE ALL IMPACTING TRADES.
- IRRIGATION SLEEVES SHALL BE 4" DIA. SCHEDULE 40 PVC. PLACE AS SHOWN A MINIMUM OF 18" TO A MAXIMUM OF 24" BELOW TOP OF CURB OR SIDEWALK. EXTEND SLEEVE 12" BEYOND BACK OF CURB OR EDGE OF SIDEWALK. MARK SLEEVE LOCATION ON CURB AND RECORD EXACT LOCATION ON DRAWING TO BE KEPT IN CONSTRUCTION OFFICE. NOTIFY ARCHITECT WHEN SLEEVES ARE IN PLACE.



**PLANTING METHODS (P.M.)**  
1 APPLIES TO ALL TREES EXCEPT T4.  
2 APPLIES TO T4  
3 APPLIES TO ALL SHRUBS  
4 APPLIES TO GROUND COVER AND FLOWERS  
NOT TO SCALE



**TYPICAL TYPE A BUFFER PLAN**  
NOT TO SCALE

**CENTREGREEN PARK AT WESTON**  
 CARY, NORTH CAROLINA  
**900 CENTREGREEN WAY**  
**PLANTING METHODS**

PROJECT NO. 99-137

**L2.1**

PLANTING BID #1

SHEET OF