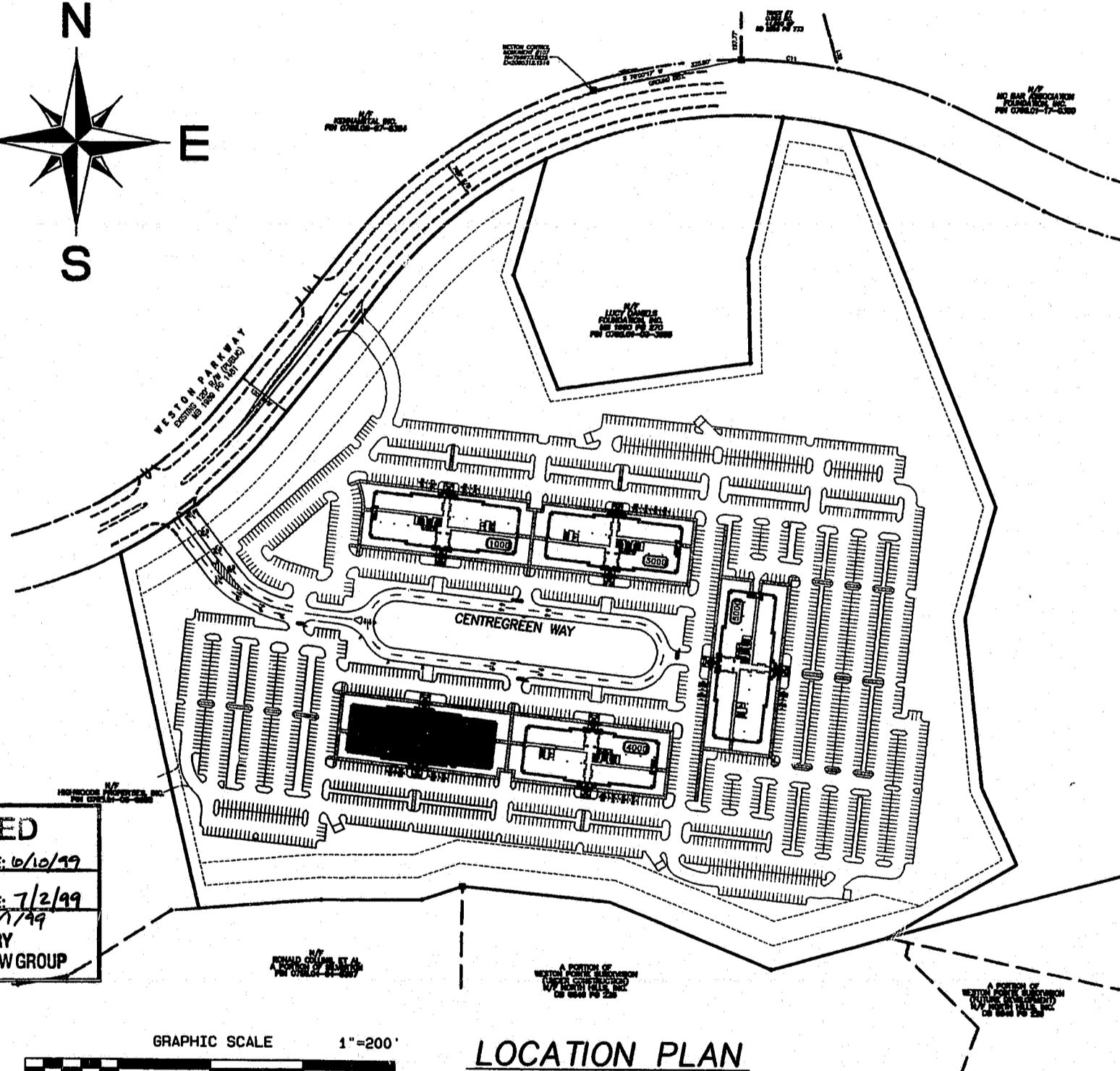
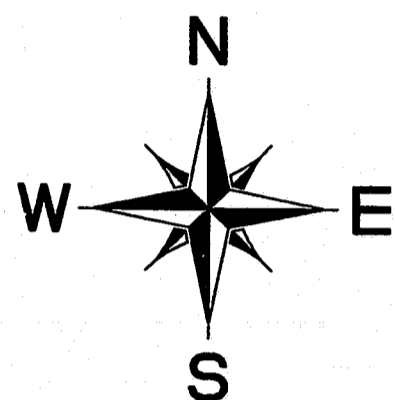
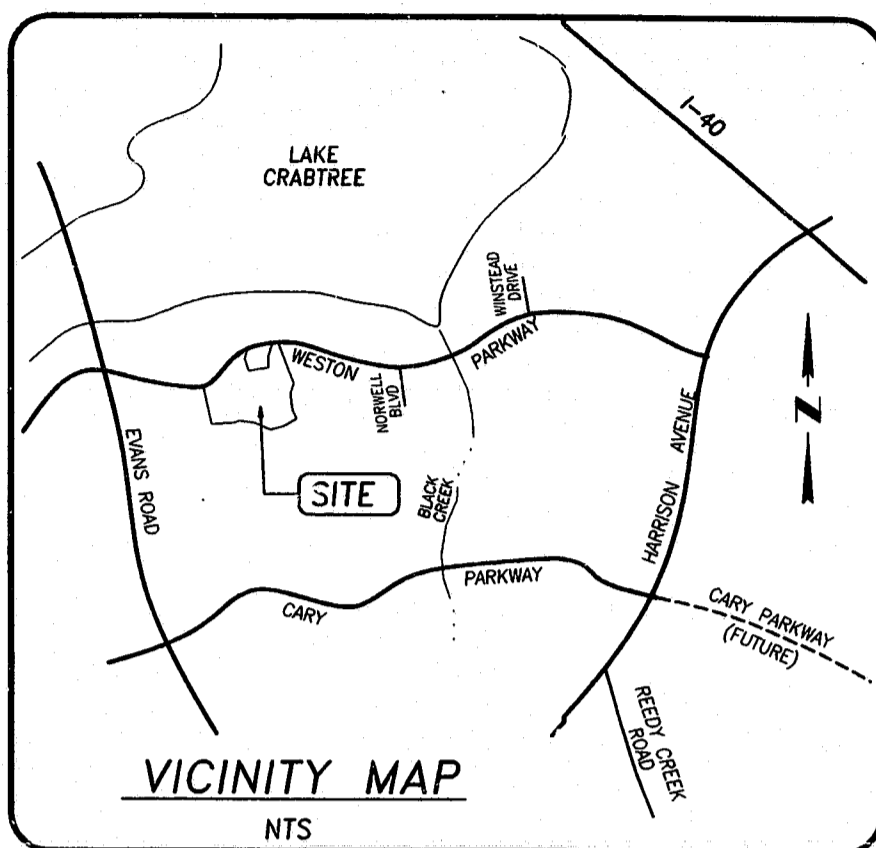


# CONSTRUCTION PLANS FOR

# CENTREGREEN PARK AT WESTON

(FORMERLY WESTON COMMONS TRACT 6A)

## CARY, NORTH CAROLINA



INDEX OF SHEETS	
	SHT NUMBER
OVERALL SITE PLAN	SHT 1
DETAILED SITE PLAN	SHT 2A
DETAILED SITE PLAN	SHT 2B
UTILITY, GRADING, STORM DRAINAGE, & EROSION CONTROL PLAN	SHT 3A
UTILITY PLAN - SHEET 1	SHT 3AA
UTILITY, GRADING, STORM DRAINAGE, & EROSION CONTROL PLAN	SHT 3B
UTILITY PLAN - SHEET 2	SHT 3BB
PLANTING PLAN	SHT L1.1
PLANTING PLAN	SHT L1.2
PLANTING METHODS	SHT L2.1
DETAILS	SHT L2.2
LIGHTING PLAN	SHT 5
UTILITY PROFILES	SHT 6A
UTILITY PROFILES	SHT 6B
UTILITY DETAILS	SHT 7
STORM DRAINAGE & EROSION CONTROL DETAILS	SHT 8
PAVEMENT DETAILS	SHT 9
NOTES & DETAILS	SHT 10
WESTON PARKWAY MEDIAN IMPROVEMENTS	SHT R-1
FIRST FLOOR PLAN ELEVATIONS	SHT A1.1
SITE ELECTRICAL PLANS	SHT SE1

LEGEND		
DESCRIPTION	EXISTING	PROPOSED
2' CONTOUR INTERVAL	---	---
10' CONTOUR INTERVAL	---	---
PROPERTY LINE	---	---
ROADWAY CENTERLINE	---	---
RIGHT OF WAY LIMITS	---	---
EASEMENT LINE	---	---
CURB & GUTTER	---	---
SANITARY SEWER FACILITIES	—S—	—S—
STORM SEWER FACILITIES	—S—	—S—
WATERLINE	—W—	—W—
FIRE HYDRANT ASSEMBLY	—FH—	—FH—
FENCING STRUCTURE	—F—	—F—
WOODSLINE	—W—	N/A
WATERWAYS	—W—	N/A
SILT FENCING	N/A	—X—

99-SP-078  
**APPROVED**  
 BY: *DRC* DATE: 6/10/99  
 BY: *TM* DATE: 7/2/99  
 TOWN OF CARY  
 DEVELOPMENT REVIEW GROUP  
 REVISED PLANS

**OWNER**

HIGHWOODS PROPERTIES, INC.  
 3100 SMOKETREE COURT  
 SUITE 600  
 RALEIGH, N.C. 27604  
 919-872-4924

**ARCHITECT**

CMSS ARCHITECTS  
 5041 CORPORATE WOODS DRIVE  
 SUITE 200  
 VIRGINIA BEACH, VA. 23462  
 757-497-5060

**PREPARED BY:**

**WITHERS & RAVENEL**  
 ENGINEERING & SURVEYING, INC.

111 MACKENAN DRIVE  
 CARY, NORTH CAROLINA 27511  
 TELEPHONE: OFFICE (919) 467-8340  
 FAX No. (919) 467-8308

NOTE:  
 CLOUDED AREA DENOTES REVISIONS  
 1. REVISE SHEET INDEX  
 2. REVISE TOC PROJECT #

TOWN OF CARY PROJECT NO. 99-SP-078

REVISIONS		
NUMBER	DESCRIPTION	DATE
1	PER T.O.C. FIRST REVIEW	5/28/98
2	PER T.O.C. SECOND REVIEW	6/23/98
3	PER T.O.C. THIRD REVIEW	7/27/98
4	ADDENDUM #1 REVISIONS	8/14/98
5	ADDENDUM #2 REVISIONS	2/17/99
6	ADDENDUM #3 REVISIONS	4/1/99
7	RESUBMITTAL TO TOWN OF CARY FOR APPROVAL	4/12/99
8	PER T.O.C. FIRST RE-REVIEW	5/10/99

K:\CADD\99-SP-078\plan\99-SP-078.dwg Mon May 31 11:52:22AM WITHERS & RAVENEL ENGINEERING & SURVEYING