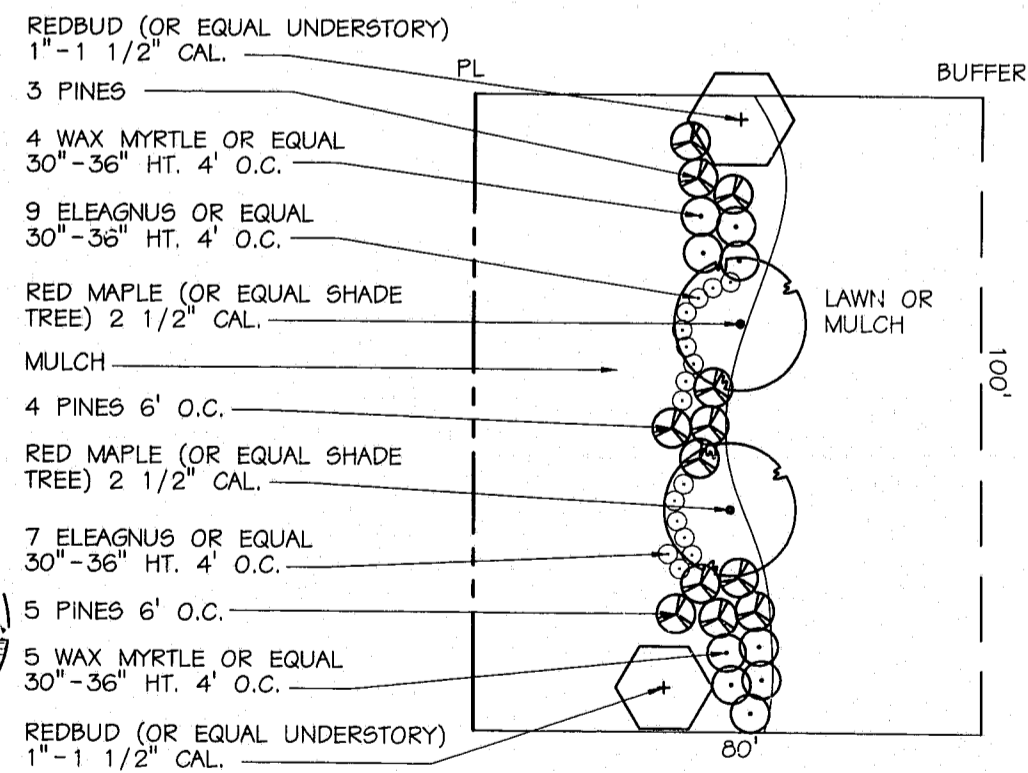
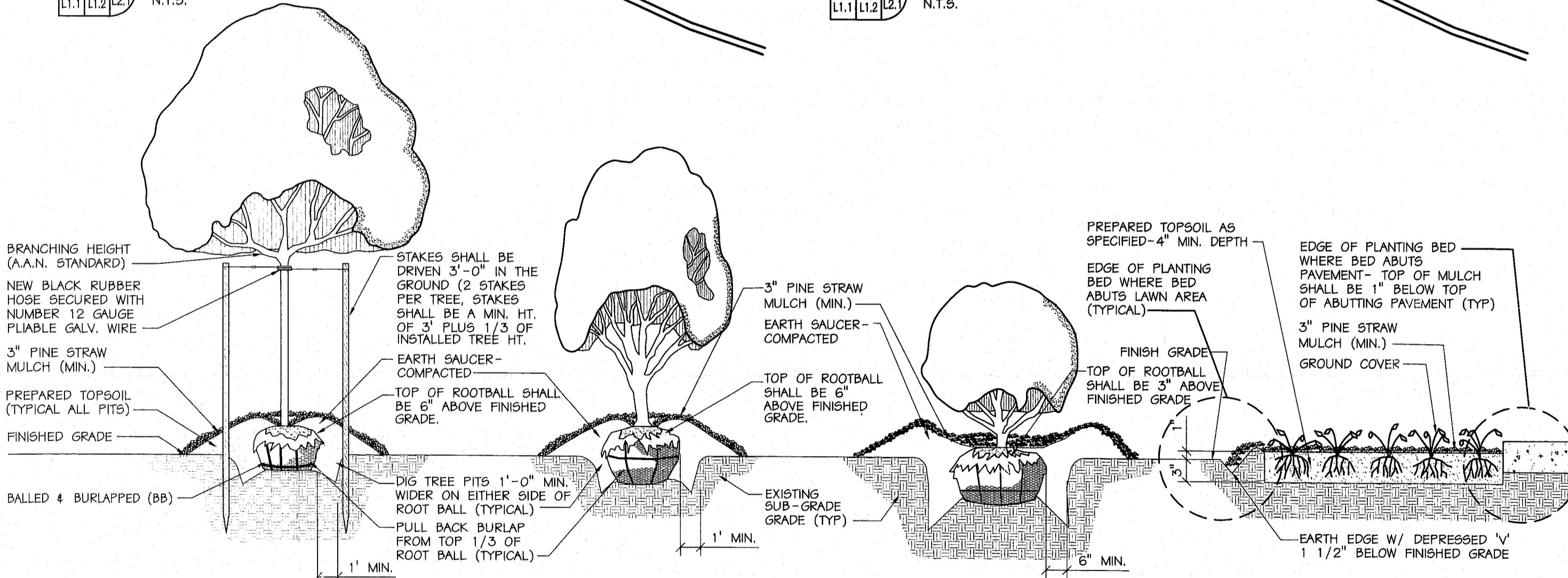
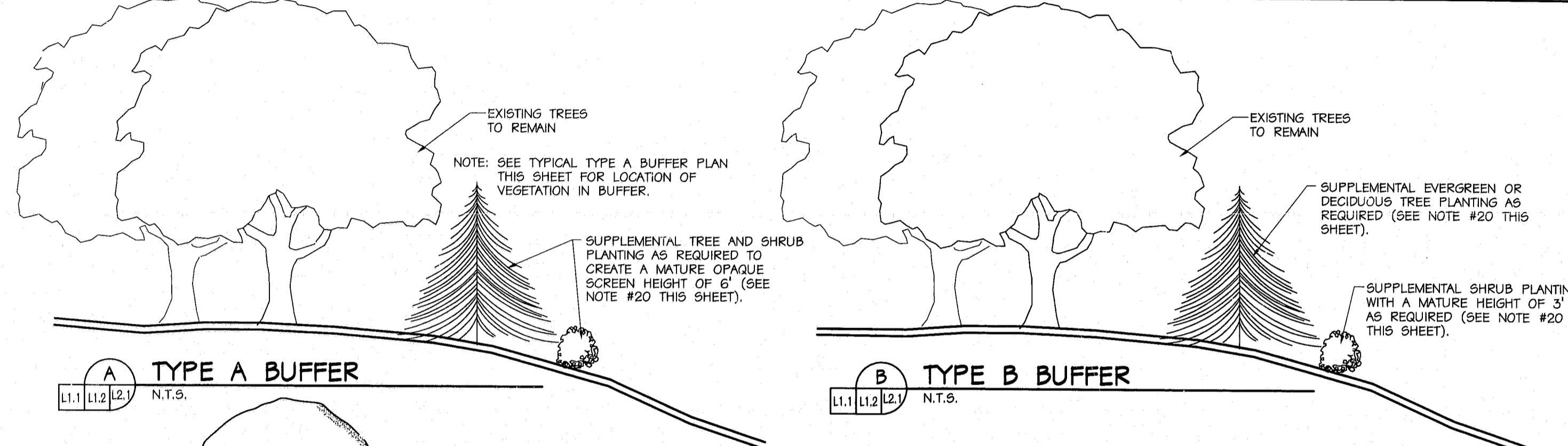


# PLANT SCHEDULE

KEY	BOTANICAL NAME	COMMON NAME	SIZE			QTY.	P.M.	REMARKS
			CALIPER	HEIGHT	SPREAD			
T1	ACER RUBRUM 'OCTOBER GLORY'	OCTOBER GLORY RED MAPLE	2 1/2" - 3"	12' - 14'	---	26	1	
T2	BETULA NIGRA	RIVER BIRCH	3" AVG.	12' - 14'	---	6	2	3 STEM MIN., 5 STEM MAX.
T3	CERCIS CANADENSIS	EASTERN REDBUD	1 3/4" - 2"	8' - 10'	---	9	2	
T4	CORNUS FLORIDA	WHITE FLOWERING DOGWOOD	1 3/4" - 2"	8' - 10'	---	---	2	
T5	FALCATA "PAGODIFOLIA"	CHERRYBARK OAK	2 1/2" - 3"	12' - 14'	---	13	1	
T6	LAGERSTROMIA INDICA 'RUBRA'	RED GRAPE MYRTLE (MULTI-STEM)	3" AVG.	10' - 12'	---	94	2	3 STEM MIN., 5 STEM MAX.
T7	PINUS TAEDA	LOBLOLLY PINE	2 1/2" - 3"	12' - 14'	---	83	1	
T8	QUERCUS ACUTISSIMA	SAWTOOTH OAK	2 1/2" - 3"	12' - 14'	---	---	1	
T9	QUERCUS BOREALIS	NORTHERN RED OAK	2 1/2" - 3"	12' - 14'	---	15	1	
T10	QUERCUS PHELLOS	WILLOW OAK	2 1/2" - 3"	12' - 14'	---	41	1	
T11	ULMUS PARVIFOLIA	CHINESE ELM	2 1/2" - 3"	12' - 14'	---	2	1	
T12	JUNIPERUS VIRGINIANA	EASTERN RED CEDAR	---	6' - 8'	---	10	2	
T13	QUERCUS PHELLOS	WILLOW OAK	3 1/2" - 4"	14' - 16'	---	12	1	
G1	LIGUSTRUM LUCIDUM 'CAROLINA GLORY'	CAROLINA GLORY LIGUSTRUM	---	24" - 30"	24" - 30"	675	3	3' O.C.
G2	ILEX CRENATA 'HELLERI'	HELLERI JAPANESE HOLLY	---	18" - 24"	18" - 24"	---	3	30" O.C.
G3	NANDINA DOMESTICA 'HARBOR DWARF'	HARBOR DWARF NANDINA	---	15" - 18"	15" - 18"	---	3	2' O.C.
F1	BEGONIA	RED LEAF BEGONIA	1 QT. POT	---	---	---	4	1' O.C.
F2	PANSY	BLUE PANSY	1 GAL. POT	---	---	---	4	1' O.C. SPRING
			1 QT. POT	---	---	---	4	6" O.C. FALL

## GENERAL NOTES:

- ENTRANCE PLAZAS SHALL BE STAKED OUT IN THE FIELD AND REVIEWED BY THE ARCHITECT PRIOR TO CONSTRUCTION.
- IRRIGATION CONTRACTOR SHALL APPROVE IRRIGATION SLEEVE LOCATIONS PRIOR TO SLEEVE INSTALLATION. IT SHALL BE THE RESPONSIBILITY OF THE GENERAL CONTRACTOR TO COORDINATE ALL IMPACTING TRADES.
- IRRIGATION SLEEVES SHALL BE 4" DIA. SCHEDULE 40 PVC. PLACE AS SHOWN A MINIMUM OF 18" TO A MAXIMUM OF 24" BELOW TOP OF CURB OR SIDEWALK. EXTEND SLEEVE 12" BEYOND BACK OF CURB OR EDGE OF SIDEWALK. MARK SLEEVE LOCATION ON CURB AND RECORD EXACT LOCATION ON DRAWING TO BE KEPT IN CONSTRUCTION OFFICE. NOTIFY ARCHITECT WHEN SLEEVES ARE IN PLACE.
- IRRIGATION CONTROLLER(S) SHALL BE PLACED OUTSIDE OF THE BUILDING. SUBMIT SHOP DRAWING FOR EXACT LOCATION. PROVIDE A QUAD OUTLET BOX (110 VOLTS) FOR THE IRRIGATION CONTROLLER(S).
- IRRIGATE ALL TREES, SHRUBS, AND TURF UP TO THE LIMIT OF IRRIGATION IN ACCORDANCE TO THE SPECIFICATIONS, UNLESS OTHERWISE NOTED. EXISTING TREES TO REMAIN SHALL NOT BE IRRIGATED.
- CONTRACTOR SHALL REVIEW SITE LIGHTING LAYOUT WITH ARCHITECT PRIOR TO INSTALLATION OF UNDERGROUND ELECTRICAL WIRING.
- FOR SITE LIGHTING:
  - HOLD POLE LIGHTS 3'-6" OFF CURB EXCEPT WHERE CENTERED IN ISLAND OR AS NOTED.
- EXPANSION JOINTS IN SIDEWALK TO BE LOCATED 20'-0" ON CENTER EXCEPT AS SHOWN.
- CONTROL JOINTS IN SIDEWALK TO BE LOCATED 5'-0" ON CENTER EXCEPT AS SHOWN.
- SEED ALL UNPAVED, UNMULCHED AND UNPLANTED AREAS UP TO THE LIMIT OF CONSTRUCTION, EXCEPT AREAS TO RECEIVE LOVE GRASS.
- ALL SHADE TREES PLANTED ALONG THE SIDEWALKS SHALL BE PLACED A MINIMUM OF 5'-0" OFF THE EDGE OF WALK.
- PRIOR TO CONSTRUCTION THE CONTRACTOR SHALL BE RESPONSIBLE FOR LOCATING ALL EXISTING SITE UTILITIES. ANY DAMAGE OCCURRING TO THESE UTILITIES AS A RESULT OF THE CONTRACTOR'S WORK SHALL BE REPAIRED AT THE CONTRACTOR'S EXPENSE.
- ALL PLANTING BEDS: AMEND EXISTING SOIL PER SPECIFICATIONS AND ROTOTILL TO A DEPTH OF 18".
- REVIEW LAYOUT OF ALL SITE FURNITURE, AND PAVEMENT PATTERNS WITH THE ARCHITECT PRIOR TO INSTALLATION.
- THE CONTRACTOR SHALL VERIFY ALL PLANT COUNTS PRIOR TO BID.
- IN PLANTING BEDS ELIMINATE THE COMPACTED EARTH SAUCER AND COVER THE ENTIRE PLANTING BED WITH PINE STRAW MULCH AS SPECIFIED (3" MIN).
- CLAY SOILS SHOULD BE EXPECTED AT WESTON. SEE PLANTING METHODS ON THIS SHEET FOR PROPER PLACEMENT OF ROOTBALLS. IT SHALL BE THE RESPONSIBILITY OF THE CONTRACTOR TO CONTACT THE ARCHITECT IMMEDIATELY IF PROPER DRAINAGE FOR TREE ROOTBALLS CAN NOT BE ACHIEVED BY THE PLANTING DETAILS SHOWN.
- CONTRACTOR SHALL PROVIDE 3'-6" SEPARATION MINIMUM BETWEEN PARKING SPACES AND TREES TO ALLOW FOR VEHICLE OVERHANG.
- IN 50' BUFFER AREA ALONG WESTON PARKWAY WHERE EXISTING TREES ARE TO REMAIN UNDISTURBED REMOVE ALL DEAD, DISEASED, FALLEN AND LEANING TREES AND ALL UNDERBRUSH 1" IN CALIPER AND BELOW AND PROVIDE 4" OF PINE STRAW MULCH OVER ENTIRE AREA.
- THE TOWN OF CARY SITE INSPECTOR RESERVES THE RIGHT TO REQUIRE SUPPLEMENTAL BUFFER PLANTING IN ADDITION TO THAT WHICH IS SHOWN ON THE PLANTING PLAN BASED ON ACTUAL FIELD CONDITIONS AFTER GRADING WORK IS COMPLETED.
- ALL TRANSFORMERS SHALL BE SCREENED FROM OFF-SITE VIEWS.



- APPLIES TO ALL TREES EXCEPT T4.
- APPLIES TO T4
- APPLIES TO ALL SHRUBS
- APPLIES TO GROUND COVER AND FLOWERS

## PLANTING METHODS (P.M.)

99-SP-078  
APPROVED  
7/1/99  
TM 7/2/99

## TYPICAL TYPE A BUFFER PLAN

NOT TO SCALE

NOT TO SCALE



SUITE 200  
4041 CORPORATE WOODS DRIVE  
VIRGINIA BEACH, VIRGINIA 23462  
(757) 497-5060

DES. KBH DR. CJB CHK. JJC

DATE APRIL 29, 1998

REVISIONS	
1	5/26/98
2	9/4/98 PHASE I
3	9/17/98 ENTRY PLAZA LANDSCAPING SCREEN WALLS

4	4/9/99 PLANT COUNTS
5	05/05/99 TOWN COMMENTS

WESTON FIVE OFFICE COMPLEX  
BUILDING 1  
NORTH CAROLINA  
CARY

PROJECT NO. 97076

L2.1  
99-SP-078

SHEET OF