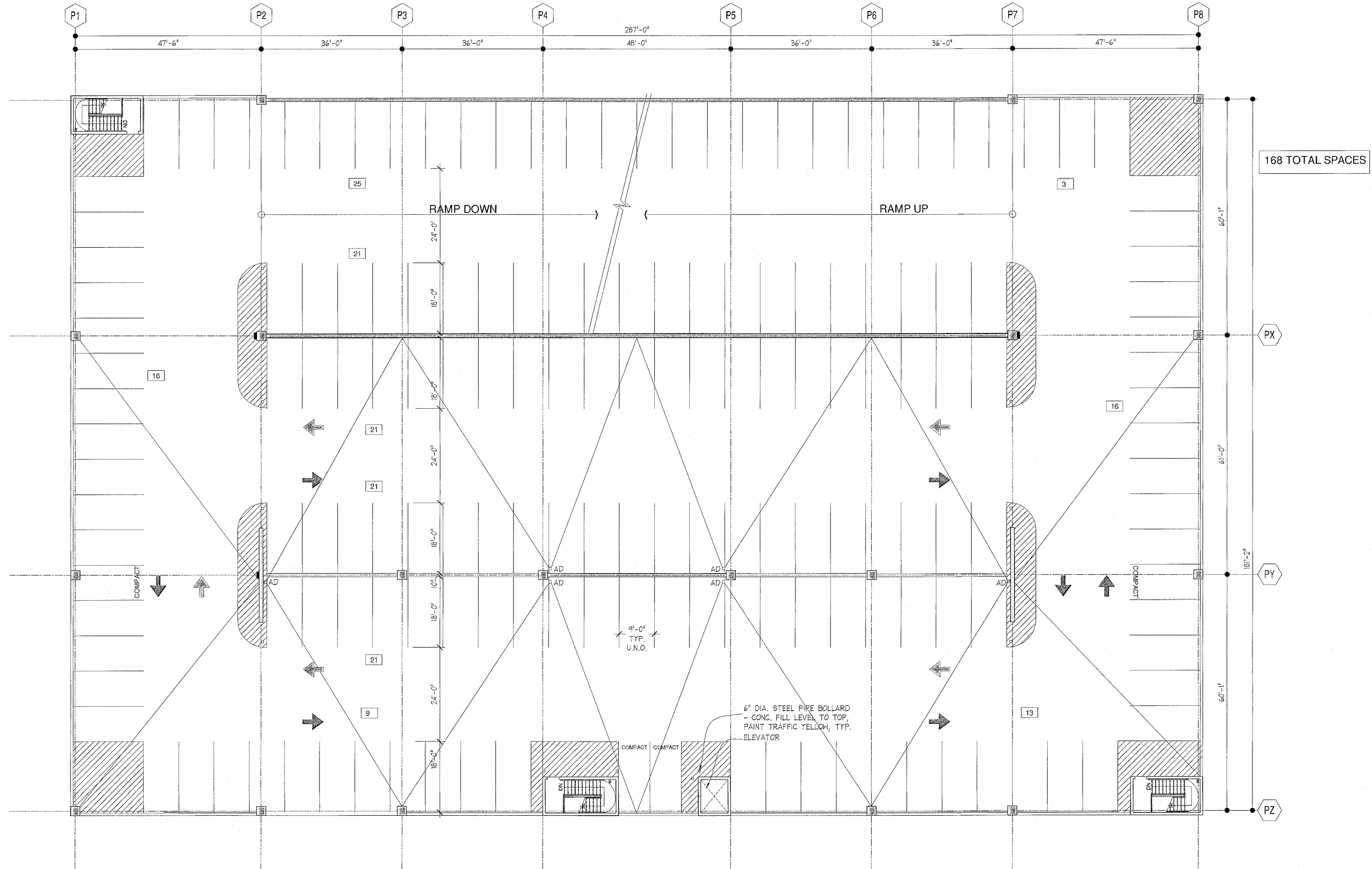


**RULE JOY TRAMMELL RUBIO**  
 ARCHITECTURE INTERIOR DESIGN  
 300 Galleria Parkway Suite 740 Atlanta, Georgia 30339  
 770-661-1492 (phone) 770-661-1493 (fax)  
 www.rjtrdesign.com

DATE PLOTTED: 08/11/16 10:58 AM PROJECT: 16-SP-049 DRAWING: 16-SP-049-03

PRINTED  
 DATE ISSUE/REVISION  
 08/11/16 DEV. REVIEW COMMENTS



168 TOTAL SPACES

**1 PARKING LEVEL 3**  
 Scale: 3/32" = 1'-0" NOT TO SCALE. REFER TO BUILDING PERMIT DRAWING SET.

16-SP-049  
 HTE #: 17-0052  
 Approved by the Town of Cary  
 Development Review Committee

Planner: VAH Date: 21 Sep 2016

PARKING DECK LEVEL 3 PLAN  
**CENTREGREEN THREE PARKING DECK**  
 5025 CENTREGREEN WAY  
 CARY, NORTH CAROLINA

COMMISSION NO: 14-078.00

DRAWING NO:

AP1-03-3