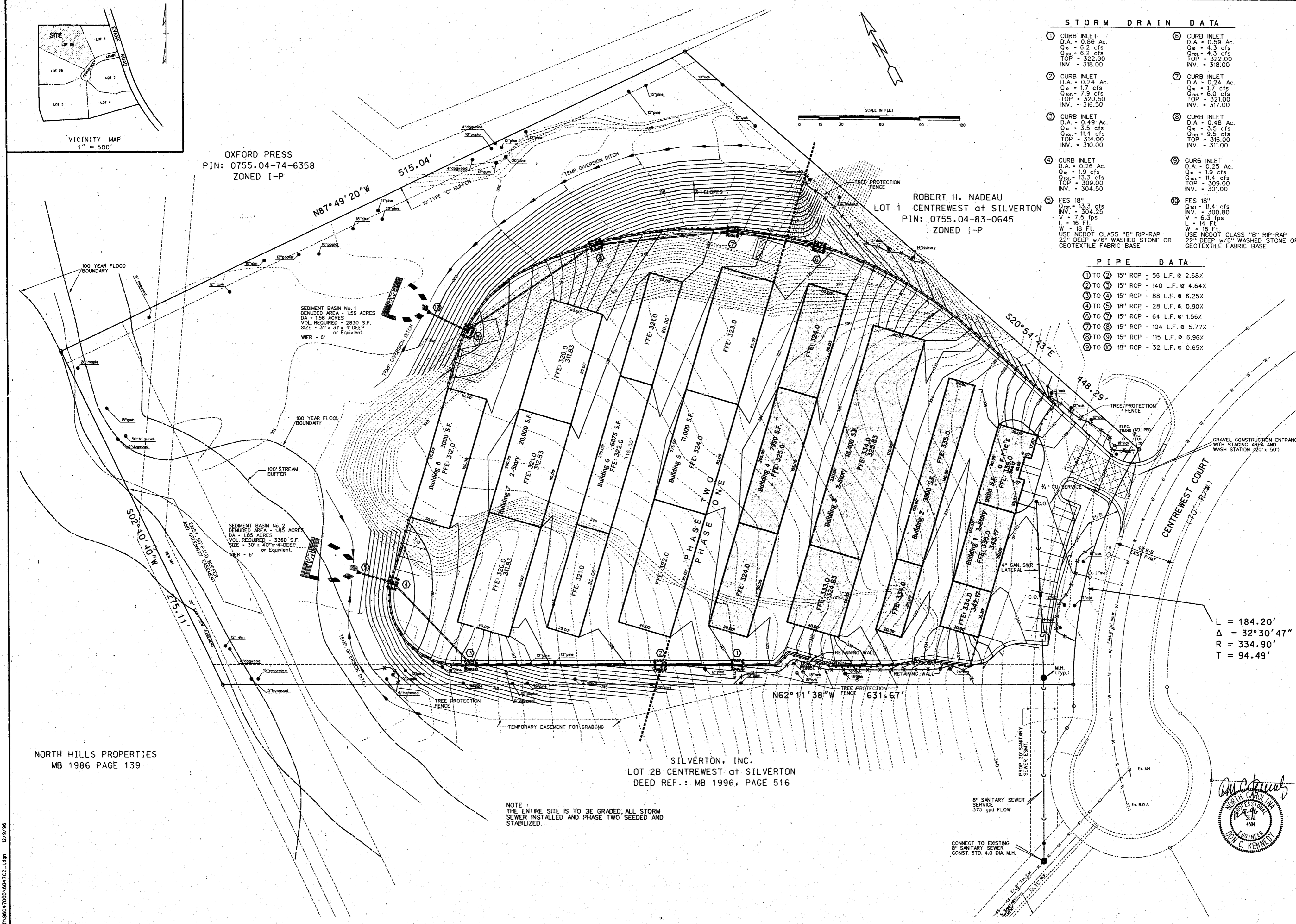


OXFORD PRESS  
PIN: 0755.04-74-6358  
ZONED I-P

ROBERT H. NADEAU  
LOT 1 CENTREWEST at SILVERTON  
PIN: 0755.04-83-0645  
ZONED I-P

STORM DRAIN DATA	
① CURB INLET D.A. - 0.86 Ac. Q <sub>max</sub> - 6.2 cfs Q <sub>min</sub> - 4.3 cfs TOP - 322.00 INV. - 318.00	⑥ CURB INLET D.A. - 0.59 Ac. Q <sub>max</sub> - 4.3 cfs Q <sub>min</sub> - 3.2 cfs TOP - 322.00 INV. - 318.00
② CURB INLET D.A. - 0.24 Ac. Q <sub>max</sub> - 1.7 cfs Q <sub>min</sub> - 0.9 cfs TOP - 320.50 INV. - 316.50	⑦ CURB INLET D.A. - 0.24 Ac. Q <sub>max</sub> - 1.7 cfs Q <sub>min</sub> - 0.9 cfs TOP - 321.00 INV. - 317.00
③ CURB INLET D.A. - 0.49 Ac. Q <sub>max</sub> - 3.5 cfs Q <sub>min</sub> - 1.4 cfs TOP - 314.00 INV. - 310.00	⑧ CURB INLET D.A. - 0.48 Ac. Q <sub>max</sub> - 3.5 cfs Q <sub>min</sub> - 1.4 cfs TOP - 309.00 INV. - 311.00
④ CURB INLET D.A. - 0.26 Ac. Q <sub>max</sub> - 1.9 cfs Q <sub>min</sub> - 1.3 cfs TOP - 309.00 INV. - 304.50	⑨ CURB INLET D.A. - 0.25 Ac. Q <sub>max</sub> - 1.9 cfs Q <sub>min</sub> - 1.4 cfs TOP - 309.00 INV. - 301.00
⑤ FES 18" Q <sub>tot</sub> - 13.3 cfs Q <sub>min</sub> - 304.25 V - 7.5 fps L - 16 Ft. W - 18 Ft. USE NODOT CLASS "B" RIP-RAP 22" DEEP w/6" WASHED STONE OR GEOTEXTILE FABRIC BASE	⑩ FES 18" Q <sub>tot</sub> - 11.4 cfs Q <sub>min</sub> - 300.80 V - 6.3 fps L - 16 Ft. W - 16 Ft. USE NODOT CLASS "B" RIP-RAP 22" DEEP w/6" WASHED STONE OR GEOTEXTILE FABRIC BASE

PIPE DATA	
① TO ②	15" RCP - 56 L.F. @ 2.68%
② TO ③	15" RCP - 140 L.F. @ 4.64%
③ TO ④	15" RCP - 88 L.F. @ 6.25%
④ TO ⑤	18" RCP - 28 L.F. @ 0.90%
⑤ TO ⑥	15" RCP - 64 L.F. @ 1.56%
⑥ TO ⑦	15" RCP - 104 L.F. @ 5.77%
⑦ TO ⑧	15" RCP - 115 L.F. @ 6.96%
⑧ TO ⑩	18" RCP - 32 L.F. @ 0.65%



L = 184.20'  
Δ = 32° 30' 47"  
R = 334.90'  
T = 94.49'

SILVERTON, INC.  
LOT 2B CENTREWEST at SILVERTON  
DEED REF.: MB 1996, PAGE 516

NOTE:  
THE ENTIRE SITE IS TO BE GRADED, ALL STORM SEWER INSTALLED AND PHASE TWO SEEDED AND STABILIZED.

NORTH HILLS PROPERTIES  
MB 1986 PAGE 139

**BNK**

BASS, NIXON, & KENNEDY, INC., CONSULTING ENGINEERS  
919-851-4422 7416 CHAPEL HILL ROAD, RALEIGH, N. C. 27607

NO.	DATE	NO.	DATE	REVISIONS
1	6/28/96	1	6/28/96	
2	7/17/96	2	7/17/96	
3	8/7/96	3	8/7/96	

SCALE: 1" = 30'

96047000 5/15/96  
JOB NO. DATE DRAWN BY  
GRADING, UTILITIES, STORM SEWER AND EROSION CONTROL PLAN  
NO. DATE NO. DATE

MINI STORAGE FACILITY  
CENTREWEST at SILVERTON - LOT 2A  
TOWN OF CARY, N.C.

SHEET  
C2  
OF  
7

Professional Engineer Seal for North Carolina, No. 4504, dated 12-29-96, for Dr. C. Kennedy.