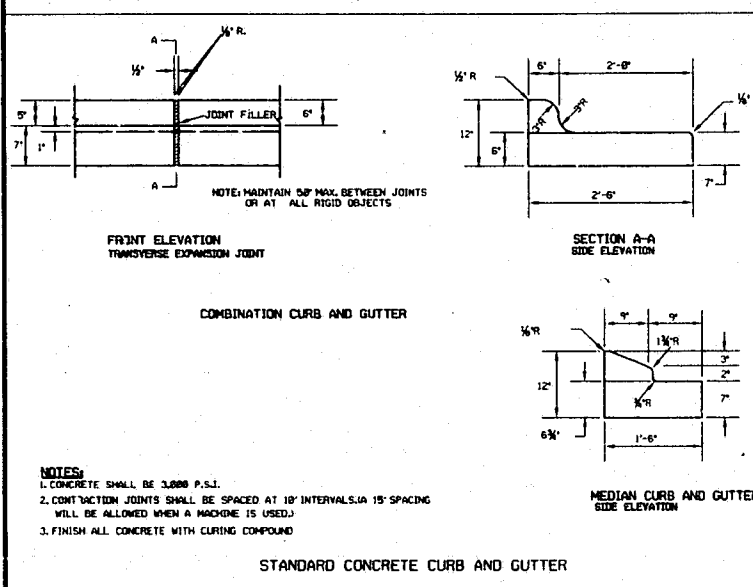
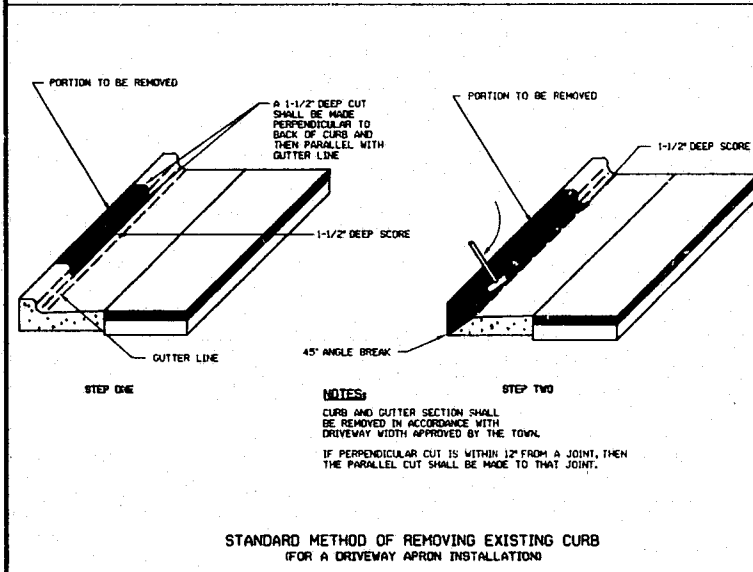


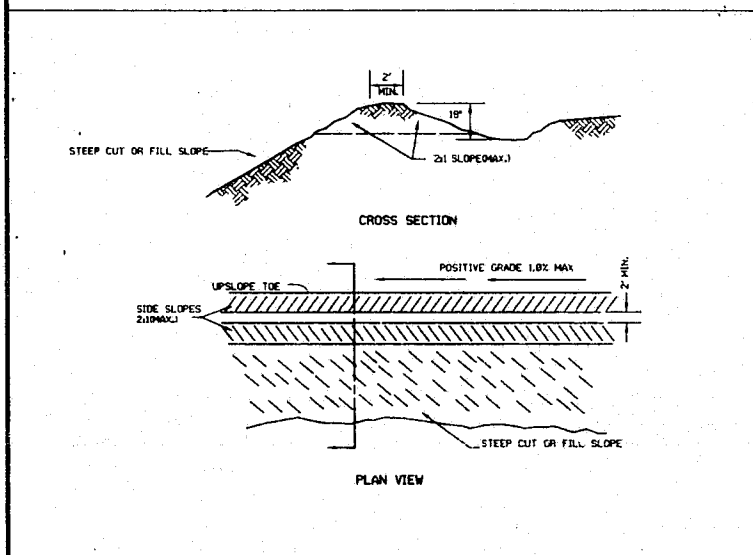
A.B.C. UNDER 2'-6" CURB & GUTTER



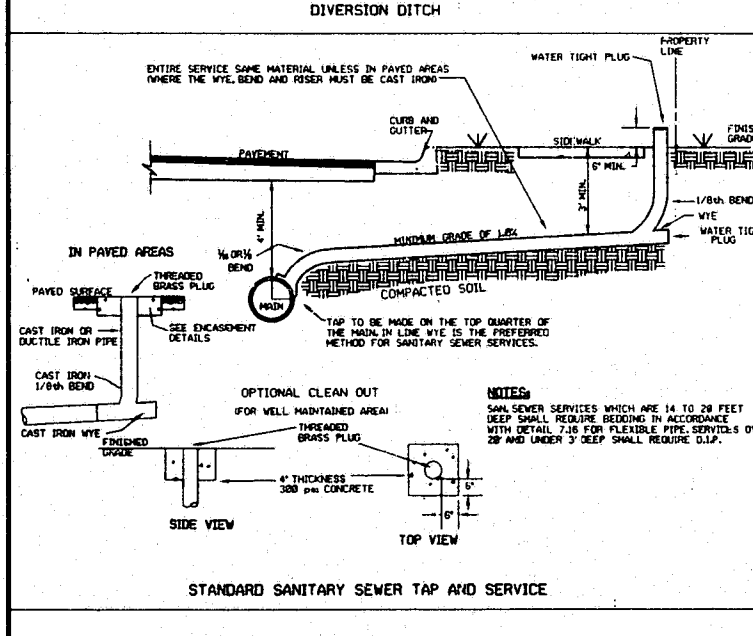
STANDARD CONCRETE CURB AND GUTTER



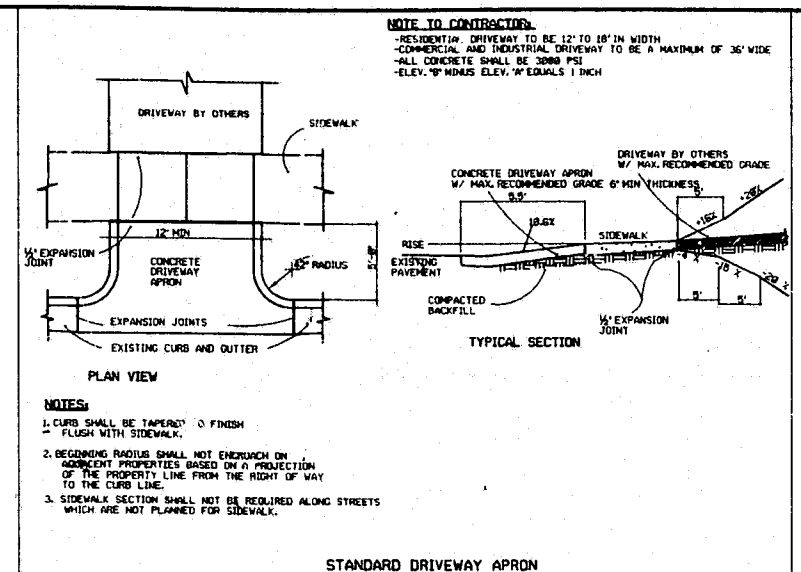
STANDARD METHOD OF REMOVING EXISTING CURB FOR A DRIVEWAY APRON INSTALLATION



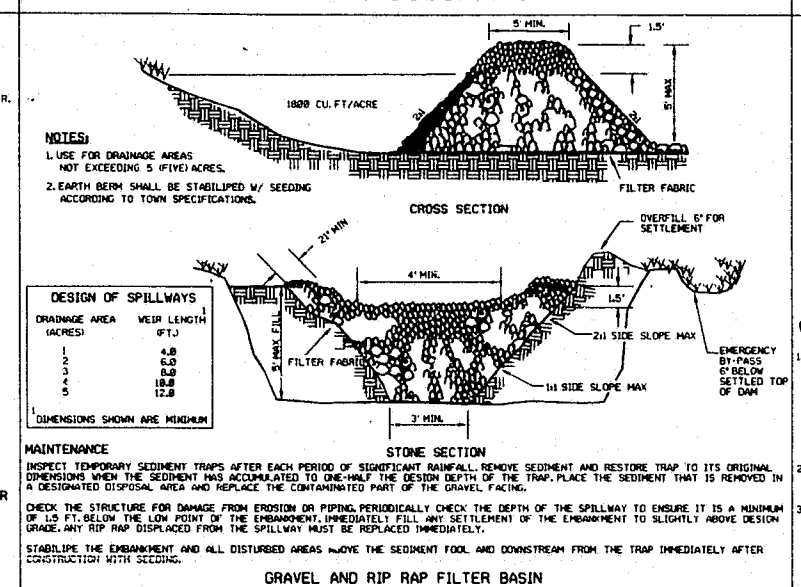
DIVERSION DITCH



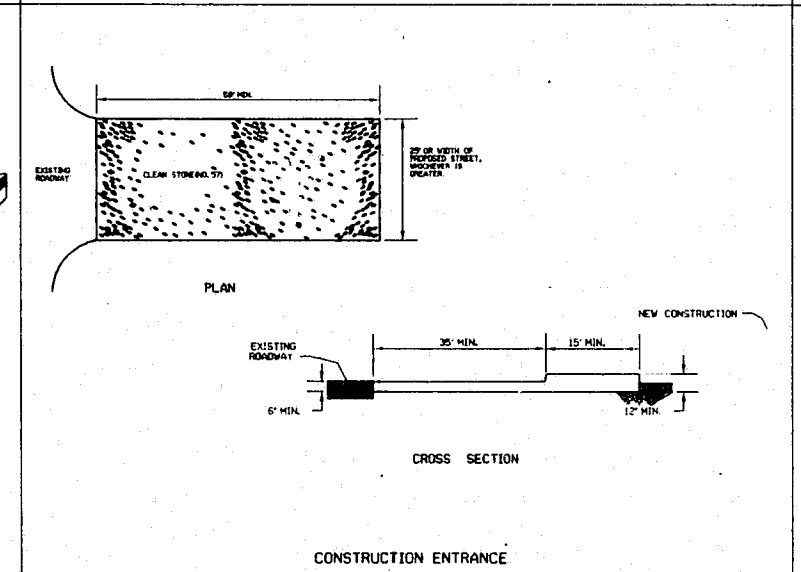
STANDARD SANITARY SEWER TAP AND SERVICE



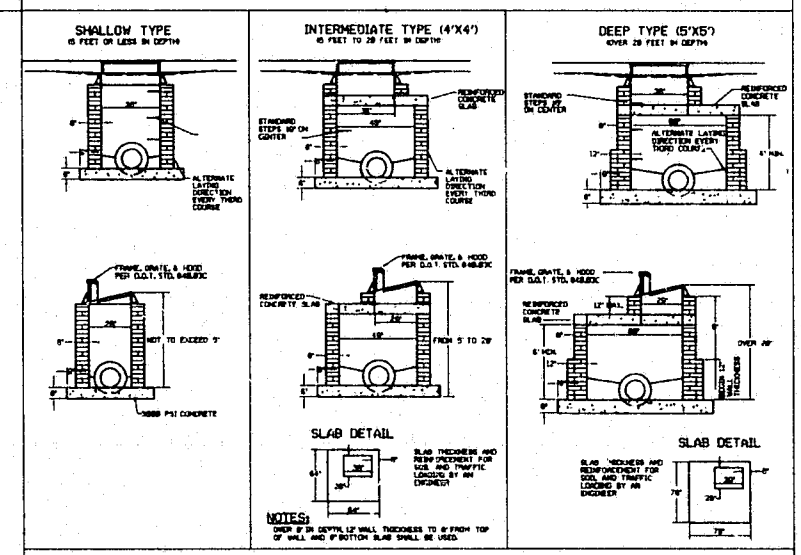
STANDARD DRIVEWAY APRON



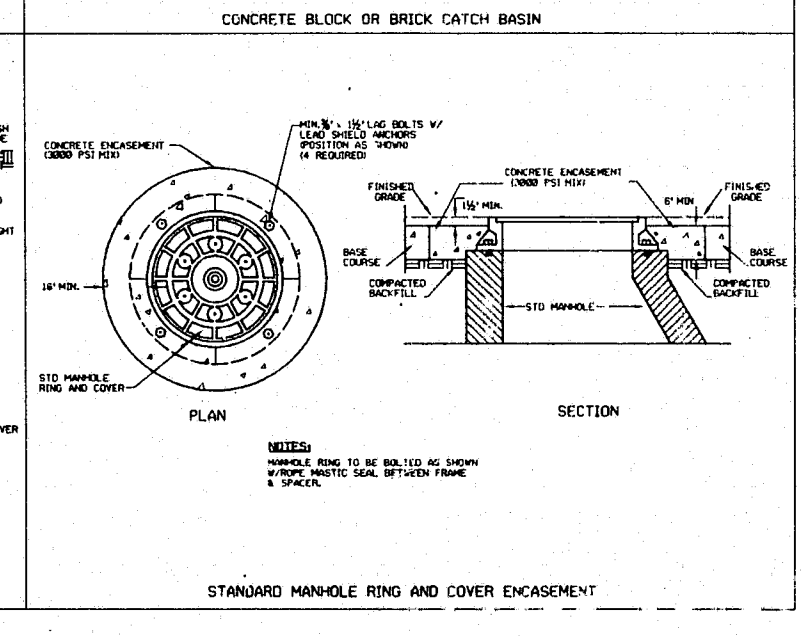
DESIGN OF SPILLWAYS



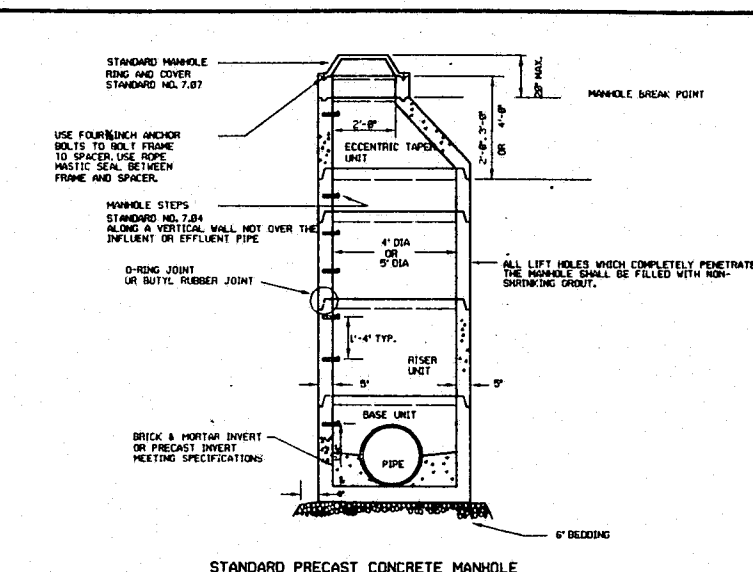
GRAVEL AND RIP RAP FILTER BASIN



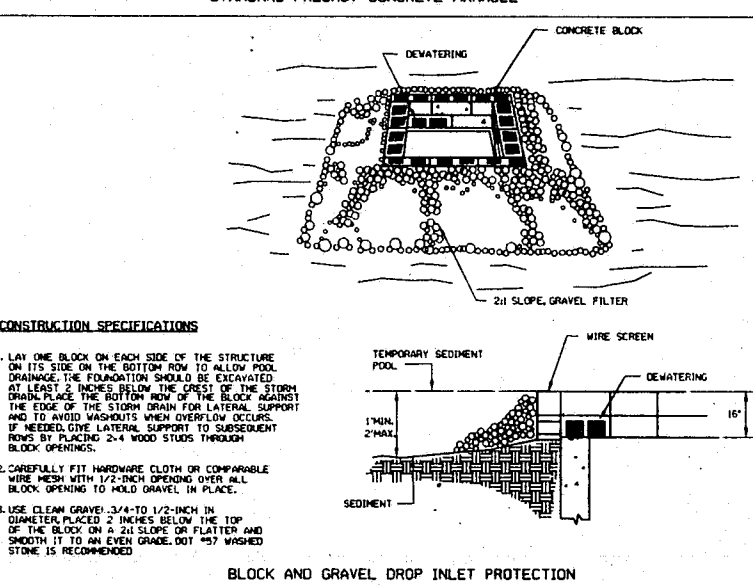
CONSTRUCTION ENTRANCE



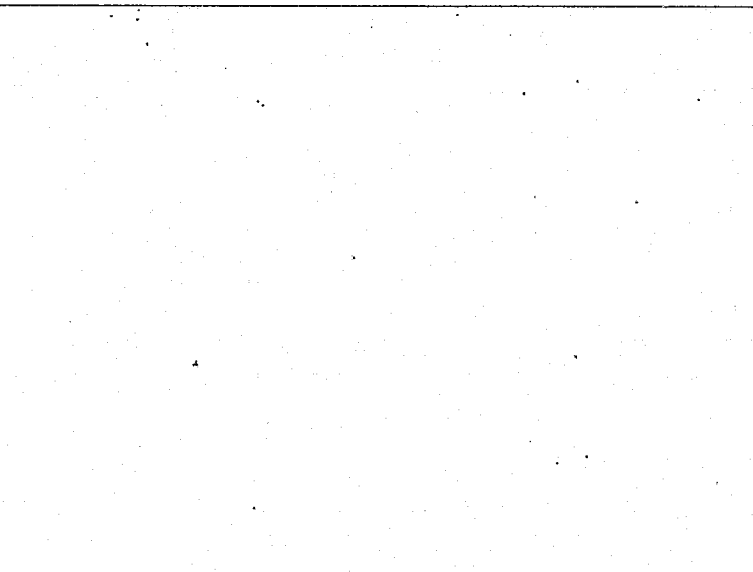
CONCRETE BLOCK OR BRICK CATCH BASIN



STANDARD PRECAST CONCRETE MANHOLE



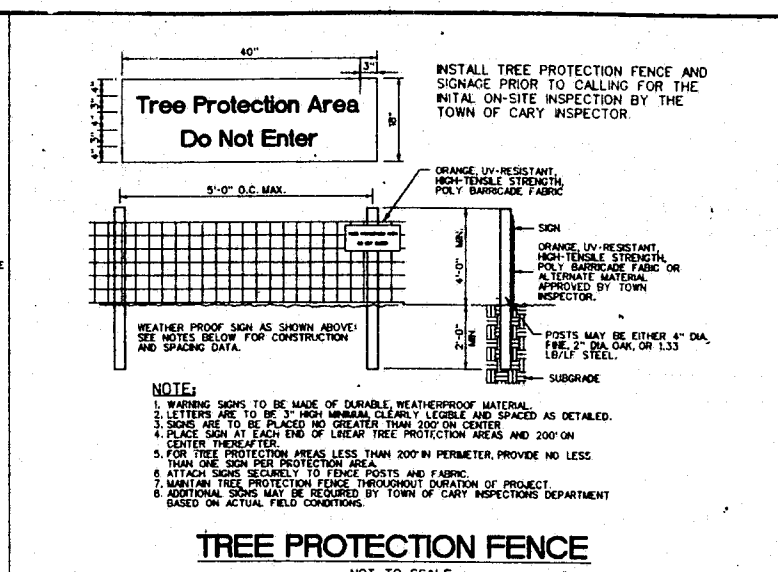
BLOCK AND GRAVEL DROP INLET PROTECTION



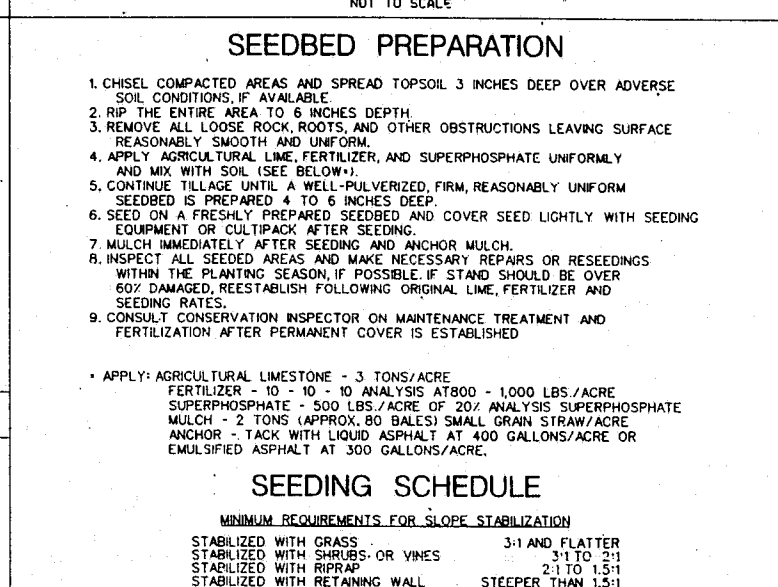
SEEDBED PREPARATION



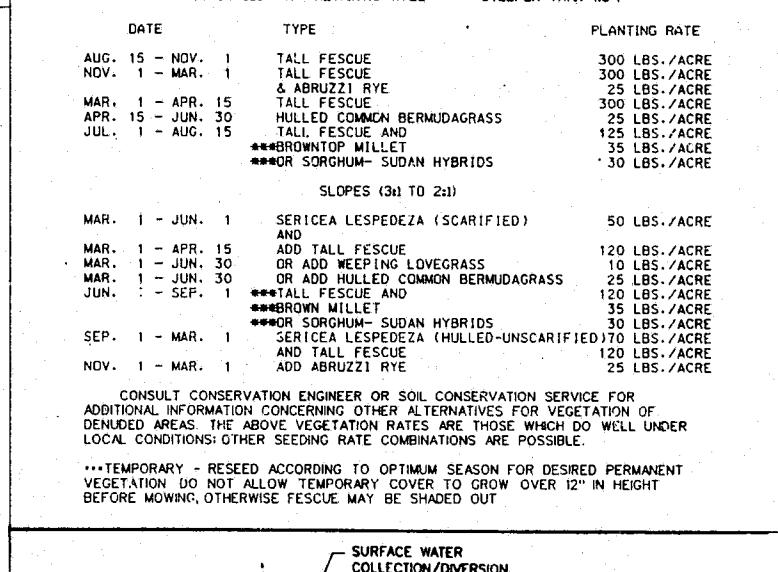
RETAINING WALL



TREE PROTECTION FENCE



SEEDING SCHEDULE



CONSTRUCTION SEQUENCE

WATER SERVICES
 WATER SERVICES FROM MAN TO METER SHALL BE 3/4" TYPE K SOFT COPPER TUBING (ASTM B88).
 3/4" METER BOXES SHALL BE CAST IRON AND CONSIST OF A COMPLETE UNIT FOR SETTING A 5/8" X 3/4" WATER METER. METER STOPS SHALL BE O-RING SEALED AND HAVE AN INLET ANGLE 60° AS MANUFACTURED BY FORD (YL-221-233) OR APPROVED EQUAL WITH LOCKING LID.
 METERS SHALL BE INSTALLED BY THE TOWN OF CARY UTILITIES DEPARTMENT.

SANITARY SEWER SERVICES
 SANITARY SEWER SERVICES SHALL BE 4" CAST IRON ABS OR PVC PER TOWN OF CARY STANDARD. SERVICES SHALL BE PERPENDICULAR FROM THE SEWER MAIN TO THE STREET RIGHT-OF-WAY OR EDGE OF EASEMENT.
 SERVICE CONNECTIONS TO EXISTING SEWER MAINS SHALL BE INSTALLED BY THE TOWN OF CARY UTILITIES DEPARTMENT.
 SERVICE LINES WITH A COVER OF 8' OR GREATER SHALL REQUIRE CLASS 1 BEDDING PER TOWN OF CARY STANDARDS.

GENERAL NOTES
 SANITARY SEWER:
 BACKFLOW PREVENTORS SHALL BE PROVIDED FOR ALL UTILITIES WITH FINAL FLOOR ELEVATIONS OF BUILDINGS LESS THAN 1' ABOVE MANHOLE (LOCATE ON PRIVATE SIDE OF CLEANOUT).
 MINIMUM GROUND COVER OF 3' SHALL BE PROVIDED FOR ALL SANITARY SEWER COLLECTION LINES 4" AND LARGER IN NONTRAFFIC AREAS.
 MINIMUM COVER OF 4" FROM SUB-BASE IN TRAFFIC AREAS SHALL BE PROVIDED FOR ALL COLLECTOR LINES 4" AND LARGER. IF MINIMUM COVER AND 4" DUCTILE IRON PIPE SHALL BE REQUIRED IN CLASS 1 BEDDING (MINIMUM COVER SHALL BE 2" NO LESS THAN 3/2").
 MINIMUM SLOPE FOR 4" SANITARY SEWER COLLECTION LINES SHALL BE NO LESS THAN 1/2" WITH CLEANOUTS EVERY 50 LINEAL FEET.
 MINIMUM SLOPE FOR 6" SANITARY SEWER COLLECTION LINES SHALL BE NO LESS THAN 0.62" WITH CLEANOUTS EVERY 100 LINEAL FEET.
 MAINTAIN 12" VERTICAL SEPARATION FROM STORM SEWER OR SPECIFY FERROUS PIPE FOR SANITARY SEWER. ALSO MAINTAIN 10" HORIZONTAL SEPARATION AND 18" VERTICAL SEPARATION FROM WATER MAINS OR SPECIFY FERROUS PIPE FOR SANITARY SEWER.
 WATER MAINS SHALL BE INSTALLED AT A DEPTH WITH A MINIMUM COVER OF 3' WITH 18" VERTICAL CLEARANCE FROM UNDERGROUND UTILITIES AND 10" HORIZONTAL CLEARANCE FROM ALL OTHER UTILITIES.
 PRESSURE REDUCING VALVE SHALL BE PROVIDED IF PRESSURE IS IN EXCESS OF 80 PSI (PRESSURE REDUCERS FOR WATER SERVICES SHALL BE ON PRIVATE SIDE OF WATER METER).
 GENERAL:
 ALL WATER AND SEWER MAINS WITHIN PUBLIC EASEMENTS AND RIGHTS-OF-WAY SHALL BE OWNED, OPERATED, AND MAINTAINED BY THE PUBLIC AUTHORITY.
 ALL CONSTRUCTION SHALL CONFORM TO LOCAL AUTHORITY STANDARDS.
 ALL UNDERGROUND UTILITIES ARE APPROXIMATELY LOCATED. ACTUAL LOCATION AND DEPTH SHALL BE CONFIRMED IN THE FIELD PRIOR TO CONSTRUCTION.
 STORM SEWER (RCP) SHALL BE CONSTRUCTED TO THE FOLLOWING CLASSES:
 COVER LESS THAN 10' CLASS C OR D BEDDING, CLASS II WALLS
 COVER 10' TO 15' CLASS B BEDDING, CLASS II WALLS
 COVER GREATER THAN 15' CLASS B BEDDING, CLASS IV WALLS
 PRIOR TO BEGINNING ANY CONSTRUCTION OF IMPROVEMENTS WITHIN ANY CITY OR NCDDOT STREET OR HIGHWAY RIGHT-OF-WAY, THE FOLLOWING PROCEDURES SHALL BE UNDERTAKEN:
 CITY RIGHT-OF-WAY: CONTACT LOCAL AUTHORITIES TRAFFIC ENGINEERING DEPARTMENT FOR INFO ON DETOURS, OPEN-CUTTING OF STREETS, OR FOR ANY CONSTRUCTION WITHIN RIGHT-OF-WAY.
 NCDDOT RIGHT-OF-WAY: CONTACT PROJECT ENGINEERS AND OBTAIN ALL PERMITS AND ENCROACHMENTS (KEEP COPIES ON CONSTRUCTION SITE). ALSO CONTACT NCDDOT DISTRICT OFFICE 24 HOURS IN ADVANCE PRIOR TO PLACING CURB AND GUTTER.

DRIVEWAY: APPROVAL NO. _____ DATE _____

ENCROACHMENT FORM 16.1 (2-PARTY UTILITY) APPROVAL NO. _____ DATE _____

ENCROACHMENT FORM 16.1A (2-PARTY NON-UTILITY) APPROVAL NO. _____ DATE _____

ENCROACHMENT FORM 16.1B (STORM AND WIDENING) APPROVAL NO. _____ DATE _____

ENCROACHMENT FORM 16.6 (3-PARTY UTILITY) APPROVAL NO. _____ DATE _____

IT'S THE LAW!
 AS OF JANUARY 1, 1986, NORTH CAROLINA STATE LAW REQUIRES ANY EXCAVATION WITH MECHANICAL EQUIPMENT ON HIGHWAY RIGHTS-OF-WAY, PRIVATE UTILITY EASEMENTS, OR PUBLIC SPACES TO NOTIFY ALL UTILITIES TWO (2) WORKING DAYS PRIOR TO DIGGING.

- OBTAIN GRADING PERMIT
- INSTALL ALL EROSION CONTROL MEASURES AS SHOWN.
- OBTAIN CERTIFICATE OF COMPLIANCE THROUGH ON-SITE INSPECTION BY TOWN EROSION CONTROL ENGINEER.
- PROCEED WITH GRADING.
- CLEAN SEDIMENT BASINS WHEN HALF FULL.
- SEED AND MULCH DENUDEED AREAS WITHIN 30 DAYS AFTER FINISHED GRADES ARE ESTABLISHED.
- MAINTAIN SOIL EROSION CONTROL MEASURES UNTIL PERMANENT GROUND COVER IS ESTABLISHED.
- REMOVE SOIL EROSION CONTROL MEASURES AND STABILIZE THESE AREAS.
- REQUEST FINAL APPROVAL BY TOWN EROSION CONTROL ENGINEER.
- TOTAL DENUDEED AREA - 3.9 ACRES.

