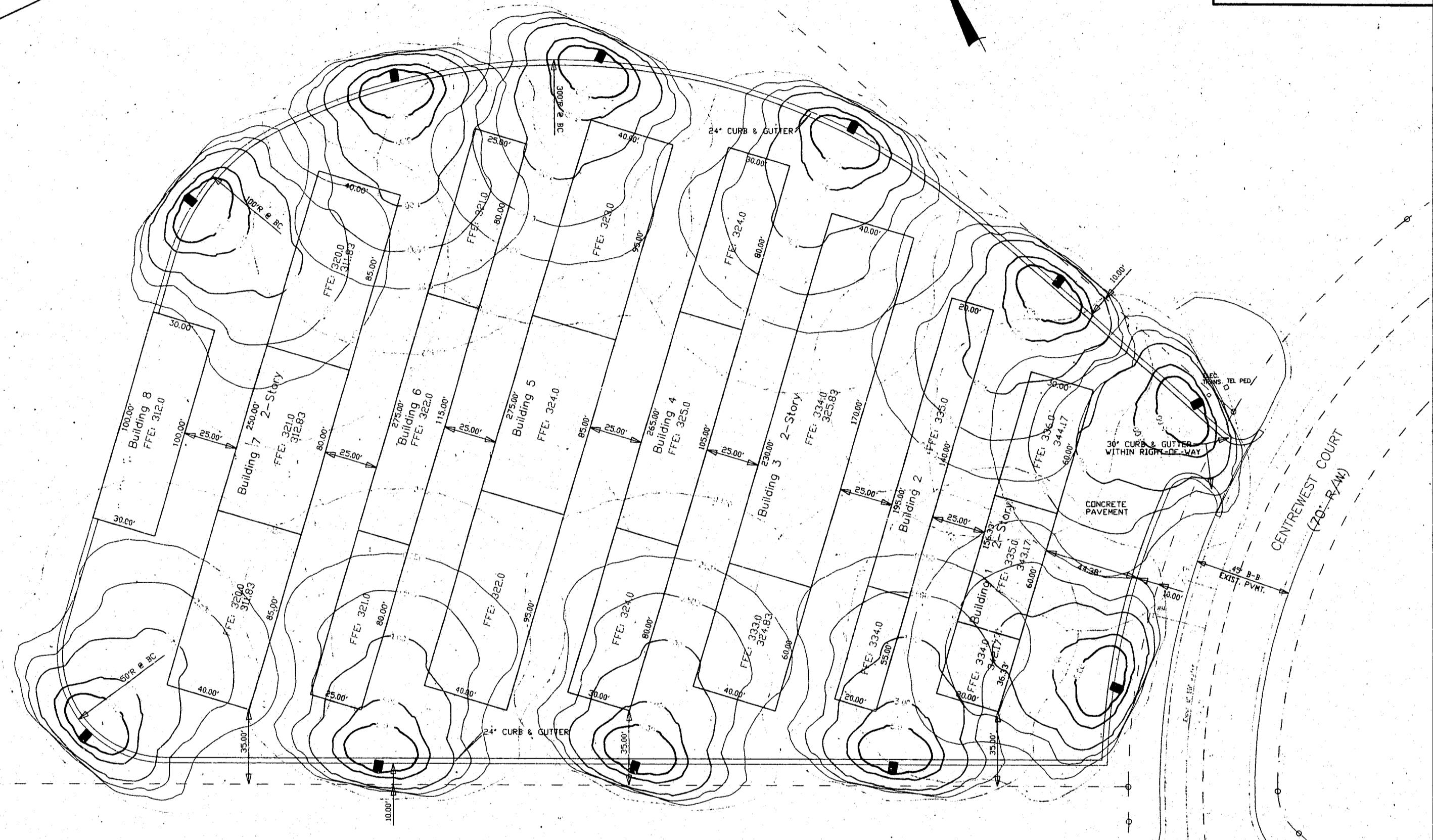
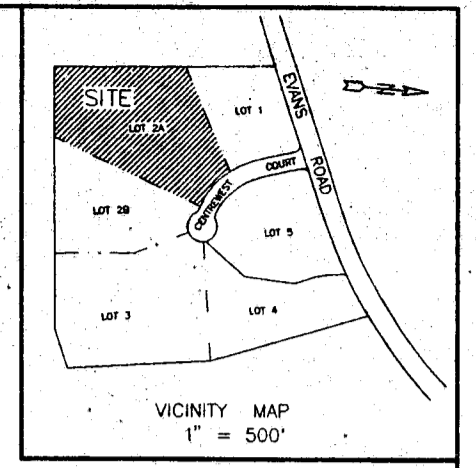
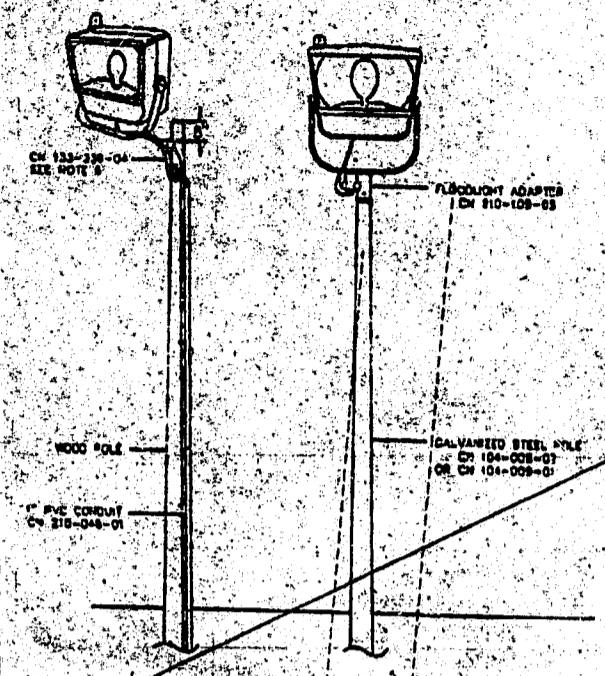


NO.	DATE	REVISION
1	7-19-96	ADD FIXTURE DETAIL



LIGHTING NOTES

TOTAL LIGHTS 11
 LUMINAIRE 27,500 FLOOD
 MH 28'

HIGHER MH (50 FT.) ARE RECOMMENDED FOR BETTER UNIFORMITY RATIO.

NOTE :

1. ALL CONSTRUCTION TO BE IN ACCORDANCE WITH TOWN OF CARY CURRENT STANDARDS AND SPECIFICATIONS.
2. PAVEMENT DESIGN TO BE IN ACCORDANCE WITH MINIMUM TOWN OF CARY REQUIREMENT, UNLESS SOIL REPORT REQUIRES AN ALTERNATE DESIGN



CAROLINA POWER & LIGHT COMPANY
 RALEIGH, NORTH CAROLINA

MINI STORAGE FACILITY	
CENTREWEST AT SILVERTON - LOT 2A	
Layout by T. WILLIAMS	Location CARY, N.C.
Drawn by D.T./CADD GRAPHICS	Scale 1" = 30'
Checked by _____	Date 5/15/96
Approved by _____	Dwg. No. SITEMAP
File No. _____	Rev. _____ Sht. 1 OF 1

No.	DATE	REVISION	BY	CK	APP
1	7-19-96	ADD FIXTURE DETAIL			