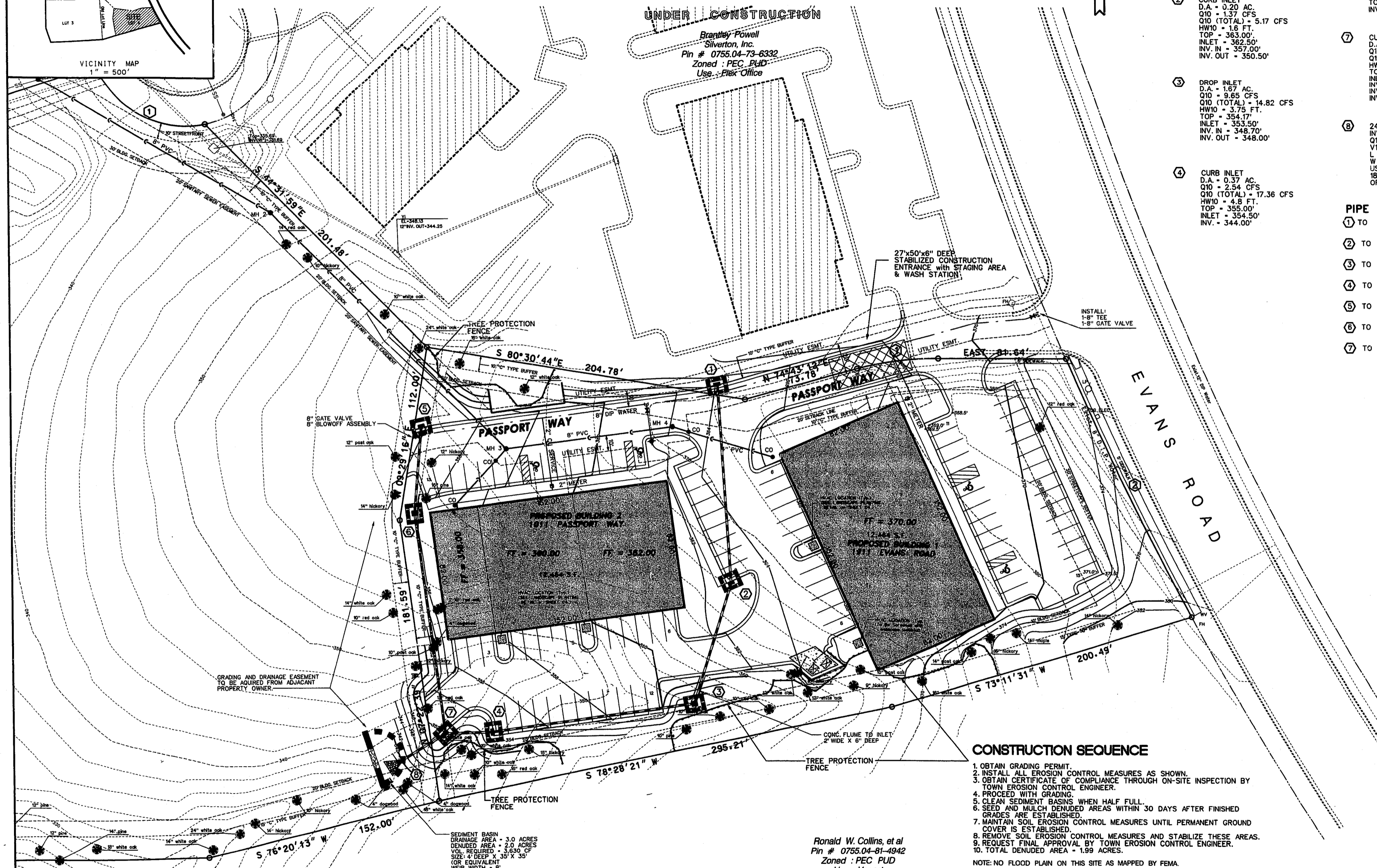


VICINITY MAP  
1" = 500'



**STORM DRAINAGE DATA**

- ① CURB INLET (TOWN OF CARY STD.)  
D.A. = 0.66 AC  
Q10 = 3.8 CFS  
HW10 = 1.3 FT.  
TOP = 364.50'  
INLET = 364.00'  
INV. = 359.00'
- ② CURB INLET  
D.A. = 0.27 AC  
Q10 = 1.37 CFS  
Q10 (TOTAL) = 5.17 CFS  
HW10 = 1.6 FT.  
TOP = 363.00'  
INLET = 362.50'  
INV. IN = 357.00'  
INV. OUT = 350.50'
- ③ DROP INLET  
D.A. = 1.57 AC  
Q10 = 9.65 CFS  
Q10 (TOTAL) = 14.82 CFS  
HW10 = 3.75 FT.  
TOP = 354.17'  
INLET = 353.50'  
INV. IN = 348.70'  
INV. OUT = 348.00'
- ④ CURB INLET  
D.A. = 0.20 AC  
Q10 = 2.54 CFS  
Q10 (TOTAL) = 17.36 CFS  
HW10 = 4.8 FT.  
TOP = 355.00'  
INLET = 354.50'  
INV. = 344.00'

- ⑤ CURB INLET  
D.A. = 0.27 AC  
Q10 = 1.75 CFS  
HW10 = 0.8 FT.  
TOP = 354.40'  
INLET = 353.90'  
INV. = 345.90'
- ⑥ JUNCTION BOX  
D.A. = 0  
Q10 (TOTAL) = 1.75 CFS  
TOP = 356.00'  
INV. = 345.30'
- ⑦ CURB INLET  
D.A. = 0.10 AC  
Q10 = 0.69 CFS  
Q10 (TOTAL) = 19.80 CFS  
HW10 = 3.0 FT.  
TOP = 352.50'  
INLET = 352.00'  
INV. IN (CL 4) = 343.00'  
INV. IN (CL 6) = 344.00'  
INV. OUT = 339.50'
- ⑧ 24" FES  
INV. = 338.50'  
Q10 = 19.80 CFS  
V10 = 12.71 FPS  
L = 20 FT.  
W = 6 FT.  
USE NCDOT CLASS "1" RIP-RAP  
18" DEEP WITH 6" WASHED STONE  
OR GEOTEXTILE FABRIC BASE

**PIPE DATA**

- ① TO ② 128 LF 15" RCP @ 4.69%
- ② TO ③ 76 LF 15" RCP @ 2.37%
- ③ TO ④ 128 LF 18" RCP @ 3.13%
- ④ TO ⑦ 24 LF 18" RCP @ 4.17%
- ⑤ TO ⑥ 56 LF 15" RCP @ 1.07%
- ⑥ TO ⑦ 140 LF 15" RCP @ 0.93%
- ⑦ TO ⑧ 32 LF 24" RCP @ 3.13%

UNDER CONSTRUCTION  
Brantley Powell  
Silverton, Inc.  
Pin # 0755.04-73-6332  
Zoned : PEC, PUD  
Use : Flex Office

27'x50'x6" DEEP  
STABILIZED CONSTRUCTION  
ENTRANCE WITH STAGING AREA  
& WASH STATION

INSTALL:  
1-8" TEE  
1-8" GATE VALVE

GRADING AND DRAINAGE EASEMENT  
TO BE ACQUIRED FROM ADJACENT  
PROPERTY OWNER

SEDIMENT BASIN  
DRAINAGE AREA = 3.0 ACRES  
DENUDE AREA = 2.0 ACRES  
VOL. REQUIRED = 3,630 CF  
SIZE: 4' DEEP X 35' X 35'  
(OR EQUIVALENT  
WEIR WIDTH = 6')

Ronald W. Collins, et al  
Pin # 0755.04-81-4942  
Zoned : PEC PUD  
Use : Vacant

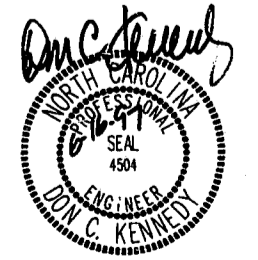
**CONSTRUCTION SEQUENCE**

1. OBTAIN GRADING PERMIT.
2. INSTALL ALL EROSION CONTROL MEASURES AS SHOWN.
3. OBTAIN CERTIFICATE OF COMPLIANCE THROUGH ON-SITE INSPECTION BY TOWN EROSION CONTROL ENGINEER.
4. PROCEED WITH GRADING.
5. CLEAN SEDIMENT BASINS WHEN HALF FULL.
6. SEED AND MULCH DENUDE AREAS WITHIN 30 DAYS AFTER FINISHED GRADES ARE ESTABLISHED.
7. MAINTAIN SOIL EROSION CONTROL MEASURES UNTIL PERMANENT GROUND COVER IS ESTABLISHED.
8. REMOVE SOIL EROSION CONTROL MEASURES AND STABILIZE THESE AREAS.
9. REQUEST FINAL APPROVAL BY TOWN EROSION CONTROL ENGINEER.
10. TOTAL DENUDE AREA = 1.99 ACRES.

NOTE: NO FLOOD PLAIN ON THIS SITE AS MAPPED BY FEMA.

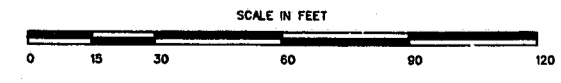
PROP. L.F. 8" WATER MAIN = 407.6 L.F.  
PROP. L.F. 8" SAN. SEWER = 491.1 L.F.

97-5P-123  
**APPROVED**  
6-27-97  
TM 6-27-97



**DATA**

DELTA/BEARING	RADIUS	LEN./DIST.	TANGENT
① 15° 16' 46"	197.00	52.54	26.42
② 5° 06' 52"	2064.24	184.26	92.19



BASS, NIXON, & KENNEDY, INC. CONSULTING ENGINEERS  
919-861-4422 7416 CHAPEL HILL ROAD, RALEIGH, N. C. 27607

NO.	DATE	REVISIONS
4	2/4/97	
3	1/2/97	
2	12/17/96	
1	10/18/96	

**CENTREWEST of SILVERTON - LOT 4**  
TOWN OF CARY WAKE COUNTY NORTH CAROLINA

SHEET  
C2  
OF

RELEASED FOR CONSTRUCTION