

Revisions	By
ISSUED FOR PERMIT 4/22/99	

File OP5A-1

**CARYVEST, L.L.C.**  
 4244 INTERNATIONAL PARKWAY, SUITE 134  
 ATLANTA, GA 30336 404-367-6000

**Lyman Davidson Dooley Inc.**

ARCHITECTURE  
 INTERIOR DESIGN  
 PLANNING

ATLANTA, GA  
 1640 POWERS FERRY RD.  
 BUILDING 1, SUITE 100  
 MARIETTA, GA 30067  
 (770) 850-8484  
 FAX: (770) 850-8993

NASHVILLE, TN  
 (615) 244-7399  
 FAX: (615) 244-6697

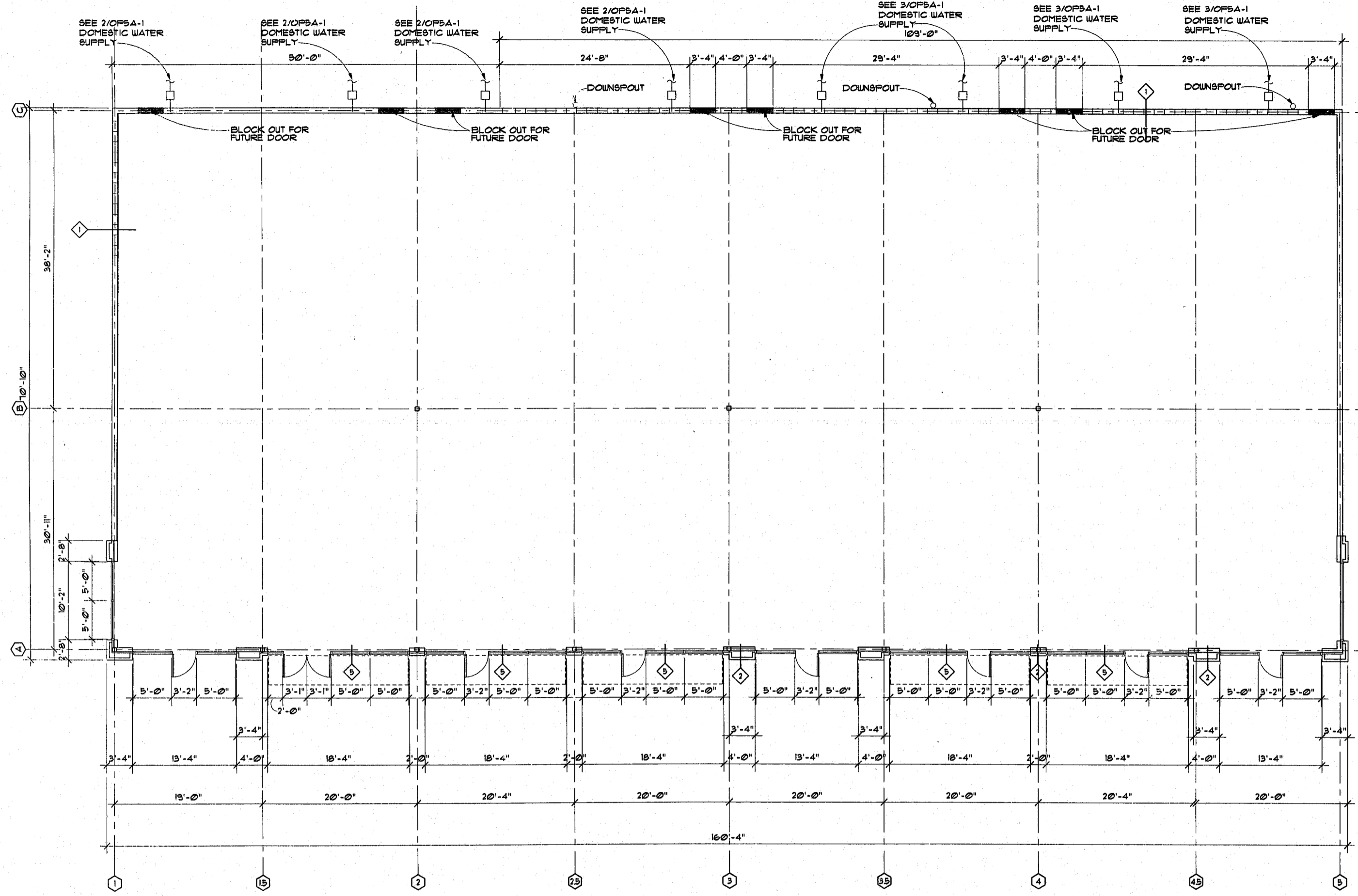
TAMPA, FL  
 (813) 288-9299  
 FAX: (813) 288-8046

**OUTPARCEL #5**  
 CENTRUM AT CROSSROADS  
 WALNUT STREET/ DILLARD DRIVE  
 CITY OF CARY, N.C.

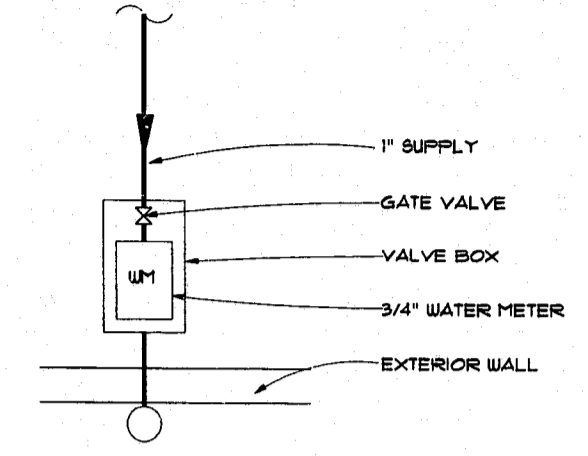
FLOOR PLAN

Date	4/22/99
Scale	
Drawn	RW
Quality Control	
Job	98027.05
Sheet	<b>OP5A-1</b>
of Sheets	

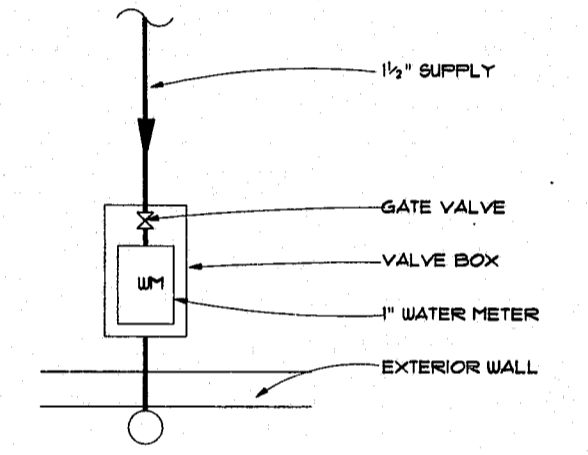
ISSUED FOR PERMIT



**1 FLOOR PLAN**  
 SCALE: 1/8" = 1'-0"



**2 VALVE ASSEMBLY RISER**  
 N.T.S.



**3 VALVE ASSEMBLY RISER**  
 N.T.S.

**APPROVED**  
 TER 9-1-99  
 TM 9-1-99