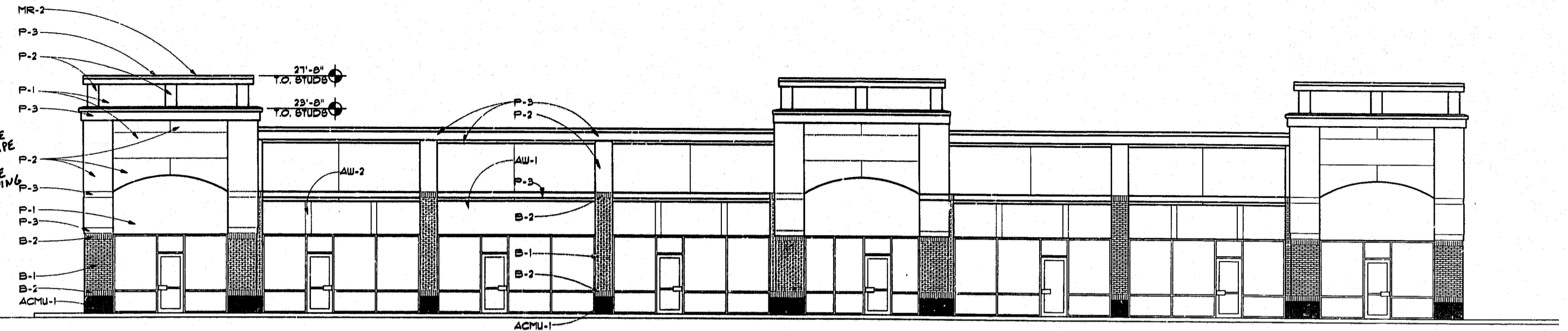


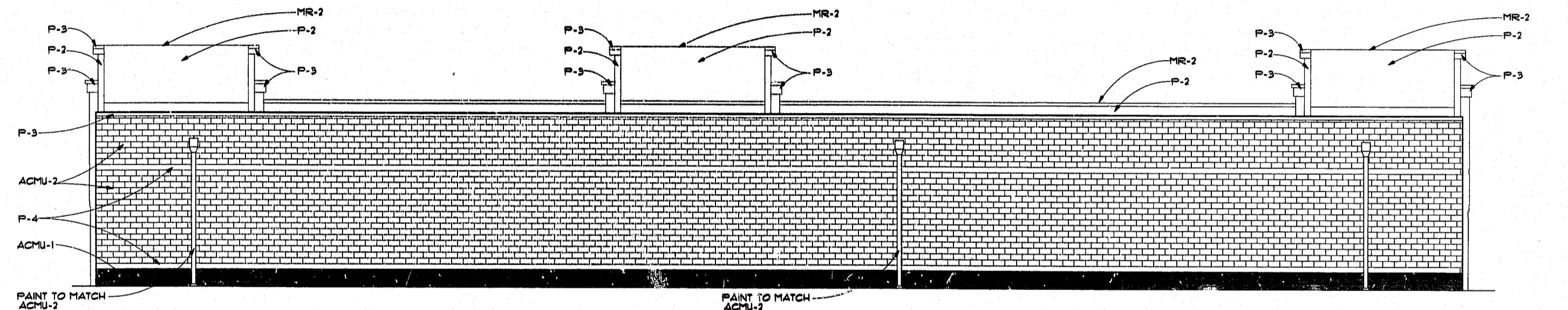
**EXTERIOR FINISH SCHEDULE**

B-1	BORAL 513 "VICTORIAN ROBE"	MR-1	AEP- SPAN LILLY COLONIAL RED
B-2	BORAL 521 "BORDEAUX" ALTERNATE: SPLIT FACE CMU TO MATCH	MR-2	AEP- SPAN LILLY FAIRCHMENT (COPING)
ACMU-1	SPLITFACE "METROMONT" RUSTIC RED #46	AW-1	SUNBRELLA "ROYAL BLUE" #8611, FIRE RESISTANT
ACMU-2	SPLITFACE "METROMONT" SAND PEBBLE #88	AW-2	SUNBRELLA "NATURAL WHITE" #8624, FIRE RESISTANT
P-1	SPECTRUM BROWN "DRYVIT" #142	G-1	CLEAR 1" INSULATED UNIT
P-2	VAN DYKE "DRYVIT" #110	G-2	CLEAR 1" INSULATED UNIT TEMPERED
P-3	BRITE WHITE "DRYVIT" #102	S-1	SEALANT BY TREMCO DYMERIC AT EIFS, BEIGE
P-4	SANDBLAST DPR "DRYVIT" S/C # B 28-66-05-10-04 "MATCH B-2" CS # 1402	S-2	SEALANT BY TREMCO DYMERIC AT CMU, REDWOOD TAN
M-1	RAINBOW SANDSTONE 185		
SF-1	STOREFRONT BY KAUNEER TRI-FAB 451, DARK BRONZE		

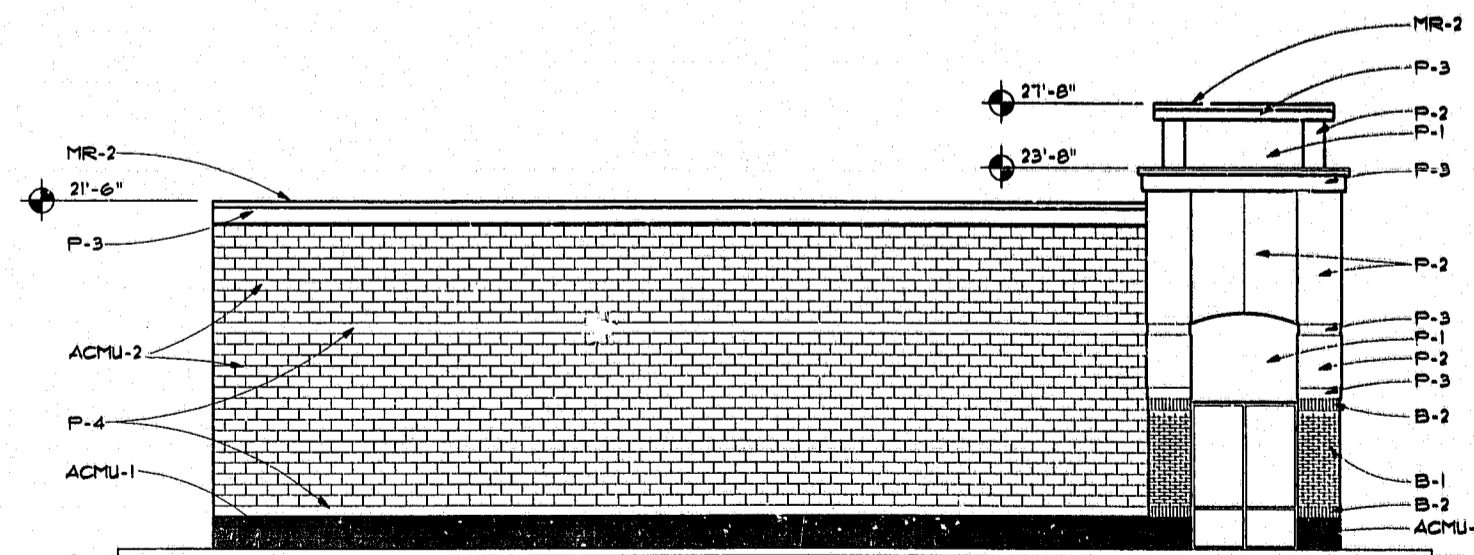
**NOTE:**  
ALL HVAC ROOF TOP UNITS ARE TO BE COMPLETELY HIDDEN FROM ALL DIRECTIONS, BY THE PARAPET WALL.



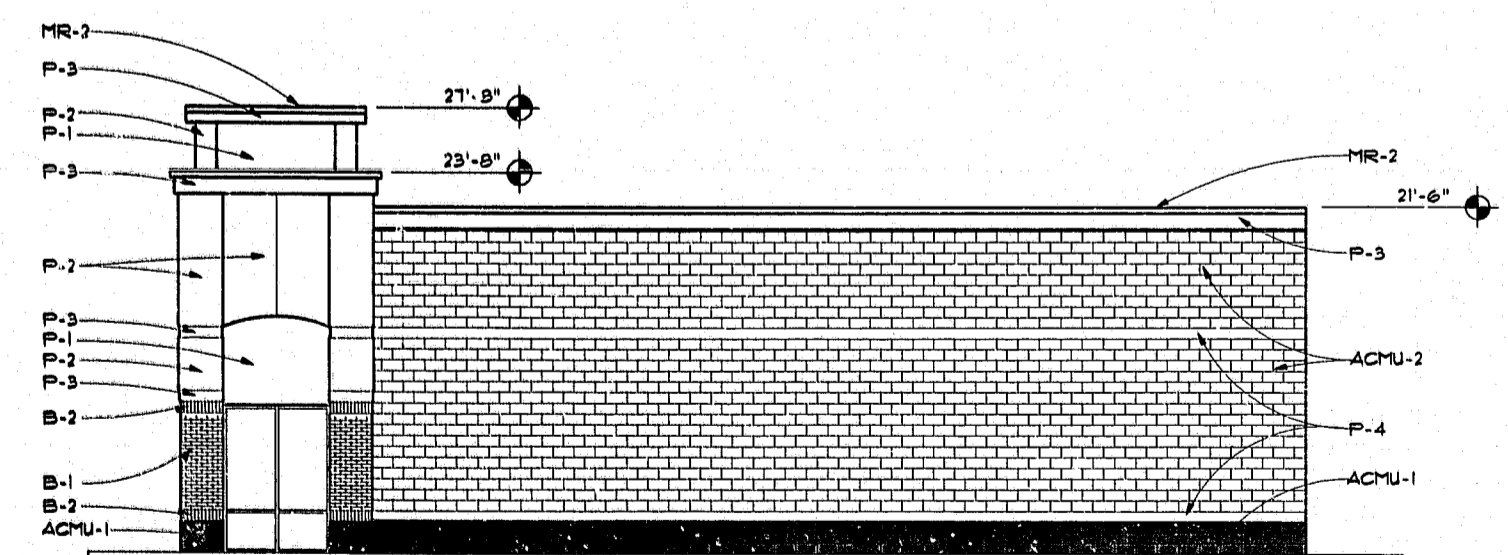
**1 SOUTH ELEVATION**  
SCALE: 1/8" = 1'-0"



**2 NORTH ELEVATION**  
SCALE: 1/8" = 1'-0"



**3 WEST ELEVATION**  
SCALE: 1/8" = 1'-0"



**4 EAST ELEVATION**  
SCALE: 1/8" = 1'-0"

**APPROVED**  
JEL 9-1-99  
TM 9-1-99

Revisions	By

File OP5A-1 EEL

**CARYVEST, L.L.C.**  
4244 INTERNATIONAL PARKWAY, SUITE 134  
ATLANTA, GA 30354 404-361-6000

**Lyman Davidson Dooley Inc.**

ARCHITECTURE  
INTERIOR DESIGN  
PLANNING

ATLANTA, GA  
1840 POWERS FERRY RD.  
BUILDING 1, SUITE 100  
MARIETTA, GA 30067  
(770) 850-8404  
FAX: (770) 850-8993

NASHVILLE, TN  
(615) 244-7399  
TAMPA, FL  
(813) 288-0209  
FAX: (813) 288-0248

**OUTPARCEL #5**  
CENTRUM AT CROSSROADS  
WALNUT STREET/ DILLARD DRIVE  
CITY OF CARY, N.C.

ELEVATIONS

Date	6/23/99
Scale	NOTED
Drawn	SAS
Quality Control	
Job	98021.05
Sheet	
<b>OP5A-1</b>	
of Sheets	