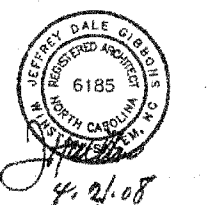
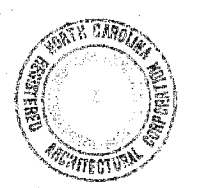


4622 Country Club Rd.
Suite 220
Winston-Salem, NC 27104
Telephone (336) 740-2805
Fax (336) 760-2806

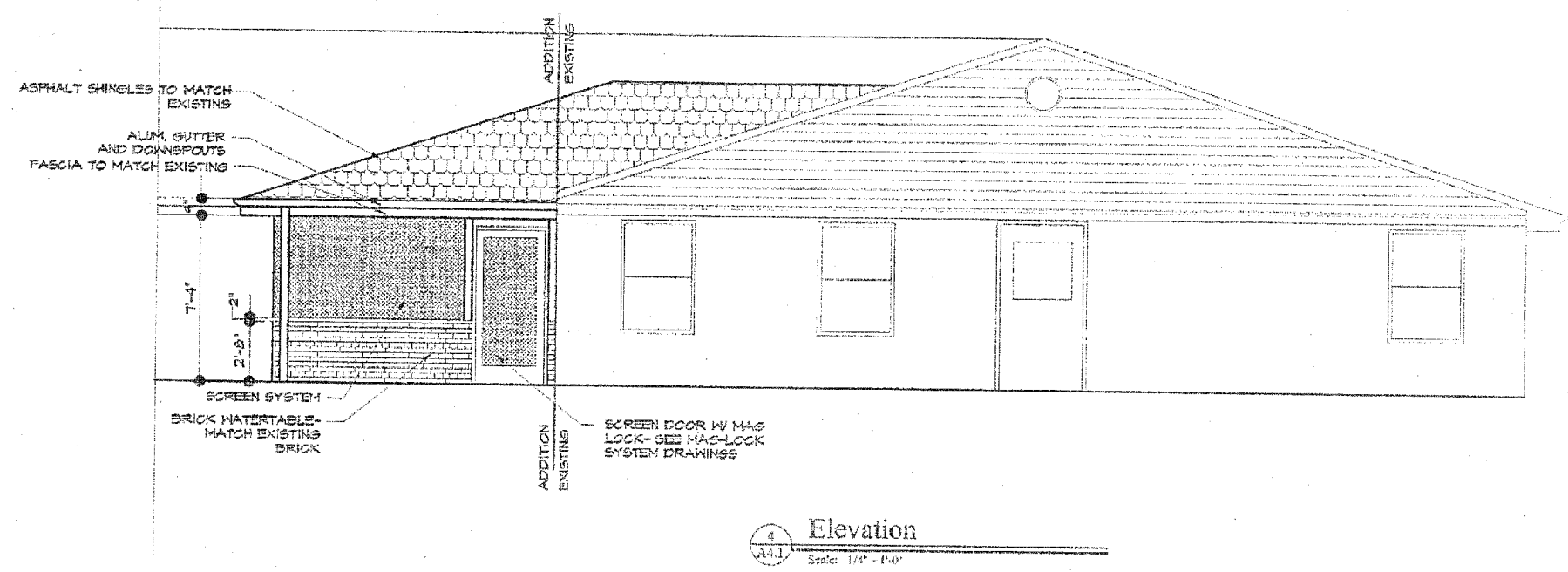
**Chatham Creek
Assisted Living
Cary, NC**



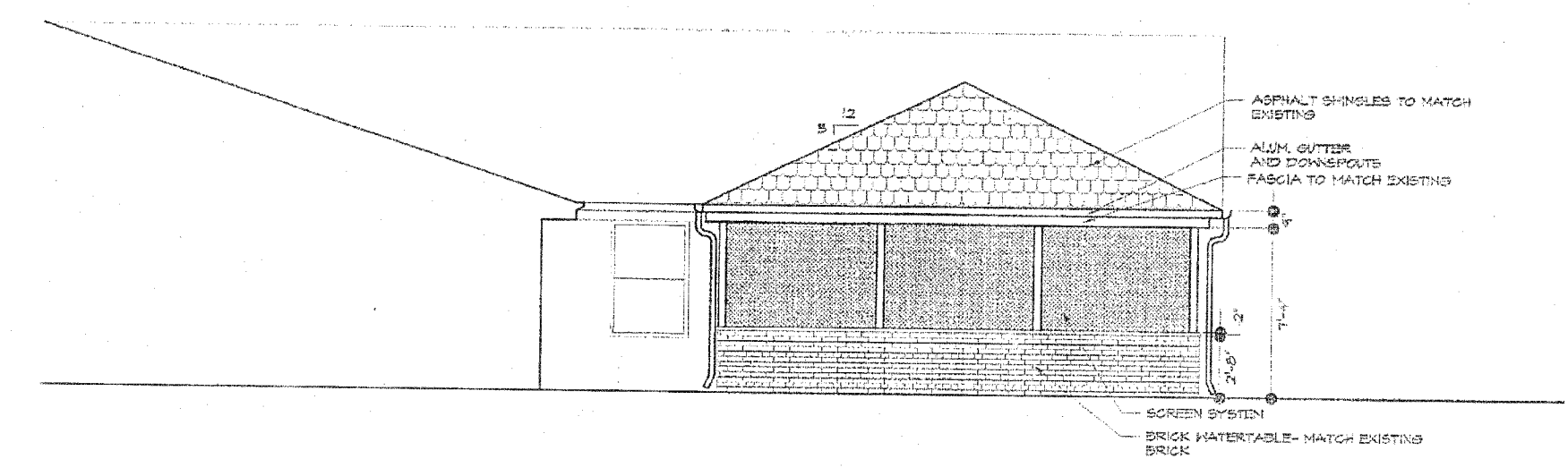
ELEVATIONS

Contract No.	1106
Date	
Drawn by	MJS
Checked by	KET

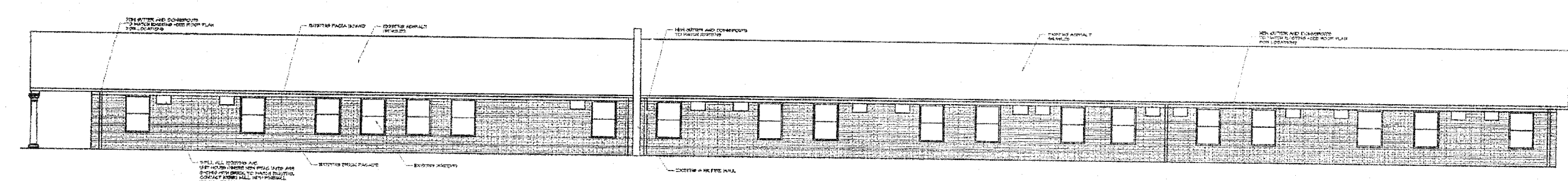
A4.1



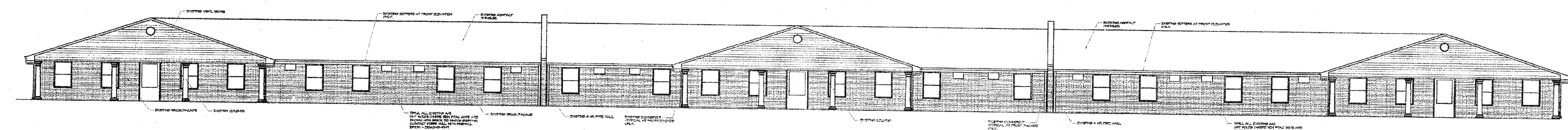
4 Elevation
Scale: 1/8" = 1'-0"



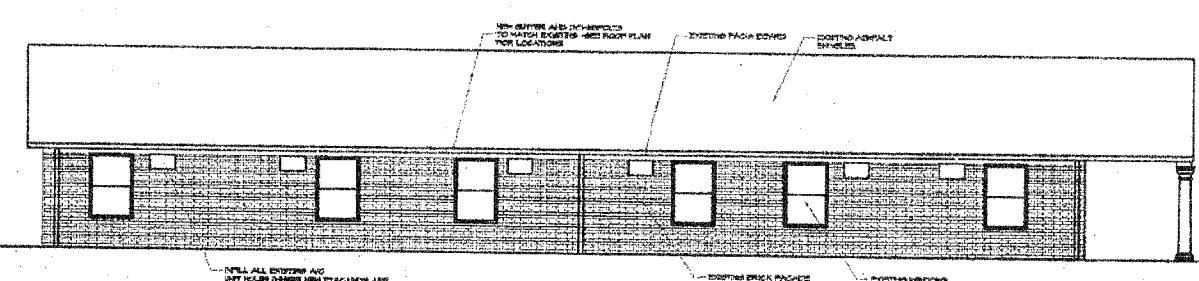
5 Elevation
Scale: 1/8" = 1'-0"



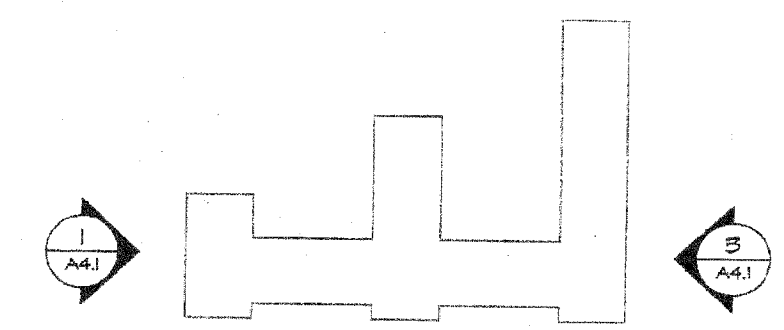
1 Elevation
Scale: 1/8" = 1'-0"



2 Elevation
Scale: 1/8" = 1'-0"



3 Elevation
Scale: 1/8" = 1'-0"



APPROVED
TOWN OF CARY
PROJECT NO. 08-SP-088
Approved by: DJC Date: 02-10-03
Planning: SS Date: 02-11-03
Engineering: SS Date: 02-27-04

ALL CONSTRUCTION MUST BE PERFORMED IN ACCORDANCE WITH CURRENT TOWN OF CARY AND NCDOT STANDARDS, SPECIFICATIONS AND DETAILS.

KEYPLAN