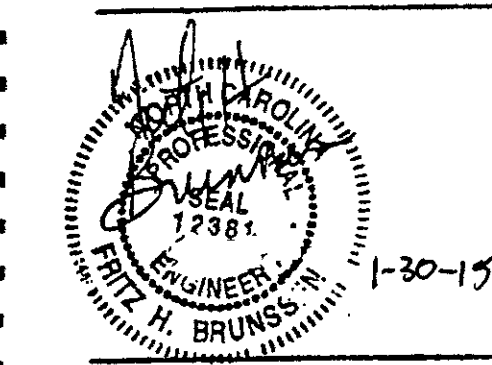


B
E
S

CHATHAM POINTE

901 WEST CHATHAM STREET
CARY, NORTH CAROLINA

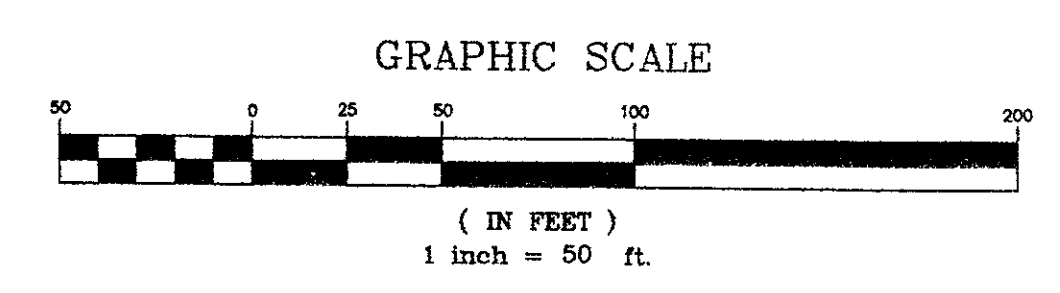
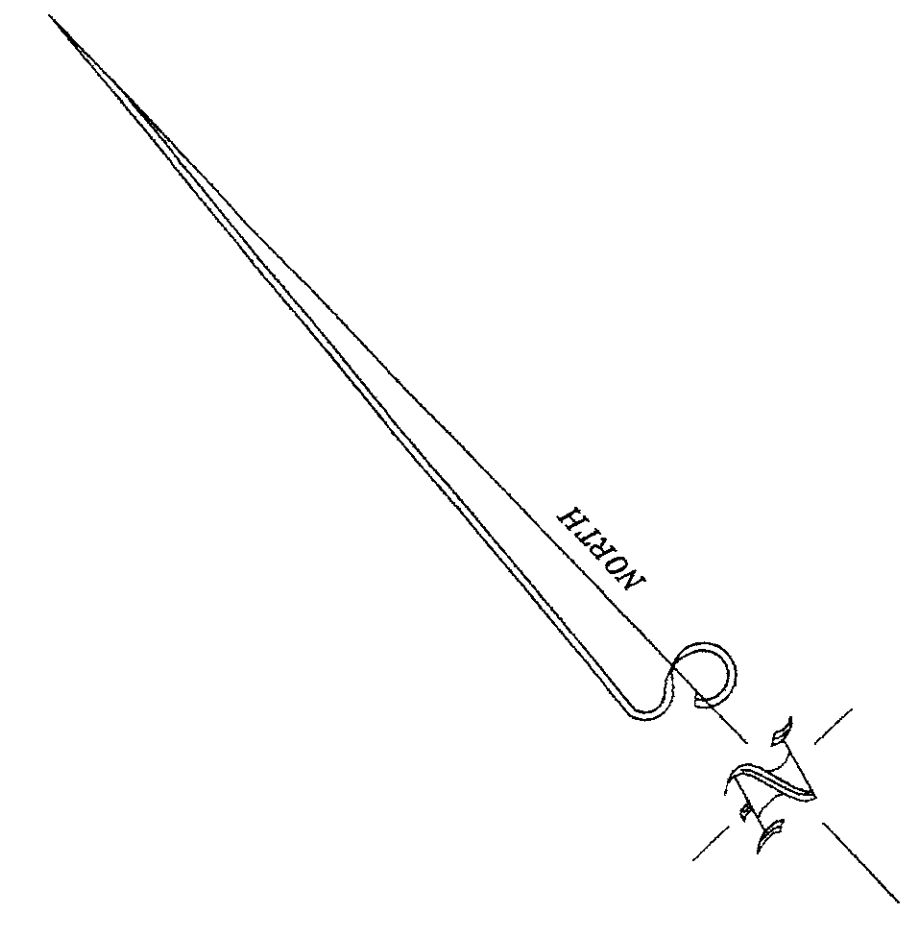
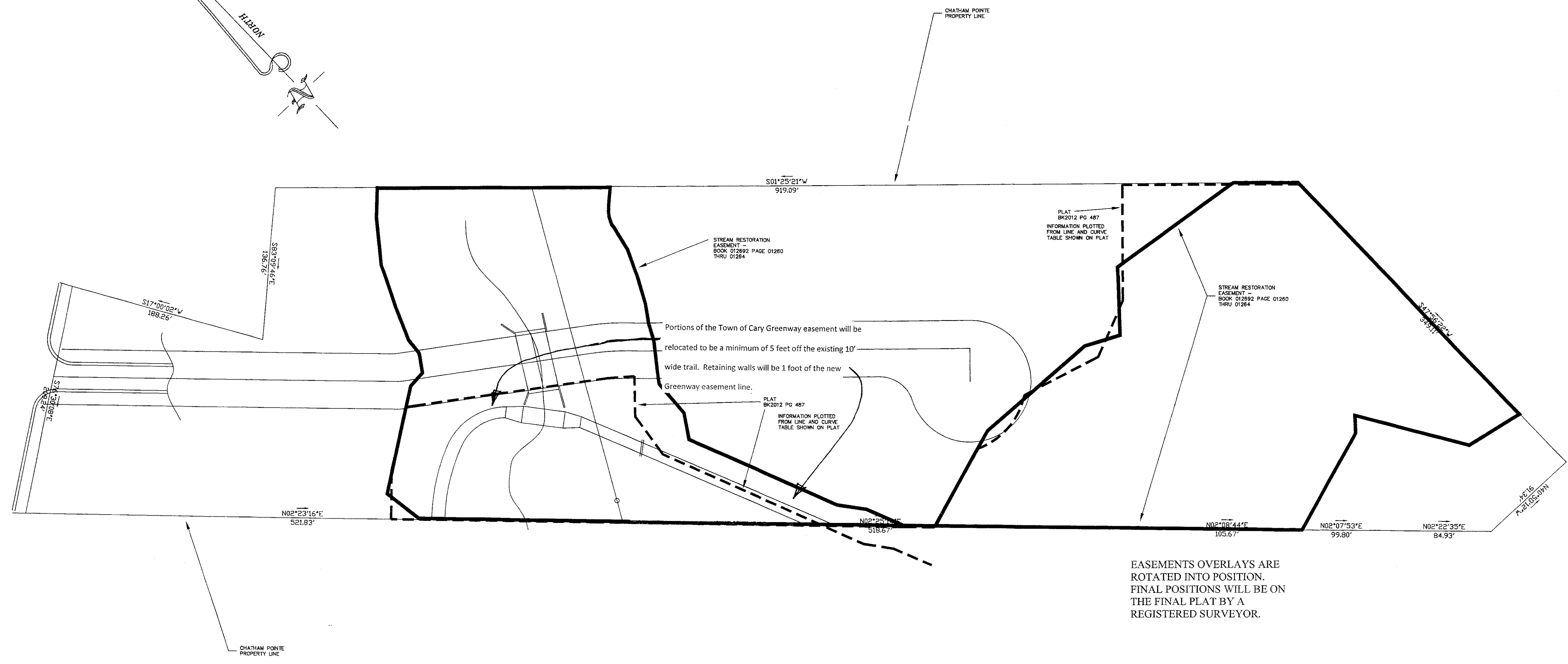
COMBINED
EASEMENTS
ON
PROPERTY
BOUNDARY



1	10-20-14	ADDED, NOTE	FHB
2	12-16-14	CHANGED EASEMENT	FHB
3	1-28-15	EASEMENTS	FHR

DRAWN BY: FB
CHECKED BY: SF
DATE: 8-24-14
SCALE: NTS
PROJECT NO.: 0360
SHEET NO.:

BES-3



BRUNSSON ENGINEERING SERVICES, P.A.
ENGINEERING CONSULTING PLANNING
36 CHURCHWELL COURT
DURHAM, NC

TELEPHONE 919-544-1159
TELEFAX 919-544-1201

07-SP-038-A
HTE #: 07-0628
APPROVED BY THE TOWN OF CARY
DEVELOPMENT REVIEW COMMITTEE
Planner: *K.A.H.* Date: 16 Apr 2015