

REVISIONS

NO.	DATE	DESCRIPTION

PROJECT NAME

CHEVY'S FRESH MEX

2240 WALNUT ST.
 CARY, NC

OWNER

PROJECT INFORMATION

PROJECT MANAGER	RJB
DRAWN BY	KRM
APPROVED BY	RJB
FILE NAME	CHEVYS-5-10.dwg
PROJECT NUMBER	98208
PLOT DATE	5-10-99

SHEET NAME

DETAIL SHEET

DRAWING SCALE

HORIZONTAL = 1"=30'

DATE

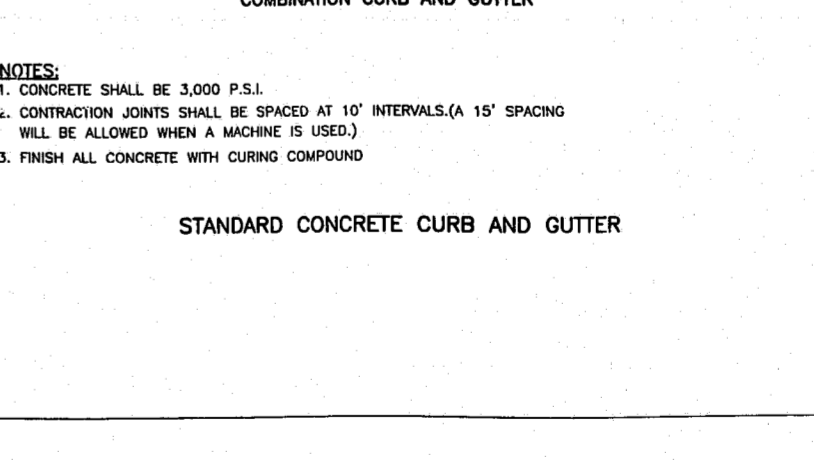
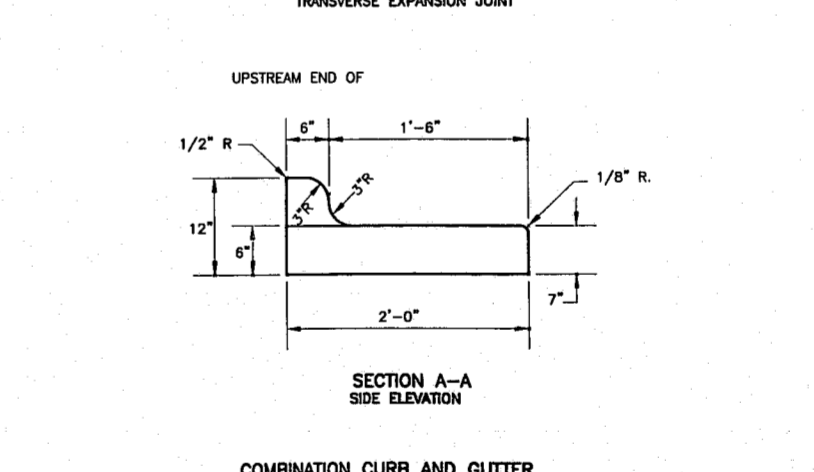
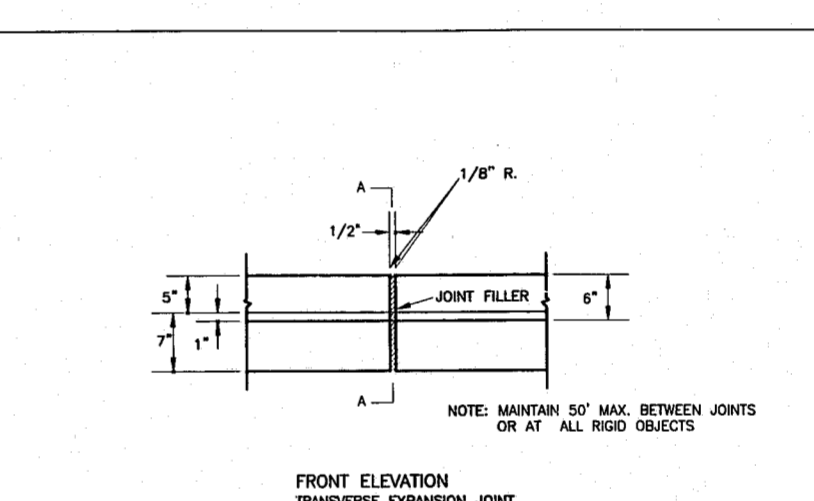
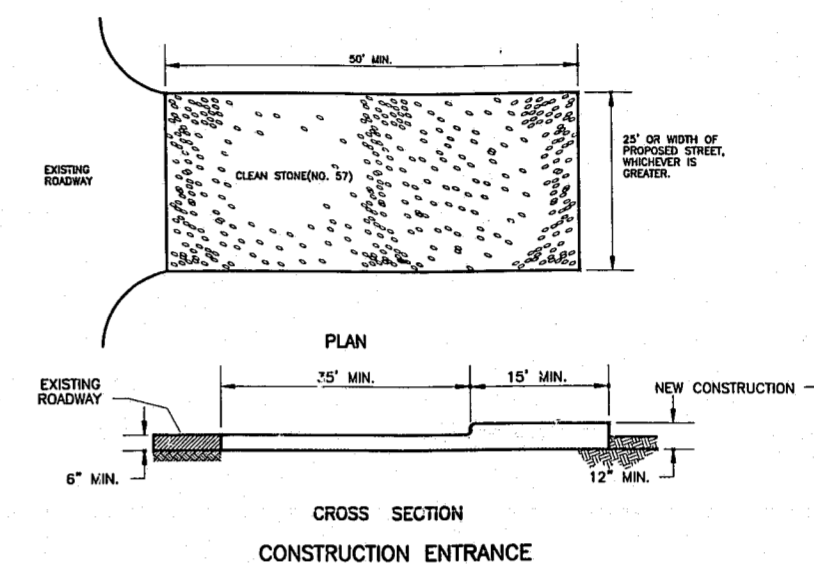
6-14-99

SHEET NUMBER

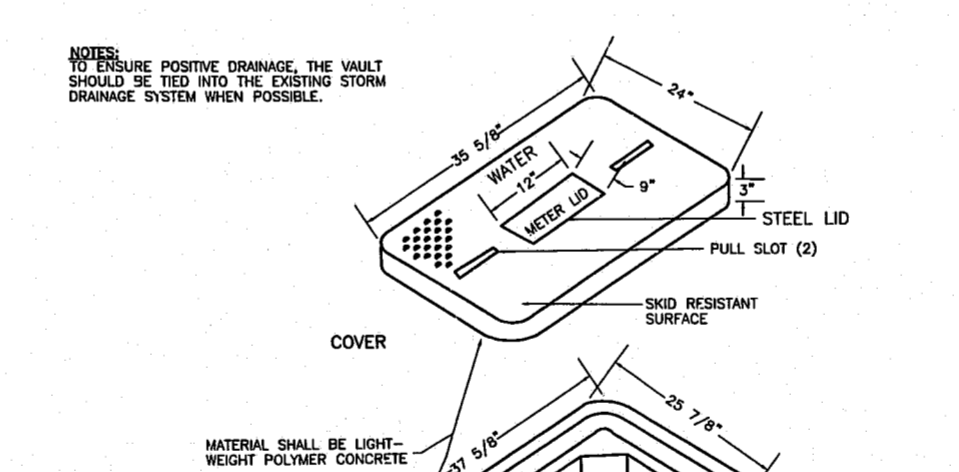
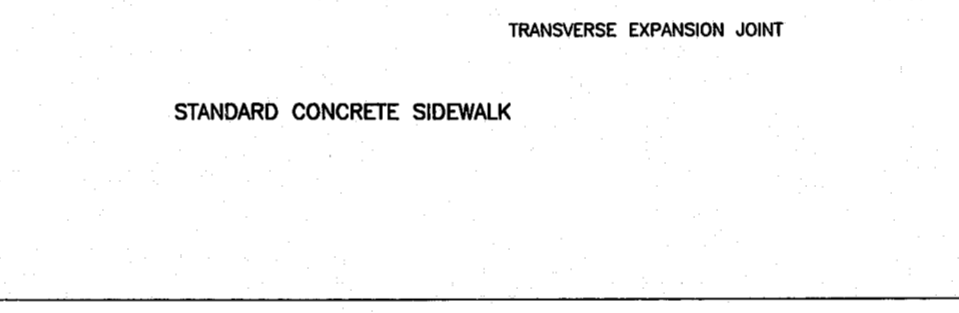
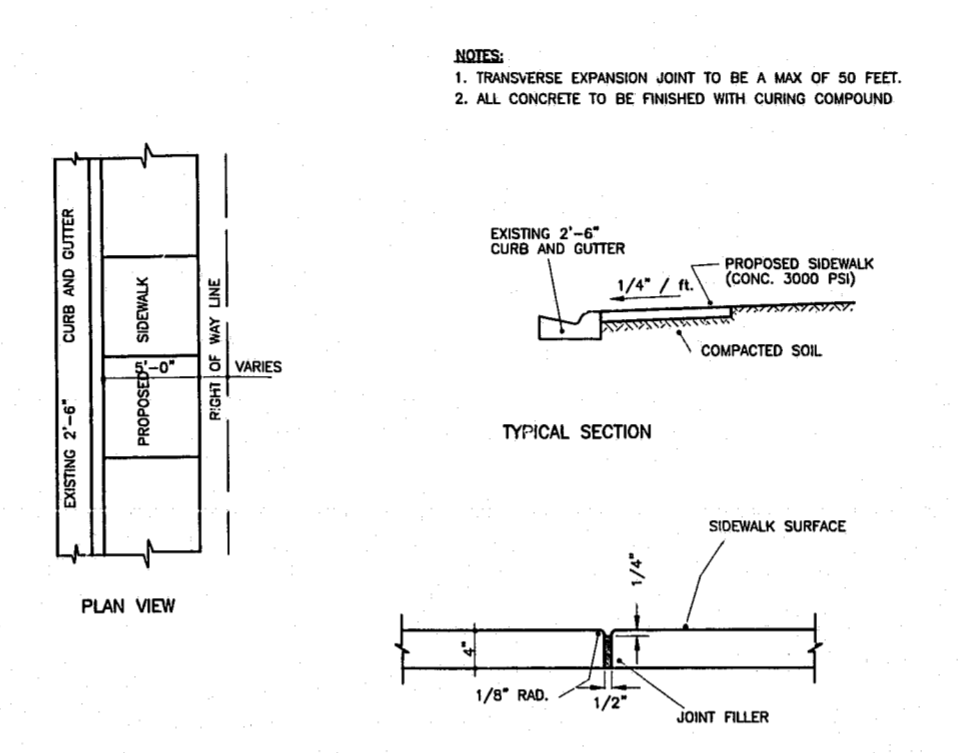
D2

of 6

PRELIMINARY



NOTES:
 1. CONCRETE SHALL BE 3,000 P.S.I.
 2. CONTRACTION JOINTS SHALL BE SPACED AT 10' INTERVALS. (A 15' SPACING WILL BE ALLOWED WHEN A MACHINE IS USED.)
 3. FINISH ALL CONCRETE WITH CURING COMPOUND



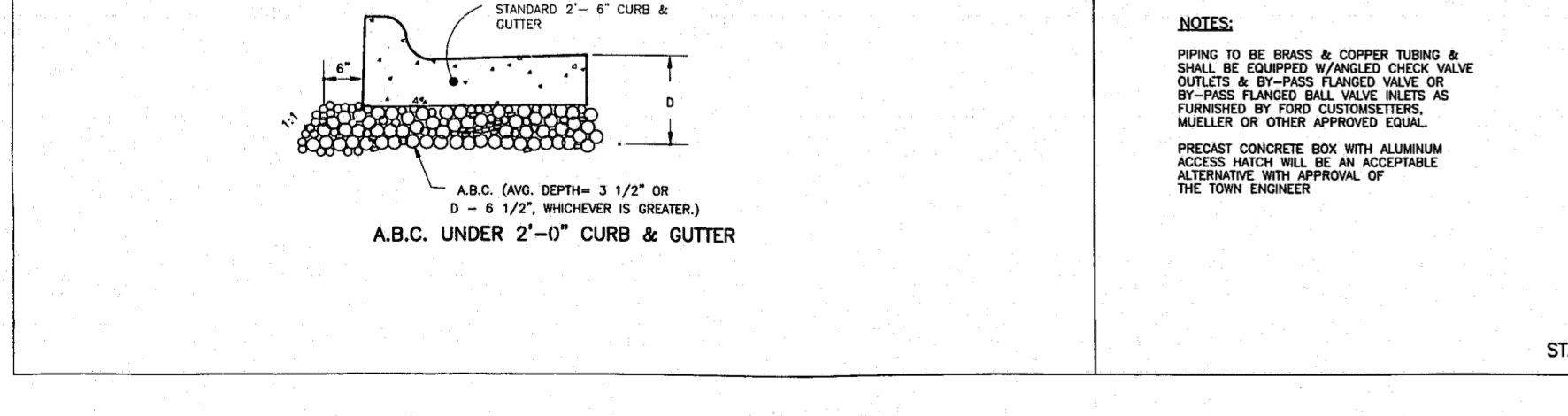
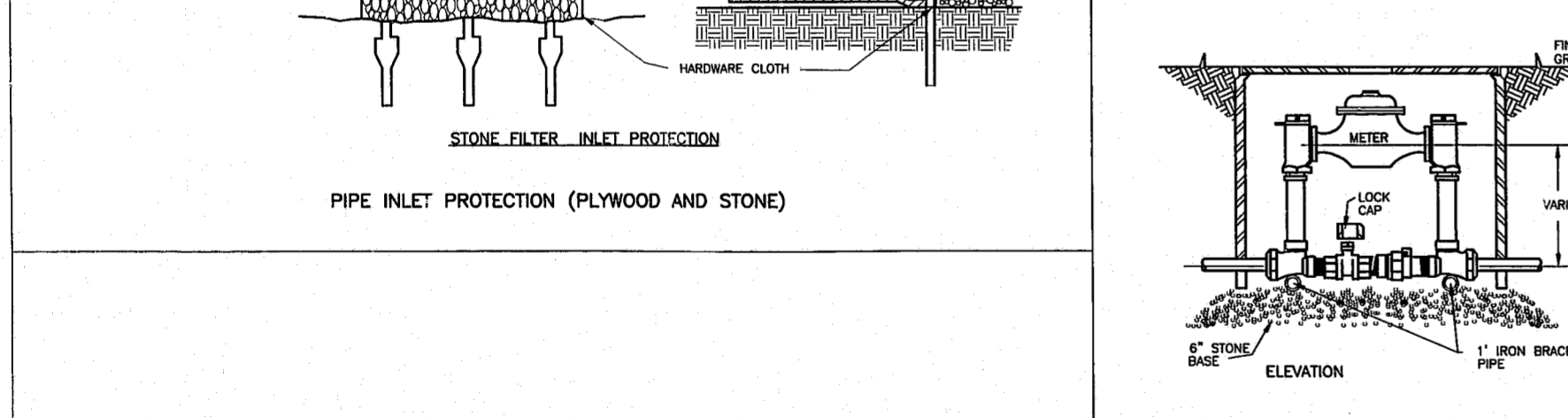
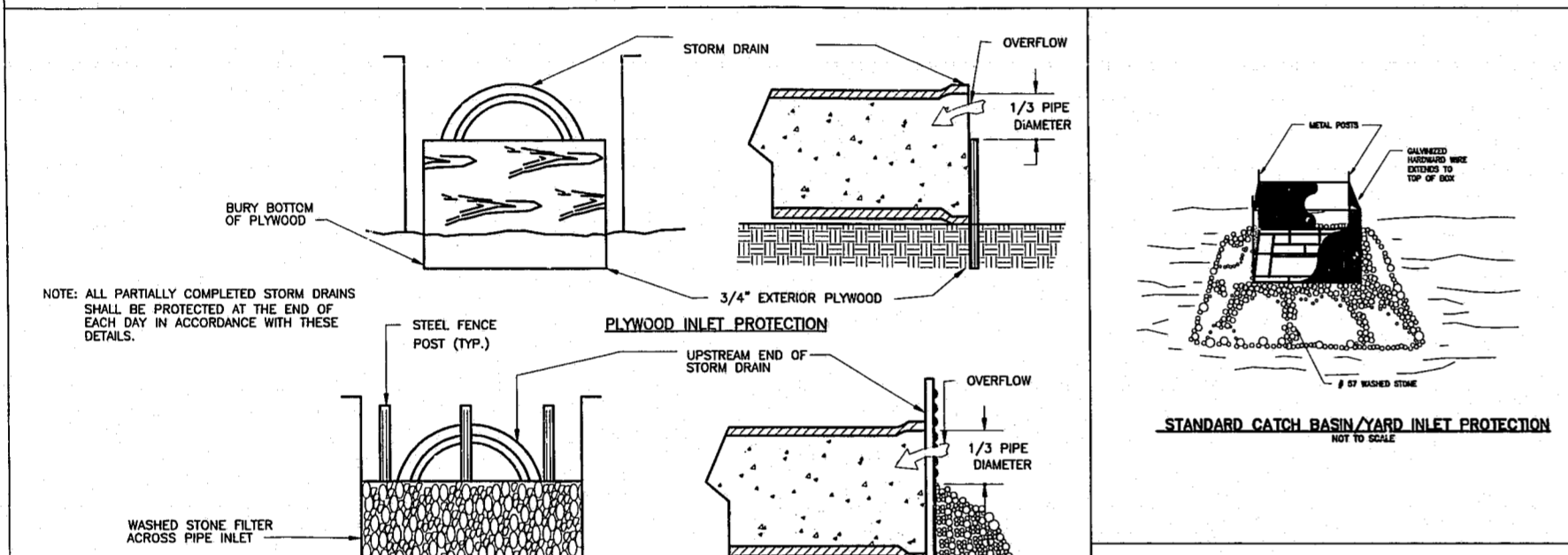
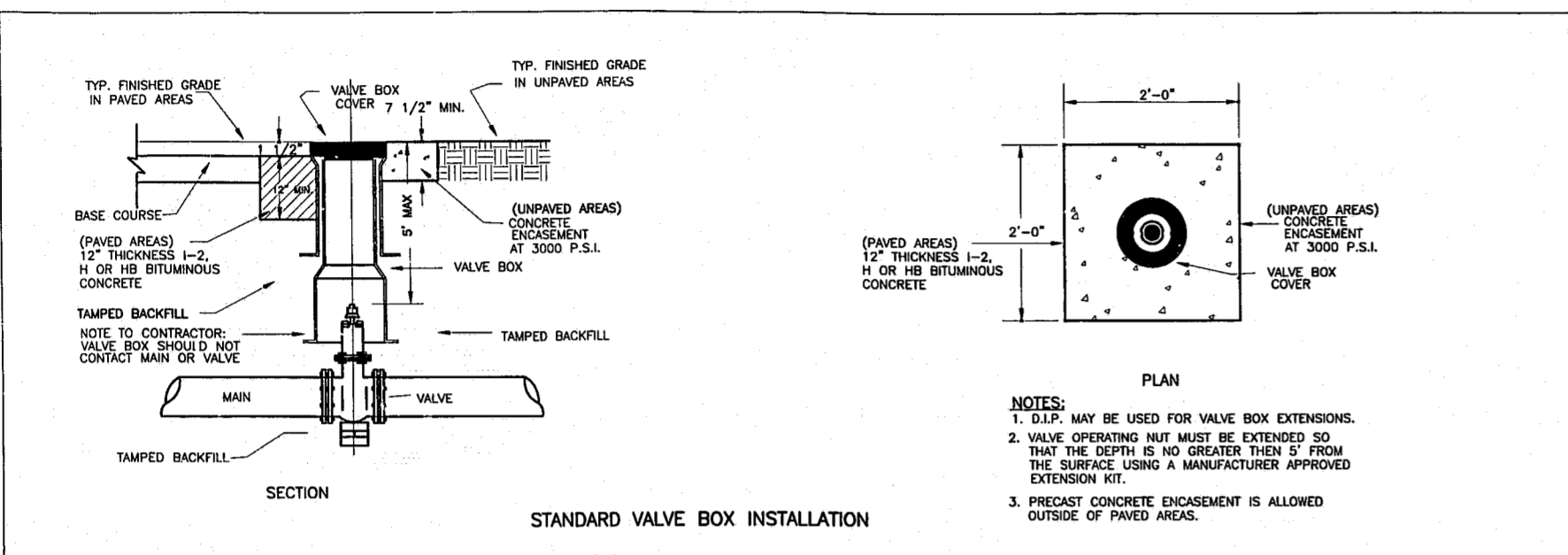
NOTES:
 TO ENSURE POSITIVE DRAINAGE, THE VAULT SHOULD BE TIED INTO THE EXISTING STORM DRAINAGE SYSTEM WHEN POSSIBLE.

NOTES:
 PIPING TO BE BRASS & COPPER TUBING & SHALL BE EQUIPPED W/ ANGLED CHECK VALVE OUTLETS & BY-PASS FLANGED VALVE OR BY-PASS FLANGED BALL VALVE INLETS AS FURNISHED BY FORD CUSTOMSETTERS, MUELLER OR OTHER APPROVED EQUAL.
 PRECAST CONCRETE BOX WITH ALUMINUM ACCESS HATCH WILL BE AN ACCEPTABLE ALTERNATIVE WITH APPROVAL OF THE TOWN ENGINEER

NOTES:
 1. D.I.P. MAY BE USED FOR VALVE BOX EXTENSIONS.
 2. VALVE OPERATING NUT MUST BE EXTENDED SO THAT THE DEPTH IS NO GREATER THEN 5" FROM THE SURFACE USING A MANUFACTURER APPROVED EXTENSION KIT.
 3. PRECAST CONCRETE ENCASEMENT IS ALLOWED OUTSIDE OF PAVED AREAS.

NOTES:
 1. TRANSVERSE EXPANSION JOINT TO BE A MAX OF 50 FEET.
 2. ALL CONCRETE TO BE FINISHED WITH CURING COMPOUND

NOTES:
 1. CONCRETE SHALL BE 3,000 P.S.I.
 2. CONTRACTION JOINTS SHALL BE SPACED AT 10' INTERVALS. (A 15' SPACING WILL BE ALLOWED WHEN A MACHINE IS USED.)
 3. FINISH ALL CONCRETE WITH CURING COMPOUND



NOTES:
 ALL PARTIALLY COMPLETED STORM DRAINS SHALL BE PROTECTED AT THE END OF EACH DAY IN ACCORDANCE WITH THESE DETAILS.

NOTES:
 1. D.I.P. MAY BE USED FOR VALVE BOX EXTENSIONS.
 2. VALVE OPERATING NUT MUST BE EXTENDED SO THAT THE DEPTH IS NO GREATER THEN 5" FROM THE SURFACE USING A MANUFACTURER APPROVED EXTENSION KIT.
 3. PRECAST CONCRETE ENCASEMENT IS ALLOWED OUTSIDE OF PAVED AREAS.

NOTES:
 1. TRANSVERSE EXPANSION JOINT TO BE A MAX OF 50 FEET.
 2. ALL CONCRETE TO BE FINISHED WITH CURING COMPOUND

NOTES:
 1. CONCRETE SHALL BE 3,000 P.S.I.
 2. CONTRACTION JOINTS SHALL BE SPACED AT 10' INTERVALS. (A 15' SPACING WILL BE ALLOWED WHEN A MACHINE IS USED.)
 3. FINISH ALL CONCRETE WITH CURING COMPOUND