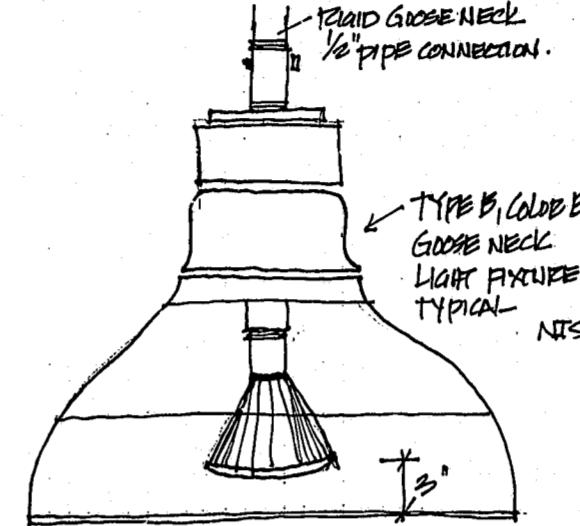
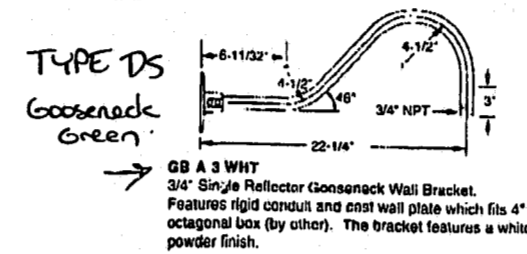
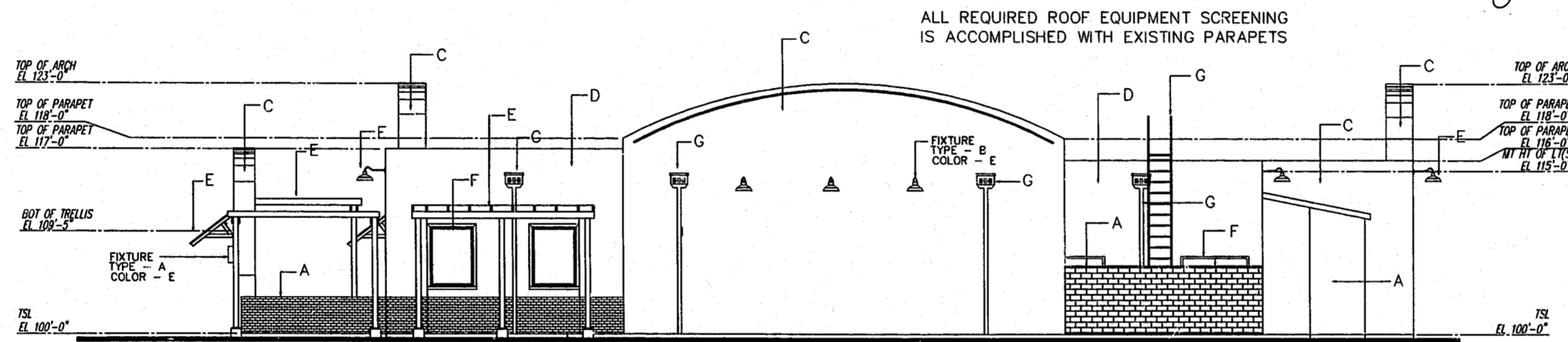


MATERIALS USAGE:

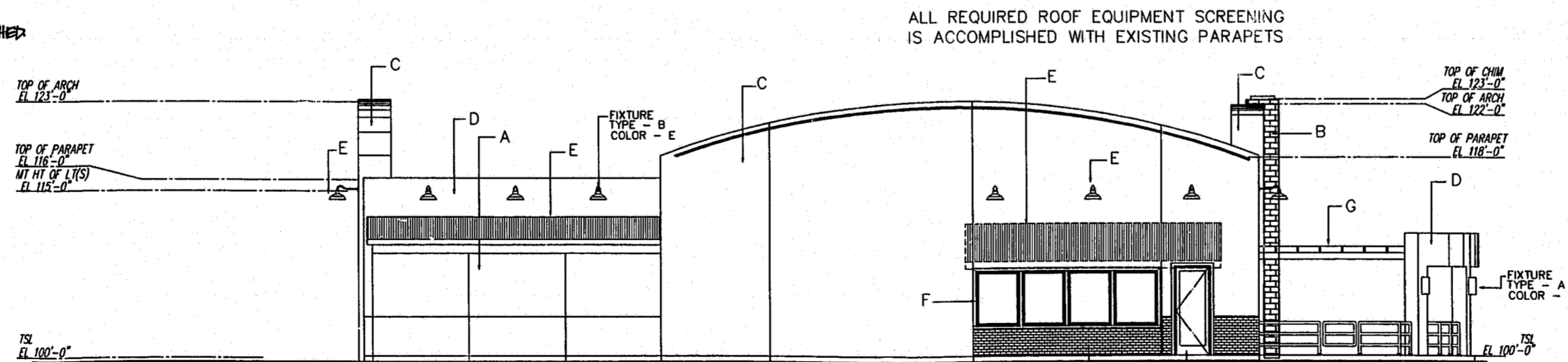
- A = ACMU-1, SPLIT FACE " METROMONT " RUSTIC RED VENEER #46
- B = B-1, BORAL # 521, " BORDEAUX "
- C = P-1, DRYVIT " SPECTRUM BROWN ", # 142
- D = P-2, DRYVIT " VAN DYKE ", # 110
- E = MR-1, AEP-SPAN LILLY, " COLONIAL RED "
- F = SF-1, KAWNEER TRI-FAB 451 DARK BRONZE
- G = BENJAMIN MOORE # BM1224 (COLOR TO MATCH-A. ABOVE)



CHEVYS FRESH MEX
JA 7.9.99



RIGHT ELEVATION



REAR ELEVATION

STANDARD DOME
A CLASSIC DOME DESIGN THAT FEATURES ELEGANCE AND TIMELESS SIMPLICITY.

Standard dome fixtures can be ordered in a variety of sizes, colors, mounting configurations, light sources and with a wide selection of accessories. (See ordering information below.)

- * Lamp Options - Designed to accommodate Incandescent, Compact Fluorescent, and High Intensity Discharge lamps.
- * Mounting - Cast Aluminum hub tapped for 3/4" NPT conduit. Available factory pre-wired with 90' leads or white or black conduit and canopy. (NOTE: 36 and 42 inch fixtures not available with cord sets.)
- * Reflector - Heavy-duty spun galvanized steel construction with polyester powder finish for long life durability.
- * Sockets - Incandescent (rated 300 Watts/600 Volt) and HID (HVM Pulse rated) on medium base possible. Compact Fluorescent sockets feature simple push-in thermoplastic design for ease of lamping (13 Watt to 65-watt).
- * Ballasts - Compact Fluorescent High Power Factor Electronic Ballast. HID Variators, Fluorescent High Power Factor. Specialty types from ordering guide below.
- * Warranty - 2 Full Years.

Model	Height	Color	Material	Weight	Notes
RD 100	100"	White	Aluminum	150 lbs	Standard dome fixture with 100" height.
RD 120	120"	White	Aluminum	200 lbs	Standard dome fixture with 120" height.
RD 200	200"	White	Aluminum	400 lbs	Standard dome fixture with 200" height.

General Notes
Paint Finishes
Light Fixture Spec's.
Landscape Lighting

CHEVYS FRESH MEX
OWNER:
MEXMASTERS OF CARY, INC.
2665 OAK RIDGE CT.
FT. MYERS, FL 33901
1.727.535.6650

1	Finishes	7/8
No.	Revision/Issue	Date

Firm Name and Address
j. MARRONE, INC.
1914 OAKDALE LN., N.
CLEARWATER, FL 33764
1.727.535.6650
1.727.535.6670 FACSIMILE

Project Name and Address
CENTRUM
AT
CROSSROADS

Project	Sheet
Date 6/10/99	A2.1
Scale 1/8" = 1'-0"	