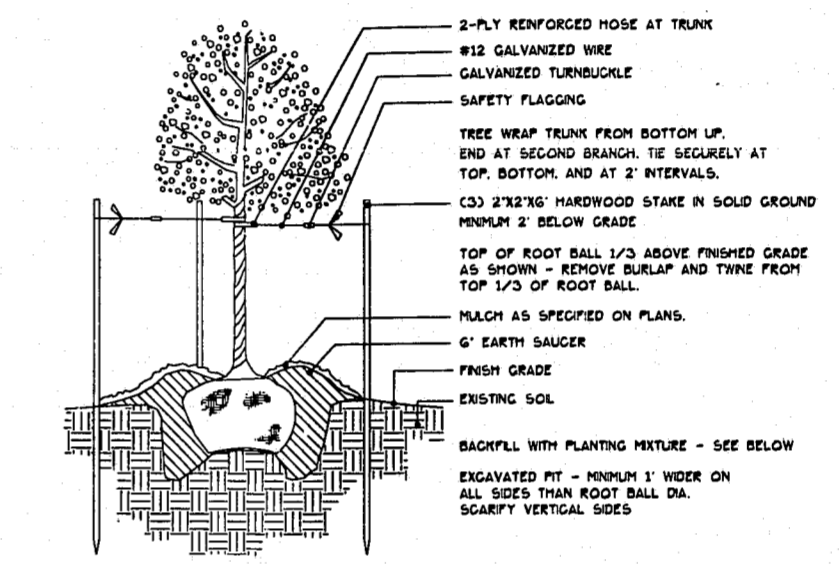


PLANTING MIXTURE: PLANTING MIXTURE SHALL BE (2) TWO PARTS APPROVED OFF SITE TOPSOIL (2) TWO PARTS EXISTING SUITABLE SOIL AND (1) ONE PART SCREENED FINE BARK THOROUGHLY MIXED. ADD 20-15-10 FERTILIZER IN EACH PLANT PIT AT MANUFACTURER'S RECOMMENDED RATE.

**SHRUB PLANTING DETAIL**



PLANTING MIXTURE: PLANTING MIXTURE SHALL BE (2) TWO PARTS APPROVED OFF SITE TOPSOIL (2) TWO PARTS EXISTING SUITABLE SOIL AND (1) ONE PART SCREENED FINE BARK THOROUGHLY MIXED. ADD 20-15-10 FERTILIZER IN EACH PLANT PIT AT MANUFACTURER'S RECOMMENDED RATE. STAKE TREES WHEN NEEDED OR DIRECTED BY LANDSCAPE ARCHITECT.

**TREE PLANTING DETAIL**

**PLANTING NOTES:**

KEY REFERS TO PLANT LIST. WHERE THERE IS ONLY A KEY, THE QUANTITY IS ONE. WHERE THE KEY IS PRECEDED BY A NUMBER, THE NUMBER IS THE QUANTITY REQUIRED FOR THE INDICATED PLANT BED. LOCATE PLANTS AND PLANTING BEDS BY USING SCALED DIMENSIONS FROM STREET, PROPERTY LINES, ETC.

ALL PLANTS SHALL MEET OR EXCEED THE MINIMUM STANDARDS SET BY THE U.S.D.A. STANDARD FOR NURSERY STOCK SPONSORED BY THE AMERICAN ASSOCIATION OF NURSEYMEN, INC., WASHINGTON, D.C.

MULCH ALL TREES + PLANTING BEDS AS NOTED ON DRAWING. ALL PLANT GROUPINGS ARE CONSIDERED PLANTING BEDS.

LANDSCAPE CONTRACTOR SHALL VERIFY UTILITY AND STORM DRAINAGE LOCATIONS IN THE FIELD, PRIOR TO BEGINNING CONSTRUCTION.

APPLY PRE-EMERGENT HERBICIDE TO ALL PLANTING BEDS PER MANUFACTURER'S SPECIFICATIONS.

LANDSCAPE CONTRACTOR SHALL SEED AREAS DESIGNATED ON PLAN WITH REBEL FESCUE MIXTURE OR EQUAL. KENTUCKY-31 IS UNACCEPTABLE.

VEGETATION WHICH MAY ENCROACH INTO THE SIGHT TRIANGLES CAUSING OBSTRUCTION, AS DETERMINED BY THE DEVELOPMENT REVIEW GROUP OF THE TOWN OF CARY, SHALL BE REMOVED PRIOR TO ISSUANCE OF FIRST CO.

PLANTS LABELED N.I.C. ARE NOT IN THIS CONTRACT AND ARE A PART OF THE OVERALL CENTRUM APPROVALS AND CONSTRUCTION. THEY ARE LABELED FOR REFERENCE ONLY.

THE OWNERS OF THE PROPERTY AND THEIR AGENTS, HEIRS, OR ASSIGNS SHALL BE RESPONSIBLE FOR THE INSTALLATION, PRESERVATION AND MAINTENANCE OF ALL PLANTING AND PHYSICAL FEATURES SHOWN ON THIS PLAN. THE OWNERS SHALL BE RESPONSIBLE FOR ANNUAL MAINTENANCE OF THE VEGETATION TO INCLUDE BUT NOT LIMITED TO:

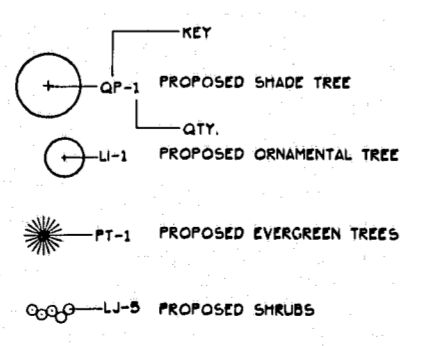
- FERTILIZE ALL PLANTS IN EARLY SPRING, CAZALEAS AFTER BLOOMING), W/ APPROP. FERTILIZER MIX FOR EA. SPECIES.
- PRUNE PLANTS AS NECESSARY TO PROMOTE HEALTHY GROWTH AND UNIFORM APPEARANCE.
- APPLY PESTICIDES AND HERBICIDES PER MANUFACTURER'S RECOMMENDATIONS WHEN PESTIFICATIONS OCCUR.
- MULCH PLANTS AS NECESSARY TO ELIMINATE WEEDS, CONSERVE WATER, AND PROTECT PLANTS FROM HARSH CONDITIONS.
- MOW SEEDED AREAS TO PROMOTE HEALTHY GROWTH OF GRASS SPECIES AND MAINTAIN CURB APPEAL OF PROPERTY.
- PROTECT ROOT ZONES FROM EQUIPMENT, CONSTRUCTION AND RELATED MATERIALS, ETC.
- IRRIGATE PLANTS AT INDUSTRY RECOMMENDED TIMES TO ENSURE HEALTHY GROWTH AND CONSERVATION OF WATER.

FAILURE TO MAINTAIN ALL PLANTINGS IN ACCORDANCE WITH THIS PLAN MAY CONSTITUTE A VIOLATION OF THE UNIFIED DEVELOPMENT ORDINANCE AND MAY RESULT IN FINES.

ALL TREE PROTECTION FENCING SHALL BE MAINTAINED UNTIL ALL SITE WORK IS COMPLETED. THE FENCING SHALL BE REMOVED PRIOR TO THE FINAL SITE INSPECTION FOR THE CERTIFICATE OF OCCUPANCY (CO).

UTILITY EQUIPMENT AND FACILITIES ASSOCIATED WITH ON-SITE ELECTRIC, CABLE, TELEPHONE, GAS OR OTHER SIMILAR UTILITY SHALL BE SCREENED TO THE EXTENT POSSIBLE, WITH EVERGREEN PLANTINGS. PLANTINGS SHALL ALLOW FOR A MINIMUM OF A 5 FOOT CLEARANCE AROUND THE STRUCTURE TO ALLOW FOR ACCESS. ADDITIONALLY, ANY SIDE OF THE STRUCTURE HAVING A DOOR OR A LOCK, THE PLANTINGS SHALL ALLOW FOR A TEN FOOT CLEARANCE. THE AMOUNT OF THE CLEARANCE SHALL ACCOUNT FOR THE SIZE OF THE PLANT MATERIAL AT MATURITY.

**PLANTING LEGEND**



**PLANT LIST**

KEY	QTY.	BOTANICAL NAME	COMMON NAME	SIZE	ROOT	REMARKS
<b>trees</b>						
AR	4	ACER RUBRUM 'OCTOBER GLORY'	OCTOBER GLORY MAPLE	3-3 1/2" CAL.	B&B	FULL
LI	14	LAGERSTROEMIA INDICA 'MUSKOGEE'	MUSKOGEE GRAPE MYRTLE	10" HT.	B&B	SPECIMEN
QP	4	QUERCUS PHELLOS	WILLOW OAK	3-3 1/2" CAL.	B&B	FULL
<b>shrubs</b>						
IBN	60	ILEX CORNUTA 'BURFORDI NANA'	DWARF BURFORD HOLLY	24-30" HT.	B&B	FULL
INS	4	ILEX X 'NELLIE STEVENS'	NELLIE STEVENS HOLLY	6-7 HT.	B&B	FULL
PL	43	PRUNUS LAUROCERCUS 'ZABELIANA'	ZABEL LAUREL	3-4' HT.	B&B	FULL
IB	8	ILEX CORNUTA 'BURFORDII'	BURFORD HOLLY	5-6' HT.	B&B	FULL
RI	33	RAPHOLEPSIS INDICA 'WHITE SNOW'	WHITE INDIAN HAWTHORNE	24-30" HT.	B&B	FULL
EJ	4	MYRTICA CERIFERA	WAX MYRTLE	24-30" HT.	B&B	FULL
ICC	28	ILEX CORNUTA 'COMPACTA'	COMPACTA HOLLY	24-30" HT.	B&B	FULL
<b>groundcovers and grasses</b>						
JC	24	JUNIPERUS CHINENSIS 'SARGENTI VIRDIS'	SARGENTS GREEN JUNIPER	24-30" SPD.	#3 CONT.	FULL

**ETd**  
ELAM, TODD & FAMBROSI, PA

Urban Planning /  
Landscape Architecture

2601 Weston Parkway  
Suite 203  
Cary, North Carolina 27513  
919/678-1071  
etd@bellsouth.net



Drawn By: TMB  
Checked By: DED  
Date: 10 MAY 1999  
Proj#: 9905003

Revisions  
14 JUNE 1999  
12 JULY 1999

**Chevys**  
FRESH MEX®

210 WALNUT STREET  
CARY, NORTH CAROLINA

**THE CENTRUM AT  
CROSSROADS**

**BUCKLEY  
SHULER  
PROPERTIES, INC.**

4244 INTERNATIONAL PKWY.  
SUITE 134  
ATLANTA, GA. 30354  
TEL (404) 361-6000  
FAX (404) 361-4531

**ENGINEER:**

**THE ROSE GROUP**  
621-101 HUTTON STREET  
RALEIGH, NC 27606  
919/829/0555

**PLANTING PLAN**

Sheet

L-1

FOR REVIEW ONLY- NOT FOR CONSTRUCTION

L:\projects\centrum\outparcels\chevys\7-12-99\shultr\c1\c-p\planting.dwg Mon Jul 12 14:43:11 1999