



Kimley-Horn

ADDITION TO CORPORATE OFFICES CARY, NC



TITLE GRADING, EROSION CONTROL & STORM DRAINAGE PLAN

ISSUE DATE 11 MAY 1989 SITE PLAN APPROVAL 10 MAY 1989 - REVISED PER PER TOWN OF CARY 19 MAY 1989 - REVISED PER TOWN OF CARY 12 JUNE 1989 - PER CONENT 28 JUNE 1989 - REVISED

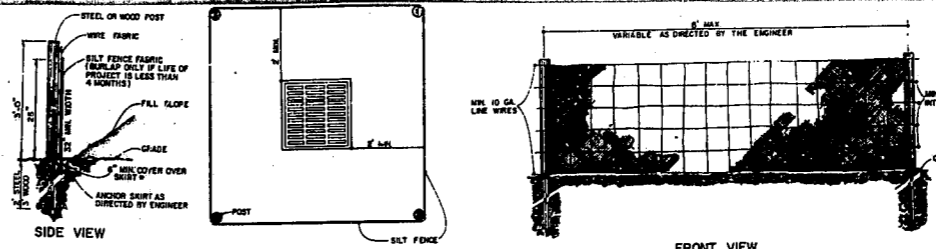
PROJECT NO 1592.05

DRAWN BY BAS

CHECKED BY PAB

FOR CONSTRUCTION

L-3

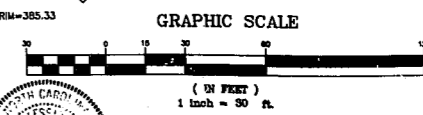


STANDARD TEMPORARY SILT FENCE

- SEQUENCE OF OPERATIONS
1. OBTAIN GRADING PERMIT FROM TOWN OF CARY ENGINEERING DEPARTMENT.
2. ACCOMPLISH TIMBERING AND CLEARING OPERATIONS.
3. INSTALL PERIPHERAL EROSION CONTROL DEVICES INCLUDING STORED ACCESS PAD.
4. BEGIN GRADING OPERATIONS WHILE SIMULTANEOUSLY INSTALLING EROSION AND SEDIMENTATION DEVICES AT EARLIEST TIME PRACTICABLE.
5. SILT FENCE TO BE INSTALLED WHEREVER FILLING OCCURS.
6. INSTALL STORM DRAINAGE PIPING, STRUCTURES, SILT FENCES AMONG STRUCTURES AND TEMPORARY SEDIMENT TRAPS.
7. SEDIMENT TRAPS ARE TO BE PLACED AT ALL POINTS OF STORM WATER RELEASE.
8. DRAIN WATER AND SEDIMENT INSTALLATIONS, CURB AND GUTTER CONSTRUCTION.
9. PLACE STONE BASE COURSE ON ALL AREAS TO BE PAVED.
10. SEED ALL DISTURBED AREAS AS SOON AS FINAL GRADE IS ATTAINED.
11. MAINTAIN SEDIMENT TRAPS UNTIL DISTURBED AREAS ARE STABILIZED, ONCE STABILIZATION IS DEFINITIVE, REMOVE SEDIMENT TRAPS AND REPLACE WITH RIPRAP DISSEMINATION PADS.

SEEDING AND MULCHING
Seeding and Mulching shall be done immediately behind construction. All disturbed areas shall be dressed to a depth of 1/2 inch. The top 2 inches shall be pulverized to provide a uniform seedbed. Agricultural lime shall be applied at the rate of 93 lbs./1000 sq. ft. immediately before planting. Grass seed shall be applied at the rates outlined in Tables 4.1 and 4.2 sec 2J of the specifications.
5-10-10 fertilizer shall be applied to all disturbed areas at a rate of 21 lbs./1000 sq. ft. mulching shall consist of small grain straw applied at a rate of 70 lbs./1000 sq. ft. Mulched areas shall be tacked with asphalt or other approved method sufficient to hold the straw in place. 150 to 200 gallons per ton of straw.
If active construction ceases in any area for more than 30 days all disturbed areas must be seeded, and mulched, and tacked.

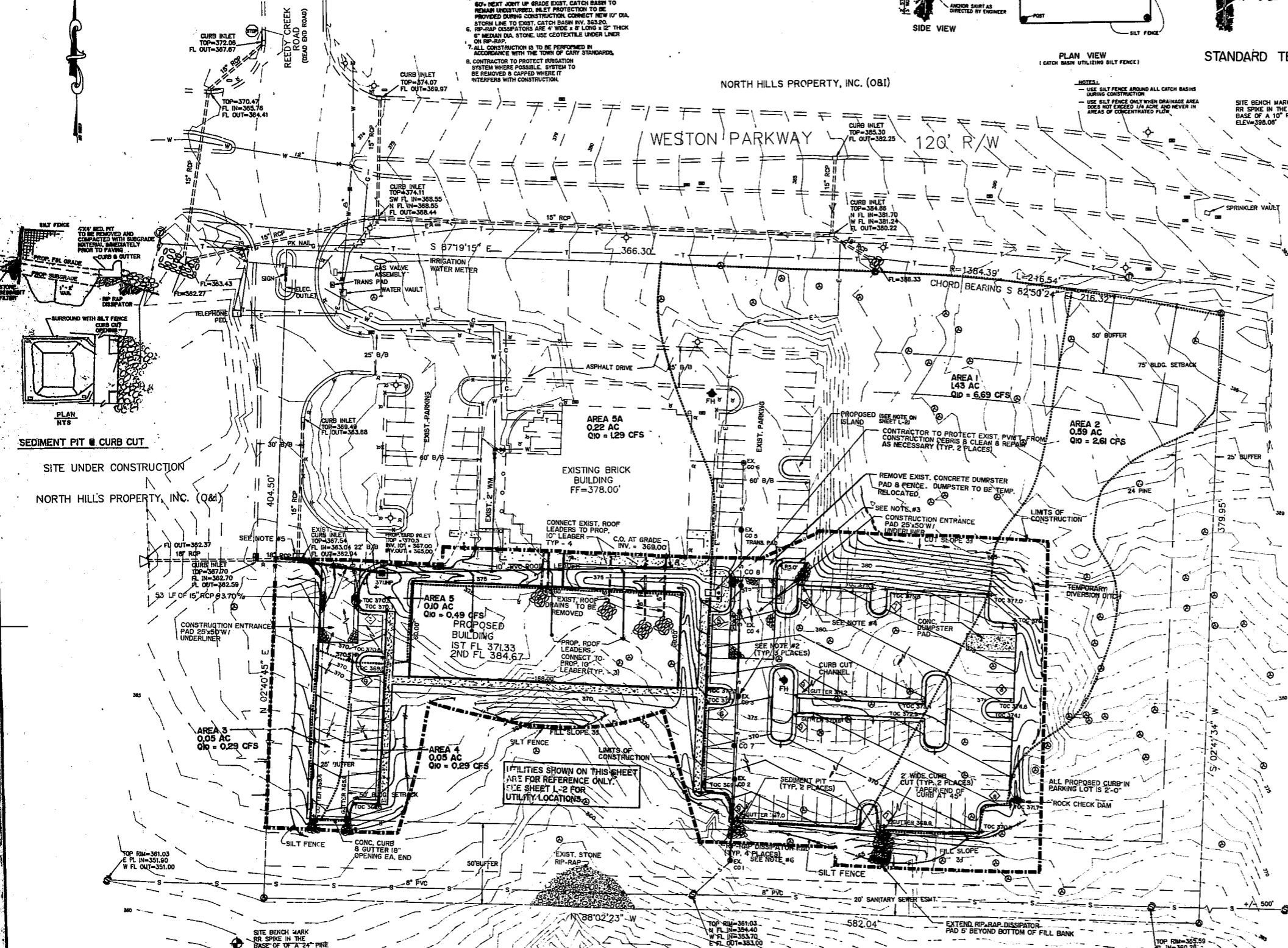
LEGEND table with symbols for typical tree & size, water valve, fire hydrant, water meter, light standard, sprinkler head, irrigation, property corner, street sign, rock rip-rap, sanitary sewer clean out, telephone manhole, sanitary sewer manhole, concrete, flared end section, ductile iron pipe, typical elevation at top back curb, underground electric line, underground water line, underground gas line, underground telephone line, 6' high wood fence, sanitary sewer, buried coop/fer. l.u., storm sewer, spill gutter, exist. contours, prop. contours, drainage divide, proposed parking spaces.



- NOTES:
1. ROOF LEADER LINES ARE TO BE INTERCEPTED WITH 10" PVC LATERAL USE 6" OR 8" SADDLE AS REQD. FOR EACH LINE. GRATE TOP CATCH BASIN TO BE PLACED OVER EXIST. ROOF LEADER AND TO BE INSTALLED AT EAST END OF 10" PVC AND TO BE SET TO GRADE.
2. EXIST. SAN. SWR. CLEANOUTS ARE CI RISER PIPES. CONTRACTOR TO REMOVE & SET NEW CLEANOUT PLUG AT FINISHED GRADE. SEE DETAIL L-4 TO BE SET BY 2"X2" THICK CONCRETE ENCASEMENT TO STONE BASE. AND SHALL HAVE RECESSED BRASS PLUG.
3. BAY CUT EDGE OF PAVEMENT 8" FROM EXIST. EDGE OF PAVEMENT SQUARE TO BACK EDGE. REMOVE PAVEMENT EDGE & PLACE 4" C & G CURB WITH BACK CURB.
4. PROVIDE 8" MEDIAN STONE RIP-RAP AT END OF EXIST. SWALE. PROVIDE FOR FLOW OVER PROPOSED CURB.
5. REMOVE EXIST. C & G FROM CATCH BASIN TO POINT 8" FROM EXIST. JUMP UP GRADE EXIST. CATCH BASIN TO REMAIN UNDISTURBED. INLET PROTECTION TO BE PROVIDED DURING CONSTRUCTION. CONNECT NEW 10" DIA. STORM LINE TO EXIST. CATCH BASIN BY 3/4" DIA. RIP-RAP DISSEMINATORS ARE 4" WIDE & 8" LONG & 12" THICK OF MEDIAN DIA. STONE. USE GEOTEXTILE UNDER LINDER ON RIP-RAP.
7. ALL CONSTRUCTION IS TO BE PERFORMED IN ACCORDANCE WITH THE TOWN OF CARY STANDARDS.
8. CONTRACTOR TO PROTECT IRRIGATION SYSTEM WHERE POSSIBLE. SYSTEM TO BE REMOVED & CAPPED WHERE IT INTERFERES WITH CONSTRUCTION.

NORTH HILLS PROPERTY, INC. (081)

WESTON PARKWAY 120' R/W



TOTAL DENUED AREA = 1.64 ACRES

