



Kimley-Horn

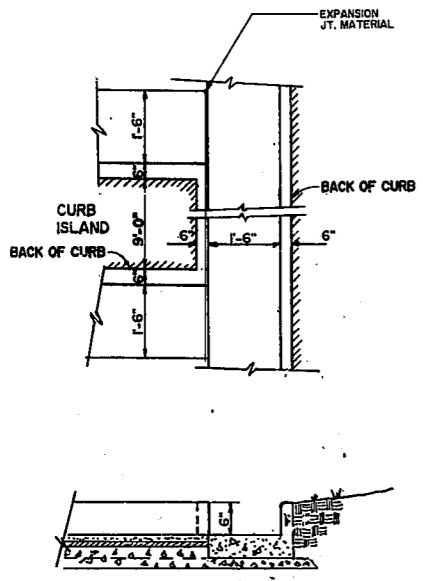
ADDITION TO CORPORATE OFFICES CARY, NC



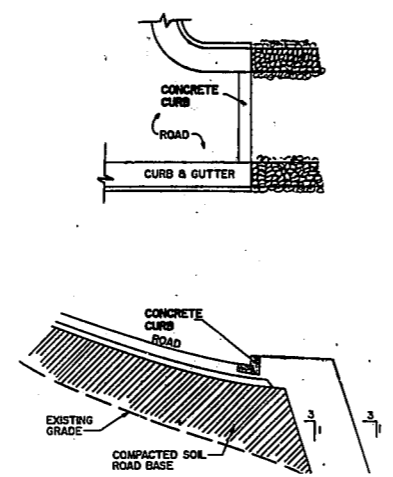
TITLE DETAILS

ISSUE DATE  
1 MAY 1981 SITE PLAN APPROVAL  
14 MAY 1981 - REVISED PER TOWN OF CARY  
12 JUNE 1981 - FOR CONST.  
28 JUNE 1981 - REVISED

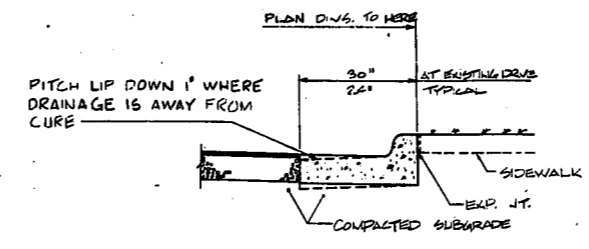
PROJECT NO 1592.05  
DRAWN BY MAY  
CHECKED BY PAB  
FOR CONSTRUCTION



**CURB CUT DETAIL**  
NTS



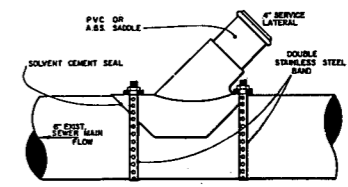
**END OF PARKING DETAIL**  
NTS



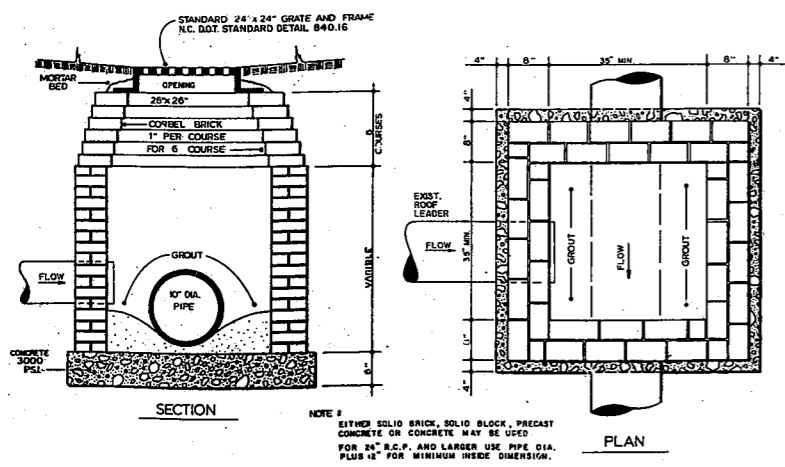
**CURB & GUTTER DETAIL**  
NTS

**STORM SEWER NOTE:**  
USE SAME CONDITION FOR EXISTING ROOF LEADER CONNECTION TO PROPOSED 10" PVC DRAIN LINE

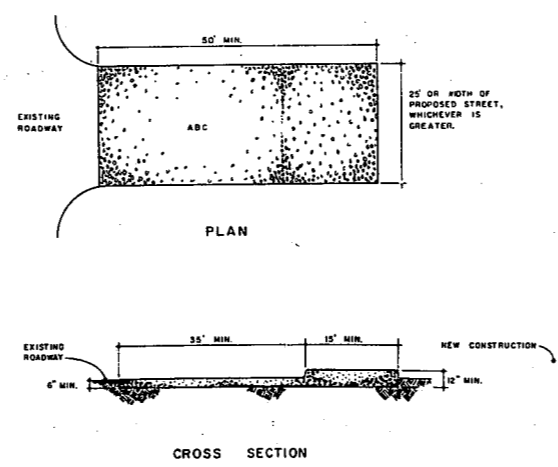
NOTE: PVC SOLVENT CEMENT SHALL BE USED FOR PVC SADDLES.  
ABS SOLVENT CEMENT SHALL BE USED FOR ABS SADDLES.



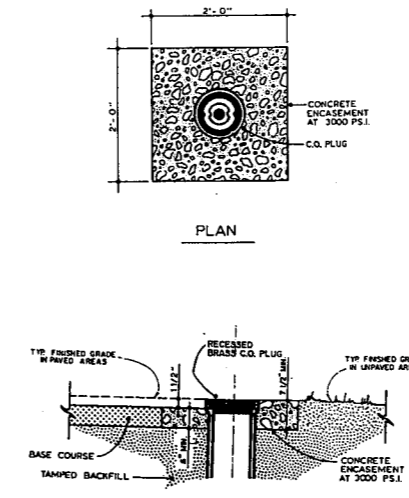
**SANITARY SEWER LATERAL DETAIL**  
NTS



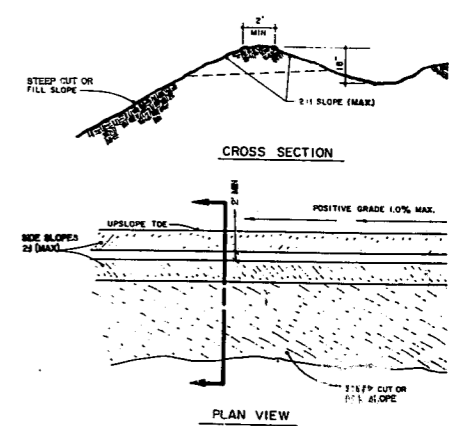
**YARD INLET W/GRATE & FRAME DETAIL**  
NTS



**CONSTRUCTION ENTRANCE DETAIL**  
NTS



**C.O. PLUG DETAIL**  
NTS



**DIVERSION DITCH**  
NTS

