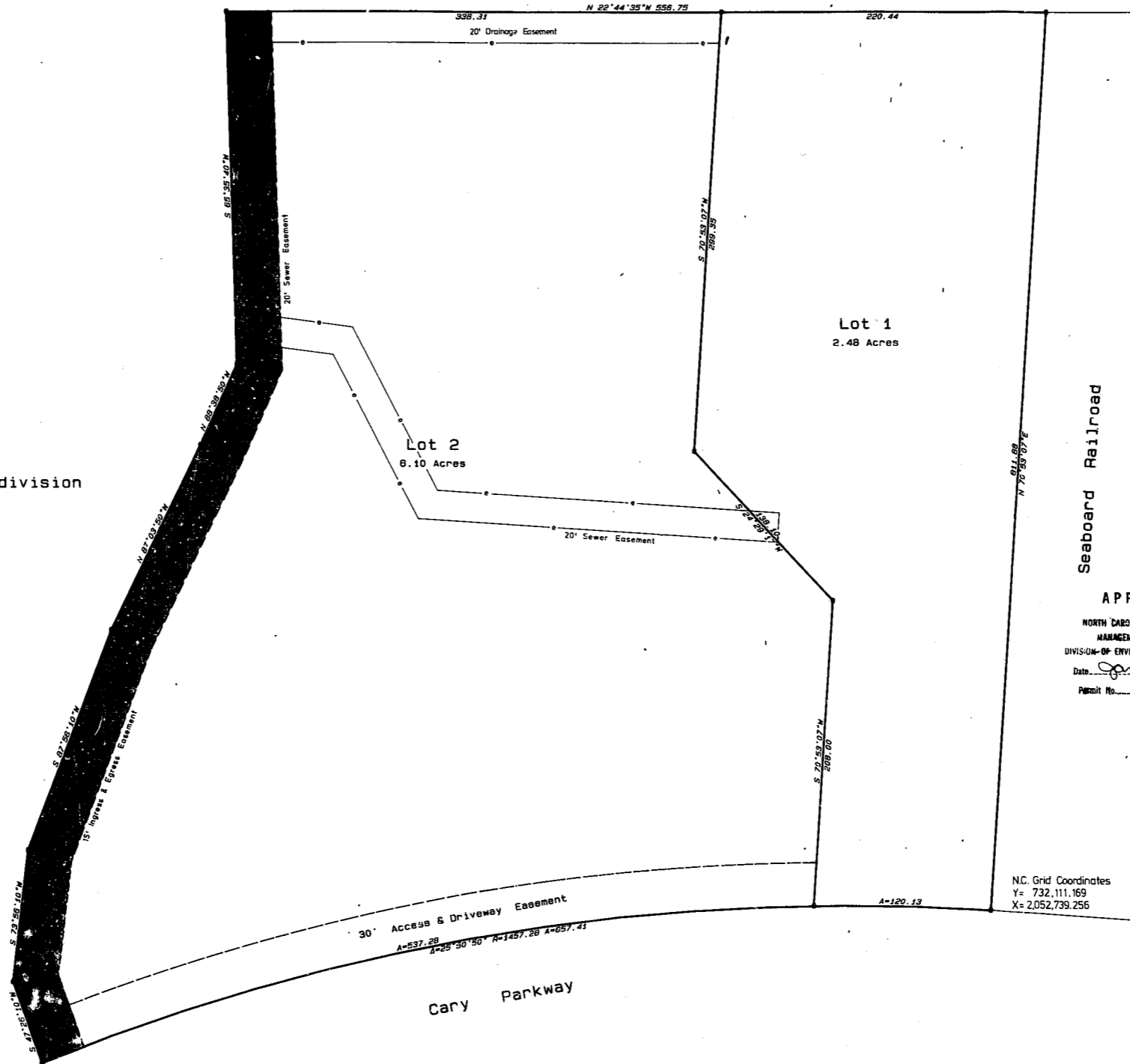


Now or Formerly  
Five Incorporated  
I-1 Zoning

Kilarney Woods Subdivision  
R-12 Zoning

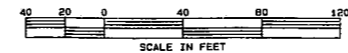
Now or Formerly  
Wachovia Bank and Trust Co.  
I-1 Zoning



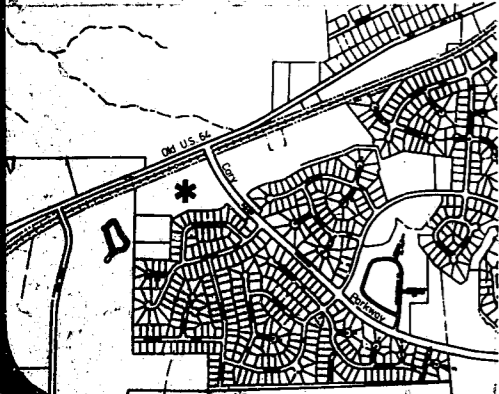
Seaboard Railroad

APPROVED  
NORTH CAROLINA ENVIRONMENTAL  
MANAGEMENT COMMISSION  
DIVISION OF ENVIRONMENTAL MANAGEMENT  
Date: Sept 30, 1983  
Permit No. 9950

N.C. Grid Coordinates  
Y= 732,111.169  
X= 2,052,739.256



Vicinity Map



RECEIVED  
NOV 2 1983  
PERMITS & ENGINEERING

William G. Daniel & Associates  
CONSULTING ENGINEERS  
1152 Executive Circle, Suite 201  
Cary, North Carolina 27511



PROJECT  
COLONIAL SELF STORAGE  
Cary, North Carolina

DATE  
September '83

SCALE  
1" = 40'

SHEET  
1  
OF

DRAWN BY  
Styers

REVISIONS  
1. As Shown  
2. As Shown  
3. As Shown