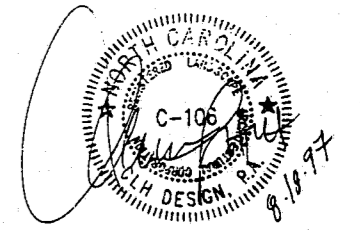
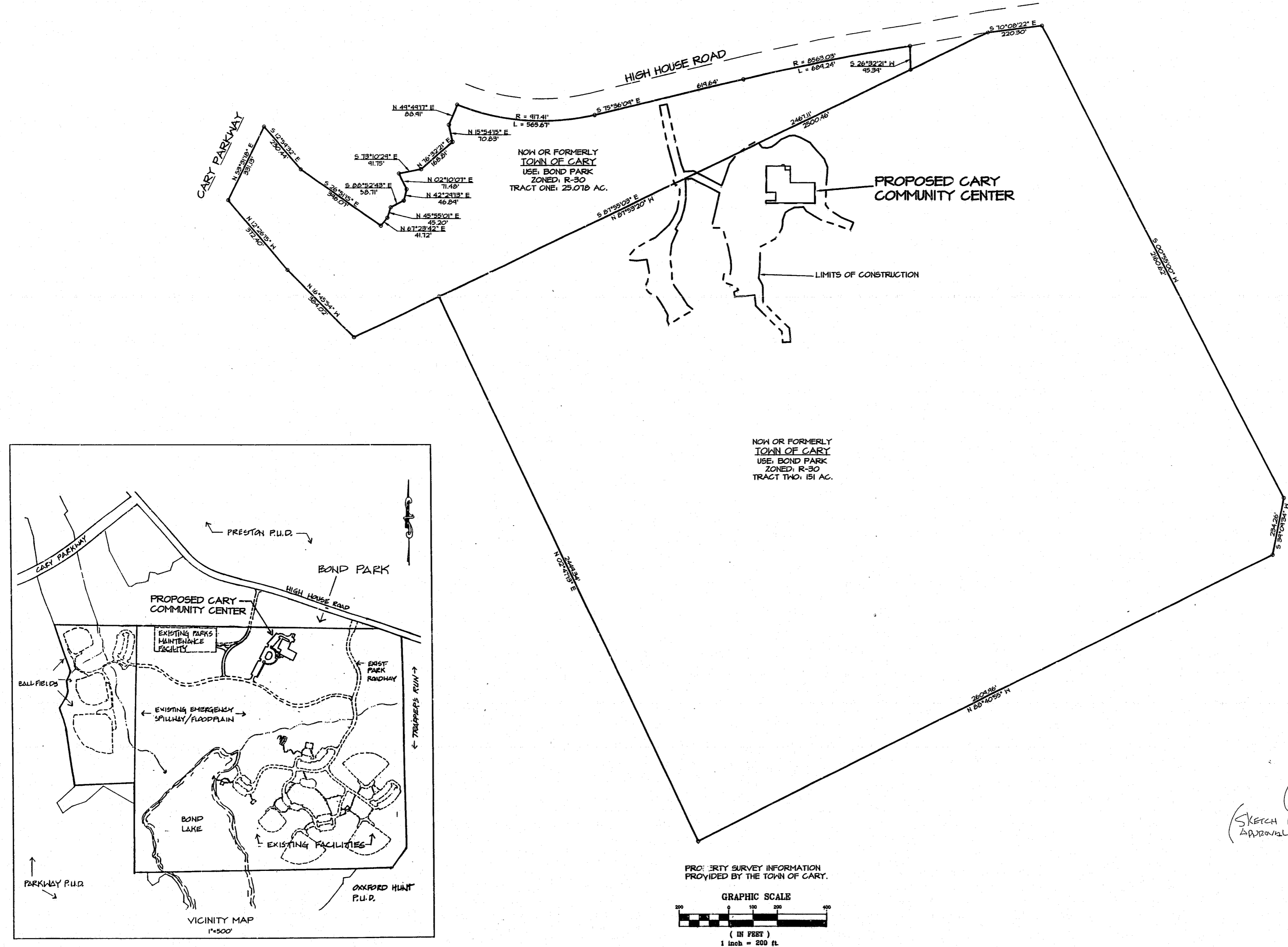


THE ROBERTS/STACY GROUP
 ARCHITECTURE • PLANNING
 4011 WestChase Boulevard
 Suite 100
 Raleigh, N.C. 27607
 Telephone 919-631-1831
 Fax 919-631-1833



TOWN OF CARY
 COMMUNITY CENTER NO. 2
 AT FRED G. BOND METRO PARK
 CARY, NORTH CAROLINA

SITE LOCATION PLAN

97-SP-150
APPROVED
 DEC. 8-25-97
 RRS

TOWN OF CARY
 DEVELOPMENT REVIEW GROUP

ENGINEERING REVIEW: _____
 UTILITY REVIEW: _____
 EROSION CONTROL REVIEW: _____
 PLANNING REVIEW: *3rd Rev*
 PLAN TYPE: *Sketch*
 DATE SUBMITTED: *8-18-97*

(SKETCH PLAN APPROVAL ONLY)
 N/C

SKETCH PLAN SUBMITTAL

PRELIMINARY PLANS NOT FOR CONSTRUCTION

Drawn By: EAL
 Approved By: CLH
 Sheet Number: _____

SD-1
 Date: 8/19/97
 Project Number: 97.0014

CLH DESIGN, P.A.
 MacGregor Park
 121 Edinburg South
 Suite 203
 Cary, North Carolina 27511
 Phone: (919) 318-6716
 Fax: (919) 318-7316

"original approved plan"