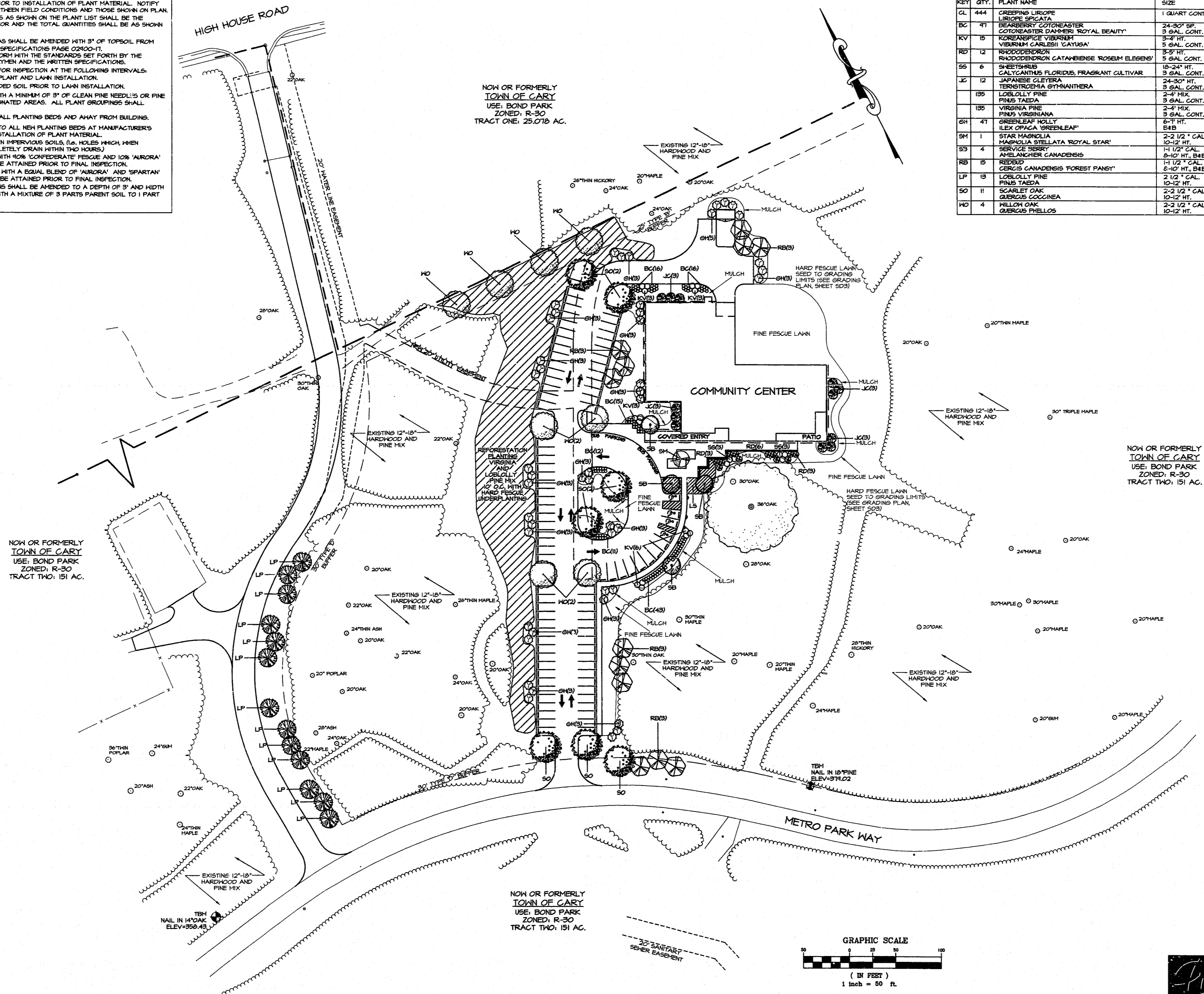


# LANDSCAPE NOTES

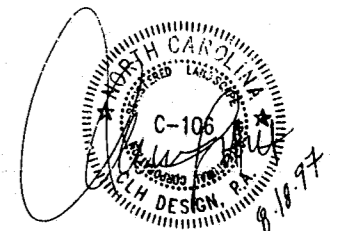
- LOCATE ALL EXISTING UTILITIES PRIOR TO INSTALLATION OF PLANT MATERIAL. NOTIFY OWNER OF ANY DISCREPANCIES BETWEEN FIELD CONDITIONS AND THOSE SHOWN ON PLAN.
- VERIFICATION OF TOTAL QUANTITIES AS SHOWN ON THE PLANT LIST SHALL BE THE RESPONSIBILITY OF THE CONTRACTOR AND THE TOTAL QUANTITIES SHALL BE AS SHOWN ON THE PLAN.
- THE TOP SIX INCHES OF LAWN AREAS SHALL BE AMENDED WITH 3" OF TOPSOIL FROM ON-SITE STOCKPILE. SEE WRITTEN SPECIFICATIONS PAGE 02100-11.
- ALL PLANT MATERIAL SHALL CONFORM WITH THE STANDARDS SET FORTH BY THE AMERICAN ASSOCIATION OF NURSERYMEN AND THE WRITTEN SPECIFICATIONS.
- CONTACT LANDSCAPE ARCHITECT FOR INSPECTION AT THE FOLLOWING INTERVALS:
  - REVIEW OF GRADING PRIOR TO PLANT AND LAWN INSTALLATION.
  - REVIEW OF CONDITION OF AMENDED SOIL PRIOR TO LAWN INSTALLATION.
- PLANTING BEDS TO BE MULCHED WITH A MINIMUM OF 3" OF CLEAN PINE NEEDLES OR PINE BARK MULCH. SEE PLAN FOR DESIGNATED AREAS. ALL PLANT GROUPINGS SHALL MULCHED AS ONE BED.
- ESTABLISH POSITIVE DRAINAGE IN ALL PLANTING BEDS AND AWAY FROM BUILDING.
- APPLY PRE-EMERGENT HERBICIDE TO ALL NEW PLANTING BEDS AT MANUFACTURER'S RECOMMENDED RATE PRIOR TO INSTALLATION OF PLANT MATERIAL.
- DO NOT INSTALL PLANT MATERIAL IN IMPERVIOUS SOILS. (i.e. HOLES WHICH WHEN FILLED WITH WATER DO NOT COMPLETELY DRAIN WITHIN TWO HOURS.)
- FINE LAWN AREAS TO BE SEEDDED WITH 90% 'CONFEDERATE' FESCUE AND 10% 'AURORA' FESCUE. 90% COVERAGE SHALL BE ATTAINED PRIOR TO FINAL INSPECTION.
- HARD LAWN AREAS TO BE SEEDDED WITH AN EQUAL BLEND OF 'AURORA' AND 'SPARTAN' FESCUES. 90% COVERAGE SHALL BE ATTAINED PRIOR TO FINAL INSPECTION.
- AREA TO RECEIVE RHODODENDRONS SHALL BE AMENDED TO A DEPTH OF 3" AND WIDTH OF 3' BEHIND BASE OF PLANTS WITH A MIXTURE OF 3 PARTS PARENT SOIL TO 1 PART MEDIUM SHREDDED PINE BARK.

# PLANT LIST

KEY	QTY.	PLANT NAME	SIZE	REMARKS
CL	444	CREeping LIRIOPE SPICATA	1 QUART CONT.	PLANT 18" O.C.
BC	47	BEARBERRY COTONEASTER 'ROYAL BEAUTY'	24-30" SP. 3 GAL. CONT.	FULL
KV	15	KOREANSPICE VIBURNUM VIBURNUM CARLESII 'CATUSA'	3-4' HT.	FULL
RD	12	RHODODENDRON RHODODENDRON CATAMBENSE 'ROSEUM ELEGANS'	3-5' HT. 3 GAL. CONT.	FULL
SS	6	SNEETSHRUB CALYCANTHUS FLORIDUS, FRAGRANT CULTIVAR	18-24" HT. 3 GAL. CONT.	FULL
JC	12	JAPANESE CLEYERA TERNSTROEMIA GYMNANTHERA	24-30" HT. 3 GAL. CONT.	FULL TO GROUND
LB		LOBLOLLY PINE PINUS TAEDA	2-4" MIX. 3 GAL. CONT.	FULL PLANT 10' ON CENTER
VB		VIRGINIA PINE PINUS VIRGINIANA	2-4" MIX. 3 GAL. CONT.	FULL PLANT 10' ON CENTER
GH	47	GREENLEAF HOLLY ILEX OPAGA 'GREENLEAF'	6-7' HT. B4B	FULL TO GROUND
SH	1	STAR MAGNOLIA MAGNOLIA STELLATA 'ROYAL STAR'	2-2 1/2" CAL. 10-12" HT.	B4B, FULL CROWN STRAIGHT TRUNK
SB	4	SERVICE BERRY AMELANCHIER CANADENSIS	1-1 1/2" CAL. 8-10" HT., B4B	B4B, FULL CROWN STRAIGHT TRUNK
RB	15	REDTOP CERCIS CANADENSIS 'FOREST PANSY'	1-1 1/2" CAL. 8-10" HT., B4B	FULL CROWN 3 TRUNK MIN.
LP	15	LOBLOLLY PINE PINUS TAEDA	2 1/2" CAL. 10-12" HT.	B4B, FULL
SO	11	SCARLET OAK QUERCUS COCCINEA	2-2 1/2" CAL. 10-12" HT.	B4B, FULL CROWN STRAIGHT TRUNK
WO	4	WILLOW OAK QUERCUS PHELLOS	2-2 1/2" CAL. 10-12" HT.	B4B, FULL CROWN STRAIGHT TRUNK



**THE ROBERTS/STACY GROUP**  
 ARCHITECTURE • PLANNING  
 4011 WestChase Boulevard  
 Suite 100  
 Raleigh, N.C. 27607  
 Telephone 919-831-1831  
 Fax 919-831-1833



**TOWN OF CARY**  
**COMMUNITY CENTER NO. 2**  
 AT FRED G. BOND METRO PARK  
 CARY, NORTH CAROLINA

## PLANTING PLAN

SKETCH PLAN  
 SUBMITTAL

PRELIMINARY PLANS  
 NOT FOR CONSTRUCTION

Drawn By: **BWALKAL** Approved By: **CEH**

Sheet Number: **SD-6**  
 Date: **8/18/97** Project Number: **970014**

**CLH DESIGN, P.A.**  
 MacGregor Park  
 121 Edinburg South  
 Suite 205  
 Cary, North Carolina 27511  
 Phone: (919) 319-6718  
 Fax: (919) 319-7516