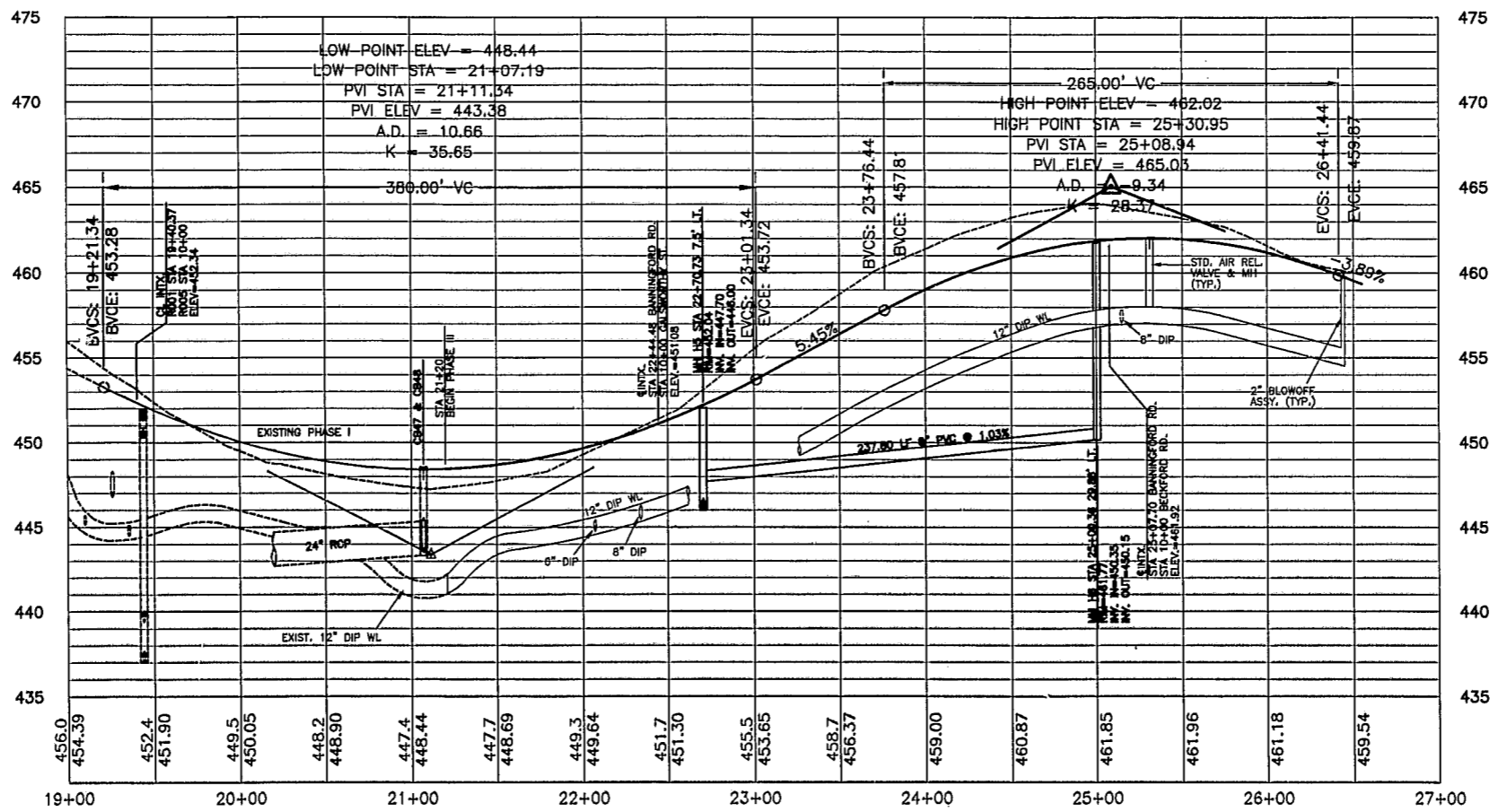


ALL CONSTRUCTION SHALL BE IN ACCORDANCE WITH CURRENT TOWN OF CARY STANDARD SPECIFICATIONS AND DETAILS.



APPROVED
 SEAL 023464
 BRADLEY D. HUNT
 10/16/98

**COTSWOLD - PHASE III
 CARY, NC**

**BANNINGFORD ROAD
 PLAN & PROFILE**

Withers & Ravenel
 Engineering and Surveying, Inc.
 111 MacKenon Drive, Cary NC 27511 Phone: 919-469-3340 Fax: 919-467-6008

Revisions			
No.	Description	Date	By
1	P&P TOP 1/11 REVISE	8/25/98	BDH

Designer W&R	Scale 1"=60'	CAD File
Drawn By BDH	Date 7/16/98	Sheet No.
Checked By JEC	Job No. 98174	4 of .

K:\CADD\98174\SH1_4.dwg Fri Oct 16 10:33:16 1998 WITHERS & RAVENEL ENGINEERING AND SURVEYING, INC.