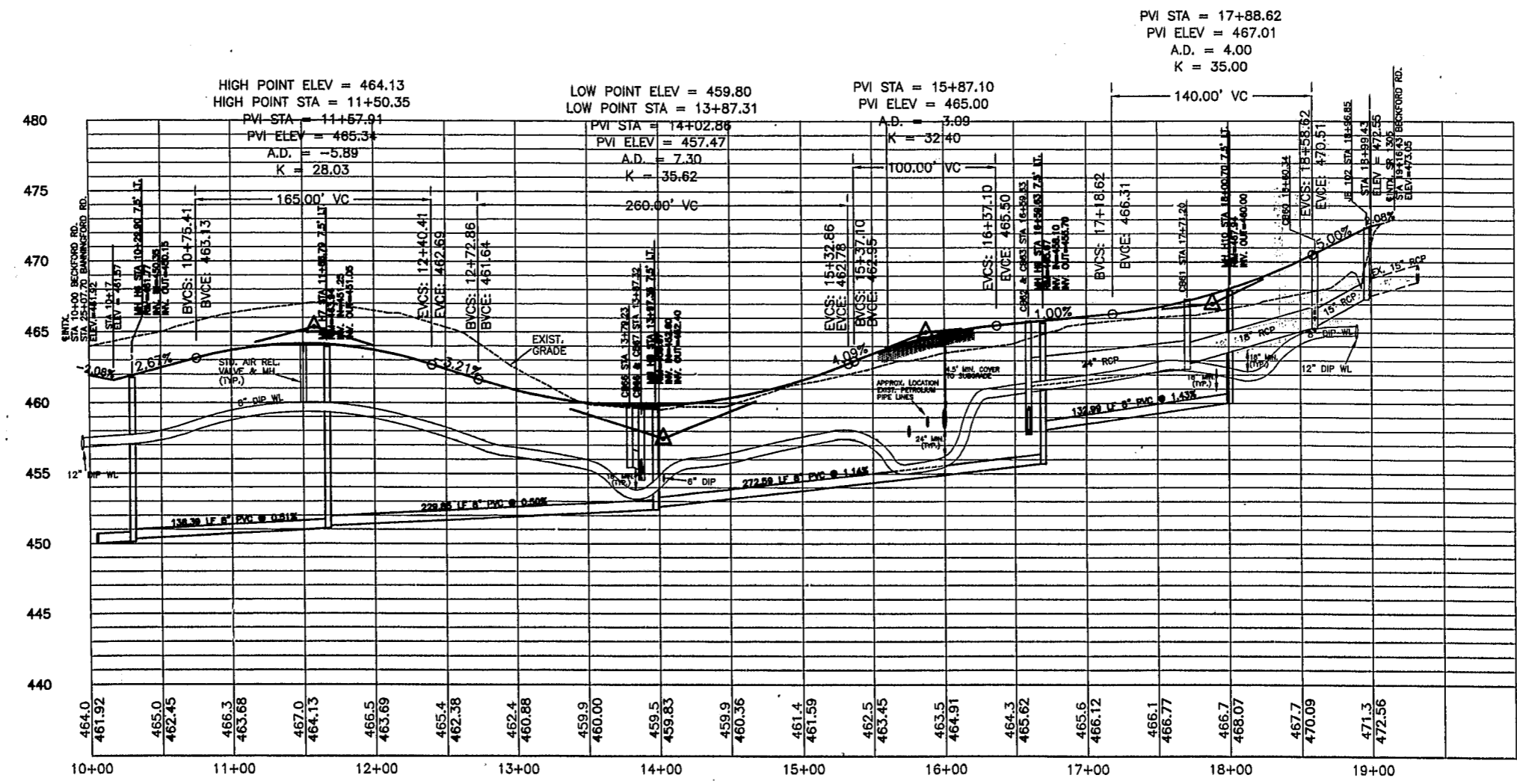
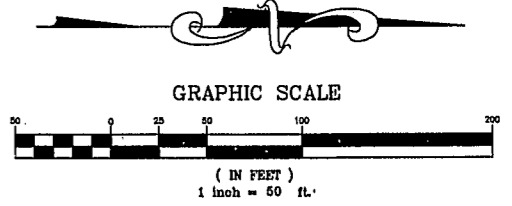


ALL CONSTRUCTION SHALL BE IN ACCORDANCE WITH CURRENT TOWN OF CARY STANDARD SPECIFICATIONS AND DETAILS.



**APPROVED**  
 7/16/98  
 TM 10-20-98

*Bridley D. Hunt*  
 10/16/98

Revisions			
No.	Description	Date	By
1	PER 702.13A REVIEW	7/21/98	BKH