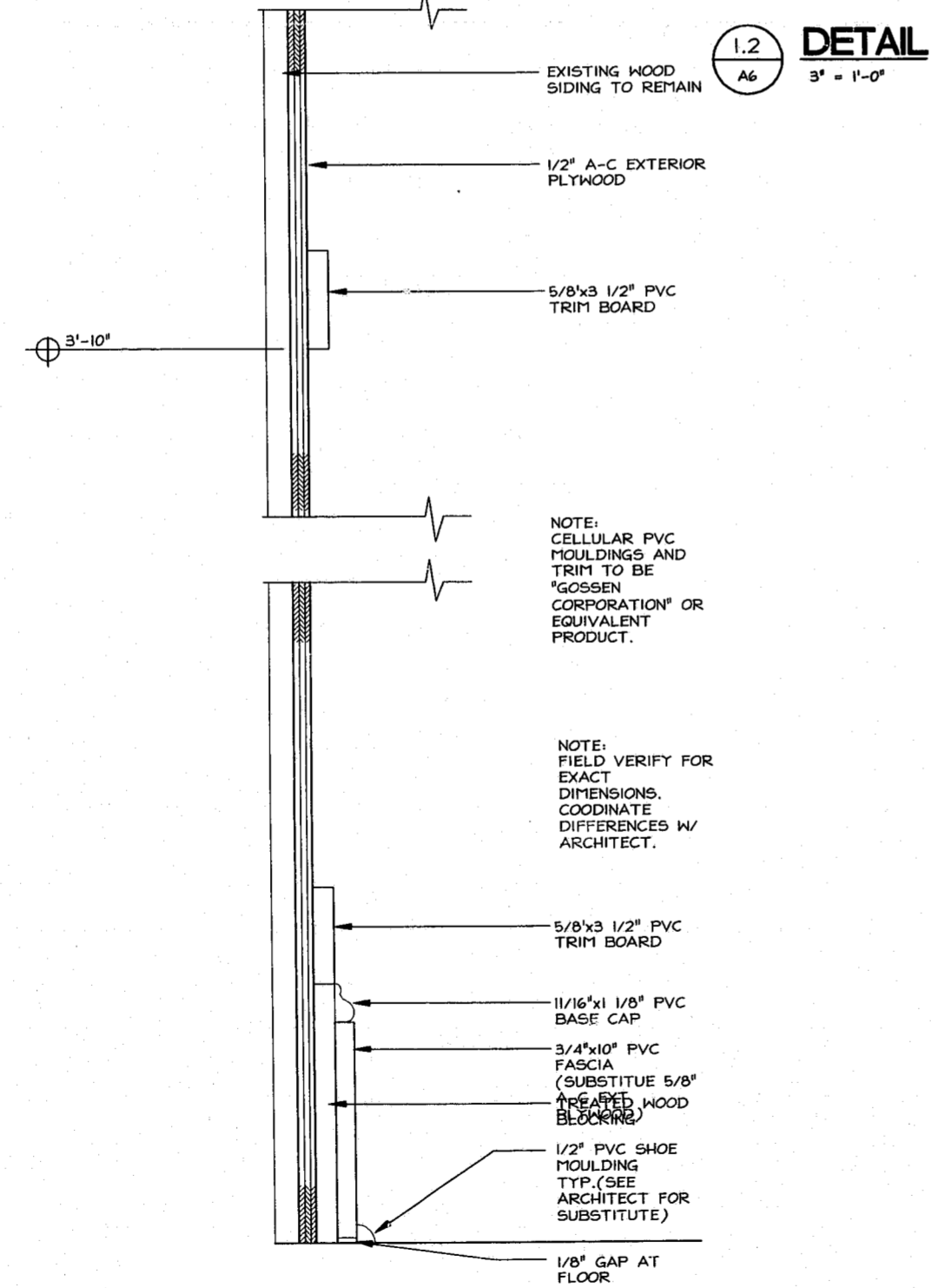
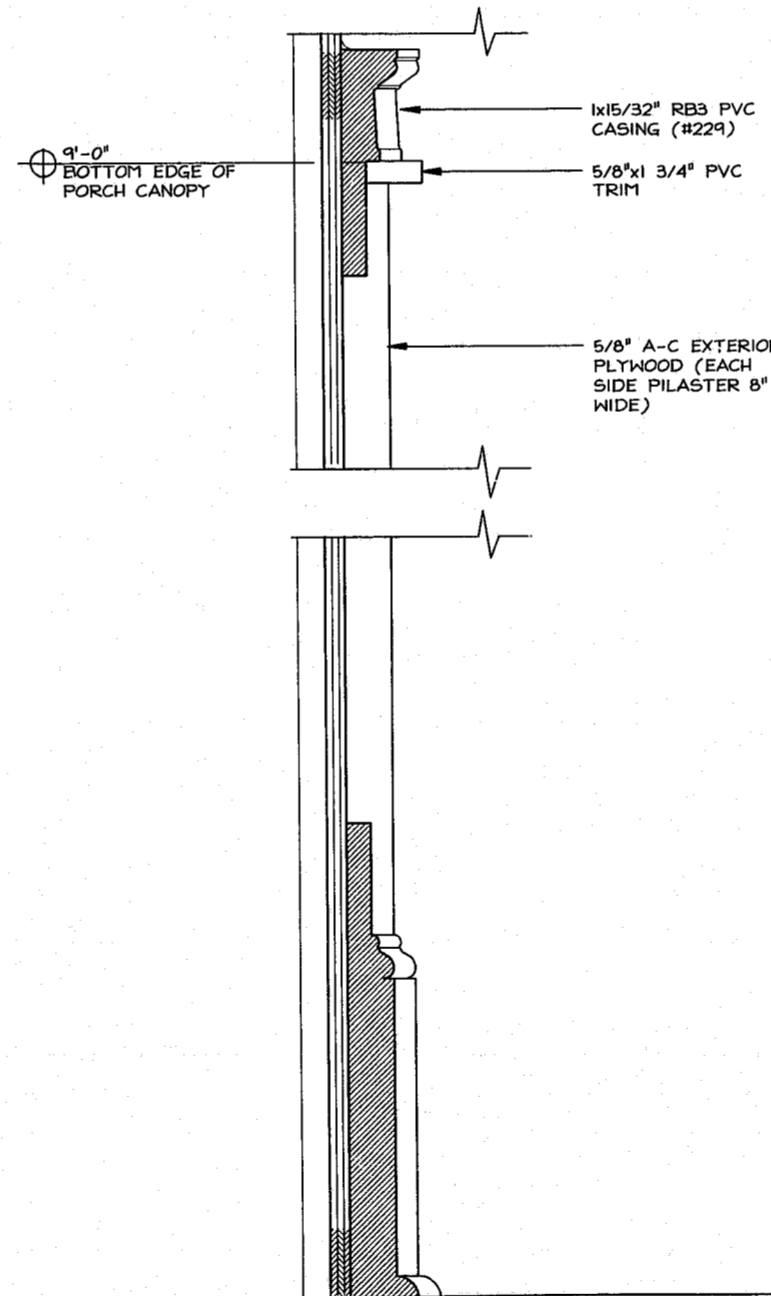


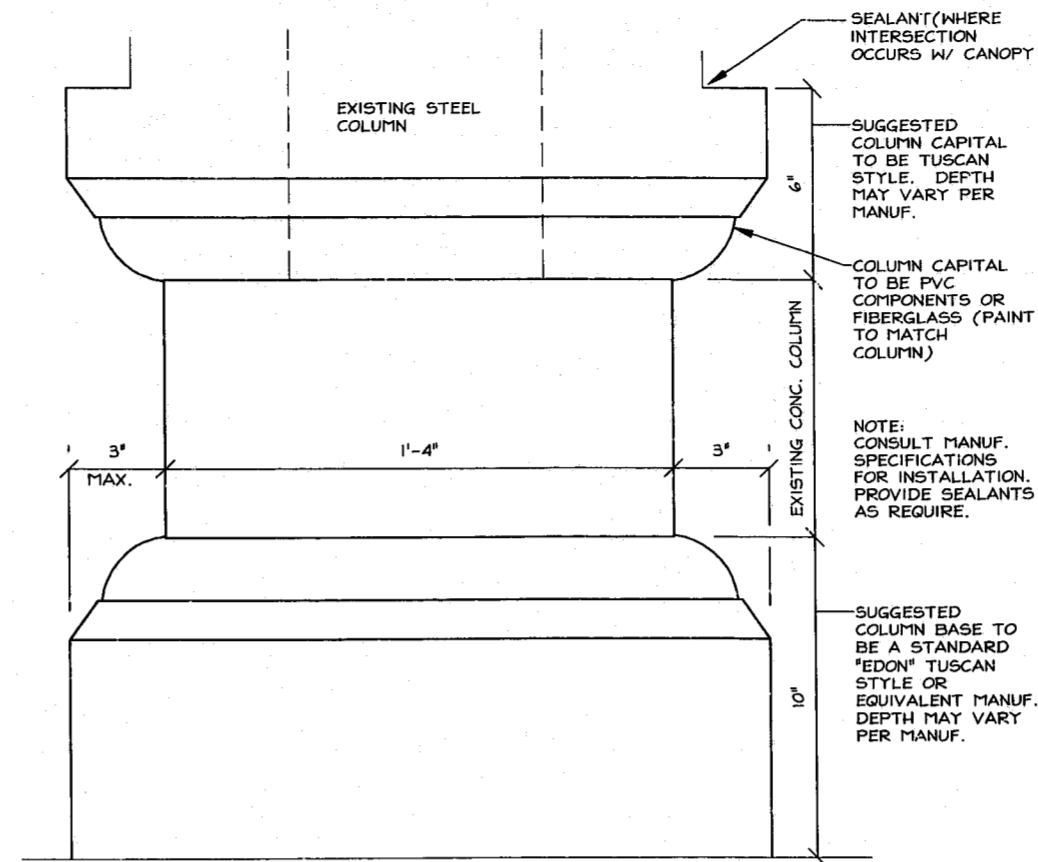
1 EXT. PORCH MOULDING SECTION
3' - 1'-0"



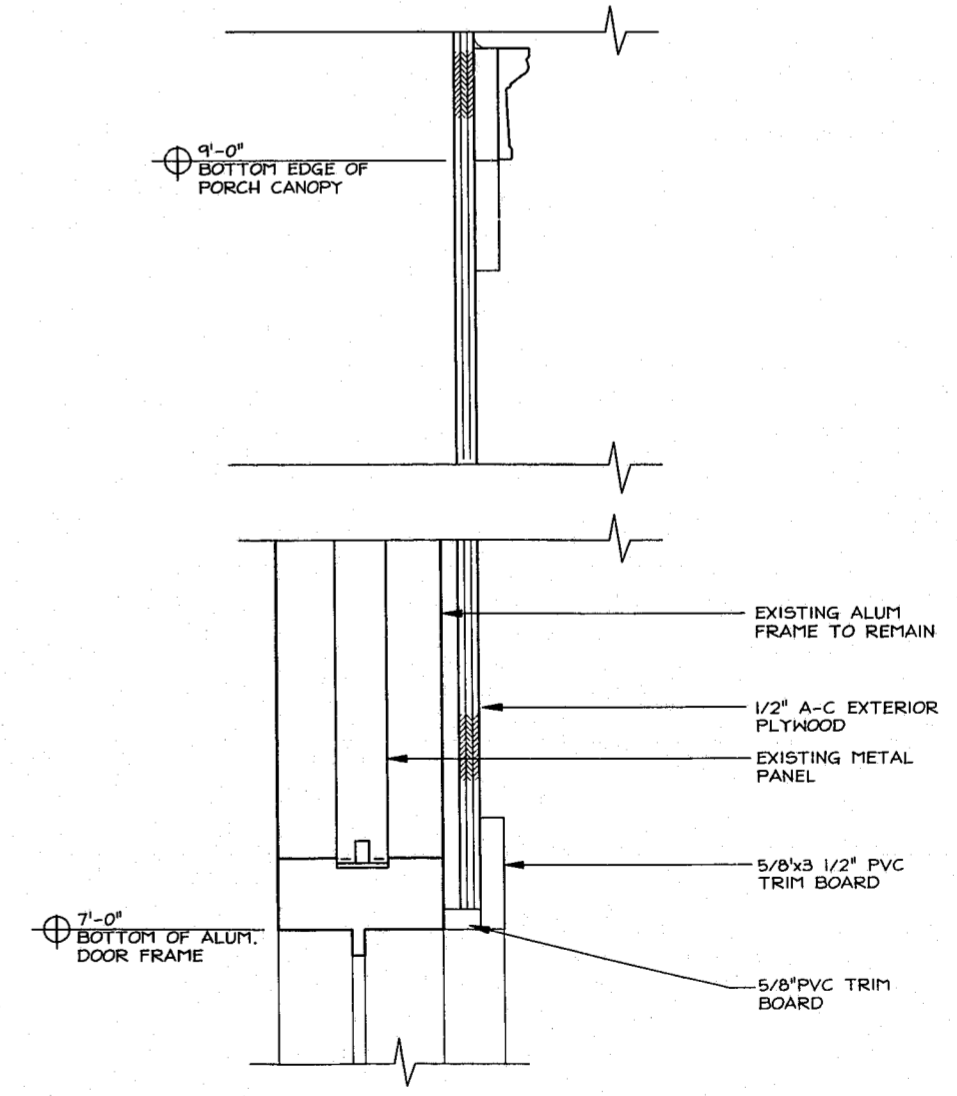
1.2 DETAIL
3' - 1'-0"



3 EXTERIOR PILASTER DETAIL
3' - 1'-0"

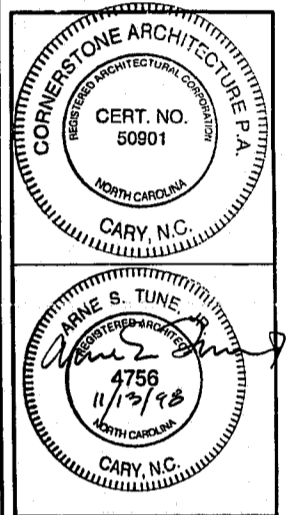


2 EXTERIOR COLUMN DETAIL
3' - 1'-0"



4 EXTERIOR DOOR HEAD SECTION
3' - 1'-0"

CORNERSTONE ARCHITECTURE P.A.
1143 Executive Circle
Cary, NC 27511
phone: 919.441.9790
fax: 919.461.9774



CRESCENT STATE BANK PROPOSED
1155 KILDAIRE FARM ROAD
CARY, NC 27511
EXTERIOR FINISH SECTIONS

| NO. | REVISIONS | DATE |
|-----|-----------|------|
| | | |
| | | |
| | | |
| | | |

DESIGNED: PWF:J
DRAWN: PWF:J
CHECKED: AST
PROJ. ARCH: AST
DATE: OCTOBER 22, 1998

T.O.C 98-SP-252

ISSUE FOR CONSTRUCTION

SHEET NO.
A6
OF: 4
CSB98001A6.dwg