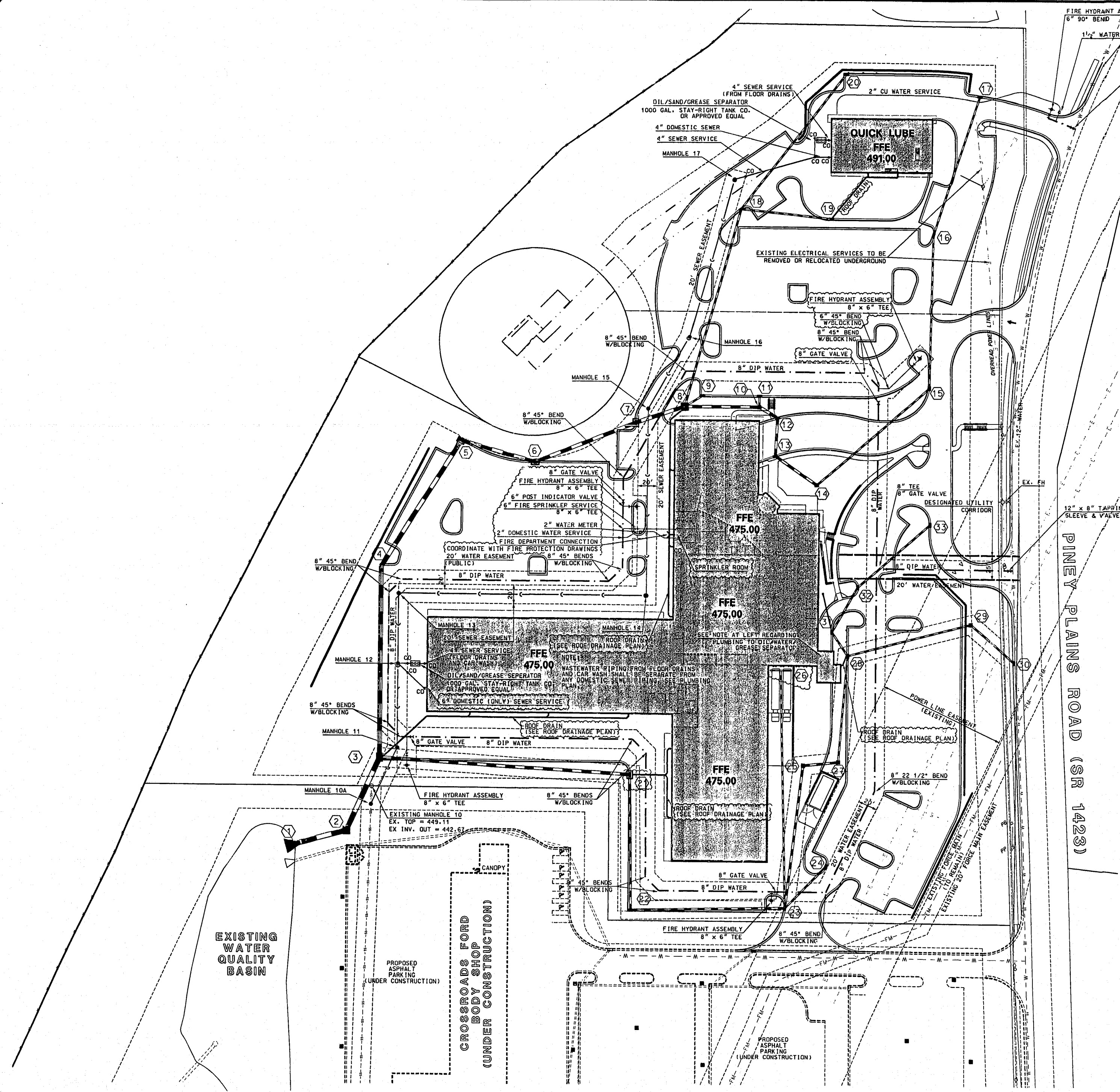


© JERRY TURNER & ASSOCIATES, INC. THIS DOCUMENT IS THE PROPERTY OF JERRY TURNER & ASSOCIATES. ALL RIGHTS ARE RESERVED AND ANY POSSESSION, REPRODUCTION, OR OTHER USE OF THIS DOCUMENT WITHOUT THE PRIOR PERMISSION OF JERRY TURNER & ASSOCIATES IS EXPRESSLY PROHIBITED.



IT'S THE LAW!
 AS OF JANUARY 1, 1986, NORTH CAROLINA STATE LAW REQUIRES ANYONE EXCAVATING WITH MECHANICAL EQUIPMENT ON HIGHWAY RIGHTS-OF-WAY, PRIVATE UTILITY EASEMENTS, OR PUBLIC SPACES TO NOTIFY ALL UTILITIES TWO (2) WORKING DAYS PRIOR TO DIGGING.

WATER SERVICES
 WATER SERVICES FROM MAN TO METER SHALL BE 3/4" TYPE K SOFT COPPER TUBING (ASTM B88). 3/4" METER BOXES SHALL BE CAST IRON AND CONSIST OF A COMPLETE UNIT FOR SETTING A 5/8" X 3/4" WATER METER. METER STOPS SHALL BE O-RING SEALED AND HAVE AN INLET ANGLE 60° AS MANUFACTURED BY FORD (YL-2211-233) OR APPROVED EQUAL WITH LOCKING LID. METERS SHALL BE INSTALLED BY THE TOWN OF CARY UTILITIES DEPARTMENT.

SANITARY SEWER SERVICES
 SANITARY SEWER SERVICES SHALL BE 4" CAST IRON ABS. OR PVC PER TOWN OF CARY STANDARD. SERVICES SHALL BE PERPENDICULAR FROM THE SEWER MAIN TO THE STREET RIGHT-OF-WAY OR EDGE OF EASEMENT. SERVICE CONNECTIONS TO EXISTING SEWER MAINS SHALL BE INSTALLED BY THE TOWN OF CARY UTILITIES DEPARTMENT. SERVICE LINES WITH A COVER OF 8" OR GREATER SHALL REQUIRE CLASS 1 BEDDING PER TOWN OF CARY STANDARDS.

GENERAL NOTES
 SANITARY SEWER: BACKFLOW PREVENTORS SHALL BE PROVIDED FOR ALL UNITS WITH FINAL FLOOR ELEVATIONS OF BUILDINGS LESS THAN 7' ABOVE MANHOLE (LOCATE ON PRIVATE SIDE OF CLEANOUT). MINIMUM GROUND COVER OF 3" SHALL BE PROVIDED FOR ALL SANITARY SEWER COLLECTION LINES 4" AND LARGER IN NONTRAFFIC AREAS. MINIMUM COVER OF 4" FROM SUB-BASE IN TRAFFIC AREAS SHALL BE PROVIDED FOR ALL COLLECTOR LINES 4" AND LARGER. IF MINIMUM COVER IS LESS THAN 4" DUCTILE IRON PIPE SHALL BE REQUIRED IN CLASS 1 BEDDING (MINIMUM COVER SHALL BE NO LESS THAN 3"). MINIMUM SLOPE FOR 4" SANITARY SEWER COLLECTION LINES SHALL BE NO LESS THAN 1% WITH CLEANOUTS EVERY 50 LINEAL FEET. MINIMUM SLOPE FOR 6" SANITARY SEWER COLLECTION LINES SHALL BE NO LESS THAN 0.6% WITH CLEANOUTS EVERY 100 LINEAL FEET. MAINTAIN 12" VERTICAL SEPARATION FROM STORM SEWER OR SPECIFY FERROUS PIPE FOR SANITARY SEWER. ALSO MAINTAIN 10" HORIZONTAL SEPARATION AND 18" VERTICAL SEPARATION FROM WATER MAINS OR SPECIFY FERROUS PIPE FOR SANITARY SEWER. WATER: WATER MAINS SHALL BE INSTALLED AT A DEPTH WITH A MINIMUM COVER OF 3' WITH 18" VERTICAL CLEARANCE FROM OTHER UNDERGROUND UTILITIES AND 10" HORIZONTAL CLEARANCE FROM ALL OTHER UTILITIES. PRESSURE REDUCING VALVE SHALL BE PROVIDED IF PRESSURE IS IN EXCESS OF 80 PSI (PRESSURE REDUCERS FOR WATER SERVICES SHALL BE ON PRIVATE SIDE OF WATER METER). GENERAL: ALL WATER AND SEWER MAINS WITHIN PUBLIC EASEMENTS AND RIGHTS-OF-WAY SHALL BE OWNED, OPERATED, AND MAINTAINED BY THE PUBLIC AUTHORITY. ALL CONSTRUCTION SHALL CONFORM TO LOCAL AUTHORITY STANDARDS. ALL UNDERGROUND UTILITIES ARE APPROXIMATELY LOCATED. ACTUAL LOCATION AND DEPTH SHALL BE CONFIRMED IN THE FIELD PRIOR TO CONSTRUCTION. STORM SEWER (RCP) SHALL BE CONSTRUCTED TO THE FOLLOWING CLASSES: COVER LESS THAN 10' CLASS C OR D BEDDING, CLASS III WALLS COVER 10 TO 15' CLASS B BEDDING, CLASS III WALLS COVER GREATER THAN 15' CLASS B BEDDING, CLASS IV WALLS PRIOR TO BEGINNING ANY CONSTRUCTION OF IMPROVEMENTS WITHIN ANY CITY OR NCDOT STREET OR HIGHWAY RIGHT-OF-WAY, THE FOLLOWING PROCEDURES SHALL BE UNDERTAKEN: CITY RIGHT-OF-WAY: CONTACT LOCAL AUTHORITIES TRAFFIC ENGINEERING DEPARTMENT FOR INFO ON DETOURS, OPEN-CUTTING OF STREETS, OR FOR ANY CONSTRUCTION WITHIN RIGHT-OF-WAY. NCDOT RIGHT-OF-WAY: CONTACT PROJECT ENGINEER(S) AND OBTAIN ALL PERMITS AND ENCROACHMENTS (KEEP COPIES ON CONSTRUCTION SITE). ALSO CONTACT NCDOT DISTRICT OFFICE 24 HOURS IN ADVANCE PRIOR TO PLACING CURB AND GUTTER.

NOTES:
 ALL UNDERGROUND UTILITIES SHOULD ENTER SITE THROUGH DESIGNATED UTILITY CORRIDOR SO AS TO MINIMIZE DISTURBANCE OF BUFFERS, LANDSCAPE AREAS, TREE SAVE AREAS, ETC. COORDINATE ALL UTILITY SERVICES INTO BUILDING WITH PLUMBING PLANS. WATER SERVICE: BACKFLOW PREVENTION DEVICES SHALL BE LOCATED INSIDE OF BUILDING (COORDINATE WITH PLUMBING PLAN). BACKFLOW PREVENTION DEVICES SHALL BE AS FOLLOWS: CAR WASH - REDUCED PRESSURE ZONE (RPZ) FIRE SPRINKLER - DOUBLE DETECTOR CHECK VALVE ASSEMBLY DOMESTIC - DOUBLE CHECK VALVE ASSEMBLY SEWER SERVICE: SEWER SERVICE SIZE TO BE AS SHOWN. COORDINATE WITH PLUMBING PLAN. SEWER CLEANOUTS SUBJECT TO TRAFFIC SHALL CONFORM TO TOWN OF CARY STANDARD 7.12. SEWER SERVICE FROM NON-DOMESTIC SOURCES (SHOP FLOOR DRAINS, CAR WASH, OIL CHANGE AREA FLOOR DRAINS, ETC.) TO BE ROUTED THROUGH OIL/SAND/GREASE SEPARATORS. WASTEWATER FROM NON-DOMESTIC SOURCES SHALL BE PLUMBED TO OIL/SAND/GREASE SEPARATORS SEPARATELY FROM DOMESTIC WASTE PIPING. ESTIMATED DAILY SEWER FLOW = GROSS FLOOR AREA 86,521 SQUARE FEET x 0.12 GPD PER SQUARE FOOT = 10,383 GPD

APPROVED
 99-SP-259-A
 11/1/05
 11/1/05

SCALE
 1" = 50'

REVISIONS
 MARCH 6, 2000
 APRIL 17, 2000
 MAY 15, 2000
 SEPTEMBER 18, 2000
 OCTOBER 2, 2000

DRAWN / CHECKED
 BCB / WHM

SCALE / DATE
 1" = 50' / 12/06/99

TITLE
 UTILITY PLAN

FILE NO. / JOB NO.
 99-SP-259-A / JTA # 2351.02

SEAL / SHEET NO.
 BNK # 99472000 / SHEET NO.

ENGINEER
 W. MITCHELL

SITE-3

JTA
JERRY TURNER & ASSOCIATES, INC.
 Landscape Architecture
 Land Planning
 Environmental Design

905 Jones Franklin Road
 Raleigh, North Carolina 27606
 (919) 851-7150 fax: (919) 851-7547

277 S.E. 5th Avenue
 Delray Beach, Florida 33483
 (561) 276-0453 fax: (561) 272-7593

CROSSROADS FORD SERVICE CENTER
 1660 PINEY PLAINES ROAD
 CARY, NORTH CAROLINA

BNK
 BASS, NIXON, & KENNEDY, INC.
 CONSULTING ENGINEERS
 7416 CHAPEL HILL ROAD
 RALEIGH, NC 27607
 PHONE: (919) 851-4422
 FAX: (919) 851-8968

APPROVED
 11/1/05

SCALE
 1" = 50'

REVISIONS
 MARCH 6, 2000
 APRIL 17, 2000
 MAY 15, 2000
 SEPTEMBER 18, 2000
 OCTOBER 2, 2000

DRAWN / CHECKED
 BCB / WHM

SCALE / DATE
 1" = 50' / 12/06/99

TITLE
 UTILITY PLAN

FILE NO. / JOB NO.
 99-SP-259-A / JTA # 2351.02

SEAL / SHEET NO.
 BNK # 99472000 / SHEET NO.

ENGINEER
 W. MITCHELL

SITE-3