

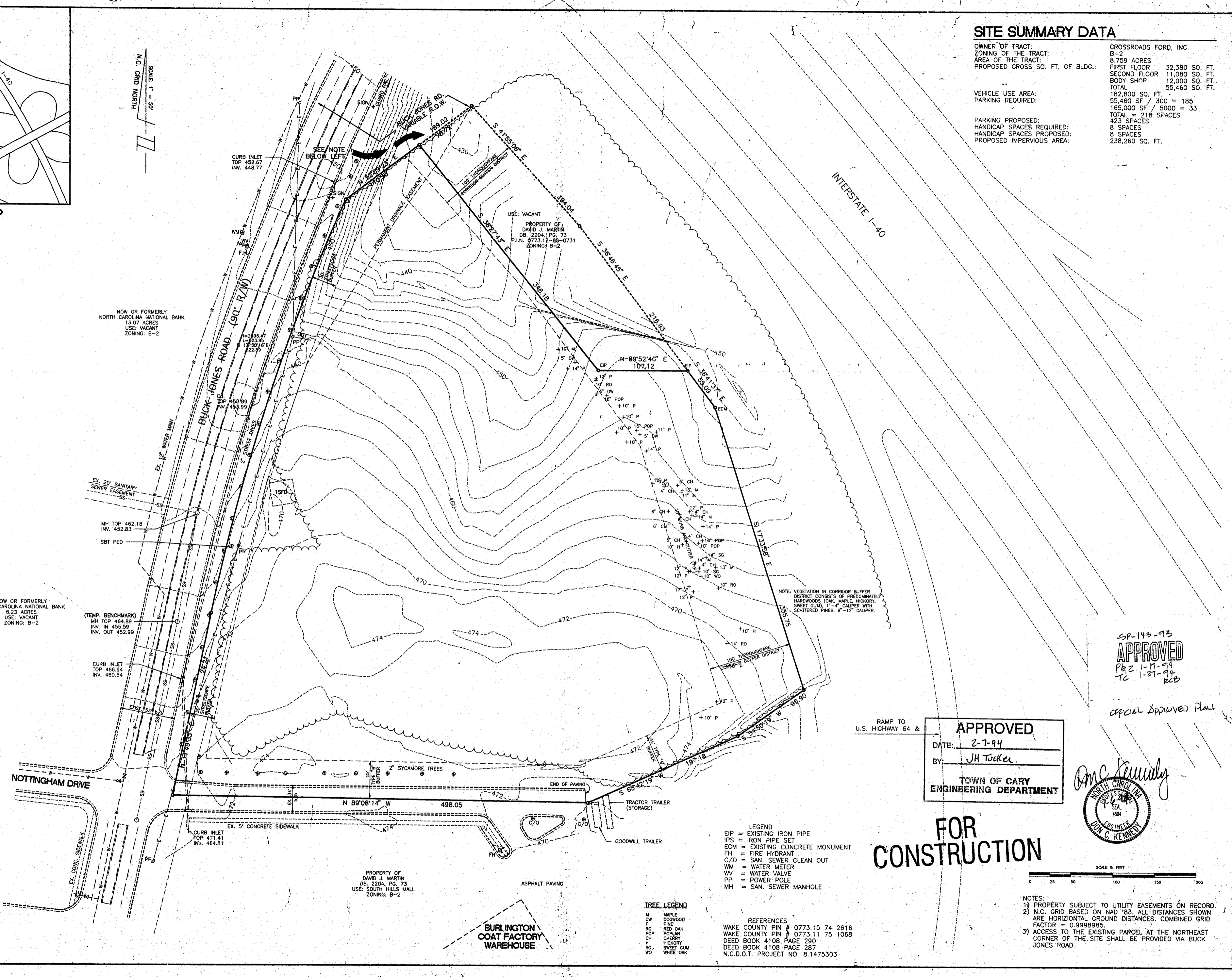
VICINITY MAP  
SCALE: 1" = 500'

**SITE SUMMARY DATA**

OWNER OF TRACT:	CROSSROADS FORD, INC.
ZONING OF THE TRACT:	B-2
AREA OF THE TRACT:	8.759 ACRES
PROPOSED GROSS SQ. FT. OF BLDG.:	FIRST FLOOR 32,380 SQ. FT. SECOND FLOOR 11,080 SQ. FT. BODY SHOP 12,000 SQ. FT. TOTAL 55,460 SQ. FT.
VEHICLE USE AREA:	182,800 SQ. FT.
PARKING REQUIRED:	55,460 SF / 300 = 185 165,000 SF / 5000 = 33 TOTAL = 218 SPACES
PARKING PROPOSED:	423 SPACES
HANDICAP SPACES REQUIRED:	8 SPACES
HANDICAP SPACES PROPOSED:	8 SPACES
PROPOSED IMPERVIOUS AREA:	238,260 SQ. FT.

NOW OR FORMERLY  
NORTH CAROLINA NATIONAL BANK  
13.07 ACRES  
USE: VACANT  
ZONING: B-2

NOW OR FORMERLY  
NORTH CAROLINA NATIONAL BANK  
5.23 ACRES  
USE: VACANT  
ZONING: B-2

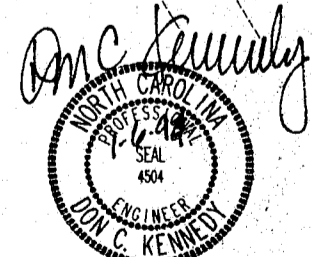


RAMP TO  
U.S. HIGHWAY 64 &

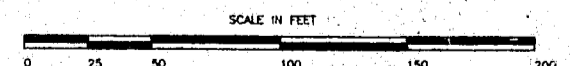
**APPROVED**  
DATE: 2-7-94  
BY: JH Tooke  
TOWN OF CARY  
ENGINEERING DEPARTMENT

SP-143-93  
**APPROVED**  
P&E 1-17-94  
TC 1-27-94  
RCS

OFFICIAL APPROVED PLAN



**FOR CONSTRUCTION**



- LEGEND**
- EIP = EXISTING IRON PIPE
  - IPS = IRON PIPE SET
  - ECM = EXISTING CONCRETE MONUMENT
  - FH = FIRE HYDRANT
  - C/O = SAN. SEWER CLEAN OUT
  - WM = WATER METER
  - WV = WATER VALVE
  - PP = POWER POLE
  - MH = SAN. SEWER MANHOLE

- TREE LEGEND**
- M MAPLE
  - DO DW
  - DOGWOOD
  - P PINE
  - RED OAK
  - RO
  - POPP
  - POPLAR
  - CH
  - CHERRY
  - H HICKORY
  - SG
  - SWEET GUM
  - WO
  - WHITE OAK

- REFERENCES**
- WAKE COUNTY PIN # 0773.15 74 2616
  - WAKE COUNTY PIN # 0773.11 75 1068
  - DEED BOOK 4108 PAGE 290
  - DEED BOOK 4108 PAGE 287
  - N.C.D.O.T. PROJECT NO. 8.1475303

- NOTES:**
- 1) PROPERTY SUBJECT TO UTILITY EASEMENTS ON RECORD.
  - 2) N.C. GRID BASED ON NAD '83. ALL DISTANCES SHOWN ARE HORIZONTAL GROUND DISTANCES. COMBINED GRID FACTOR = 0.99989885.
  - 3) ACCESS TO THE EXISTING PARCEL AT THE NORTHEAST CORNER OF THE SITE SHALL BE PROVIDED VIA BUCK JONES ROAD.

**BASS, NIXON, & KENNEDY, INC., CONSULTING ENGINEERS**  
919/851-4422/7418 CHAPEL HILL ROAD, RALEIGH, N. C. 27607

NO.	DATE	NO.	DATE

93350000 11-29-93 K. REEF  
JOB NO. DATE DRAWN BY  
**EXISTING SITE CONDITIONS**  
SCALE: 1" = 50'

**CROSSROADS FORD**  
**BUCK JONES ROAD @ I-40**  
CARY WAKE COUNTY NORTH CAROLINA

SHEET 1 OF 8