

NO.	DATE	NO.	DATE	REVISIONS

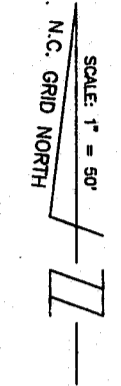
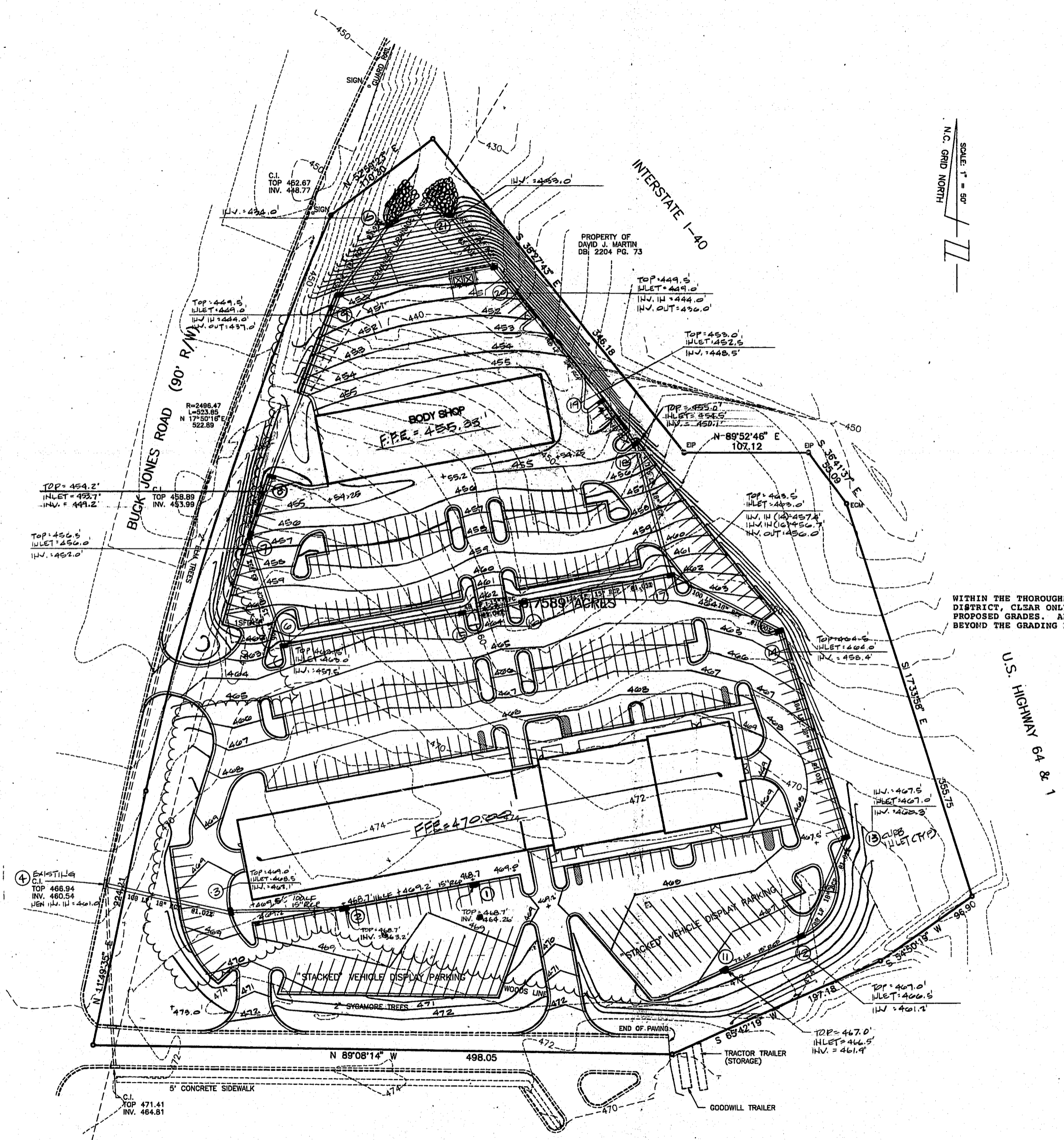
93350000 11--93
 JOB NO. DATE DRAWN BY
 SITE *DRG/LLS*
 AND *GRD/LLS*
 SCALE: 1" = 50'

CROSSROADS FORD
 BUCK JONES ROAD @ I-40
 NORTH CAROLINA
 WAKE COUNTY
 CARY

SHEET **3** OF **8**

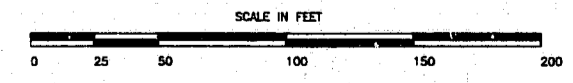
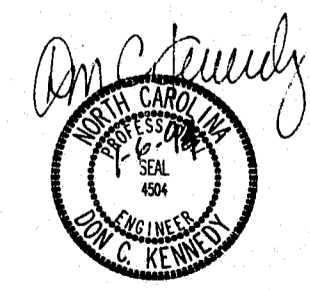
STORM DRAINAGE SUMMARY

INLET NUMBER	DRAIN AREA	C	I (IN/HR)	(CFS)	PIPE NUMBER	TOTAL Q	PIPE SIZE	PIPE SLOPE
1	0.4	0.95	7.22	2.7	1-2	2.7	15"	1.00
2	0.6	0.95	7.22	4.1	2-3	6.8	15"	1.02
3	0.3	0.95	7.22	2.1	3-4	6.8	18"	1.00
6	0.3	0.95	7.22	2.1	6-7	2.11	15"	5.73
7	0.5	0.95	7.22	3.4	7-8	5.5	15"	5.00
8	0.6	0.95	7.22	4.1	8-9	9.6	18"	3.21
9	0.3	0.95	7.22	2.1	9-10	11.7	18"	3.95
11	0.3	0.95	7.22	2.1	11-12	2.1	15"	1.02
12	0.8	0.95	7.22	5.5	12-13	7.6	18"	1.02
13	0.2	0.95	7.22	1.4	13-14	9.0	18"	1.03
14	0.2	0.95	7.22	1.4	14-17	10.4	18"	1.00
15	0.4	0.95	7.22	2.7	15-16	2.7	15"	1.04
16	0.4	0.95	7.22	2.7	16-17	5.4	15"	1.05
17	0.2	0.95	7.22	1.4	17-18	17.2	18"	5.17
18	0.4	0.95	7.22	2.7	18-19	19.9	18"	3.57
19	0.6	0.95	7.22	4.1	19-20	24.0	24"	3.03
20	0.3	0.95	7.22	2.1	20-21	26.1	24"	5.00



- LEGEND**
- EIP = EXISTING IRON PIPE
 - IPS = IRON PIPE SET
 - ECM = EXISTING CONCRETE MONUMENT
 - FH = FIRE HYDRANT
 - C/O = SAN. SEWER CLEAN OUT
 - WM = WATER METER
 - WV = WATER VALVE
 - PP = POWER POLE
 - MH = SAN. SEWER MANHOLE

WITHIN THE THOROUGHFARE CORRIDOR BUFFER DISTRICT, CLEAR ONLY AS NEEDED TO ACHIEVE PROPOSED GRADES. ALL EXISTING VEGETATION BEYOND THE GRADING LIMITS TO REMAIN UNDISTURBED.



REFERENCES
 WAKE COUNTY PIN # 0773.15 74 2616
 WAKE COUNTY PIN # 0733.11 75 1068
 DEED BOOK 4108 PAGE 280
 DEED BOOK 4108 PAGE 287
 N.C.D.O.T. PROJECT NO. 8.1475303

- NOTES**
- 1) PROPERTY SUBJECT TO UTILITY EASEMENTS ON RECORD.
 - 2) N.C. GRID BASED ON NAD '83. ALL DISTANCES SHOWN ARE HORIZONTAL GROUND DISTANCES. COMBINED GRID FACTOR = 0.9998985.

PROPERTY OF DAVID J. MARTIN DBI 2204 PG. 73