

Revisions
 07.16.13 Per Town of Cary
 1st review

13-SP-034
 HTE #: 13-1581
 Approved by the Town of Cary
 Development Review Committee
 Planner: *[Signature]* Date: 8/16/2013

DEVELOPER:
 Crossroads Holdings, LLC
 PO Box 2069
 Wake Forest, NC 27588
 (919) 604-1646

Project
 Crossroads
 Quicklane - Cary

Existing Conditions

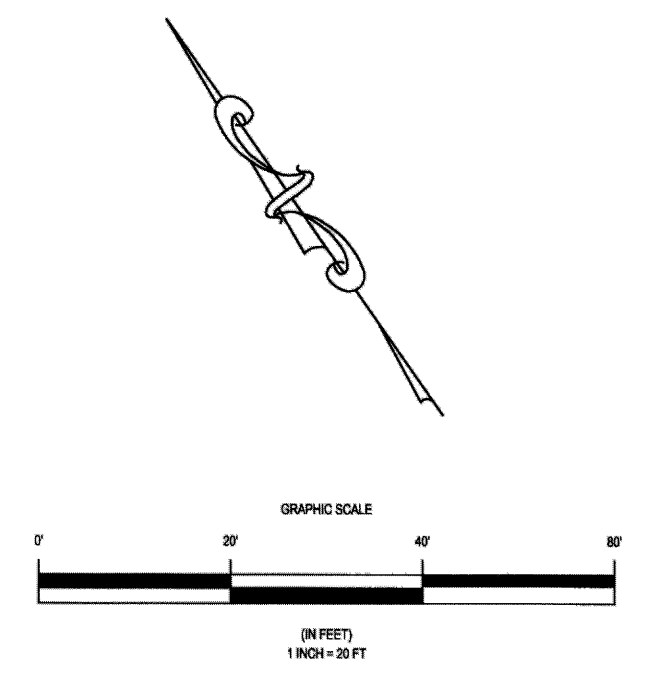
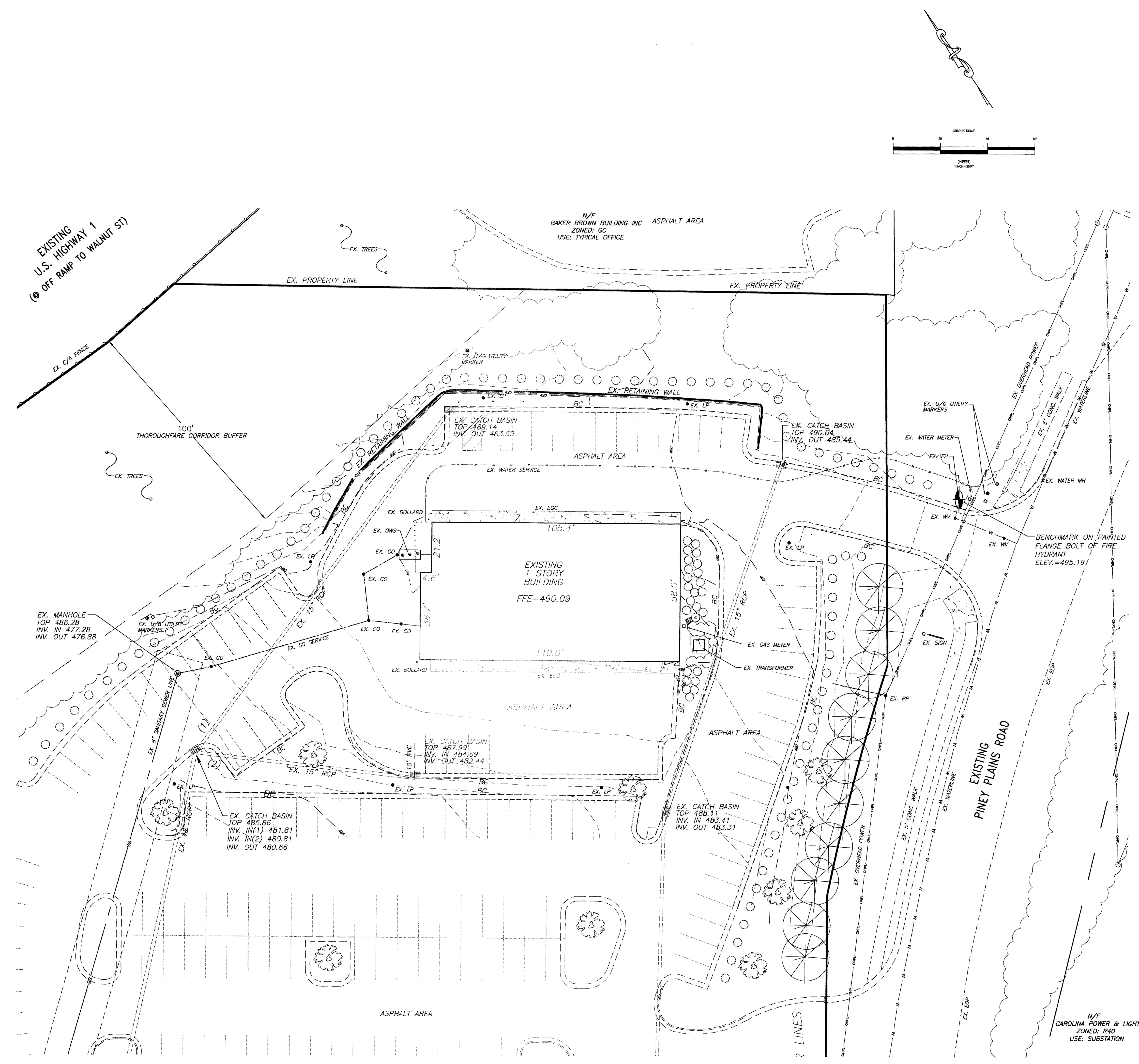
Date
 June 27, 2013

Scale
 1" = 20'

Sheet

CS - 2

- UTILITY WARNING -
 THE UNDERGROUND UTILITIES SHOWN HAVE BEEN LOCATED FROM FIELD SURVEY INFORMATION AND EXISTING DRAWINGS. THE SURVEYOR MAKES NO GUARANTEE THAT THE UNDERGROUND UTILITIES SHOWN COMPRISE ALL SUCH UTILITIES IN THE AREA, EITHER IN SERVICE OR ABANDONED. THE SURVEYOR FURTHER DOES NOT WARRANT THAT THE UNDERGROUND UTILITIES SHOWN ARE IN THE EXACT LOCATION INDICATED ALTHOUGH HE DOES CERTIFY THAT THEY ARE LOCATED AS ACCURATELY AS POSSIBLE FROM INFORMATION AVAILABLE. THE SURVEYOR HAS NOT PHYSICALLY LOCATED THE UNDERGROUND UTILITIES.



EXISTING
 U.S. HIGHWAY 1
 (OFF RAMP TO WALNUT ST)

EX. MANHOLE
 TOP 486.25
 INV. IN 477.28
 INV. OUT 476.88

EX. CATCH BASIN
 TOP 485.86
 INV. IN(1) 481.81
 INV. IN(2) 480.81
 INV. OUT 480.66

EX. CATCH BASIN
 TOP 489.14
 INV. OUT 483.59

EX. CATCH BASIN
 TOP 488.11
 INV. IN 483.41
 INV. OUT 483.31

EX. GAS METER
 EX. TRANSFORMER

BENCHMARK ON PAINTED
 FLANGE BOLT OF FIRE
 HYDRANT
 ELEV. = 495.19

N/F
 CAROLINA POWER & LIGHT
 ZONED: R40
 USE: SUBSTATION