



QUICK ASSOCIATES, P.A.

architects/planners
interior designers

714 st. mary's street
raleigh, nc 27605-1425
ph. (919) 821-2800
fax (919) 821-2896

**QUICKLANE
EXPANSION**
CARY, NC
CROSSROADS AUTOMOTIVE GROUP

issue date:
26 JUNE FOR 1ST
SUBMITTAL TO CARY
REVIEW
23 JULY FOR 2ND
SUBMITTAL TO CARY
REVIEW

THIS DRAWING AND THE DESIGN
SHOWN IS THE PROPERTY OF
QUICK ASSOCIATES, P.A. THE
REPRODUCTION, COPYING OR
OTHER USE OF THIS DRAWING
WITHOUT THEIR WRITTEN
CONSENT IS PROHIBITED AND
ANY INFRINGEMENT WILL BE
SUBJECT TO LEGAL ACTION.

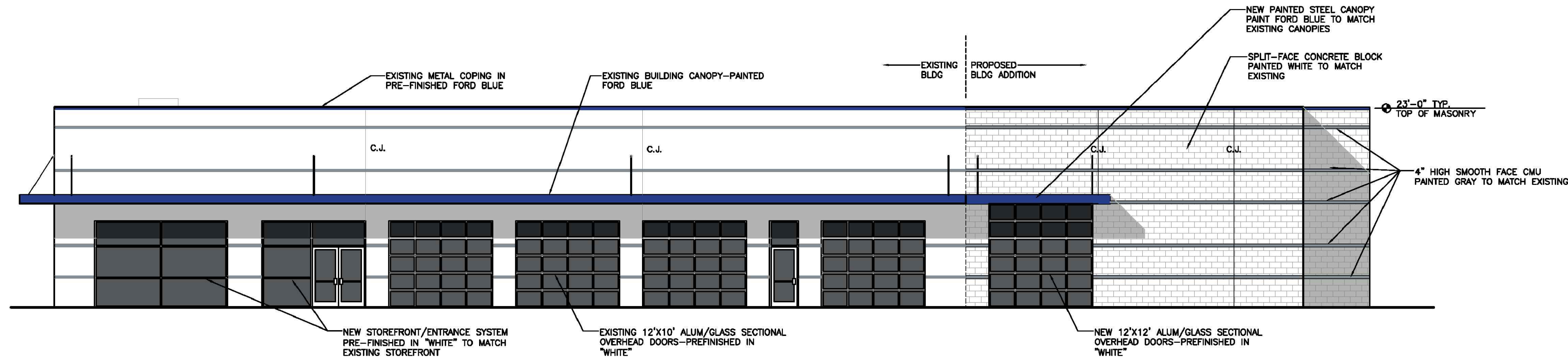
© COPYRIGHT 2013
QUICK ASSOCIATES, P.A.

project 11215.00
dwg. by ACH
ckd. by ACH

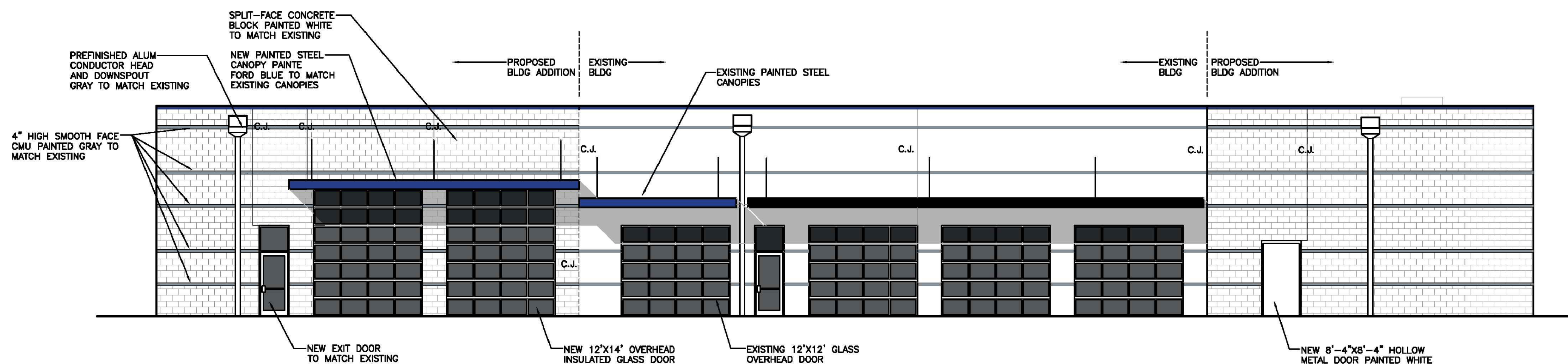
content
**COLOR BUILDING
ELEVATIONS**

sheet

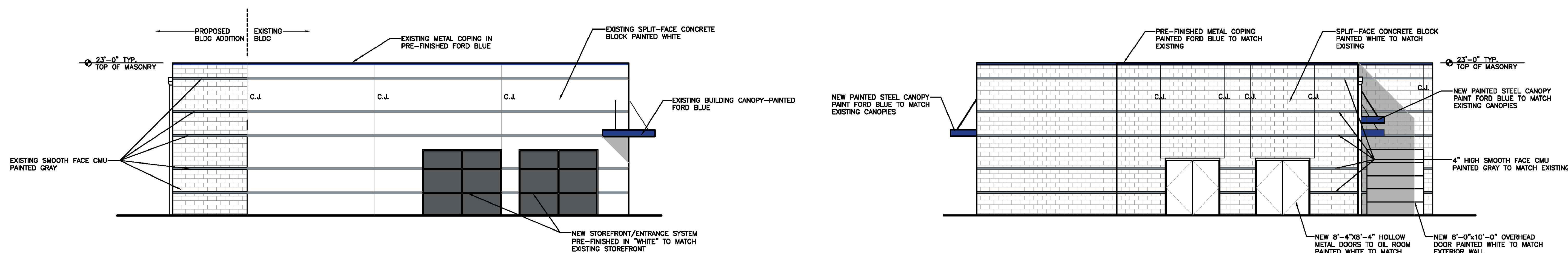
A-2.02



1 FRONT ELEVATIONS
SCALE: 1/8" = 1'-0"



2 REAR ELEVATIONS
SCALE: 1/8" = 1'-0"



3 PINEY PLAINS ROAD STREET ELEVATION
SCALE: 1/8" = 1'-0"

4 END ELEVATION
SCALE: 1/8" = 1'-0"

NOTE: ALL VENT PIPES, ETC. EXTENDING ABOVE THE ROOF SURFACE MUST BE PAINTED A COLOR THAT BLENDS WITH THE ROOF COLOR.

13-SP-034
HTE #: 13-1581
Approved by the Town of Cary
Development Review Committee
Planner: *[Signature]* Date: *8/14/2013*