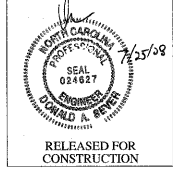


NOTE: ALL RECLAIMED WATERLINE PIPES TO BE RESTRAINED JOINT PVC IPS

**CHAS. H. SELLS, INC.**  
 Consulting Engineers, Surveyors & Photogrammetrists  
 15401 Weston Parkway  
 Cary, NC 27513  
 Tel: 919-678-0000  
 Fax: 919-678-0006  
 www.chasells.com

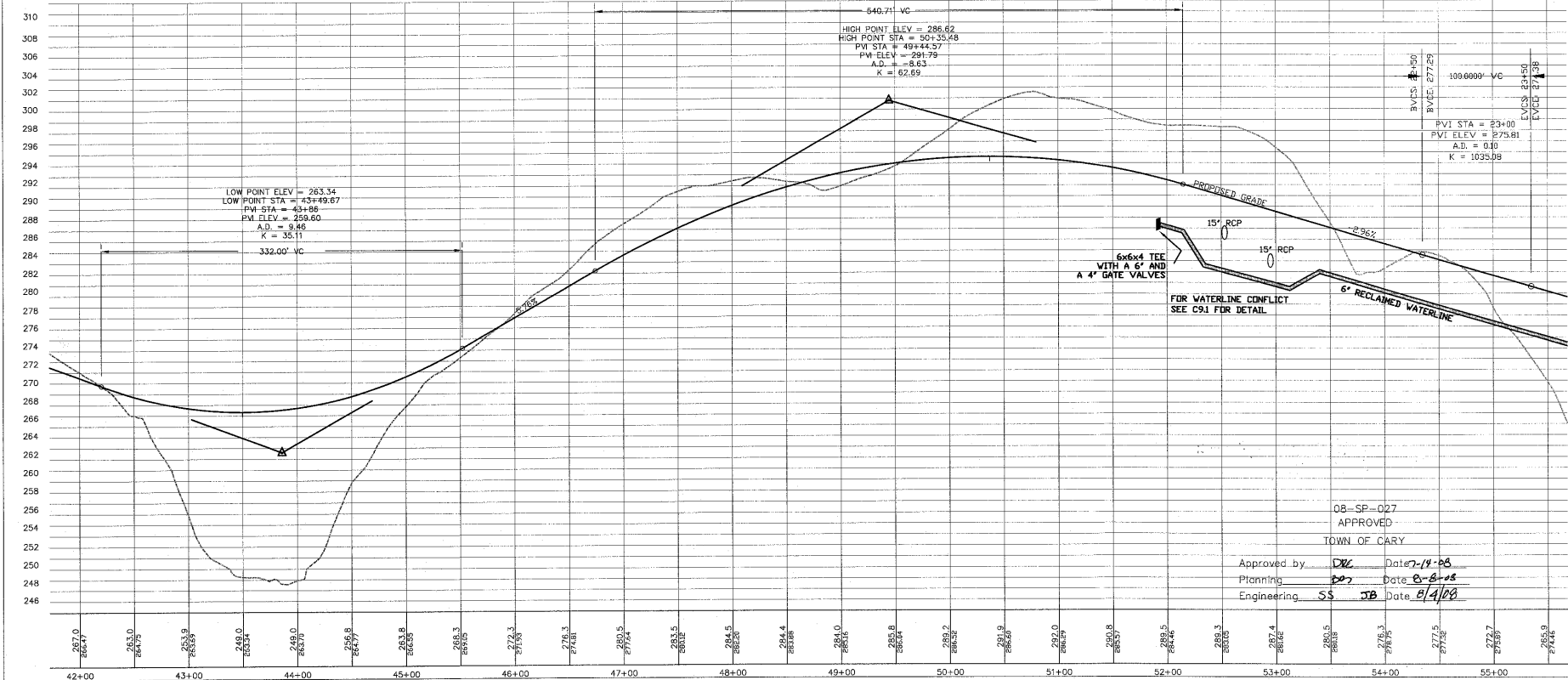


RELEASED FOR CONSTRUCTION

# DEL WEBB RECLAIMED WATERLINE

Cary, NC

Pulte Homes Corporation  
 801 Corporate Center Drive, Suite 118  
 Raleigh, NC 27607



08-SP-027  
 APPROVED  
 TOWN OF CARY

Approved by DLC Date 7-14-08  
 Planning SS Date 8-8-08  
 Engineering SS JB Date 8/4/08

REVISIONS

PROJECT #: 06-050    DATE: 07/25/08  
 DRAWN BY: MB    CHECKED BY: DS  
 TITLE:  
**DEL WEBB AVE  
 PLAN AND PROFILE**

SHEET  
**C3.0**

C:\CHASSELLS\ALL RIGHTS ARE RESERVED. ANY POSSESSION, REPRODUCTION OR OTHER USE OF THIS DOCUMENT WITHOUT THE WRITTEN PERMISSION FROM CHAS. H. SELLS, INC. IS EXPRESSLY PROHIBITED.