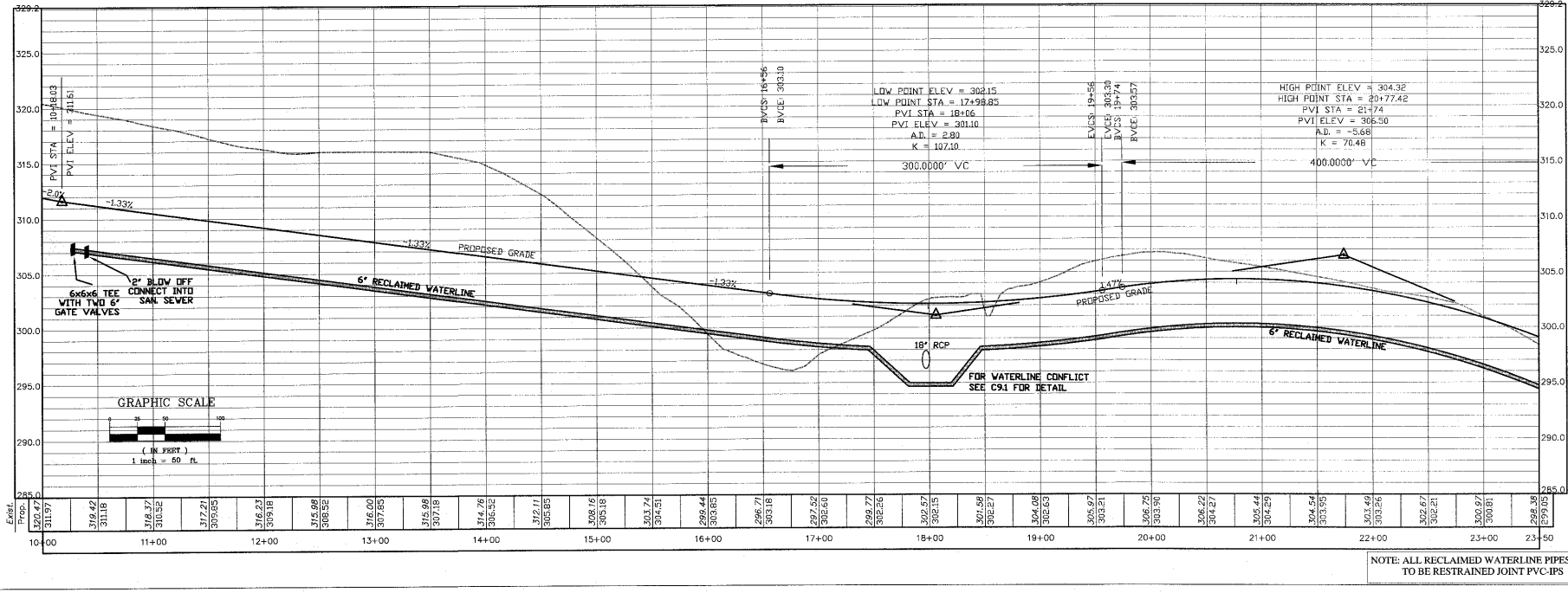


**CHAS. H. SELLS, INC.**  
 Consulting Engineers, Surveyors & Photogrammetrists  
 15401 Weston Parkway  
 Suite 100  
 Cary, NC 27513  
 Tel: 919-678-0206  
 Fax: 919-678-0206  
 www.chasells.com



Excel

311.97	316.42	318.37	318.52	317.21	309.85	316.23	309.18	315.99	308.52	316.00	307.85	315.99	307.18	314.76	306.52	315.11	305.85	308.16	305.18	303.74	304.51	298.44	303.85	296.71	303.18	297.52	302.60	299.77	302.26	302.57	302.15	301.59	302.27	304.08	302.63	306.97	303.21	306.75	303.90	306.22	304.27	305.44	304.29	304.54	303.59	302.49	303.26	302.67	302.21	300.97	300.81	299.39	299.05				
10+00	11+00	12+00	13+00	14+00	15+00	16+00	17+00	18+00	19+00	20+00	21+00	22+00	23+00	23+50																																											

**DEL WEBB RECLAIMED WATERLINE**  
 PLAN AND PROFILE

REVISIONS


PROJECT #: 06-4000 DATE: 07/25/08  
 DRAWN BY: MB CHECKED BY: DS  
 TITLE  
**FINNBAR DR**  
**PLAN AND PROFILE**

SHEET

**C3.4**

**CHAS. H. SELLS, INC.**  
 Consulting Engineers, Surveyors & Photogrammetrists  
 15401 Weston Parkway  
 Suite 100  
 Cary, NC 27513  
 Tel: 919-678-0206  
 Fax: 919-678-0206  
 www.chasells.com

**DEL WEBB RECLAIMED WATERLINE**  
 PLAN AND PROFILE

CARY, NC

Pulte Homes Corporation  
 801 Corporate Center Dr., Suite 118  
 Raleigh, NC 27607