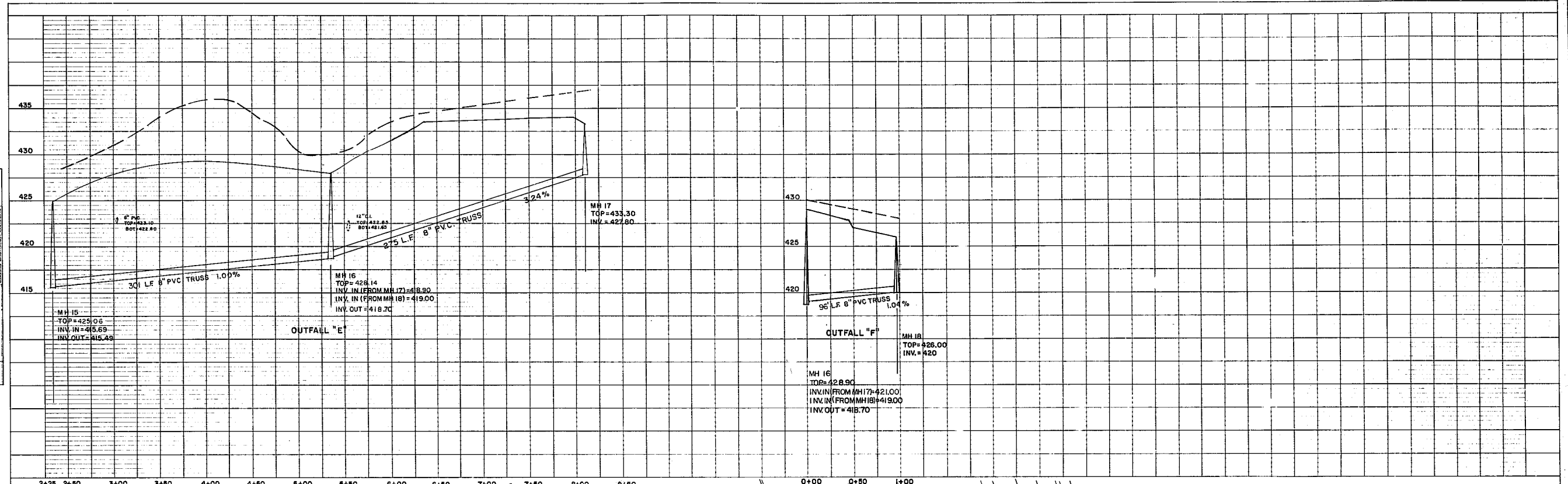
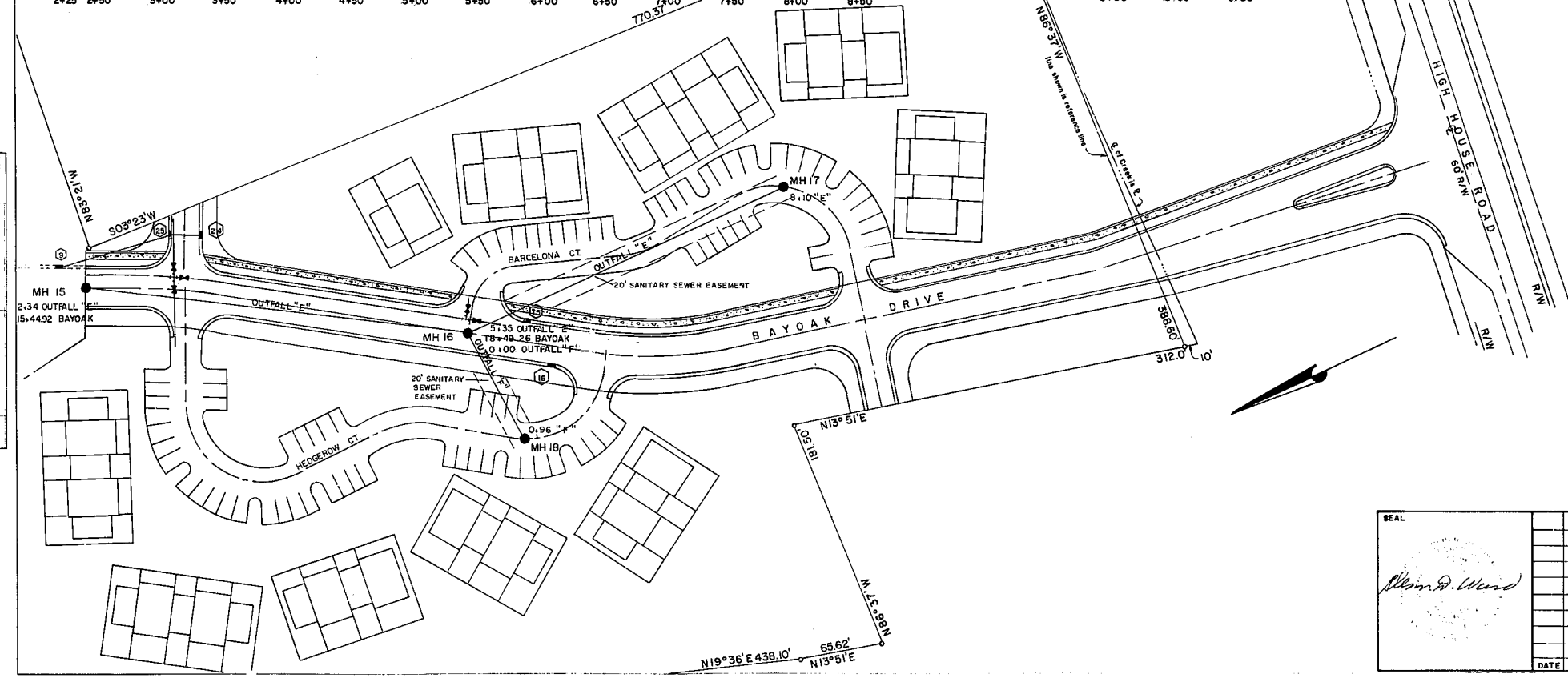


APPROVED FOR THE  
 COUNTY ENGINEER  
 HIGHWAY DEPARTMENT  
 HIGHWAY DESIGN DIVISION

DATE	BY	REVISIONS



DATE	BY	REVISIONS



NOTES: Contractor is Responsible For Verifying  
 The Exact Location Of All Existing Utilities.  
 Contractor To Take All Precautions Necessary To Prevent  
 Sedimentation And Erosion During All Phases Of Construction.  
 To Be Constructed In Accordance With City  
 Of Cary Standards And Specifications.

	SEWER PLAN & PROFILE		Sheet
	PHASE II		4
Date	6/14/84	DUTCHESS VILLAGE — SECTION 3	Of
Scale	1" = 5' VERT. 1" = 50' HORIZ.	CARY WAKE CO. N.C.	
Drn. by	M.T.B.	GLENN WARD & ASSOCIATES CIVIL ENGINEERS	7
Chkd. by	G.D.W.	301 EAST DURHAM ROAD, CARY, N.C. PHONE 467-0207	
Field Bk.			
DATE	REVISIONS	BY	