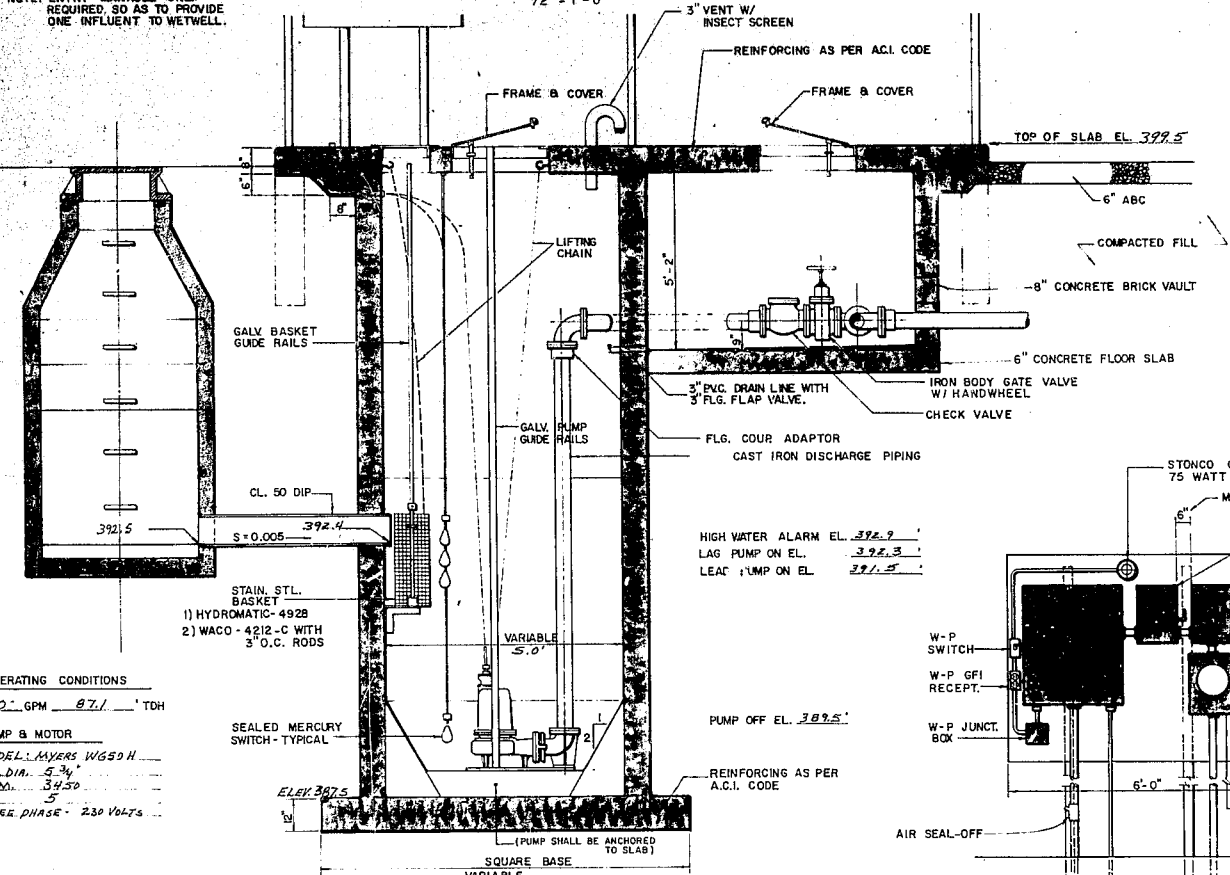


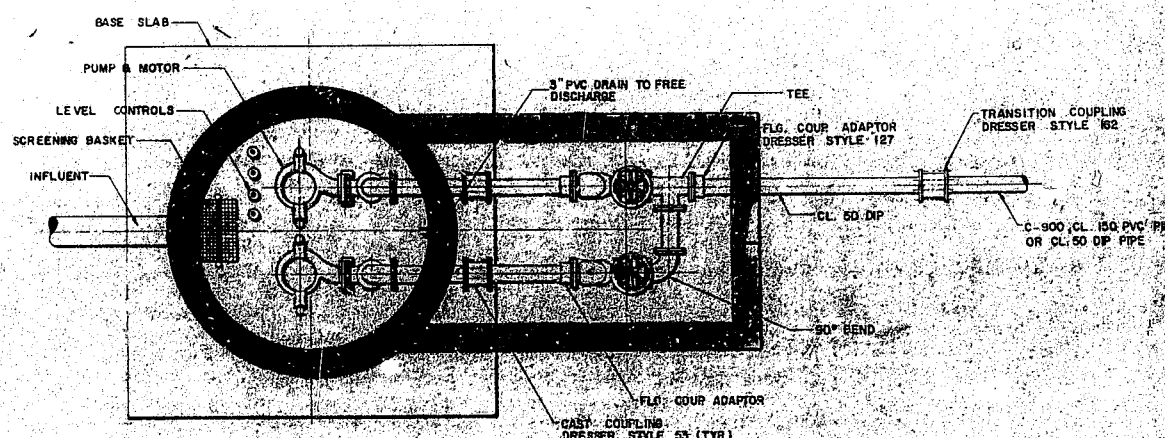
TOP PLAN
1/2" = 1'-0"

NOTE: ENTRY MANHOLE ONLY REQUIRED SO AS TO PROVIDE ONE INFLUENT TO WETWELL.

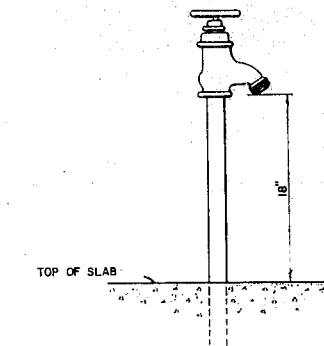


SECTION THRU WET WELL & VALVE PIT
1/2" = 1'-0"

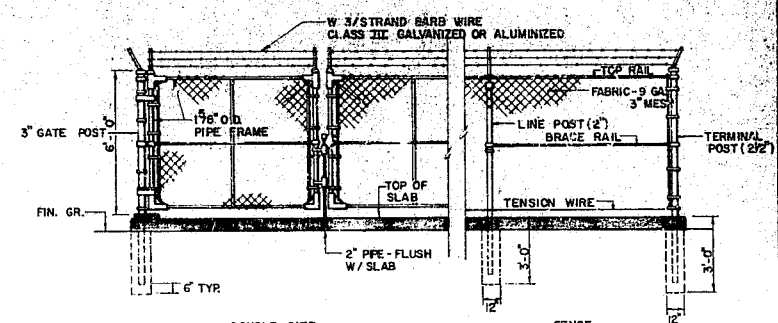
OPERATING CONDITIONS
80 GPM @ 87.1' TDH
PUMP & MOTOR
MODEL: MAYERS W650 H
IMP. DIA. 5 3/4"
R.P.M. 3450
HP 5
TANKER PHASE - 230 VOLTS



PIPING PLAN
1/2" = 1'-0"

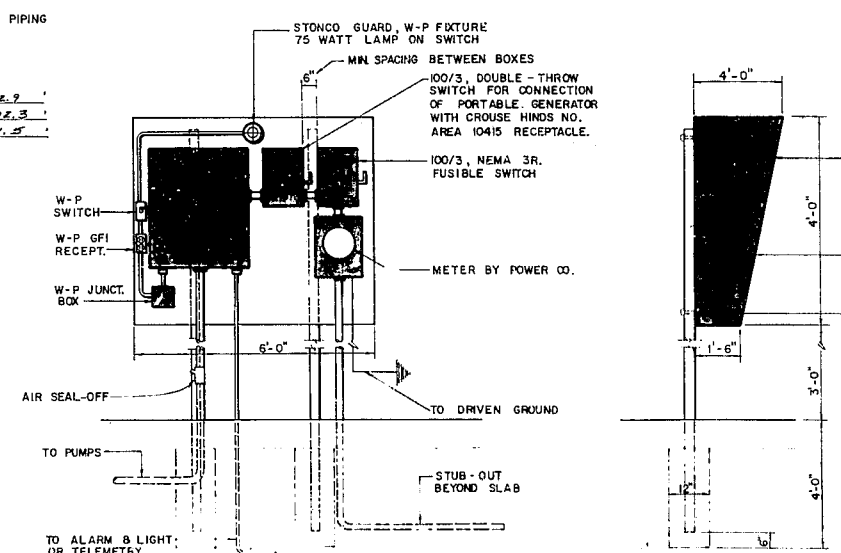


WATER SERVICE
NO SCALE
NON-FREEZE HYDRANT WITH BACK-FLOW PREVENTOR.

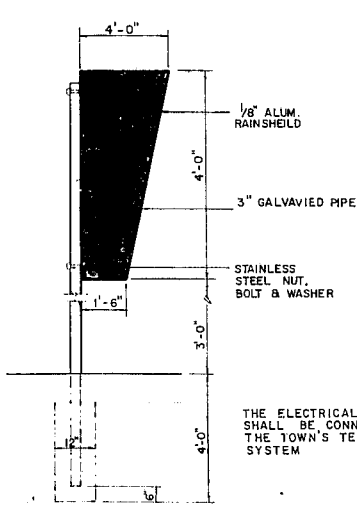


CHAIN LINK FENCE
NO SCALE

NOTE: WHERE FORCE MAIN DISCHARGES INTO MANHOLE, MANHOLE SHALL BE COATED WITH BITUMASTIC MATERIAL INSIDE.



ELECTRICAL SERVICE
NO SCALE (FOR 3 PHASE MOTORS)



SITE PLAN
1" = 20'

TOWN OF CARY
ENGINEERING DEPARTMENT



STANDARD SUBMERSIBLE PUMP STATION
DUCHESS VILLAGE SECT. 3

DATE: MAY 15, 1984
SCALE: AS SHOWN
SHEET 7 OF 9
DRAWN BY: R. BENFIELD
REVISIONS:
1. 1000 W.T. 10/83
2. 1000 W.T. 10/83
3. 1000 W.T. 10/83
4. 1000 W.T. 10/83
5. 1000 W.T. 10/83
6. 1000 W.T. 10/83
7. 1000 W.T. 10/83
8. 1000 W.T. 10/83
9. 1000 W.T. 10/83
10. 1000 W.T. 10/83
11. 1000 W.T. 10/83
12. 1000 W.T. 10/83
13. 1000 W.T. 10/83
14. 1000 W.T. 10/83
15. 1000 W.T. 10/83
16. 1000 W.T. 10/83
17. 1000 W.T. 10/83
18. 1000 W.T. 10/83
19. 1000 W.T. 10/83
20. 1000 W.T. 10/83
21. 1000 W.T. 10/83
22. 1000 W.T. 10/83
23. 1000 W.T. 10/83
24. 1000 W.T. 10/83
25. 1000 W.T. 10/83
26. 1000 W.T. 10/83
27. 1000 W.T. 10/83
28. 1000 W.T. 10/83
29. 1000 W.T. 10/83
30. 1000 W.T. 10/83
31. 1000 W.T. 10/83
32. 1000 W.T. 10/83
33. 1000 W.T. 10/83
34. 1000 W.T. 10/83
35. 1000 W.T. 10/83
36. 1000 W.T. 10/83
37. 1000 W.T. 10/83
38. 1000 W.T. 10/83
39. 1000 W.T. 10/83
40. 1000 W.T. 10/83
41. 1000 W.T. 10/83
42. 1000 W.T. 10/83
43. 1000 W.T. 10/83
44. 1000 W.T. 10/83
45. 1000 W.T. 10/83
46. 1000 W.T. 10/83
47. 1000 W.T. 10/83
48. 1000 W.T. 10/83
49. 1000 W.T. 10/83
50. 1000 W.T. 10/83
51. 1000 W.T. 10/83
52. 1000 W.T. 10/83
53. 1000 W.T. 10/83
54. 1000 W.T. 10/83
55. 1000 W.T. 10/83
56. 1000 W.T. 10/83
57. 1000 W.T. 10/83
58. 1000 W.T. 10/83
59. 1000 W.T. 10/83
60. 1000 W.T. 10/83
61. 1000 W.T. 10/83
62. 1000 W.T. 10/83
63. 1000 W.T. 10/83
64. 1000 W.T. 10/83
65. 1000 W.T. 10/83
66. 1000 W.T. 10/83
67. 1000 W.T. 10/83
68. 1000 W.T. 10/83
69. 1000 W.T. 10/83
70. 1000 W.T. 10/83
71. 1000 W.T. 10/83
72. 1000 W.T. 10/83
73. 1000 W.T. 10/83
74. 1000 W.T. 10/83
75. 1000 W.T. 10/83
76. 1000 W.T. 10/83
77. 1000 W.T. 10/83
78. 1000 W.T. 10/83
79. 1000 W.T. 10/83
80. 1000 W.T. 10/83
81. 1000 W.T. 10/83
82. 1000 W.T. 10/83
83. 1000 W.T. 10/83
84. 1000 W.T. 10/83
85. 1000 W.T. 10/83
86. 1000 W.T. 10/83
87. 1000 W.T. 10/83
88. 1000 W.T. 10/83
89. 1000 W.T. 10/83
90. 1000 W.T. 10/83
91. 1000 W.T. 10/83
92. 1000 W.T. 10/83
93. 1000 W.T. 10/83
94. 1000 W.T. 10/83
95. 1000 W.T. 10/83
96. 1000 W.T. 10/83
97. 1000 W.T. 10/83
98. 1000 W.T. 10/83
99. 1000 W.T. 10/83
100. 1000 W.T. 10/83

STANDARD No. 7.11