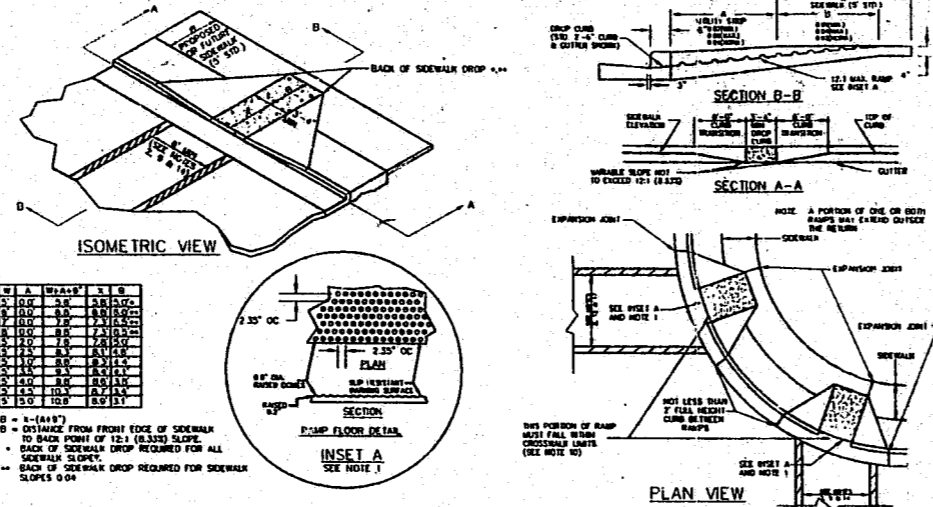


A.B.C. UNDER 2'-6" CURB & GUTTER

DATE	DESCRIPTION

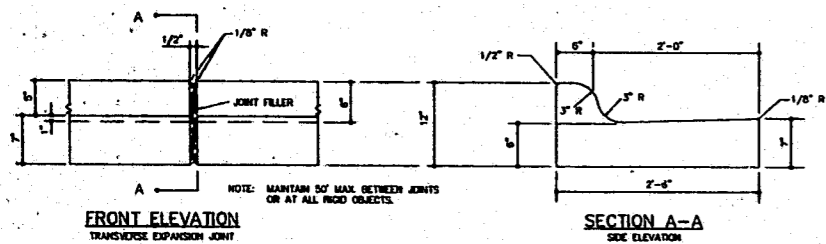
STD. No. 3.10



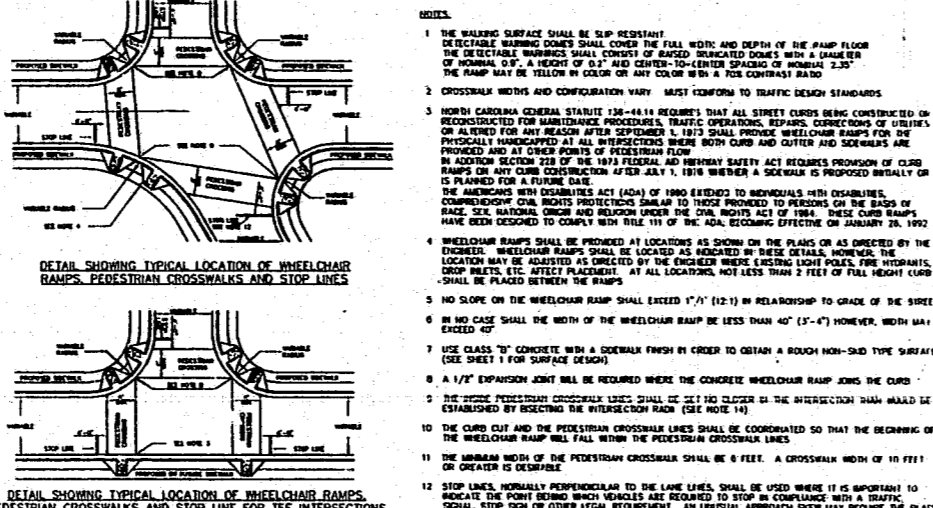
STANDARD WHEELCHAIR RAMP

DATE	DESCRIPTION

STD. No. 3.17



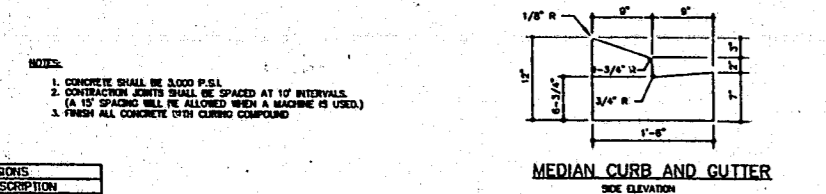
COMBINATION CURB AND GUTTER



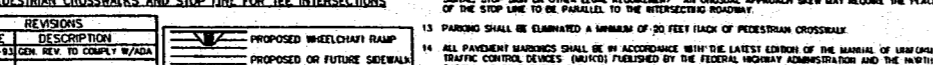
STANDARD WHEELCHAIR RAMP

DATE	DESCRIPTION

STD. No. 3.17



MEDIAN CURB AND GUTTER



STANDARD WHEELCHAIR RAMP

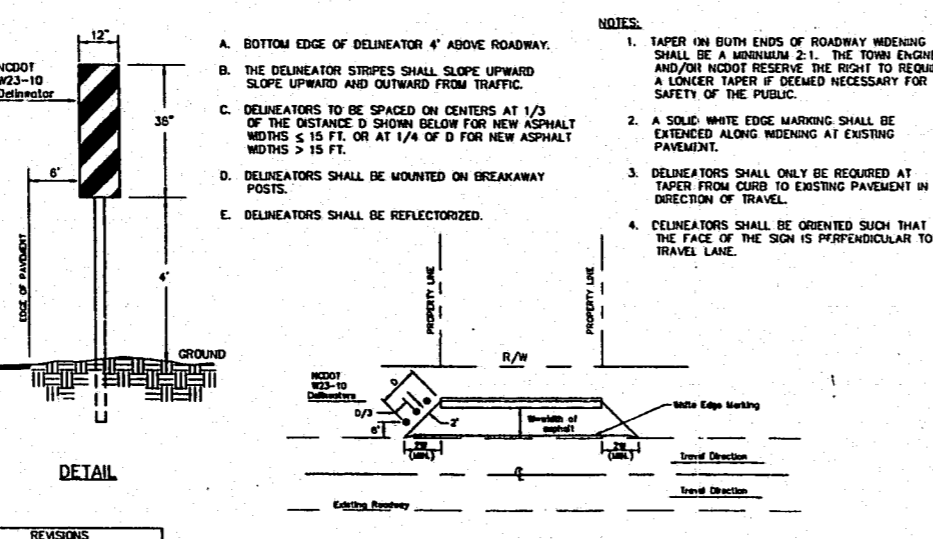
DATE	DESCRIPTION

STD. No. 3.17

STANDARD CONCRETE CURB AND GUTTER

DATE	DESCRIPTION

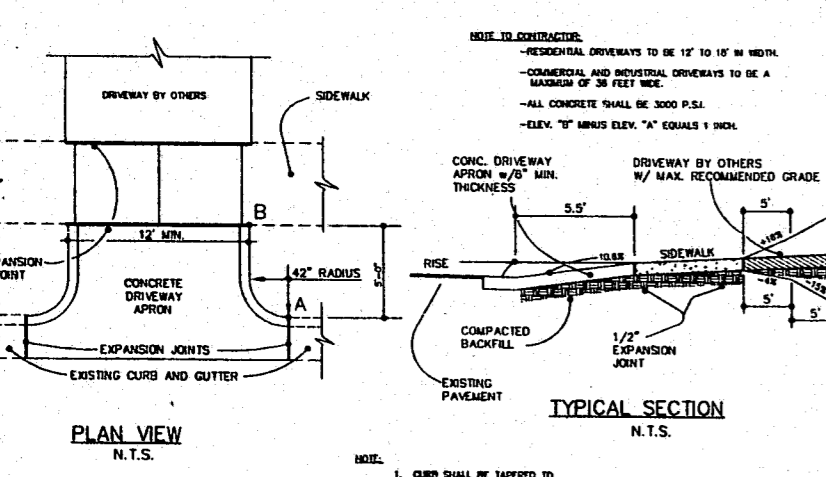
STD. No. 3.11



STANDARD PAVEMENT WIDENING TAPER AND MARKINGS

DATE	DESCRIPTION

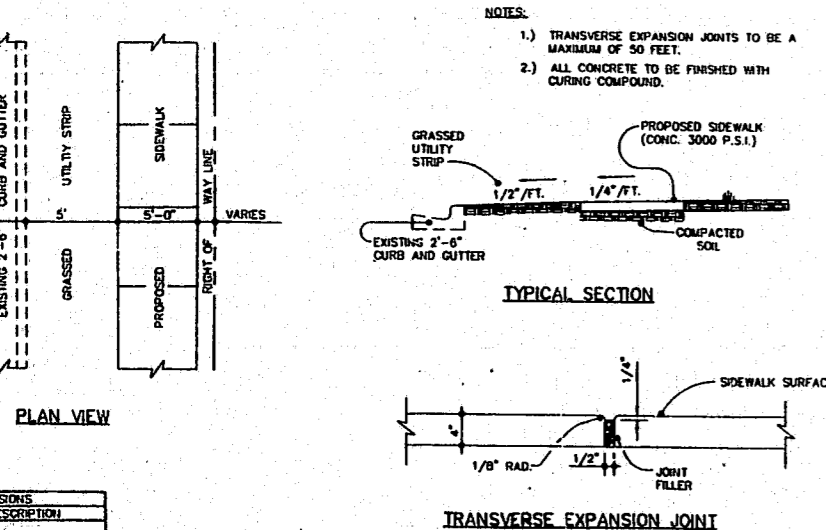
STD. No. 3.18



STANDARD DRIVEWAY APRON

DATE	DESCRIPTION

STD. No. 3.15



STANDARD CONCRETE SIDEWALK

DATE	DESCRIPTION

STD. No. 3.16

**11.8. Recycling Drop-Off Stations.**

Recycling drop-off stations shall be permitted as accessory uses in conjunction with any use which does not receive refuse collection from the Town of Cary. Section 10-37 of the Code of Ordinances states that the Town will not provide refuse collection services for any building with more than six (6) units in a residential, office, business or industrial zone or permitted use in an overlay zone, nor will the Town provide refuse collection services for any use or building which exceeds the maximum stated volume of refuse (four (4) 32 gallon containers picked up twice a week). Recycling drop-off stations shall comply with the following standards:

- All drop-off containers and storage bins shall be screened from view to at least fifty (50) percent of the height of the containers and bins in the station. The screen may be fencing or plantings. If plantings are used, the plants must reach the height indicated in the previous sentence within three (3) years of planting.
- The station shall be kept free of litter, debris, and refuse.
- Each station shall be allowed one ground identification sign no more than 60 inches high and seventeen square feet in area, apportioned between all the sides of the sign. The sign shall include the name and telephone number of a party responsible for management and maintenance of the station shall be clearly posted at the station;
- Drop-off containers and storage bins shall be located no closer than 50 feet to a lot occupied by a dwelling.
- Excluding screening, drop-off containers and storage bins shall occupy no more than 500 square feet in total;
- The station shall not occupy or block access to parking spaces or aisles which Chapter 12 of this Ordinance requires for the principal use;
- The station shall not involve the unattended parking of a trailer;
- All drop-off containers and storage bins shall be durable, waterproof, rustproof, covered, and secure from unauthorized entry, and shall be clearly marked to indicate the type of material to be deposited therein;
- The deadline for bringing stations which exist at the time of adoption of this ordinance into compliance is one hundred eighty days. This ordinance was adopted on January 9, 1992.

Supp. No. 15 13-6