



THIS DRAWING PREPARED AT THE  
**RALEIGH OFFICE**  
 5410 Trinity Road, Suite 02 | Raleigh, NC 27607  
 TEL 919.866.9551 FAX 919.833.8124 www.timmons.com

YOUR VISION ACHIEVED THROUGH OURS.

DATE	REVISION DESCRIPTION
08-23-2016	REVISED PER TOC REVIEW COMMENTS
10-27-2016	REVISED PER TOC REVIEW COMMENTS
02-21-2017	REVISED PER TOC REVIEW COMMENTS
03-23-2017	REVISED PER TOC REVIEW COMMENTS

DATE	01/14/2016
DRAWN BY	BLM
DESIGNED BY	BLM
CHECKED BY	KMR
SCALE	1"=100'

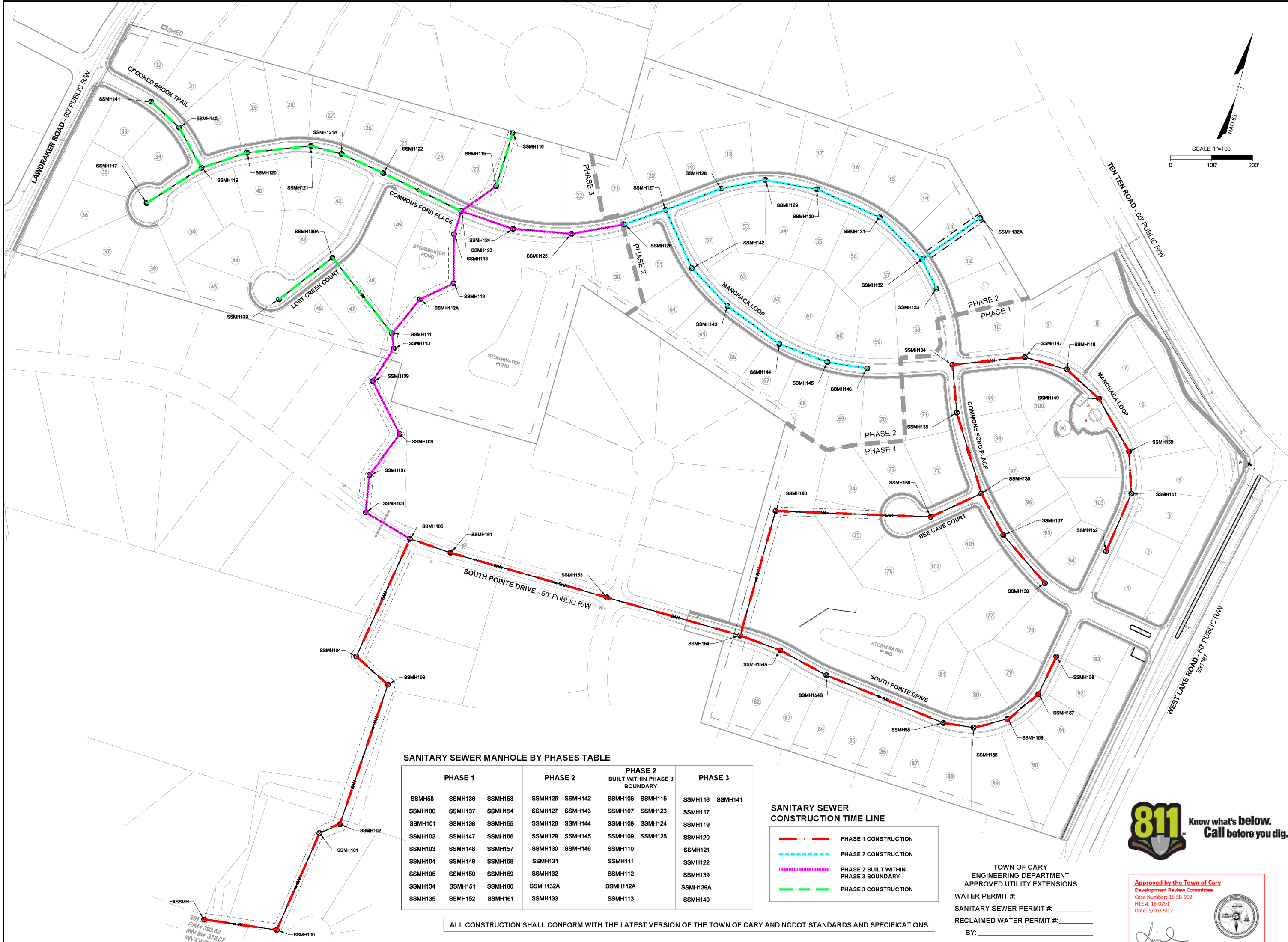
# TIMMONS GROUP

FAIRVIEW PARK  
 TOWN OF CARY - WAKE COUNTY - NORTH CAROLINA  
 SANITARY SEWER PHASING PLAN  
 NORTH CAROLINA LICENSE NO. C-1652

Approved by the Town of Cary  
 Development Review Committee  
 Case Number: 16-SB-002  
 ITE #: 16-0791  
 Date: 5/05/2017

JOB NO. 35556  
 SHEET NO. C5.1

These plans and associated documents are the exclusive property of TIMMONS GROUP and may not be reproduced in whole or in part and shall not be used for any purpose whatsoever, inclusive, but not limited to construction, bidding, and/or construction staking without the express written consent of TIMMONS GROUP.



SANITARY SEWER MANHOLE BY PHASES TABLE

PHASE 1			PHASE 2		PHASE 2 BUILT WITHIN PHASE 3 BOUNDARY		PHASE 3	
SSMH58	SSMH136	SSMH153	SSMH126	SSMH142	SSMH106	SSMH115	SSMH116	SSMH141
SSMH100	SSMH137	SSMH154	SSMH127	SSMH143	SSMH107	SSMH123	SSMH117	
SSMH101	SSMH138	SSMH155	SSMH128	SSMH144	SSMH108	SSMH124	SSMH119	
SSMH102	SSMH147	SSMH156	SSMH129	SSMH145	SSMH109	SSMH125	SSMH120	
SSMH103	SSMH148	SSMH157	SSMH130	SSMH146	SSMH110		SSMH121	
SSMH104	SSMH149	SSMH158	SSMH131		SSMH111		SSMH122	
SSMH105	SSMH150	SSMH159	SSMH132		SSMH112		SSMH139	
SSMH134	SSMH151	SSMH160	SSMH132A		SSMH112A		SSMH139A	
SSMH135	SSMH152	SSMH161	SSMH133		SSMH113		SSMH140	

**SANITARY SEWER CONSTRUCTION TIME LINE**

- PHASE 1 CONSTRUCTION
- PHASE 2 CONSTRUCTION
- PHASE 2 BUILT WITHIN PHASE 3 BOUNDARY
- PHASE 3 CONSTRUCTION

TOWN OF CARY  
 ENGINEERING DEPARTMENT  
 APPROVED UTILITY EXTENSIONS

WATER PERMIT #:  
 SANITARY SEWER PERMIT #:  
 RECLAIMED WATER PERMIT #:  
 BY:

ALL CONSTRUCTION SHALL CONFORM WITH THE LATEST VERSION OF THE TOWN OF CARY AND NCDOT STANDARDS AND SPECIFICATIONS.

**811** Know what's below. Call before you dig.

Lindsay Darden, Planner II