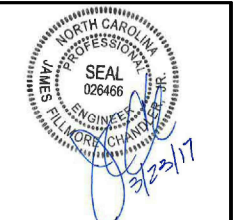
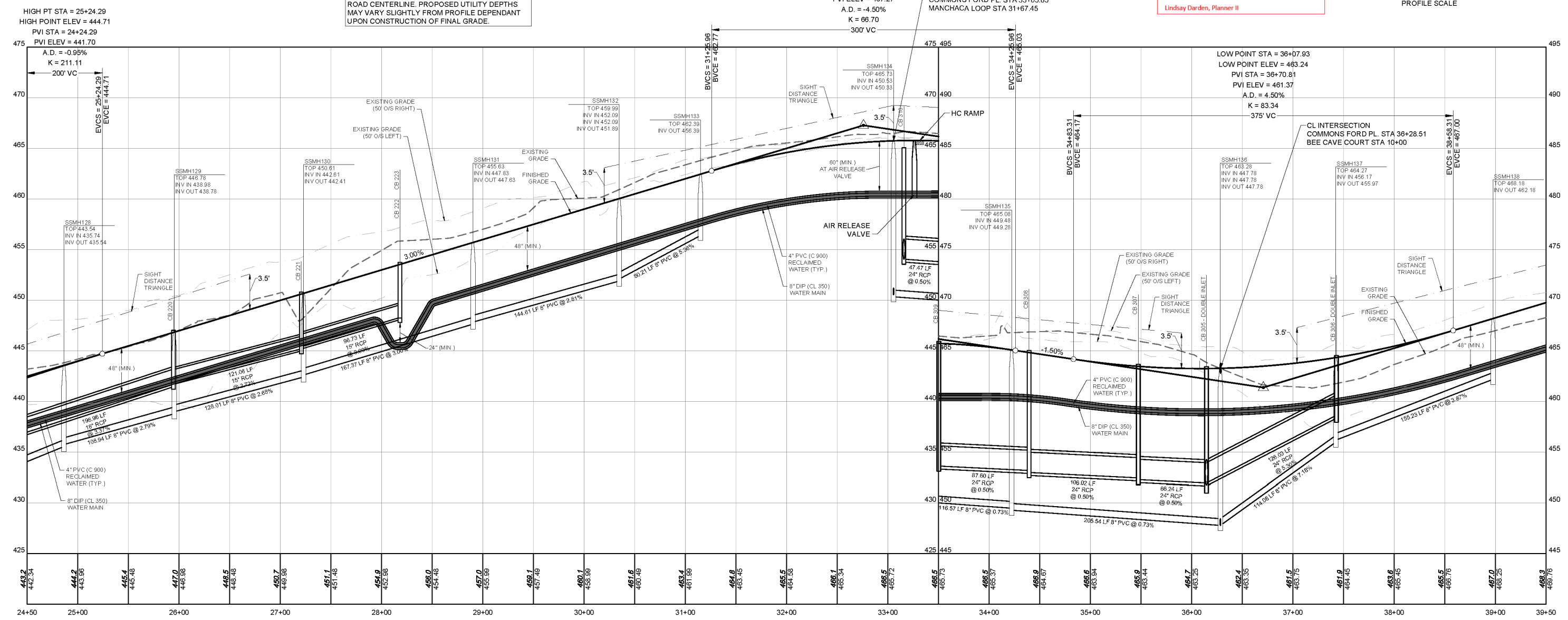


COMMONS FORD PLACE STA. 24+50 - STA. 39+50
(25 MPH DESIGN SPEED)

Approved by the Town of Cary
Development Review Committee
Case Number: 16-58-002
HTE #: 16-0791
Date: 5/05/2017

Lindsay Darden, Planner II

NOTE:
PROFILE SURFACES GENERATED FROM PROPOSED ROAD CENTERLINE. PROPOSED UTILITY DEPTHS MAY VARY SLIGHTLY FROM PROFILE DEPENDANT UPON CONSTRUCTION OF FINAL GRADE.



THIS DRAWING PREPARED AT THE
RALEIGH OFFICE
5410 Trinity Road, Suite 02 | Raleigh, NC 27607
TEL 919.866.9551 FAX 919.833.8124 www.timmons.com

YOUR VISION ACHIEVED THROUGH OURS.

DATE	REVISION DESCRIPTION
08-23-2016	REVISED PER TOC REVIEW COMMENTS
10-27-2016	REVISED PER TOC REVIEW COMMENTS
02-21-2017	REVISED PER TOC REVIEW COMMENTS
03-23-2017	REVISED PER TOC REVIEW COMMENTS

DATE	01/14/2016
DRAWN BY	ATB
DESIGNED BY	ATB
CHECKED BY	SBT
SCALE	---

TIMMONS GROUP
FAIRVIEW PARK
TOWN OF CARY - WAKE COUNTY - NORTH CAROLINA
COMMONS FORD PLACE PLAN AND PROFILE
NORTH CAROLINA LICENSE NO. C-1652

JOB NO. 35556
SHEET NO. C6.1

These plans and associated documents are the exclusive property of TIMMONS GROUP and may not be reproduced in whole or in part and shall not be used for any purpose whatsoever, inclusive, but not limited to construction, bidding, and/or construction staking without the express written consent of TIMMONS GROUP.